



ednet Smart Home

Quick Installation Guide

84293 • 84294

Safety Precautions

EN

- Only use the ednet smart home devices within the specified temperature range for:
Sensors & Actors: 0 ~ 40°C
- When not in use, store the product in a clean and dry place in temperatures between 0°C and 40°C
- Do not cover ednet.smart home products
- Do not let the indoor devices including camera and sensors come into contact with liquids (except outdoor cameras with IP66 protective cover)
- ednet Smart Home does not replace adult supervision. Safeguard the health of your children, family members or pets by regularly looking after them
- Ensure that the indoor devices are only used inside. These devices are not intended for outdoor use and can be damaged. In this case use the specified outdoor models.
- Protect the sensors and actors from electrical and other HF devices generating interferences (microwaves, mobile phones, etc.)
- Keep camera, network cable and power cord outside the reach of children, since these components can be dangerous
- Only use the supplied power adapter.
- Never try to repair ednet smart home system by yourself. Repair and maintenance work must be carried out by specialists.
- In case of problems contact our customer service.

Personal Information

- Read and accept the privacy policy for using the ednet smart home systems under <http://ednet-europe.eu/en/ednet-smart-home/datenschutzerklaerung-fuer-das-kameraportal-und-apps/>
- Select a password with a high degree of safety for your ednet smart home account to protect it from unauthorized access.
- The password should contain at least 8 characters; we recommend case-sensitive letters and alphanumeric characters.
- Furthermore, the standard password of the camera should be changed to avoid unauthorized access here as well.

Live stream, push notification and further services are available via a cloud server. Despite backup solutions, system stability and bandwidth management the uninterrupted availability of the system cannot be guaranteed.

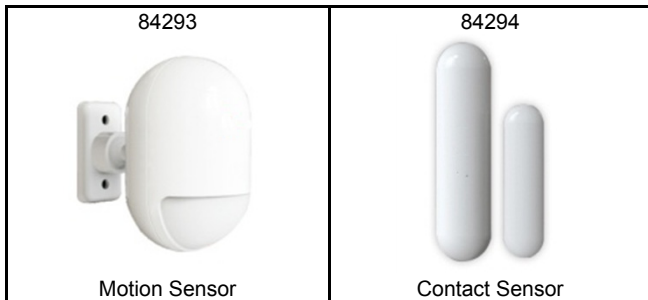
What's in the box

84293

- 1 x Motion Sensor
- 2 x AAA Batteries
- 1 x Quick Installation Guide

84294

- 1 x Contact Sensor
- 1 x Battery
- 1 x Quick Installation Guide



Thank you for choosing ednet Smart Home, which can be up-and-running quick and easy without complicated network settings.

Preparation

84293 and 84294 are the additional sensors that you can add onto your ednet.home Starter Kit (84299) or the IP camera gateway (84302) as accessories.

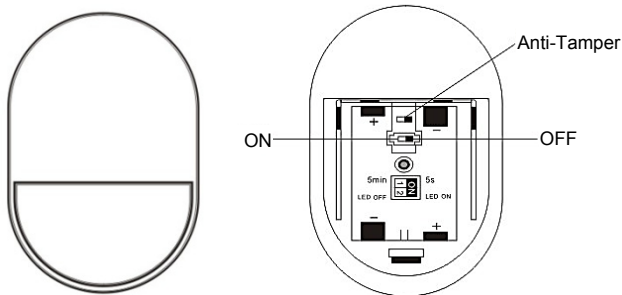
Before starting, please make sure the following items are prepared beforehand:

1. A Starter Kit (84299) or an IP Camera gateway (84302).
2. ednet.home App downloaded to your Android or iOS device.

Sensor Connections

Motion Sensor

Please insert the 2x AAA batteries from the package and follow the +/- sign to install the battery.



LED indicator:

- LED flashes once: detects motion
- LED flashes once every 3s: Low-voltage indication.
Please change to the new battery as soon as possible.

Anti-tamper Function:

When the sensor's back cover is opened, the anti-tamper button will be triggered. The motion sensor's light would flash once and send the alarm notification via APP.

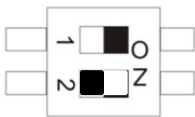
Mode Setting:

There is a switch on the back of the Motion sensor.

You can slide it to left or right for different settings to control:

- Interval: you can set the interval time between each motion detection as 5 seconds or 5 minutes apart.
- LED: you can select the LED indication on the motion sensor to be OFF or ON.

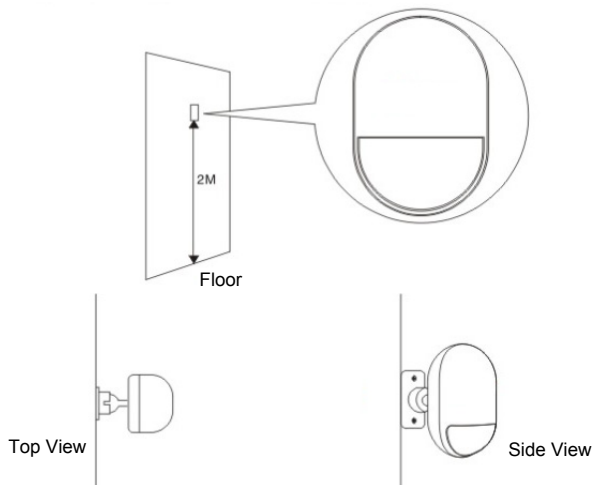
Below example means interval of 5S and LED OFF.



1	Interval	5 Min	5S
2	LED	Off	On

Installation:

Installation location should avoid too close to window, air conditioner, fluorescent lights, heater, refrigerator, stove, sunlight and other places where temperature would change rapidly and air flow speed is high. If there are two detectors in the same detecting range, please adjust the position to avoid the interfering resulting in false alarms.



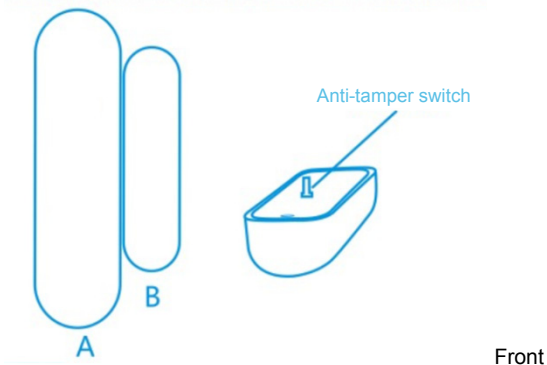
Fix the detector on the bracket, and change the detecting angel and distance through adjusting the installation height and the bracket. The installation height is suggested to be 2 meters high from ground.

Contact Sensor for Door/Window

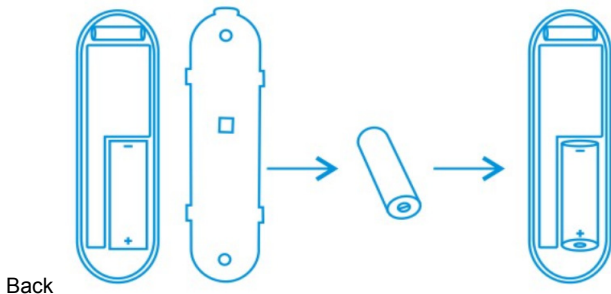
The contact sensor consisted of 2 parts.

Part A is the transmitter that communicates with the Gateway.

Part B is the magnet. So when Part A and Part B are separated when the door/window is opened, the contact sensor is triggered.



Please insert the battery following below instruction.



LED indicator:

- LED flashes once: detects motion
- LED flashes once every 3s: Low-voltage indication.
Please change to a new A23 battery (12V/23A) as soon as possible.

Anti-tamper Function:

When the sensor's back cover is opened, the anti-tamper button will be triggered. The motion sensor's light would flash once and send the alarm notification via APP.

Installation:

First, please clean the corresponding position and then adhere both Part A and Part B of the Contact sensor with the double-sided tape included in the package.

You can also use screws to mount the contact sensors onto the doors/windows.

Please note that Part A (Transmitter) and Part B (Magnet) should be installed separately, where the transmitter is mounted on the fixed doors or windows frame and the magnet part should be fixed on the movable parts of the doors or windows.

Add Sensors to the Gateway

After pressing the “Sensor/Actor” icon on the camera live-view page, you will enter the Sensor/Actor list. **(1)**

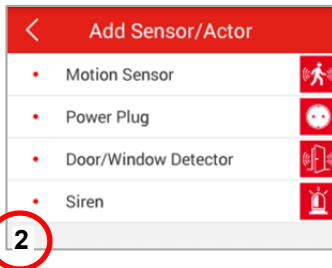
Please press the “+” sign on the top right corner to add a sensor or actor.



Please select the “type” of your sensor or actor to add. **(2)**

For Contact sensor, please select the “Door/Window detector” to add.

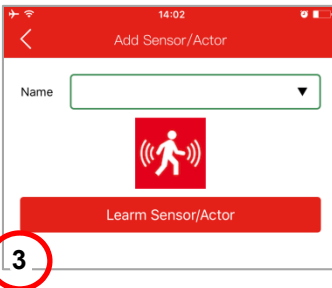
For Motion sensor, please select “Motion Sensor” to add.



Let's start with Motion sensor by selecting Motion sensor type on the App side as the example.

Please give a name to this motion sensor. **(3)**

Then press the “Learn Sensor/Actor” button.



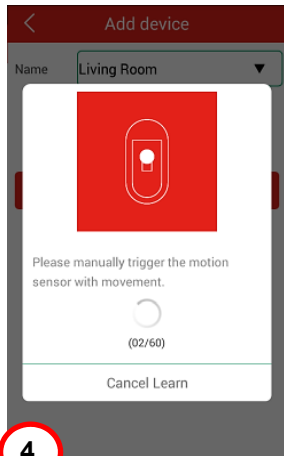
Then the IP camera gateway would enter “learning mode” for 60 seconds.

During this 60-second period, please power on your Motion sensor and trigger the motion sensor with any movement. **(4)**

Then the IP camera gateway would detect the motion sensor to complete the “learning/paring” process.

Please press “Apply” to complete the adding sensor process.

Please repeat the same process to add the next sensor/actor such as Contact Sensor.



Trademarks

ednet is a registered trademark of ASSMANN Electronic GmbH. Apple, Apple App Store are registered trademarks of Apple Inc. Android, Google, Google play are registered trademarks of Google Inc. AVM Fritz!Box is a registered trademark of AVM Computersysteme Vertriebs GMBH. Telekom Speedport is a registered trademark of Deutsche Telekom AG.

Note:

All other trademarks not listed here, are the property of their respective owners. Trademarks or trade names mentioned in this manual are used to describe the operating steps and do not imply that they are freely available. In any case they are the property of the respective holder of the rights.

84293 Technical descriptions:

Frequency Range	433.92 MHz (TX, Duty cycle<10%)
Transmit Power	7.76dBm ERP
Hardware Version	KR-P829-119-A
Software Version	V12

84294 Technical descriptions:

Frequency Range	433.92 MHz (TX, Duty cycle<10%)
Transmit Power	8.39 dBm ERP
Hardware Version	KR-D026-119-A
Software Version	V10

Hereby Assmann Electronic GmbH, declares that the Declaration of Conformity is part of the shipping content. If the Declaration of Conformity is missing, you can request it by post under the below mentioned manufacturer address.

www.assmann.com

Assmann Electronic GmbH
Auf dem Schüffel 3
58513 Lüdenscheid
Germany

