

# 16-Port 10/100/1000Mbps Gigabit Ethernet Switch



The PLANET GSW-1601 provides 16 RJ-45 10/100/1000Mbps ports for high-speed network connectivity. The GSW-1601 can also automatically identify and determine the correct transmission speed and half / full duplex mode of the attached devices with its 16 Gigabit ports that are jumbo frame feature supported. Therefore, GSW-1601 can handle extremely large amounts of data transmission in a secure topology linking to a backbone or high-power servers.

All RJ-45 copper interfaces in the GSW-1601 support 10/100/1000Mbps Auto-Negotiation for optimal speed detection through RJ-45 Category 6, 5 or 5e cables. It also supports standard for Auto-MDI/MDI-X that can detect the type of connection to any Ethernet device without requiring special straight or crossover cables.

The Flow Control function allows GSW-1601 supported routers and Servers to directly connect to this Switch for fast and reliable data transfer. Moreover, the GSW-1601 supports Store-and-Forward forwarding scheme to ensure low latency and high data integrity, which eliminates unnecessary traffic and relieves congestion on critical network paths. With an intelligent address recognition algorithm, the GSW-1601 could recognize up to 8K different MAC address and enables filtering and forwarding at full wire speed. The high data throughput and 32Gbps internal switching fabric makes it ideal for most Gigabit environments, especially when network upgrades to a Gigabit environment.

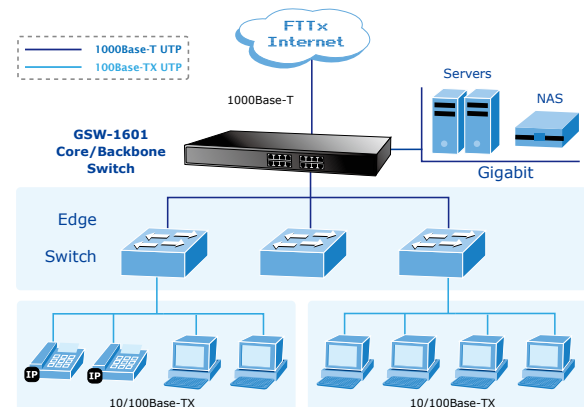
## KEY FEATURES

- Comply with IEEE 802.3, 10Base-T, IEEE 802.3u 100Base-TX, IEEE 802.3ab 1000Base-T Ethernet standard
- 16-Port 10/100/1000Mbps Gigabit Ethernet ports
- Features Store-and-Forward mode with wire-speed filtering and forwarding rates
- Hardware based 10/100Mbps, half / full duplex and 1000Mbps full duplex mode, flow control and auto-negotiation
- IEEE 802.3x flow control for full duplex operation and Backpressure for half duplex operation
- Integrated address look-up engine, support 8K absolute MAC addresses
- 9K Jumbo packet support
- Automatic address learning and address aging
- Supports Auto MDI/MDI-X function
- Support CSMA/CD protocol
- 100-240V AC, 0.6A, 50/60Hz universal Power input
- FCC, CE class A compliant

## APPLICATIONS

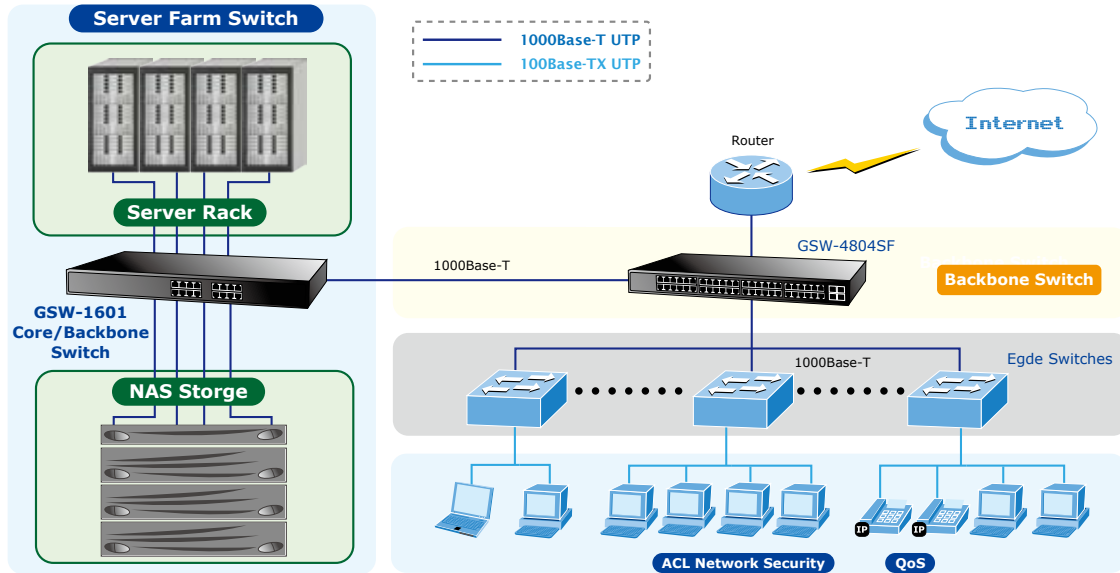
### Backbone Switch

With up to 32 Gigabits per second of non-blocking switch fabric, the GSW-1601 can easily provide the high bandwidth required both now and future.



**Server Farm Switch**

Providing 16 Gigabit Ethernet ports, the GSW-1601 is ideal to use as a server farm Switch connecting to your servers and powerful desktops.



**SPECIFICATION**

Product	16-Port 10/100/1000Mbps Gigabit Ethernet Switch
Model	GSW-1601
<b>Hardware Specification</b>	
10/100/1000Base-T MDI/MDIX Ports	16
Throughput (packet per second)	23.8Mpps
Switch fabric	32Gbps / non-blocking
Weight	2.50kg
Power Consumption / Dissipation	21 watts / 71 BTU
Power Requirement	100-240V AC, 0.6A, 50/60Hz
Dimension (W x D x H)	440 x 180 x 45 mm, 1U height
Switch Processing Scheme	Store-and-Forward
Address Table	8K entries
Jumbo packet size	9K
Flow Control	Back pressure for half duplex, IEEE 802.3x Pause Frame for full duplex
Temperature	Operating: 0~50 Degree C Storage: -40~70 Degree
Humidity	Operating: 5~90%, Storage: 5~90% (Non-condensing)
<b>Standards Conformance</b>	
Regulation Compliance	FCC Part 15 Class A, CE IEEE 802.3 (Ethernet) IEEE 802.3u (Fast Ethernet)
Standards Compliance	IEEE 802.3ab(Gigabit Ethernet) IEEE 802.3x (Full-duplex flow control)

**ORDERING INFORMATION**

GSW-1601	16-Port 10/100/1000Mbps Gigabit Ethernet Switch
----------	---