



4K HDMI Extender Set, 70 m



Quick Installation Guide

DS-55519

Table of Contents

1. Introduction	3
2. Feature	3
3. Package Content	4
4. Specifications	4
5. Product overview	6
5.1 Transmitter Panel	6
5.2 Receiver Panel	7
5.3 IR Pin Definition	8
6. Application Example	9

1. Introduction

The HDMI Extender Set extends Full HD AV signals over a distance of up to 70 m, 4K/30Hz signals can be extended over a distance of up to 40 m using a CAT6 (or higher) network cable. The transmitter unit features an HDMI loop out for connecting a local monitor. Thanks to PoC (Power over Cable), only the transmitter needs to be supplied with power. IR transmission makes it possible to conveniently control the signal source using remote control from the receiver (output screen). Other features include an EDID copy function of the output screen on the receiver or on the HDMI loop out, which can be selected using the changeover switch.

2. Feature

1. Extends HDMI AV signals to a distance of up to 70 m
2. Supports resolutions of up to 4K/30 Hz, 4:4:4
3. Supports CAT 5e, 6, 6A, 7, 8 network cables
4. PoC (Power over Cable) – Only the transmitter requires an external power adapter
5. HDMI loop-out / output – Connection of local monitor to the source device
6. EDID copy function of the output screen on the receiver or on the HDMI loop out
7. HDMI 1.4, HDCP 1.4, DVI 1.0
8. IR interface enables remote control of the input source from the output screen
9. Video bandwidth: 10.2 Gbps

3. Package Content

- 1x Transmitter unit
- 1x Receiver unit
- 1x IR transmission cable (1.5 m)
- 1x IR receiver cable (1.5 m)
- 1x Power adapter (DC 12V/1A, 1.15 m)
- 1x User manual

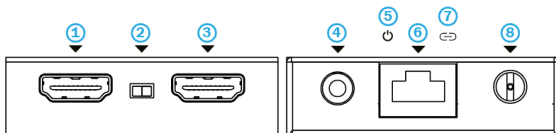
4. Specifications

Technical	
HDMI Compliance	HDMI 1.4
HDCP Compliance	HDCP 1.4
Video Bandwidth	10.2 Gbps
Video Resolution	Up to 4K@30Hz
Audio Support	Up to 7.1CH HD audio
Input TMDS Signal	3.3 volts
Input DDC Signal	5.0 volts/P-P
ESD Protection	Human Body model: <ul style="list-style-type: none">• +/- 8 kV(air-gap discharge)• +/- 4 kV(contact discharge)
Connection	
Transmitter	<ul style="list-style-type: none">• Input: 1x HDMI Type A (19-pin female)• Outputs: 1x HDMI Type A (19-pin female)

	<ul style="list-style-type: none"> • 1x IR OUT (3. 5mm stereo mini-jack) • 1x CAT OUT (RJ45, 8-spin female)
Receiver	<ul style="list-style-type: none"> • Inputs:1x IR IN (3. 5mm stereo mini-jack), 1x CAT IN(RJ45, 8-spin female) • Output: 1x HDMI Type A (19-pin female)
Mechanical	
Housing	Metal Enclosure
Color	Black
Dimensions	79.5 x 69 x 16.5mm
Weight	Transmitter:132g Receiver:130g
Power Supply	12V / 1A DC
Power Consumption	Transmitter: 1.86W Receiver: 0.87W
Operation Temperature	32 - 104°F / 0 - 40°C
Storage temperature	-4 - 140°F / -20 - 60°C
Relative Humidity	20 - 90% RH (no condensation)

5. Product Overview

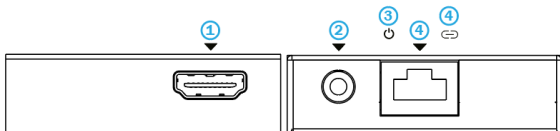
5.1 Transmitter Panel



No.	Name	Function Description
1	HDMI IN	HDMI signal input port. Connect to HDM source device such as DVD or Set-top box.
2	EDID DIP switch	The switch is used for selecting EDID Switch to the right position, the extender will copy HDMI loop out display EDID information to signal source; Switch to the left position the extender will copy Receiver display EDID to signal source
3	HDMI OUT	HDMI signal loop out port Connect to HDMI display device such as HDTV.
4	IR OUT	Connect to IR blaster cable, the IR signal is from the IR IN port of the receiver.
5	Power LED	When the transmitter is powered on, the LED will be on

6	CAT	CAT output port. Connect to the CAT input port of the receiver with CAT5E / 6 cable
7	Digital signal indicator light	<ul style="list-style-type: none"> Light on: HDMI signal with HDCP Light flashing: HDMI signal without HDCP. Light off: No HDMI signal
8	DC 12V	DC 12V power supply port

5.2 Receiver Panel



No.	Name	Function Description
1	HDMI OUT	HDMI signal loop out port Connect to HDMI display device such as HDTV.
2	IR IN	Connect to IR receiver cable, the IR signal will emit to the IR OUT port of the transmitter
3	Power LED	When the transmitter is powered on, the LED will be on
4	CAT	CAT output port. Connect to the CAT input port of the receiver with CAT5E / 6 cable

5	Digital signal indicator light	<ul style="list-style-type: none"> • Light on: HDMI signal with HDCP • Light flashing: HDMI signal without HDCP. • Light off: No HDMI signal
---	--------------------------------	---

5.3 IR Pin Definition

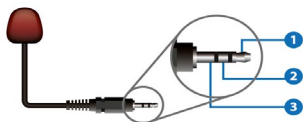
IR Receiver and Blaster pins definition is as below:



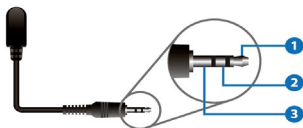
IR RECEIVER



IR BLASTER



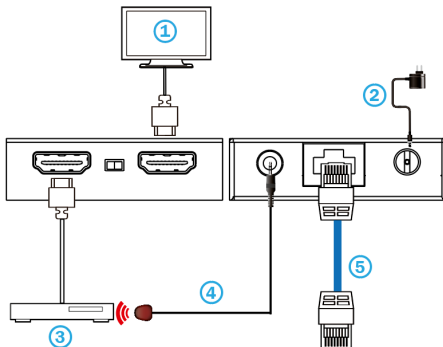
- 1) IR Blaster Signal
- 2) Power
- 3) NC



- 1) IR Signal
- 2) Power
- 3) Grounding

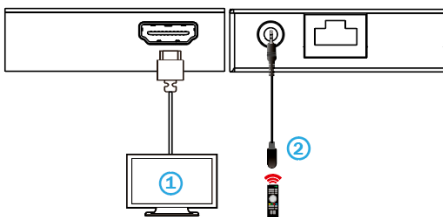
6. Application Example

Transmitter



1. UHDTV	2. Power Supply	3. Blu-ray Player
4. IR Blaster	5. CAT5E/6 cable	

Receiver



1. UHDTV	2. IR Receiver	
----------	----------------	--

Hereby Assmann Electronic GmbH, declares that the Declaration of Conformity is part of the shipping content. If the Declaration of Conformity is missing, you can request it by post under the below mentioned manufacturer address.

www.assmann.com

Assmann Electronic GmbH
Auf dem Schüffel 3
58513 Lüdenscheid
Germany

