



# Wireless Collaboration System Click & Present Pro



## Manual

**DS-55317 Rev. 2 – Set: 2x Transmitter (TX), 1x Receiver (RX)  
DS-55322 Rev. 2 – Additional Transmitter (TX)**

## 1. Introduction

The Wireless Collaboration System from DIGITUS® brings together all your devices (notebook, tablet, smartphone) and offers a presentation solution for wireless transfer of screen content for meeting and conference rooms. Up to 30 participants can be connected with the receiver. Up to 4 participants can present/collaborate simultaneously in split screen. Notebooks can be connected with the HDMI transmitter, the set can be extended with additional transmitters (DS-55322). Share content conveniently from a tablet/smartphone using the screen sync / sharing/cast function (iOS, iPadOS/Android) of your mobile device, to do so first connect your mobile device with the receiver (SSID) via WLAN. The configuration of the system has been optimally simplified here – no additional software/apps are required. Increase the efficiency of your meetings, save time and achieve optimal results. Share - Present - Collaborate.

## 2. Features

- Share, present and collaborate from your notebook, tablet or smartphone – Transmission distance of up to 50m for transmitter to receiver. Tablet or smartphone is within 10m.
- Easy installation – No software or app required.
- Present simultaneously from up to 4 participants in split screen
- Up to 30 participants (simultaneous connection to receiver)
- Share notebook via HDMI transmitter or via wireless screen (Windows)/screen sync (macOS)
- Share from a tablet/smartphone using the screen sync/sharing/cast function (iOS, iPadOS/Android) of your mobile device.
- Touch Panel Back Control – the touch back function of the receiver unit allows finger gestures/controls on a large touch screen to be sent back wirelessly to a Windows PC
- Integrated Whiteboard – the main menu of the receiver provides a whiteboard function and in combination with a touchscreen, allows quick notes during the meeting, the presentation directly on the display.
- Supports Windows, macOS, iOS, iPadOS, Android.
- Expandable with additional HDMI transmitters - DS-55322

### 3. Package Content DS-55317:

- 1x Receiver unit
- 2x HDMI transmitter
- 1x USB charging adapter (10W, 5V/2A)
- 1x Storage tray for HDMI transmitter
- 1x Micro USB cable, 1.5 m
- 1x HDMI cable, 1.15 m
- 2x Graphics adapter (HDMI, jack - USB-C™, plug)
- 2x USB adapter (USB-A, jack - USB-C™, plug)
- 1x User manual



#### PC Requirements:

DS-55317 supports devices with an HDMI port. It supports Windows and macOS PC systems. In case your PC doesn't have an HDMI port (i.e. just equipped with USB-C™ ports), you can use an video adapter or docking station with HDMI interface.

#### Smartphone/Tablet Requirements

To share from smartphone/tablet video to DS-55317, please ensure the devices meet the following requirements:

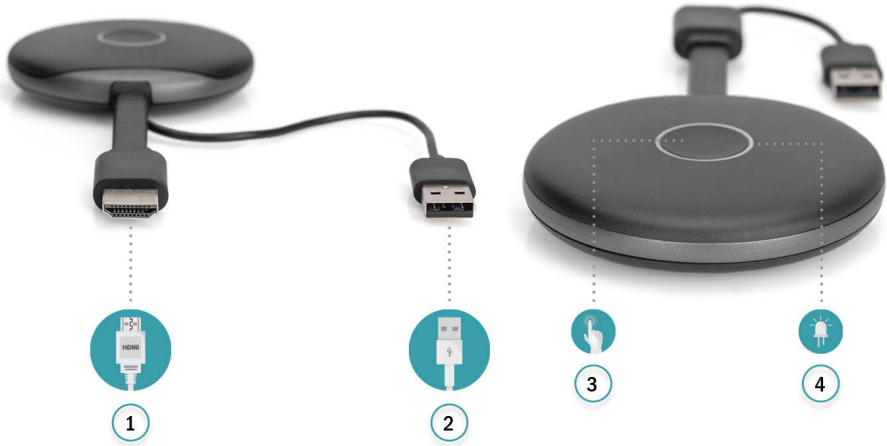
- iOS 9.0 or above / iPadOS 13 or above
- Android 5.0 or above

## 4. Product Specification

<b>Feature</b>	
Video input	1920x1080 (1080p60/50/30/25/24, 1080i60/50) 1280x720(720p60/50) 720x576(576p50);720x480(480p60)
Video decode and output	Up to 4K60 (RX)
Audio	Stereo, 48KHz
Wireless standard	IEEE 802.11b/g/n/ac, 2.4G/5GHz, 2T2R
Latency	About 100ms latency
HDMI Version	HDMI 2.0 (RX) with HDCP2.1
Authentication Protocol	WPA2 (WPAS-PSK / WPA2-Enterprise)
Security	AES 128 bit
Platform supported	Windows, macOS, iOS, iPadOS, Android
Distance	Up to 50 meters (in the clear line of sight)
<b>Transmitter</b>	
Cable	USB cable, HDMI cable
Status LED	1x
Switch button	1x
Power supply	DC 5V/0.5A
Power Consumption	About 2.5W
Dimension	80 x 80 x 14 mm
Weight	80 g
<b>Receiver</b>	
Interfaces	2x USB-A, in, 1x Micro USB, 1x RJ45, 1x HDMI
Status LED	1x
Power supply	DC 5V/2A
Power Consumption	About 10W
Dimension	85 x 104 x 23mm
Weight	305 g
<b>Temperature Range</b>	
Operating:	0°C to + 40°C (+32°F to +104°F)
Storage:	-10°C to + 60°C (+14°F to +140°F)
<b>Humidity</b>	
Operating:	10% to 80% relative humidity
Storage:	5% to 90% relative humidity

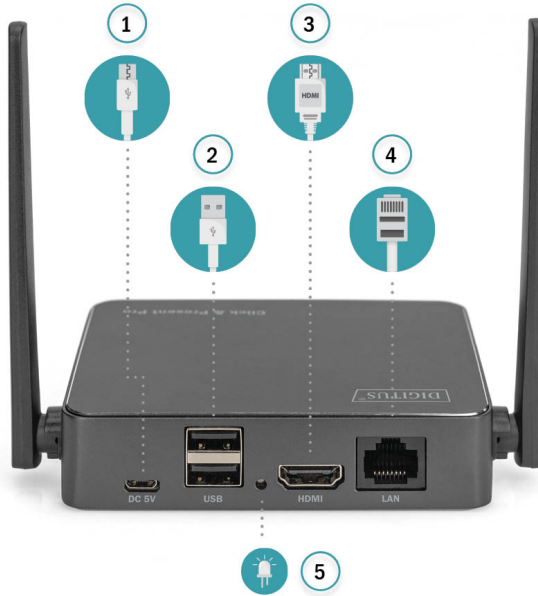
## 5. Product Overview

### Transmitter



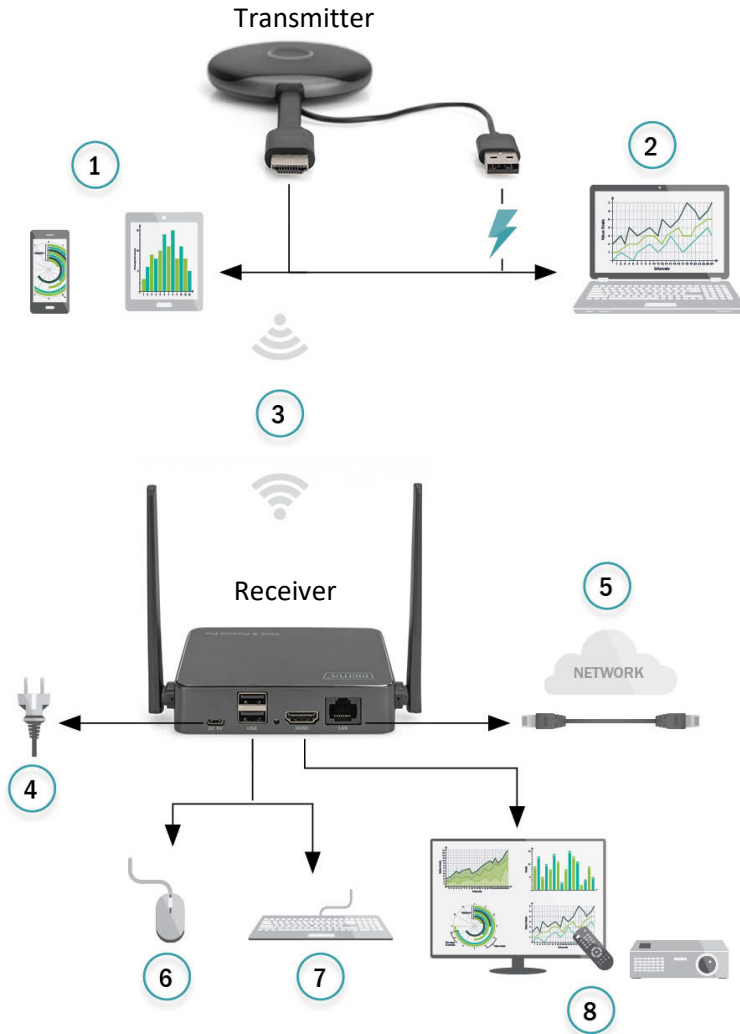
1	HDMI® Type A	Connect computer or other devices with HDMI
2	USB 2.0 Type A	Connect to computer or other devices for power
3	Connection button	Share button with LED indicator: Press to start sharing
4	Status indicator (Indicate different statue)	<ul style="list-style-type: none"> <li>• Static and flashing red: TX is booting on</li> <li>• Flashing blue: Waiting for connection</li> <li>• Static blue: Connected and start to presenting</li> <li>• Flashing purple: No video input</li> </ul>

## Receiver



1	Micro USB 2.0, B	Connect to 5V/2A adapter for power supply
2	2x USB 2.0, A	Connect with touch panel or mouse/keyboard for KVM function
3	HDMI®, A	Connect to TV, projector, and monitor by using the HDMI cable
4	RJ45 (Fast Ethernet)	Connect to router/network for internet access
5	Status indicator	Flashing blue: Waiting for connection Static blue: Connected with TX

## 6. Connection Diagram



1	Smartphone/ Tablet	5	Network Connection
2	Laptop	6	Mouse
3	50 m max. distance	7	Keyboard
4	Power supply	8	TV / Beamer


## 7. Receiver Installation

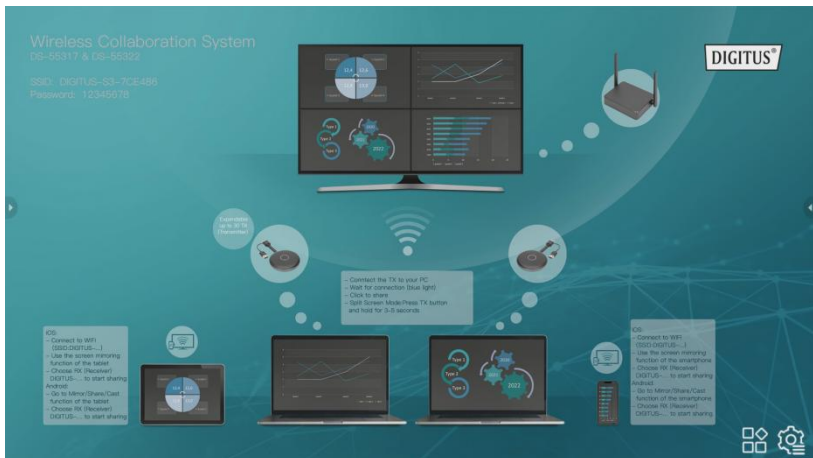
1. Power on the RX via USB power adapter and connect it to the display or projector by HDMI cable
2. Connect the USB cable to the display by USB cable (for touch panel control only)
3. Connect RJ45 cable to your RX to access the internet.

Remark:

- Please ignore step 2 if the display doesn't have a touch panel
- Please ignore step 3 if no need to access the internet


### 7.1 Receiver Settings:

In the bottom right of receiver main page, it's  (Setting) function:

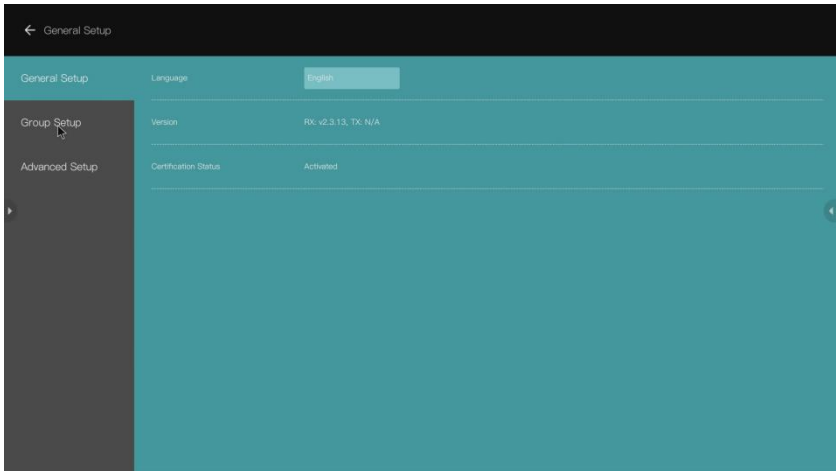




## Settings

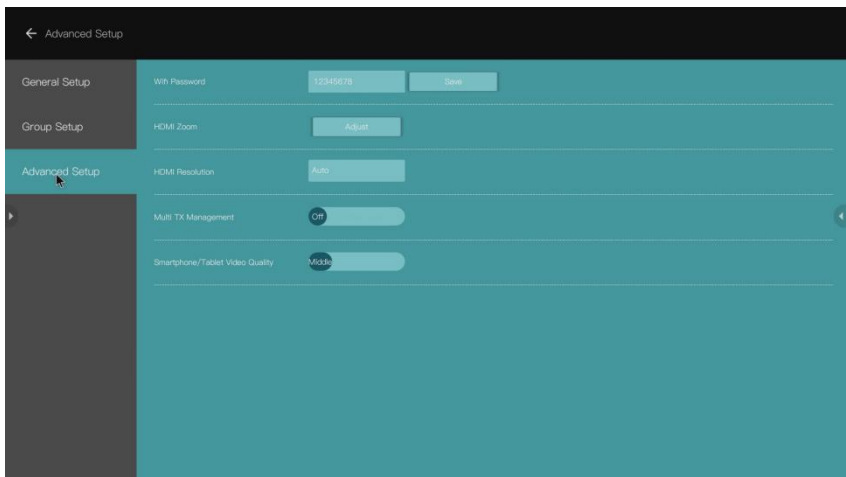
Click  to enter setting page:

1) **General Setup:** user can select the language and check product version



2) **Group Setup:** user can adjust information shown while Multi-User Mode

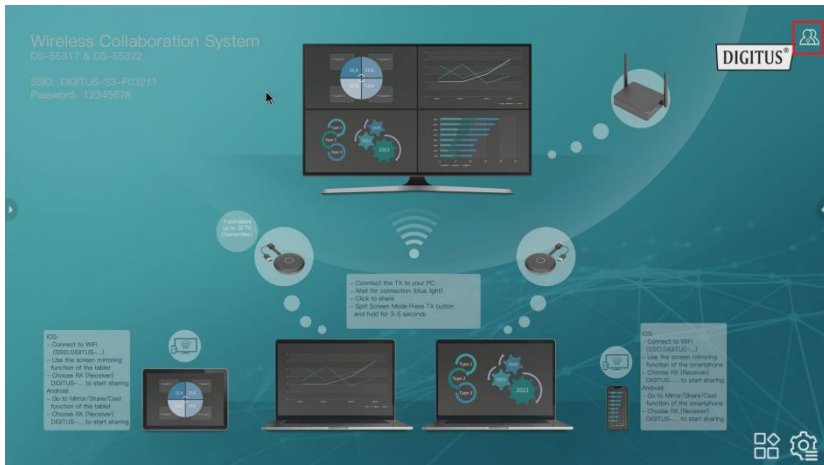
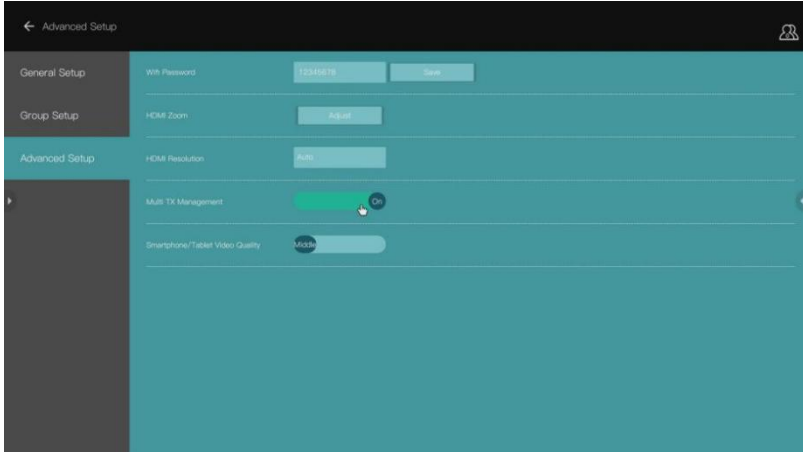
3) **Advanced Setup:**




- SSID Name: set the SSID Name
- Wi-Fi Password: set the SSID password
- HDMI Zoom: adjust the HDMI output size
- HDMI Resolution: set the HDMI output resolution

## 7.2 Multi Transmitter (TX) Management:

When set to ON, the user logos and number of participants which are connected to the RX will be shown on the upper right corner of the main page of RX start screen



Click  logo, the TX (participants) list will be shown on the display. The TX list will be hidden when clicked again. It's easy for the meeting moderator to control each TX on the big screen

# Wireless Collaboration System

DS-55317 & DS-65322  
SSID: DIGITUS-F03211  
Password: 12345678

DIGITUS®



Experiments  
with the TX  
Receiver!



- Connect the TX to your PC
- Wait for connection (blue light)
- Click to share
- Split Screen Mode/Press TX button and hold for 3-5 seconds



- IOS
- Connect to WiFi (SSID: DIGITUS-...)
  - Use the screen mirroring function of the laptop
  - Choose RX (Receiver)
  - DIGITUS... to start sharing
- Android
- Go to Mirror/Share/Cast function of the laptop
  - Choose RX (Receiver)
  - DIGITUS... to start sharing



- iOS
- Connect to WiFi (SSID: DIGITUS-...)
  - Use the screen mirroring function of the smartphone
  - Choose RX (Receiver)
  - DIGITUS... to start sharing
- Android
- Go to Mirror/Share/Cast function of the smartphone
  - Choose RX (Receiver)
  - DIGITUS... to start sharing



## 8. Pairing a Transmitter (TX) and Receiver (RX)

The Wireless Collaboration System (DS-55317) includes 1x Receiver (RX) and 2x Transmitter (TX) units, which are paired already together. Normally you don't need to pair them again.

However, if you need to re-pair or buy an additional Transmitter (DS-55322), you need to follow the instruction below to pair the new transmitter with the receiver.

1. Power on the Receiver (RX) and connect it with the display, please make sure to use USB Power Adapter for the RX
2. Connect the USB cable (USB-A plug) of the Transmitter (TX) to the USB-A port of the Receiver
3. Wait around 15 seconds, the button light of TX will turn to constant blue from red light, and "pairing successful" message will be displayed on the RX screen

*Remark: Repeat the process if needed*



## 9. TX and RX Software Upgrade Guide:

The TX and RX already coming with the latest software, you don't need to upgrade them. In case there will be any software update released in the future, please follow below upgrade guide for software update.

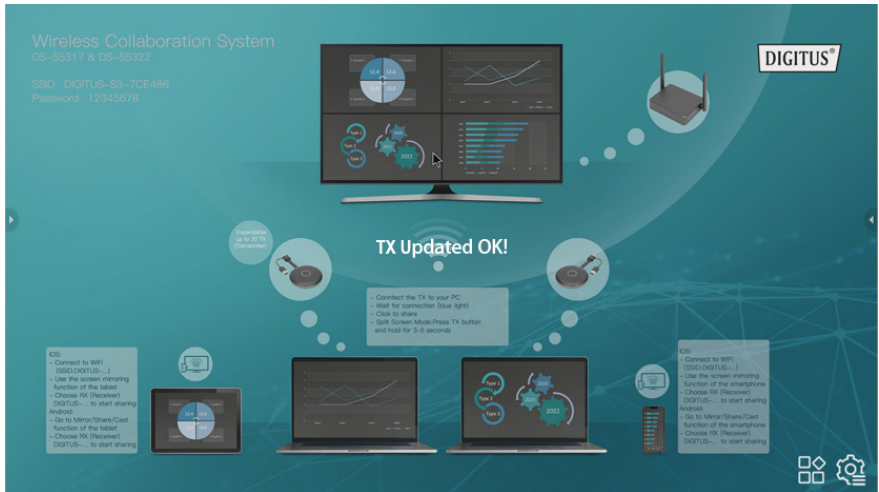
Please always upgrade TX firstly before you upgrade RX.

## 9.1 TX upgrade process:

- 1) Firstly, please make sure TX and RX already paired
- 2) Unzip the upgrade package, and copy "tx\_image, tx\_config.txt" file on the root of a Udisk/Memory stick (Fat32)
- 3) Connect the Udisk/Memory stick with RX USB port and then power on the RX
- 4) After RX enter the main page, power on TX (no need to connect the HDMI cable), then the TX will link with RX automatically
- 5) Then RX will send the upgrade file to TX for upgrade wirelessly, upgrade message will show on the RX screen. During the upgrade process, the TX Red and blue lights will flash alternately.



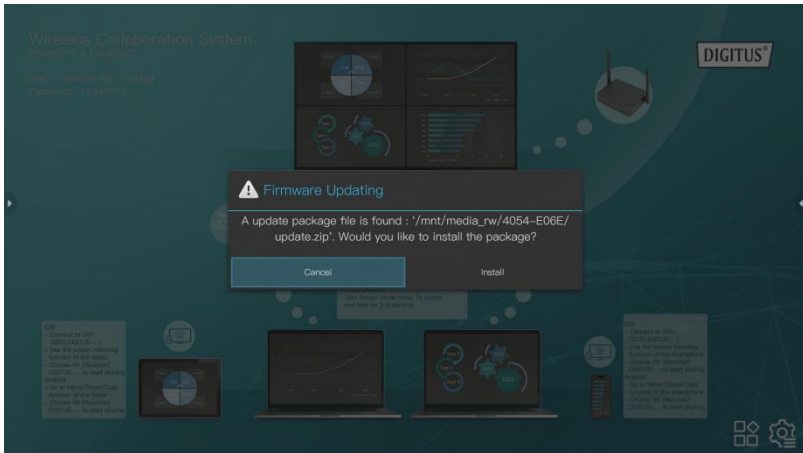
- 6) After upgrade down, the TX light will become flash blue, and “TX updated OK” message will display on the RX screen.



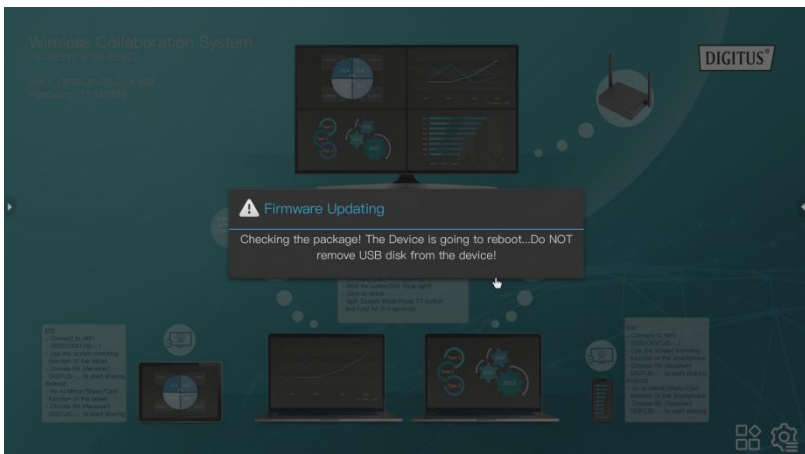
- 7) After the upgrade, please pair TX and RX again. (Please refer to TX and RX pair guide)

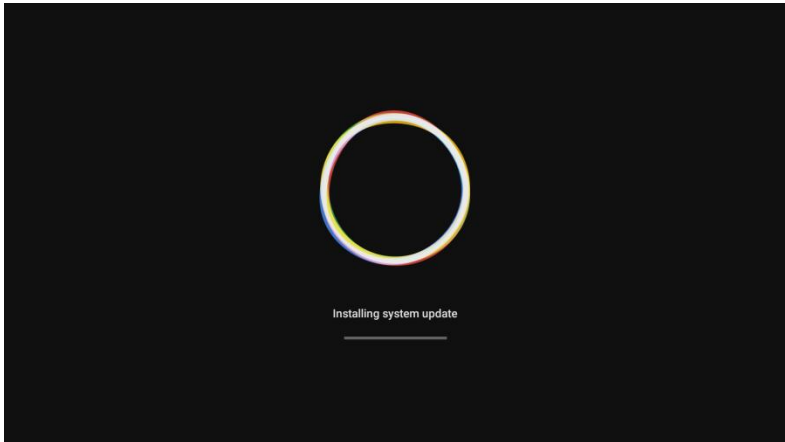
## 9.2 RX upgrade process:

- 1) Change the RX upgrade zip file's name to "update".zip (no need to unzip the file) and copy to the root of USB disk.
- 2) Connect the U disk with RX USB port and then power on the RX.
- 3) The RX will recognize the firmware and update message will be displayed on the screen, please click install for upgrade.

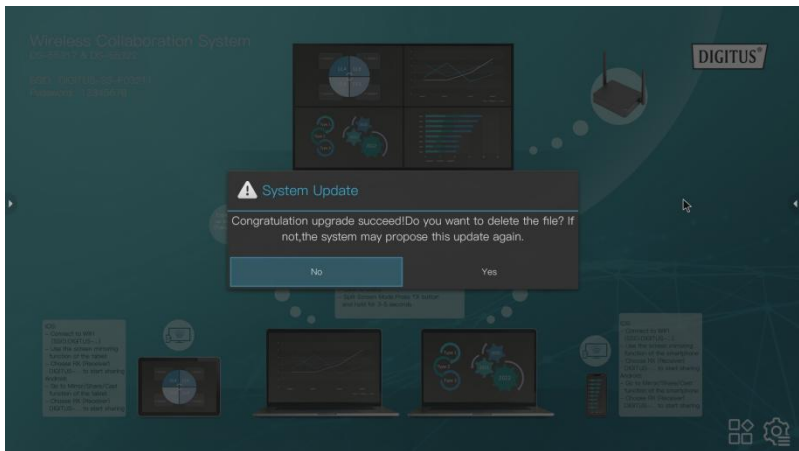


- 4) Then the RX will restart for upgrade.





5) After RX update successfully, message will be displayed on the screen, you can chose to save or delete the file.





## 10. Wireless HDMI Transmitter (TX) Installation

- 1) Connect the HDMI and USB plug to the notebook's inputs.
- 2) The LED indicator of the TX will turn red when it's booting up.



- 3) The LED indicator will become blue and flashing when the TX is ready to stream.

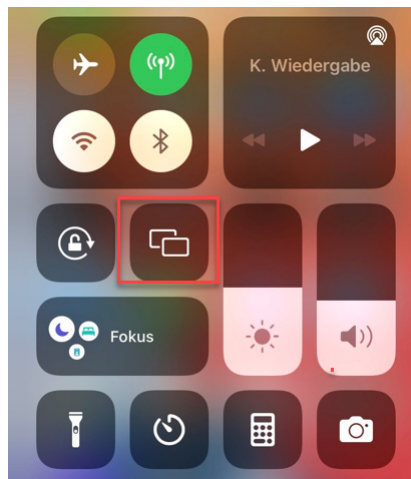


- 4) The LED indicator will become constant blue when click the button to start presenting.



# 11. Streaming from Smartphone/Tablet

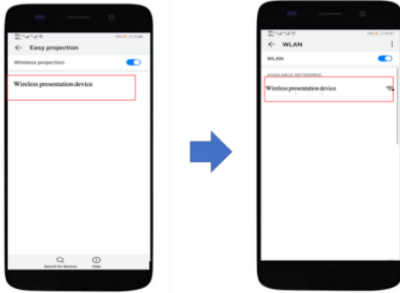
## 1. iOS devices



- Search RX (Receiver) SSID and connect in Wifi settings. (SSID: DIGITUS..., Password: 12345678), the is SSID shown on the left upper corner of the RX start screen
- Use the screen mirroring function of the smartphone
- Choose RX (Receiver) DIGITUS-... to start sharing

*Remark: if the RX already connect with your office network, and the iOS devices are in the same network, in this case, it's no need for the iOS devices to connect with the RX SSID first*

## 2. Android devices

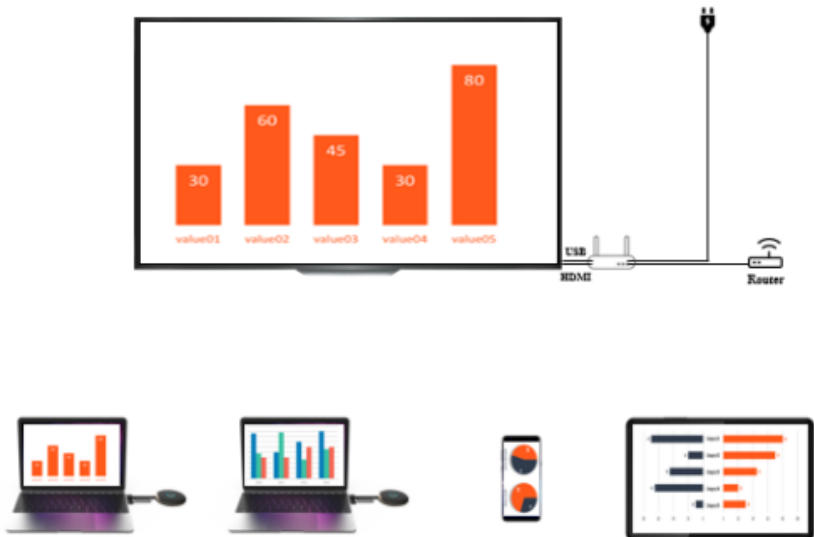


- Make sure your android devices Wi-Fi is activated/available
- Go to the Mirror/Share/Cast function of the smartphone
- Choose RX (Receiver) DIGITUS-... to start sharing

*Remark: there are different names on different brands of phones or tablets: WIFI Display, WLAN Display, Wireless Display, Allshare Display, Allshare Cast, Wireless Display, MirriorShare, etc.*

## 12. Multi-User Application & Multi- / Split-Screen Mode

### 1. Single-Screen Mode:



- If there is one Transmitter (TX), press the button on TX shortly, the

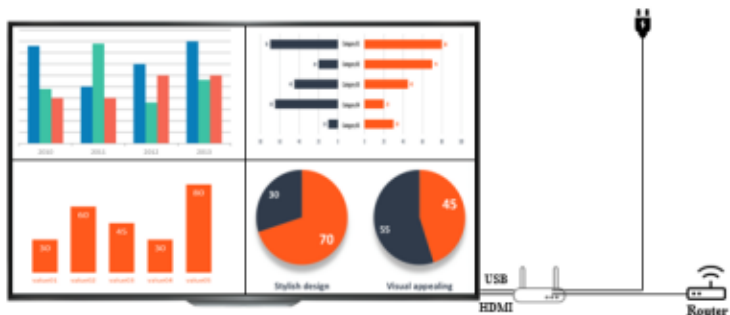
- screen of the notebook will be shared to the big screen
- If there are two or more Transmitter, just click the button of the TX you want to share on your big screen. You can easily switch between various TX by pressing the button of the corresponding TX – easy click & share.
- If you want to share content from a Smartphone or Tablet, please follow the streaming process described before on 11. “Streaming from Smartphone/Tablet”

*Remark:*

*If a HDMI Transmitter (TX) is connected with the HDMI Receiver (RX), please unpair the TX and the RX by press the button on TX first, start screen will be shown. Then you can connect a mobile device. Priority is HDMI Transmitter (TX) before mobile device (smartphone/tablet).*

## 2. Multi-Screen / Split-Screen Mode:

*Remark: Android devices don't support multi-screen mode*



## **Only Wireless HDMI Transmitter (TX) in Split Screen | up to 4 Notebooks**

- 1) Please connect the first Transmitter with the Receiver by short press the button on Transmitter, you will see the content of first TX on the big screen
- 2) To share the second Transmitter, please press the button on the second TX and hold it for 3-5 seconds, the Receiver screen will split to Multi-Screen / Split-Screen Mode – you will see content of both TX on the big screen
- 3) To add the third and fourth TX, please repeat the process, hold the button of the TX you want to add/share

## **Wireless HDMI Transmitter (TX) and iOS Smartphone/Tablet in Split Screen**

### **Example 1): 1x Wireless HDMI Transmitter (TX) + 1x iOS Mobile Device**

- 1) Please connect first the Mobile Device with the Receiver (connect to RX SSID *as explained before under 11.*), then use screen mirroring function of the mobile device, you will see the content of the device on the big screen
- 2) To add now the Wireless HDMI Transmitter (notebook) to the Receiver screen, please press the button on the TX and hold it for 3-5 seconds, the Receiver screen will split to Multi-Screen / Split-Screen Mode – you will see content of Mobile Device & TX on the big screen

### **Example 2): 2x Wireless HDMI Transmitter (TX) + iOS Mobile Device**

- 1) Please connect the first Transmitter with the Receiver by short press the button on Transmitter, you will see the content of first TX on the big screen
- 2) To share the second Transmitter, please press the button on the second TX and hold it for 3-5 seconds, the Receiver screen will split to Multi-Screen / Split-Screen Mode – you will see content of both TX on the big screen
- 3) Please connect then the Mobile Device with the RX (connect to RX SSID *as explained before under 11.*), then use screen mirroring function of the mobile device. The RX screen will split into 4-screen split and you will see

the content of the 2x TX and the Mobile Device on the big /RX) screen

*Remark:*

- *If you now want to add a second Mobile Device, just repeat the steps for sharing Mobile Device on point 3)*
- *If you now want to add a third TX, just repeat the steps for Wireless HDMI Transmitter on point 2)*

*In the multi-screen mode, if you use iOS devices, please ensure that your iOS devices are connected to the RX first. Please follow the streaming process described before on 11. "Streaming from Smartphone/Tablet – iOS Devices"*

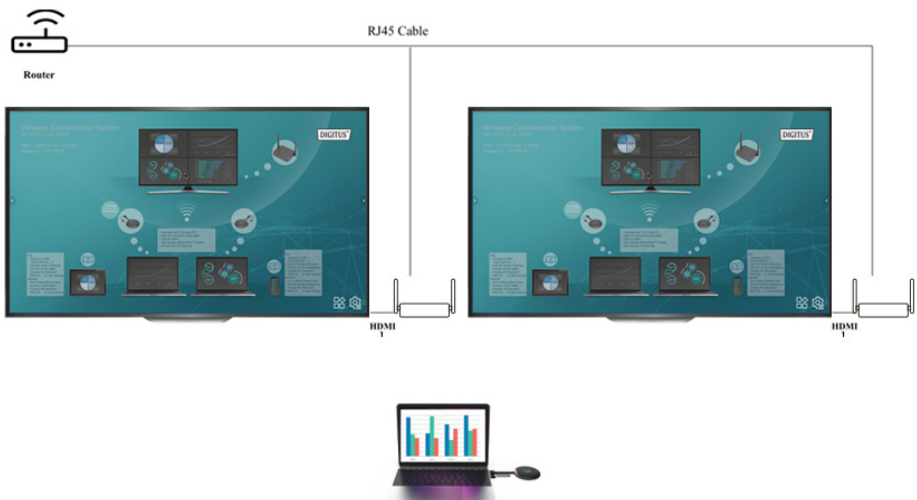
### 3. How to quit multiple screens split mode:

Click any Wireless HDMI TX button shortly to switch to one single screen mode

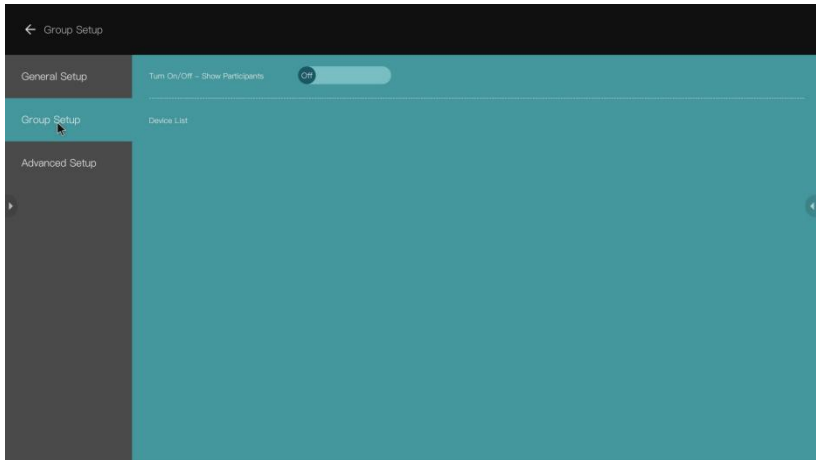
## 13. Multicast or Display Group Setup

In the group mode, where video transmission from one transmitter is addressed to a group of receivers simultaneously

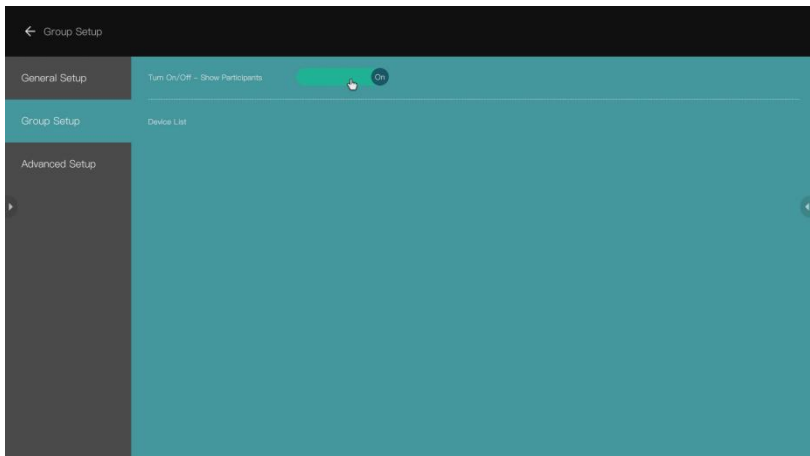
Step 1: Connect different RX with same router to make sure the different receivers in the same subnet



Step 2: Please click into the settings of the main Receiver (RX) and select the Display Group Setup



Step3: Turn on Display Group function, all the receivers which are in the same subnet will be listed on the Device List, please select the receivers which you want to join the display group and confirm, then the screen will stream to other receivers



## 14. Touch Panel Control:

DS-55317 supports touch panel back control function when connecting with a touch screen/panel. User can touch the big screen to control the PC easily

Step 1: Connect the Receiver (RX) via HDMI cable with the display (touch panel) and use a USB cable to connect your display to the USB-A Port of the RX for touch back control

Step 2: Connect the Transmitter (TX) with your PC via HDMI/USB cable

Step 3: Touch the display to control the PC



*Remark: macOS devices don't support touch back control function.*

## 15. White Board Function:

DS-55317 supports instantly edit, draw and write on the big screen with touch panel

Step 1: Click the White Board icon from the start screen of the RX on the to enter the white board function

Step 2: You will find white board function at the left side of the main menu, click the pen icon to enter to white board mode, now you can write, draw, edit on the display

*Remark: If you are using a regular TV (without touch panel) you can use the white board function by connecting a PC mouse to the USB-A port of the RX*



Wireless Collaboration System  
 DS-85317 & DS-55322

SID: DIGITUS-03-F03211  
 Password: 12345678

DIGITUS®

DS-85317 is designed for:  
 - DS-85317 (DS-85317)  
 - DS-85317 (DS-85317)  
 - DS-85317 (DS-85317)  
 - DS-85317 (DS-85317)  
 - DS-85317 (DS-85317)  
 - DS-85317 (DS-85317)  
 - DS-85317 (DS-85317)  
 - DS-85317 (DS-85317)

DS-55322 is designed for:  
 - DS-55322 (DS-55322)  
 - DS-55322 (DS-55322)  
 - DS-55322 (DS-55322)  
 - DS-55322 (DS-55322)  
 - DS-55322 (DS-55322)  
 - DS-55322 (DS-55322)  
 - DS-55322 (DS-55322)  
 - DS-55322 (DS-55322)

DS-85317 is designed for:  
 - DS-85317 (DS-85317)  
 - DS-85317 (DS-85317)  
 - DS-85317 (DS-85317)  
 - DS-85317 (DS-85317)  
 - DS-85317 (DS-85317)  
 - DS-85317 (DS-85317)  
 - DS-85317 (DS-85317)  
 - DS-85317 (DS-85317)

DS-55322 is designed for:  
 - DS-55322 (DS-55322)  
 - DS-55322 (DS-55322)  
 - DS-55322 (DS-55322)  
 - DS-55322 (DS-55322)  
 - DS-55322 (DS-55322)  
 - DS-55322 (DS-55322)  
 - DS-55322 (DS-55322)  
 - DS-55322 (DS-55322)

Wireless Collaboration System  
 DS-85317 & DS-55322

SID: DIGITUS-03-F03211  
 Password: 12345678

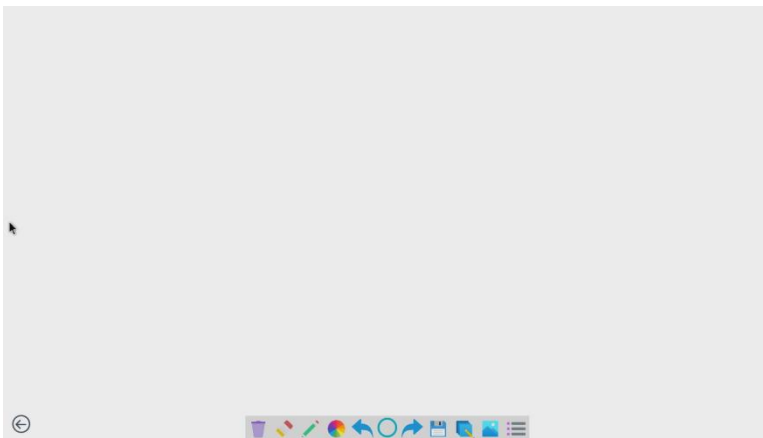
DIGITUS®

DS-85317 is designed for:  
 - DS-85317 (DS-85317)  
 - DS-85317 (DS-85317)  
 - DS-85317 (DS-85317)  
 - DS-85317 (DS-85317)  
 - DS-85317 (DS-85317)  
 - DS-85317 (DS-85317)  
 - DS-85317 (DS-85317)  
 - DS-85317 (DS-85317)

DS-55322 is designed for:  
 - DS-55322 (DS-55322)  
 - DS-55322 (DS-55322)  
 - DS-55322 (DS-55322)  
 - DS-55322 (DS-55322)  
 - DS-55322 (DS-55322)  
 - DS-55322 (DS-55322)  
 - DS-55322 (DS-55322)  
 - DS-55322 (DS-55322)

DS-85317 is designed for:  
 - DS-85317 (DS-85317)  
 - DS-85317 (DS-85317)  
 - DS-85317 (DS-85317)  
 - DS-85317 (DS-85317)  
 - DS-85317 (DS-85317)  
 - DS-85317 (DS-85317)  
 - DS-85317 (DS-85317)  
 - DS-85317 (DS-85317)

DS-55322 is designed for:  
 - DS-55322 (DS-55322)  
 - DS-55322 (DS-55322)  
 - DS-55322 (DS-55322)  
 - DS-55322 (DS-55322)  
 - DS-55322 (DS-55322)  
 - DS-55322 (DS-55322)  
 - DS-55322 (DS-55322)  
 - DS-55322 (DS-55322)



## Frequency Range & Maximum Transmit Power

WiFi Standard: 802.11b/g/n/ac 5G WiFi

Channel: 36, 40

Core Frequency: 5180, 5200

Range: 5170 ~ 5210MHz

Bandwidth: 20/40MHz

Transmitter power: 13 dBm max

SW version: RX: v2.3.13, TX: v2.3.4

HW version:

TX: S200TX-LC01-01

RX: G300RX-LC01-01

## Important safety instructions

Please read the following safety instructions carefully before installation and operation:

1. Observe all warnings and instructions concerning this device
2. Do not expose the device to rain, moisture, vapors or liquids
3. Do not insert any objects into the device
4. Do not attempt to repair the unit yourself or open the cabinet. Risk of electric shock!
5. Ensure adequate ventilation to prevent damage due to overheating
6. Turn off the power supply and make sure the environment is safe before installation
7. In the event of thunderstorms, there is a risk of lightning strike and damage to connected electrical equipment due to overvoltage
8. Do not install this device during a thunderstorm
9. Disconnect the device from the connected electrical appliances during a thunderstorm
10. Use the device inside buildings only
11. Return the device to your dealer in case of repair
12. Dust, moisture, vapors and strong cleaning agents or solvents can damage the device
13. Disconnect the device from the power supply and the connected devices before cleaning

14. Clean the device with a lint-free cloth
15. To completely disconnect the system from the mains, the power supply unit must be unplugged from the socket. The power supply unit serves as a disconnecting device for separating the system from the mains.

## Disclaimer

The terms HDMI and HDMI High-Definition Multimedia interface, and the HDMI Logo are trademarks or registered trademarks of HDMI Licensing LLC in the United States and other countries.

Hereby Assmann Electronic GmbH declares that the Declaration of Conformity is part of the shipping content. If the Declaration of Conformity is missing, you can request it by post under the below mentioned manufacturer address.

**[www.assmann.com](http://www.assmann.com)**

Assmann Electronic GmbH

Auf dem Schüffel 3

58513 Lüdenscheid

Germany

