



**DS-23100-1/DS-23200-1/DS-23300-1**  
**4 ports / 8 ports / 16 ports**  
**USB / PS/2 Combo-KVM Switch**



**Manual**

**DS-23100-1•DS-23200-1•DS-23300-1**

## NOTE

This equipment has been tested and found to comply with the limits for a class B digital device, pursuant to part 15 of the FCC rules. These limits are designed to provide reasonable protection against harmful interference in a residential installation. This equipment generates, uses and can radiate radio frequency energy and, if not installed and used in accordance with the instruction manual, may cause harmful interference to radio communications. However, there is no guarantee that interference will not occur in a particular installation. If this equipment does cause harmful interference to radio or television reception, which can be determined by turning the equipment off and on, the user is encouraged to try to correct the interference by one or more of the measures listed below.

- ◆ Reorient or relocate the receiving antenna
- ◆ Increase the separation between the equipment and receiver
- ◆ Connect the equipment into an outlet on a circuit different from that to which the receiver is connected
- ◆ Consult the dealer or an experienced radio/television technician for help



## PRODUCT MODEL LIST

Model	Specification
DS-23100-1	4 input (USB & PS/2) 1 output (USB), Supporting cascade & hub.
DS-23200-1	8 input (USB & PS/2) 1 output (USB), Supporting cascade & hub.
DS-23300-1	16 input (USB & PS/2) 1 output (USB), Supporting cascade & hub.

## PACKING LIST

The complete 4 port/ 8 ports/16 ports USB / PS/2 KVM switch package consists of:

- ◆ 4 ports/8 ports/16 ports USB/PS/2 KVM switch
- ◆ Power Adapter
- ◆ User Manual

Please check to make sure that all the components are present and that nothing was damaged in shipping. If you encounter a problem, contact your dealer.

Read this manual thoroughly and follow the installation and operation procedure carefully to prevent any damage to the unit, and/or any of the devices that connect to it.

OVERVIEW .....	4
FEATURES.....	4
HARDWARE REQUIREMENT .....	4
CONSOLE .....	4
COMPUTER .....	5
CABLE .....	5
INTRODUCTION.....	5
DS-23100-1 FRONT VIEW .....	5
DS-23200-1 FRONT VIEW .....	5
DS-23300-1 FRONT VIEW .....	5
DS-23100-1 REAR VIEW .....	6
DS-23200-1 REAR VIEW .....	6
DS-23300-1 REAR VIEW .....	6
INSTALLATION .....	7
BEFORE YOU BEGIN .....	7
SINGLE STAGE INSTALLATION.....	7
OPERATION.....	9
HOT PLUGGING .....	9
POWERING OFF AND RESTARTING.....	9
PORT SELECTION.....	9
OSD OPERATION.....	10
OSD OVERVIEW.....	10
OSD NAVIGATION .....	10
OSD MAIN SCREEN HEADINGS.....	11
OSD FUNCTIONS .....	11
TROUBLESHOOTING .....	13
SPECIFICATION .....	14
SAFE GUIDE.....	14

## OVERVIEW

4 ports / 8 ports / 16 ports USB / PS/2 KVM (Keyboard, Video, Mouse) Switches are control units that allow access and control of up to 4 (DS-23100-1), 8 (DS-23200-1) or 16 (DS-23300-1) computers from a single USB / keyboard, USB / mouse, and monitor console.

There are two convenient methods to access any computer connected to the installation: (1) using the push button port selection switches located on each unit's front panel; (2) selecting from menus provided by the On Screen Display (OSD).

Setup is fast and easy: simply plug cables into their appropriate ports. There is no software to configure, and no incompatible problems. It works on multiple operating platforms (PC compatible, Sun, etc.).

There is no better way to save time and money than with a DS-23100-1/DS-23200-1/DS-23300-1

Installation:.. Since a single console manages all of the computers, the DS-23100-1/DS-23200-1/DS-23300-1 setup (1) eliminates the expense of having to purchase a separate keyboard, monitor, and mouse for each computer; (2) saves all the space those extra components would take up; (3) saves on energy costs; (4) eliminates the inconvenience and wasted effort involved in constantly moving from one computer to another.

## FEATURES

- ◆ One console controls 4 , 8 or 16 computers
- ◆ Be compatible with USB/keyboard and mouse in console and PS/2, USB keyboard and mouse in computer
- ◆ Computer selection via front panel switches and OSD
- ◆ LEDs display for easy status monitoring
- ◆ Auto Scan Mode for monitoring all computers
- ◆ Superior video quality
- ◆ Easy installation – no software required
- ◆ Hot pluggable – add or remove computers for maintenance without powering down the switch
- ◆ Support Windows, Solaris etc

## HARDWARE REQUIREMENT

### CONSOLE

- ◆ A VGA, SVGA monitor capable of the highest resolution that you will be using on any computer in the installation
- ◆ A USB/mouse
- ◆ A USB/keyboard

## COMPUTER

The following equipment must be installed on each computer:

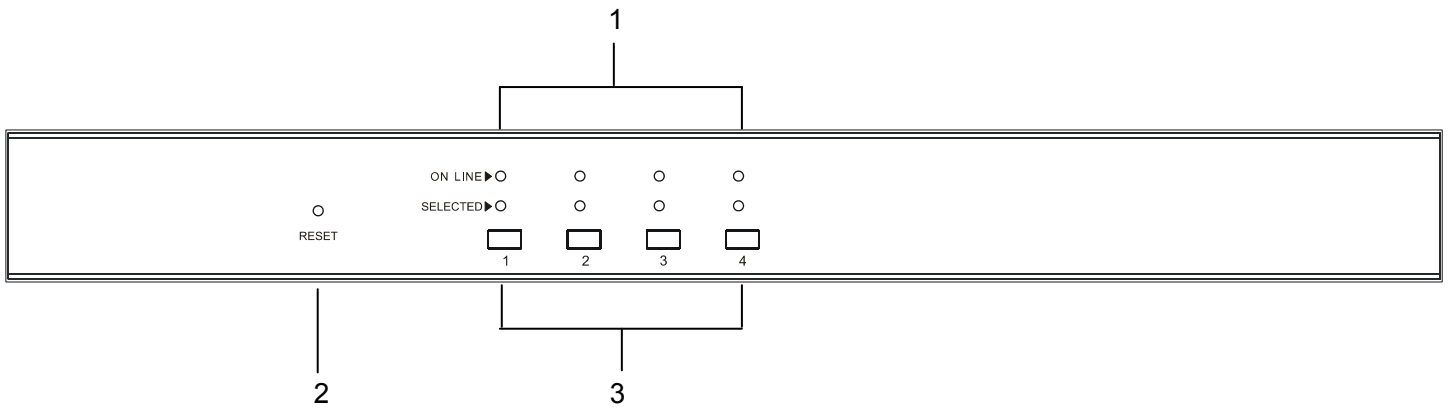
- ◆ A VGA, SVGA card
- ◆ PS/2, USB keyboard and mouse ports

## CABLE

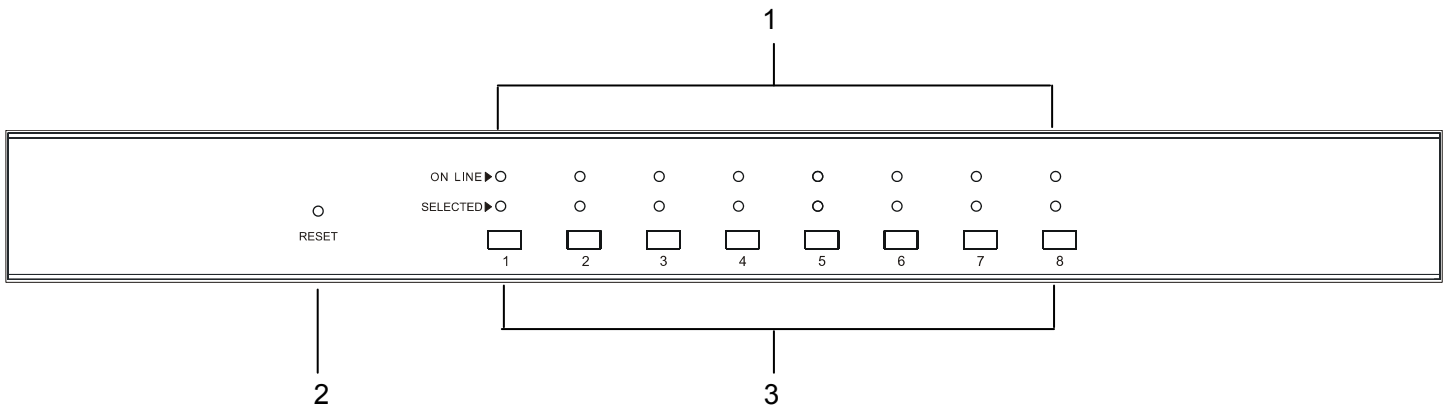
Only customized KVM cable sets, which are specially designed to work with these switched, may be used. To purchase custom KVM cable sets, contact your dealer.

## INTRODUCTION

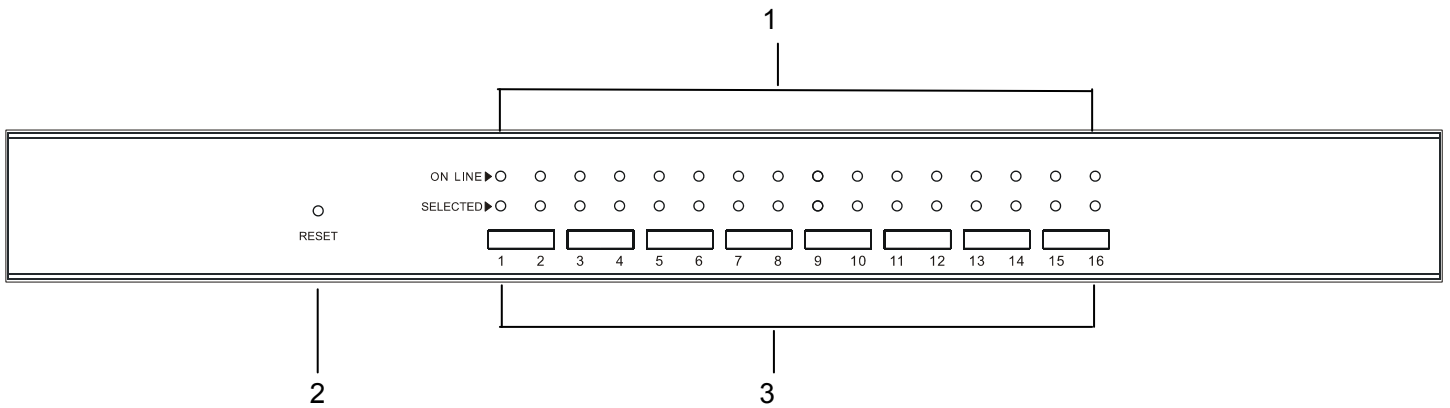
### DS-23100-1 FRONT VIEW



### DS-23200-1 FRONT VIEW



### DS-23300-1 FRONT VIEW



## 1. Port LEDs

The port LEDs are built into the Port Selection Switches. The upper ones are the On Line LEDs; the lower ones are the Selected Port LEDs:

- ◆ The On Line LEDs light RED to indicate that the computer attached to the corresponding port is up and running
- ◆ The Selected LEDs light GREEN to indicate that the computer that attached to the corresponding port is the one that has the KVM focus

## 2. Reset

- ◆ If KVM has no responding, plug needle or ballpoint pen into the hole to reset KVM.

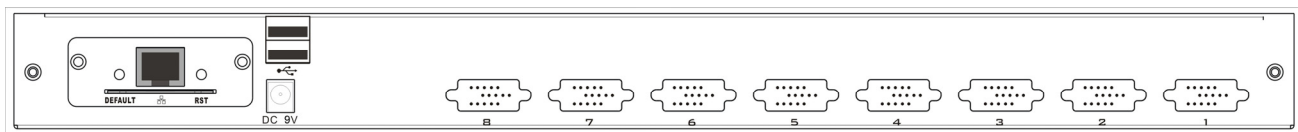
## 3. Port Selection Switches

- ◆ Press a switch button to access the computer attached to its corresponding port.

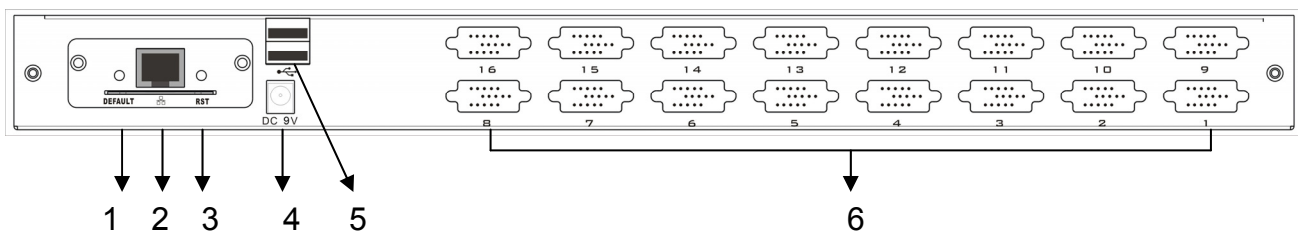
### DS-23100-1 with IP module rear view



### DS-23200-1 with IP module rear view



### DS-23300-1 with IP module rear view



1. IP Module (optional) Restore to Default
  - ◆ Plug needle or ballpoint pen into the hole to restore the IP module to default setting
2. RJ45 Port
  - ◆ CAT UTP can be plugged into it to be connected to the LAN including the controlling computer
3. IP Module Reset
  - ◆ If the IP module has no responding, plug needle or ballpoint pen into the hole to reset it
4. Power Jack
  - ◆ The DC 9V~12V power supply cable plugs into this jack
5. USB Port
  - ◆ Ports to plug in your USB keyboard and mouse are found here
6. Computer Port
  - ◆ Port to connect computer

**Note: For operation of IP module, please refer to DS-51000 the related user manuals.**

## **INSTALLATION**

### **START**

1. Make sure that power to all the devices you will be connecting up have been turned off
2. To prevent damage to your installation, make sure that all devices on the installation are properly grounded

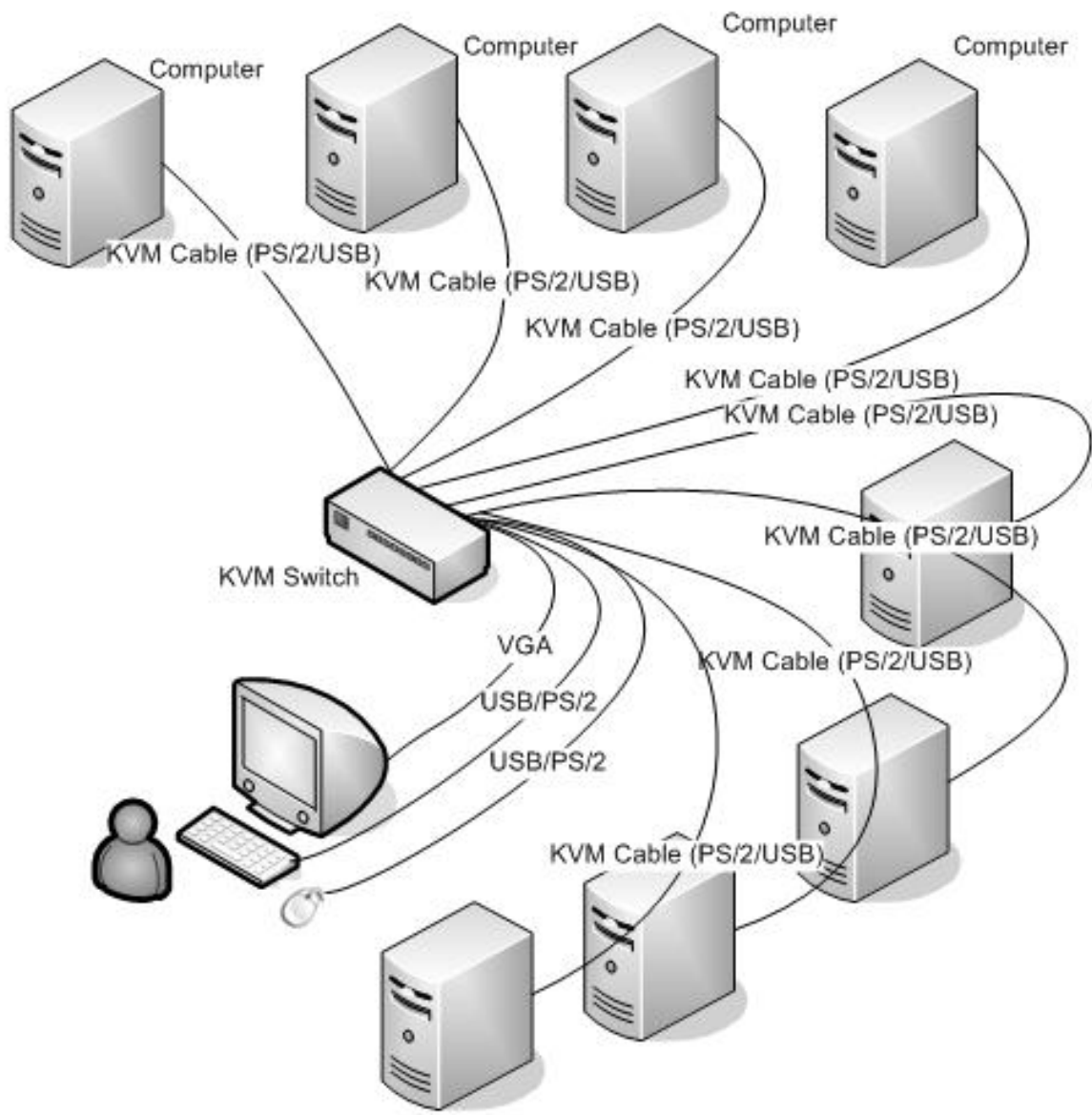
### **INSTALLATION STEP BY STEP**

To set up your DS-23100-1/DS-23200-1/DS-23300-1 installation, do the following:

1. Plug your USB / keyboard, USB / mouse and monitor into the console port section located on the unit's rear panel
2. Using a KVM cable set, plug the custom SPDB connector into any available CPU port on the switch
3. At the other end of the cable, plug the keyboard, mouse, video cables into their respective ports on the computer
4. Plug the power adapter cable into the switch's power jack, and then plug the power adapter into an AC power source.
5. Repeat step 2-4 for any other computers you are connecting up.

This completes the single stage installation, and you can turn on the power to the computers.

NOTE: The DS-23100-1/DS-23200-1/DS-23300-1 initially links to computer connected to the first CPU port.





## **OPERATION**

### **HOT SWAP**

The DS-23100-1/DS-23200-1/DS-23300-1 supports hot plugging. Components can be removed and added back into the installation by unplugging and replugging their cables from their respective ports without the need to shut the switch down. For hot plugging to work properly, the following procedure must be observed:

Hot Swap CPU Ports:

When to plug or unplug the cable from the port;

1. The cable must be plugged back to the same port it removed

**NOTE:** The console section does not support hot plugging of PS/2 mouse and keyboard.

### **POWER OFF AND REBOOT**

If it becomes necessary to power off one of the KVM unit, before starting it back up you must do the following:

1. Shut down all the computers that are attached to the unit

Note: If the unit is operating under external power, unplug the power adapter cable.

2. Wait 10 seconds, then plug the power adapter back and power on all computers

### **PORT SELECTION**

The DS-23100-1/DS-23200-1/DS-23300-1 provides two methods to obtain instant access to any computer in your installation: manual and OSD.

#### Manual

Simply press the appropriate port selection switch on the DS-23100-1/DS-23200-1/DS-23300-1's front panel. After pressing the switch, the selected LED lights will indicate that the port has the KVM focus.

#### OSD

OSD (On Screen Display), provides a menu driven interface to handle the computer switching procedure to provide instant access to any computer on the installation. OSD operation is discussed below.

## OSD OPERATION

### OSD OVERVIEW

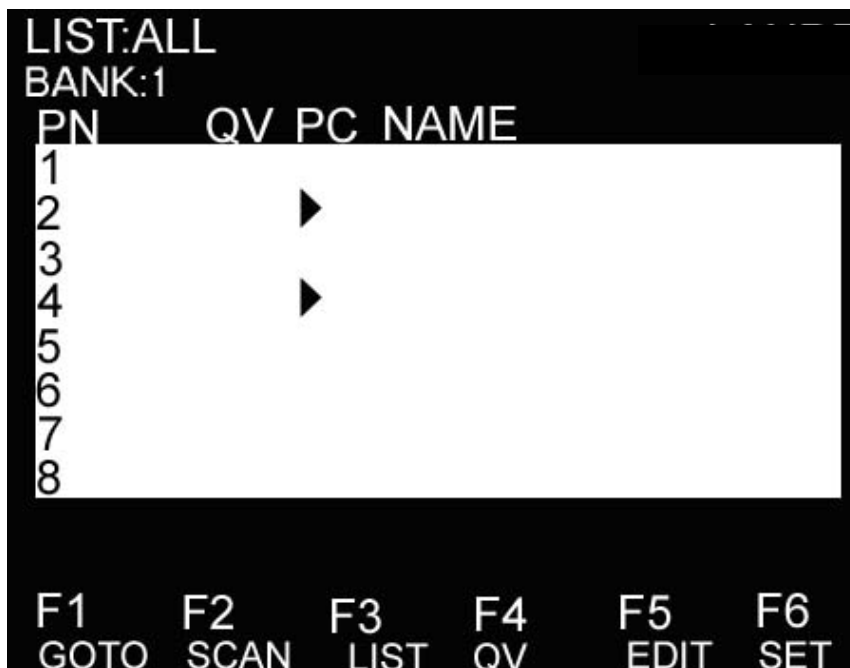
The On Screen Display (OSD) is used to handle all computer control and switching procedures. All procedures start from the OSD main menu. To pop up the main menu, tap the [Scroll Lock] twice.

Note: You can optionally change the hotkey to the Ctrl key, in which case you would tap [ctrl] twice.

If OSD menu is set as “console locked”, you must input password each time the main menu appears. If no password has been set, just press [Enter] to show main menu.

Note: There are two passwords in OSD. One is user password which is initially empty. And the other is factory password which is “admin”.

OSD menu interface is shown as below:



Note: OSD always starts in List View, with the highlight bar at the same position it was in the last time it was closed.

### OSD NAVIGATION

To dismiss OSD, press [Esc].

To move up and down through the list one line at a time, use the Up and Down Arrow Keys. If there are more list entries than what can appear on the main screen, the screen will scroll.

To activate a port, move the highlight bar to it then press [Enter].

After selecting a port, the OSD menu automatically disappears and a blue tip window appears to indicate the port currently selected.

## OSD MAIN SCREEN HEADINGS

Heading	Explanation
PN	This column lists the port numbers for all the CPU ports on the installation. The simplest method to access a particular computer is to move the highlight bar to it, then press [Enter].
QV	If a port has been selected for Quick View scanning, an arrowhead symbol displays in this column to indicate so.
PC	The computers that are powered on and are on line have an arrowhead symbol in this column to indicate so.
NAME	If a port has been given a name, its name appears in this column.

## OSD FUNCTIONS

OSD functions are used to configure and control the OSD. For example, you can: rapidly switch to any port; scan selected ports only; limit the list you wish to view; designate a port as a Quick View Port; create or edit a port name; or make OSD setting adjustments.

### F1 GOTO:

GOTO allows you to switch directly to a port either by keying in the port's name or its port number.

To use NAME method, move highlight bar to "NAME", press [Enter], input name of a port, then press [Enter] to confirm.

To use PN method, move highlight bar to "PN", press [Enter], input port number, then press [Enter] to switch. If the port number is invalid, it will remind the user to input again.

To switch to other BANK, move highlight bar to "BANK", press [Enter], input bank number, then press [Enter] to switch to the specified bank. If the bank is invalid, it will remind the user to input again.

Note: When keying name, if there is a matching name, the matched name will appear on the screen, just press [Enter] to switch to that port.

To return to main menu, press [Esc].

### F2 SCAN

The SCAN function can automatically scan from current selected port, the scan interval can be set by users. When scanning, a small window on the screen indicates the current port number. Press [Space] to stop scanning, and the KVM switches to the port last scanned.

### F3 LIST

The LIST function lets you broaden or narrow the scope of which ports the OSD displays on the main screen.

Many of the OSD functions only operate on the computers that have been selected for listing on the main screen with this function. The choices and their meanings are given in the table below:

Choice	Meaning
ALL	Lists all of the ports on the installation.
QVIEW	Lists only the ports that have been selected as Quick View Ports.
POWERED ON	Lists only the ports that have their attached computers powered on.
POWERED ON + QVIEW	Lists only the ports that have their attached computers powered on and have been selected as Quick View Ports.
QVIEW + NAME	Lists only the ports that have been selected as Quick View Ports and have name.
NAME	Lists only the ports that have names.

Move the highlight bar to the choice you want, then press [enter]. An icon appears before the choice to indicate that it is the currently selected one.

After you make your choice and press [Enter], you return to the OSD main screen with the newly formulated list displayed.

#### **F4 QV**

QV function can select port as Quick View. Move the highlight bar to a port, press [F4], an icon of up triangle appears. Press [F4] again, the icon disappears.

#### **F5 EDIT**

EDIT function creates or edits the name of a port. Press [F5], a pink edit box will appear on the screen. Input name, and then press [Enter], the port is set a name and it will also appear on the screen.

#### **F6 SET**

SET function configures the OSD menu. Move the highlight bar to an option, press [Enter] to enter a setting option.

CHANNEL DISPLAY MODE: Mode of small tip window.

Choices and meanings are below:

Choice	Meaning
PN + NAME	Tip window displays port number and port name.
PN	Tip window displays port number.
NAME	Tip window displays port name.

Move the highlight bar to an option and press [Enter] to select it.

**CHANNEL DISPLAY DURATION:** Time the tip window last.

Options are following:

- ◆ 3 SECOND The tip window lasts for 3seconds
- ◆ ALWAYS ON The tip window always on the screen

Move the highlight bar to an option and press [Enter] to select it.

**CHANNEL DISPLAY POSITION:** Position of the tip window.

A small blue window appears on the screen. Use arrow key to move it, and then press [Enter] to specify the position.

**SCAN DURATION:** Duration for scanning one port.

Options are 3 seconds, 5 seconds, 10 seconds, 15 seconds, 20 seconds, 30 seconds, 40 seconds, 60 seconds. Move the highlight bar to an option and press [Enter] to select it.

**OSD ACTIVATING HOTKEY:** Select OSD activating hotkey.

- ◆ [Ctrl] [Ctrl] Set hotkey as [Ctrl] [Ctrl].
- ◆ [Scroll] [Scroll] Set hotkey as [Scroll] [Scroll].
- ◆ [Shift] [Shift] Set hotkey as [Shift] [Shift].
- ◆ [Alt] [Alt] Set hotkey as [Alt] [Alt].

Move the highlight bar to an option and press [Enter] to select it.

**SET PASSWORD:** Set new password.

First enter old password, then enter new password and confirm it. The new password is set. If error occurs, the screen will remind users.

**CLEAR THE NAME LIST:** Clear the names of port list.

You need to enter password to clear the names of port list.

**RESTORE DEFAULT VALUE:** Restore settings to default value.

You need to enter password to Restore settings to default value.

Note: The user password will also be cleared, and the factory password will not.

**LOCK CONSOLE:** Lock the console.

You cannot switch or scan after you lock the console (including switch by push button on the panel or OSD). You need to enter password to set.

Note: After Locking the console, you can also unlock the console by this option. It also needs password verification.

## TROUBLESHOOTING

Symptom	Possible Cause	Action
Keyboard and/or mouse not responding.	No connection to the computer.	Check the cable from the switch to the computer to make sure it is properly connected.
	KVM switch needs to be reset.	Press reset button on the rear panel.
OSD menu no display.	Power supply problem.	Plug power adapter to supply enough power.

## SPECIFICATION

Type		DS-23100-1	DS-23200-1	DS-23300-1
<b>Computer connections</b>		4	8	16
<b>CPU port selection</b>		Front panel switches/OSD menu		
<b>Console connectors</b>	Keyboard	1 x USB Female		
	Mouse	1 x USB Female		
	Video	1 x HDB-15 female (blue)		
<b>CPU connectors</b>	Keyboard	1 x PS/2 female (purple), 1 x USB female		
	Mouse	1 x PS/2 female (green), 1 x USB female		
	Video	4 x HDB-15 male (blue)	8 x HDB-15 male (blue)	16 x HDB-15 male (blue)
<b>LEDs</b>	On Line	4	8	16
	Selected	4	8	16
<b>Video resolution</b>		1280x1024		
<b>Power</b>		DC9V, 1A		
<b>Operating temperature</b>		-10°C~50°C		
<b>Storage temperature</b>		-20°C~60°C		
<b>Housing</b>		Metal		
<b>Weight</b>		0.8 Kg		
<b>Dimensions (L x W x H )</b>		432 x 155 x 44 mm		

## SAFE GUIDE

- ◆ Please follow the directions below when installing, using and maintaining it in order to guarantee the device to work well
- ◆ When installing and operating the device, please make sure proper power supply first, and then do other operations after it is initialized
- ◆ As signal and power transfer need custom cable, please use matched cable, unmatched cable may cause system work improperly or even damage the device
- ◆ Keep airy during operating to prevent high temperature
- ◆ Keep the device away from working long in wet environment to prevent short circuit
- ◆ Please do not open the device without permission of professionals

Hereby Assmann Electronic GmbH, declares that the Declaration of Conformity is part of the shipping content. If the Declaration of Conformity is missing, you can request it by post under the below mentioned manufacturer address.

**www.assmann.com**  
 Assmann Electronic GmbH  
 Auf dem Schüffel 3  
 58513 Lüdenscheid  
 Germany

