



Fiber Optic Wall Mounting Splice Boxes



✓ Compact wall mount enclosure

✓ Lockable

✓ Sturdy, cold rolled steel material

✓ Various adapter plates available

Abstract

Wall mounting splice boxes and suitable adapter plates for fiber optic couplers

Features

- Cable input or output on the top and bottom side with foam rubber strips
- Lockable (incl. 2x keys)
- Integrated mounting fixtures for cable ties
- Mounting material included (4x dowels, screws, washers, cable ties)
- Safety class IP20
- Coloring with powder coating in grey (RAL 7035)

Product Overview

The fiber optic Unibox is a sturdy and compact splice box for wall mounting. With separately available coupling brackets that can be mounted in seconds, the box can be equipped with couplings, fiber pigtails and cables depending on specific needs. Areas of application include Indoor telecommunications and data communication applications.

Product Number Information - Unibox

Item code	Max. fiber	Max. splice cassettes
DN-96800S-2	24	-
DN-96800M-2	48	4
DN-96800L-2	192	5

Product Number Information - Adapter Plates

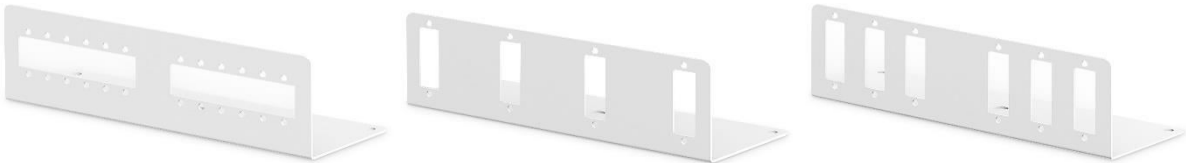
Item code	Suitable for Unibox model	Suitable for coupler type
DN-96801S-2	DN-96800S-2	12 x SC-SX / LC-DX / E2000-SX
DN-96802S-2	DN-96800S-2	4 x SC-DX / LC-QD
DN-96803S-2	DN-96800S-2	6 x SC-DX / LC-QD
DN-96801M-2	DN-96800M-2	24 x SC-SX / LC-DX / E2000-SX
DN-96802M-2	DN-96800M-2	12 x SC-DX / LC-QD
DN-96801L-2	DN-96800L-2	48 x SC-SX / LC-DX / E2000-SX
DN-96802L-2	DN-96800L-2	48 x SC-DX / LC-QD
DN-96803L-2	DN-96800L-2	24 x SC-DX / LC-QD

Logistic Data

Item code	Product dimensions (H x W x D) in mm	Packaging dimensions (H x W x D) in mm	Weight (net / gross) in kg
DN-96800S-2	265 x 150 x 55 mm	365 x 250 x 155 mm	1,3 kg / 1,4 kg
DN-96800M-2	280 x 320 x 54 mm	380 x 420 x 154 mm	2,0 kg / 2,1 kg
DN-96800L-2	445 x 445 x 95 mm	545 x 545 x 195 mm	5,2 kg / 5,3 kg
DN-96801S-2	40 x 145 x 50 mm	45 x 150 x 55 mm	0,093 kg / 0,095 kg
DN-96802S-2			
DN-96803S-2			
DN-96801M-2	45 x 275 x 15 mm	50 x 280 x 20 mm	0,16 kg / 0,17 kg
DN-96802M-2			
DN-96801L-2	90 x 435 x 10 mm	95 x 440 x 15 mm	0,24 kg / 0,26 kg
DN-96802L-2			
DN-96803L-2			

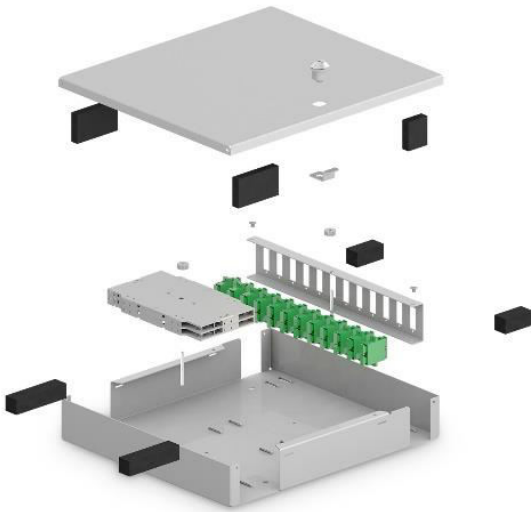
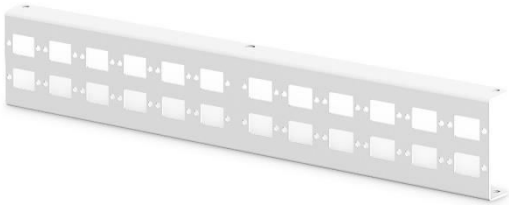
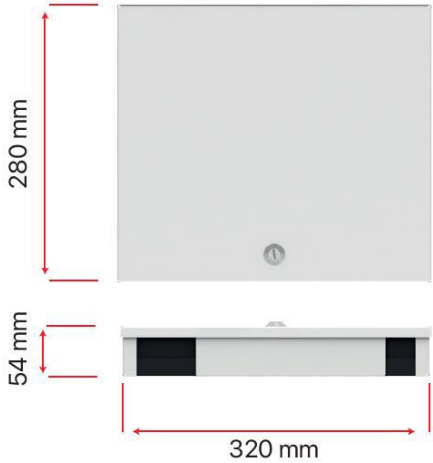
Product Images

DN-96800S-2 / DN-96801S-2 / DN-96802S-2 / DN-96803S-2





DN-96800M-2 / DN-96801M-2 / DN-96802M-2





DN-96800L-2 / DN-96801L-2 / DN-96802L-2 / DN-96803L-2

