



Gigabit Ethernet PoE+ injector, 802.3at, 30 W



Quick Installation Guide

DN-95103-3

1. Introduction

The PoE injector is the ideal solution for expanding your network in locations without a power connection. Fully compatible with the IEEE 802.3af/at standards, it is perfect for power supply and data transmission for PoE-capable devices such as access points (AP), IP cameras, IP telephones or PoE receivers.

Thanks to its powerful features, the PoE injector ensures a stable and reliable connection without the need for additional configurations. An elegant design and robust protection mechanisms make it the first choice for demanding applications.

2. Features

1. **Compatibility:** Supports IEEE802.3af/at standards, ideal for all compatible PoE devices
2. **High performance:** Delivers up to 30W of power and supports gigabit data transmission
3. **Simple installation:** Plug-and-play operation without configuration effort
4. **Range:** Power and data transmission up to 100 m possible
5. **Intelligent protection mechanisms:** Short-circuit protection and overload protection ensure a safe power supply
6. **Robust design:** Durable plastic housing that combines elegance with functionality
7. **Energy efficiency:** Automatic detection of connected devices for optimum power supply

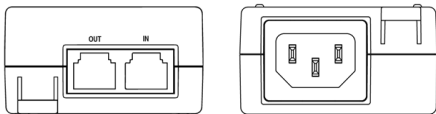
3. Package Contents

- PoE injector
- Quick installation guide
- Mains cable

4. Specifications

| | |
|--------------------|--|
| Connections | OUT: 1x 10/100/1000Mbps RJ45, IN: 1x 10/100/1000Mbps RJ45 |
| PSE Power on RJ-45 | Mode A: 1/2(+),3/6(-) |
| PoE standard | IEEE802.3af/at |
| Network cable | 10BASE-T: UTP category 3, 5 (up to 100m), 100BASE-TX: UTP category 5, 5e (up to 100m), 1000BASE-T: UTP category 5e, 6 (up to 100m) |
| PoE power | Up to 30W |
| Input voltage | AC 100-240V 50/60Hz 0.6A max |
| LED display | PoE status (green) |
| Dimensions | 142 x 60 x 32 mm |
| Temperature | Operating Temperature: 0°C ~ 40 °C Storage Temperature: -40 °C ~ 70 °C |
| Humidity | Operating Humidity: 10% ~ 90% non-condensing Storage Humidity: 5% ~ 90% non-condensing |

5. Hardware Description



PoE OUT:

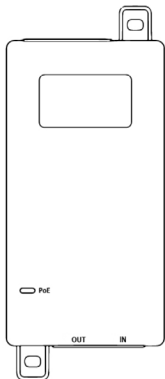
This port is an RJ-45 Ethernet connector where data is received and transmitted through the PoE Injector and provides PoE power along with the Ethernet data to a PoE device.

Data IN:

This port is an RJ-45 Ethernet connector where data is received and transmitted through the PoE Injector.

AC Power Input Connector:

This connector connects the AC power source to the PoE Injector.

LED indicator

| LED | Color | Function |
|-----|-------|--|
| PoE | Green | Off: No PoE supply. Light: Indicates the machine has PoE supply |

6. Installation

This part describes how to install your machine and make connections to it. Please follow the following instructions to avoid incorrect installation causing device damage and security threat.

- Before cleaning the machine, unplug the power plug of the machine first. Do not clean the machine with wet cloth or liquid.
- Do not place the machine near water or any damp area. Prevent water or moisture from entering the machine chassis.
- Do not place the machine on an unstable case or desk. The machine might be damaged severely in case of a fall.

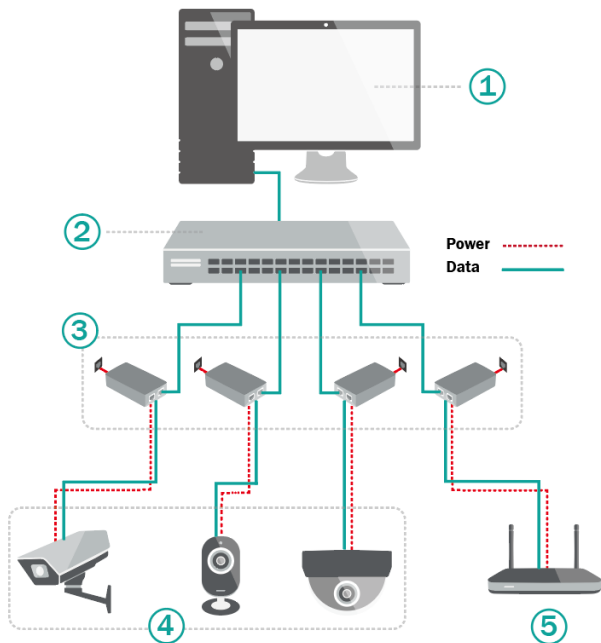
- Ensure proper ventilation of the equipment room and keep the ventilation vents of the machine free of obstruction.
- Make sure that the operating voltage is the same one labeled on the machine.
- Do not open the chassis while the switch is operating or when electrical hazards are present to avoid electrical shocks.

Power on

The machine can be used with AC power supply. Powering on the machine, it will automatically initialize, and its LED indicators will respond as follows:

Then, the data LED indicators will flash momentarily for one second, which represents a resetting of the system.

7. Application Diagram



| | | | |
|---|--------------|---|--------------|
| 1 | Monitor | 4 | PoE Camera |
| 2 | Switch | 5 | PoE Wireless |
| 3 | PoE injector | | |

Hereby Assmann Electronic GmbH, declares that the Declaration of Conformity is part of the shipping content. If the Declaration of Conformity is missing, you can request it by post under the below mentioned manufacturer address.

info@assmann.com

Assmann Electronic GmbH

Auf dem Schüffel 3

58513 Lüdenscheid

Germany

