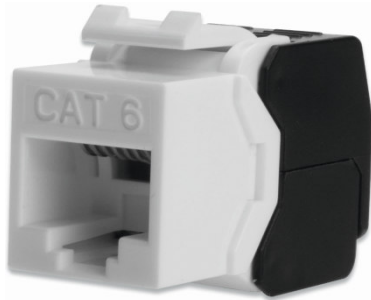


## DIGITUS® CAT 6, Class E Keystone Module, unshielded



✓ Category 6, ClassE

✓ Unshielded

✓ RJ45 jack

✓ Cable entry: Rear side

### Abstract

DIGITUS® CAT 6, Class E Keystone Module, unshielded, toolfree installation

### Features

- Cable entry: Rear side
- Material housing: Abs halogen free, UL 94 V0
- Contacts: Phosphor, bronze
- Coating of contacts: Nickel, gold plated
- Operating temperature: -10 °C bis +50 °C
- Material circuit board: FR4, 1.2 mm
- Mating cycles: ≥ 750
- RJ45 outlet for mounting in Patch Panel
- IDC contacts: Phosphor, bronze
- Layer: 50 µm gold over 40 µm nickel
- Cable connection type: Tool free with cable hatch for strong/flexible conductions AWG 23-26
- Wiring standard: EIA/TIA 568 A/B
- Conformity: Category 6 / 1GBase-T Channel, ANSI/EIA/TIA 568C.2.1:2002, ISO/IEC 11801:2002
- Dimensions: 35x25x17 mm
- Weight: ca. 12 g
- Compact design allows the installation of 24 pieces in a row of 483 mm (19") 1U Panels
- Opening dimensions according to Keystone standard 19.35x14.8 mm

### Product Overview

The Item "DN-93603" from DIGITUS® is an unshielded Keystone Module with tool free installation which provides best performance and link quality for your network. The compact design allows the installation of 24 pieces in a row of 483 mm (19") 1U Panels It is conform to Category 6 / 1GBase-T Channel, ANSI/EIA/TIA 568C.2.1:2002, ISO/IEC 11801:2002 and certificated by GHMT.

### Product Number Information

DN-93603      DIGITUS® CAT 6 Keystone Module, unshielded, RJ45 to LSA, toolfree installation, incl. cable tie

### Product Images



### Technical Drawings

