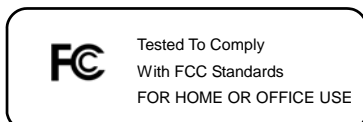




# WIRELESS USB 2.0 ADAPTER

## Quick Installation Guide

(DN-7043-4 & DN-7053-2)



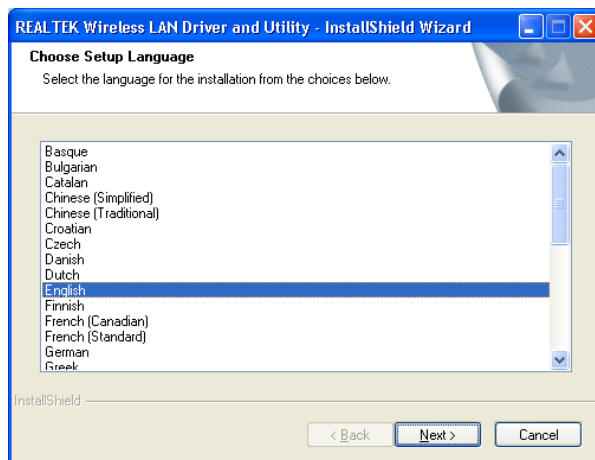
## 1. BOX CONTENTS

- ◆ Wireless LAN Adapter
- ◆ Quick Installation Guide
- ◆ Driver CD

## 2. INSTALL DRIVER/UTILITY

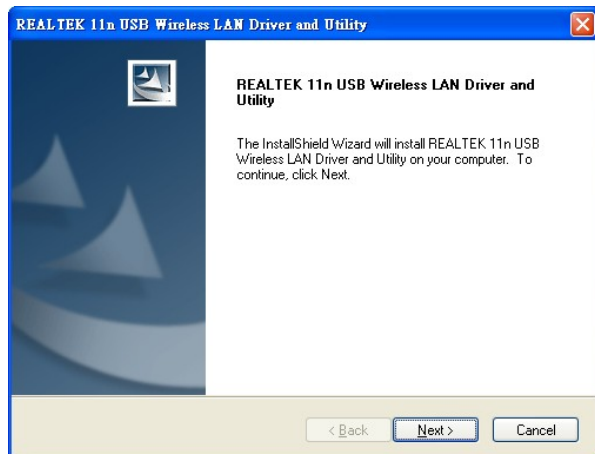
### Step 1 :

Insert the installation CD into your CD-ROM. Choose the Setup Language and click **Next** button.

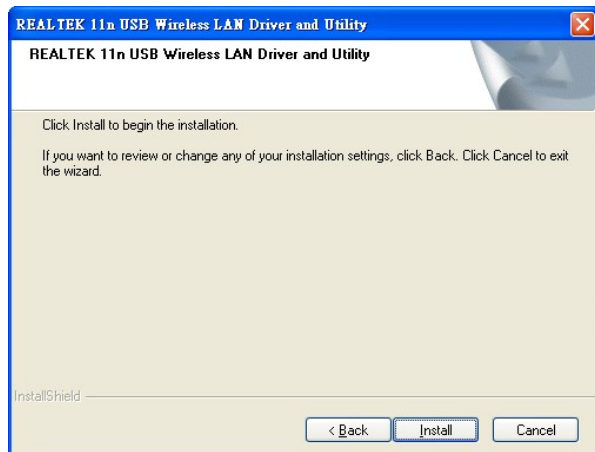


### Step 2 :

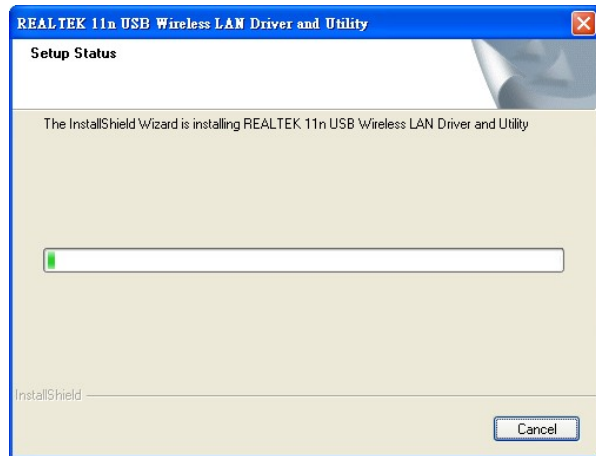
Installation descriptions shown. Click **Next** to continue.



Click **Install** to begin the installation



Installing & configuring wlan utility



Installing Drivers.



**Step 3 :**

Click **Finish** to complete installation

