



# Bluetooth 5.1 Nano USB Adapter



## Quick Installation Guide

### DN-30211 Rev.2

With the DIGITUS® Bluetooth USB Adapter, you can use the fast Bluetooth 5.1 standard with high transmission rates of up to 3 Mbps. This allows you to transmit files, images or music quickly and in high quality. The adapter can be used for mobile devices, for connections between computers, for connecting Bluetooth accessories of all kinds and is supported by the most common gaming consoles. These include controllers, headphones, speakers, keyboards, mouses, printers, tablets or smartphones. It is also possible to use dual mode, LAN function, printer control and the serial port function (SPP). The range of the Bluetooth dongle is between 10 and 20 meters depending on the on-site conditions. The BLE function ensures that the power consumption is always adapted to the capacity that is currently required.

## Product Specification

### 1. Basic specifications and parameters

Product name:	Bluetooth 5.1 Dongle
Model:	DN-30211
Dimension:	23mm (L) x 14mm (W) x 5mm (H)
Chip:	BR8651A01
Weight (NW):	1.08g
BT Version:	Bluetooth V5.1
Frequency range:	2.4GHz (2400-2484MHz)
Transmission power:	Bluetooth: EIRP: 2.84dBm Maximum Bluetooth: BLE: EIRP: 2.53dBm Maximum
Software version:	V2.2
Hardware version:	V3.1
Transmission distance:	10M-20M
Rated Voltage:	DC 5V
Interface type:	USB
Transmission rate:	3.0Mbps (nova5 Pro TEST 110KB/s)
Operating system:	XP / Win 7 / Win 8 / Win 10 / 11 / Linux
Temperature:	0°C~70°C
Humidity:	40%~60%
Features:	<ol style="list-style-type: none"><li>1. Small size, powerful function: wireless listening to music, file sharing (not supporting IOS mobile phone)</li><li>2. Powerful function (dual mode, low power consumption, high audio quality,</li></ol>

supporting more than 3 Bluetooth devices,  
supporting Bluetooth service sharing)

3. Comply with Bluetooth 5.1, distance 10-20m

## 2. Support services

Bluetooth LAN (PAN)

Bluetooth high quality audio (A2DP, HFP)

Bluetooth image transfer function (BIP)

Serial port function (SPP)

Bluetooth printing service (HCRP)

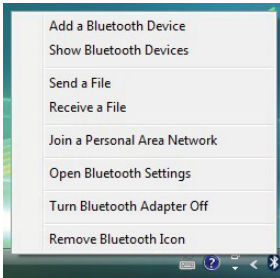
Bluetooth file transfer service (FTP)

Bluetooth information exchange service (OPP)

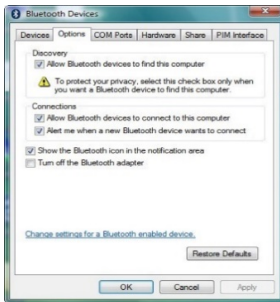
Bluetooth dial up service (DUN) .....

(chip supported protocols:

GAP, HFP, HSP, PBAP, A2DP, AVRCP, FTP, OPP, MAP, HID, DUN,  
PAN, GATT, IAP2, ANCS, SPP, BT5.0 And downward compatible)



## 3. Application scope



- Wireless communication between mobile phones and hands-free devices was also the first popular application
- Wireless network between computers within a specific distance
- Wireless connection between computer and peripheral devices, such as Bluetooth keyboard, mouse, headset, printer, etc

- File transfer between Bluetooth devices
- Wireless traditional wired equipment, such as: medical equipment, GPS, barcode scanner, traffic control equipment
- Wireless bridge between several Ethernet Networks
- 7 generations of home game console handle, PS3, PSP go, Nintendo Wii ipega9017 ipega9017s ipega9025 Bluetooth game handle
- With Bluetooth support, PC or PDA can realize dial-up Internet access through the modem of mobile phone
- The real-time positioning system (RTLS) uses the "node" or "tag" embedded in the tracked object, and the "reader" receives and processes the wireless signal from the tag to determine the location of the object

## 4. Operation Instruction:

1. Plug and play version, no needs to install the driver

**Note:**

**(1) Most laptops have their own Bluetooth function, as shown in the figure, before plug the BT adaptor into any devices with own Bluetooth function, user needs to disable your own Bluetooth in the device manager, and then re insert a new Bluetooth adapter.**

**(2) IOS system mobile phone does not support file transfer.**

2. Once the USB adaptor is plugged you will see a Bluetooth icon on the task bar at the bottom right of the screen. If you click on it (both right and left click work the same way), you will get a list of options.

If you do not have a Bluetooth icon, open up **Control Panel** ->

**Hardware & Sound** -> **Setup a Bluetooth enabled device**. Go to the

**Options** Tab and check the final box on the page – **Show the Bluetooth icon in the notification area**

**Note: For More detail information and support, please visit our website [www.assmann.com](http://www.assmann.com)**

Frequency range: 2.4GHz (2400-2484MHz)

Transmission power: Bluetooth: EIRP: 3.15 dBm Maximum  
Bluetooth BLE: EIRP: 1,86 dBm Maximum

Software version: 202107241135-B

Hardware version: V 1.0

Hereby Assmann Electronic GmbH, declares that the Declaration of Conformity is part of the shipping content. If the Declaration of Conformity is missing, you can request it by post under the below mentioned manufacturer address.

[www.assmann.com](http://www.assmann.com)  
Assmann Electronic GmbH  
Auf dem Schüffel 3  
58513 Lüdenscheid  
Germany

