



# **SNMP & WEB CARD FOR DIGITUS ONLINE UPS SYSTEMS**

## **Quick Installation Guide**

DN-170100-1

For

DN-170093-96 / DN-170106-07 /

DN-170130-32

## **1. Overview**

Digitus SNMP card supports SNMPv1/v2 and v3 protocols, features e-mail alarm, historical events, and historical data storage.

## **2. Functions**

- Support multiple operating systems (Windows, Mac, Linux)
- UPS can be monitored remotely through the network
- Can realize web-based user interface
- Support email alarm;
- Multi-user permission management
- Support DHCP
- Support remote self-testing, shutdown, and restart UPS functions (UPS support required)
- Support scheduled tasks (timed self-test, power on/off)
- Historical events and historical data storage functions
- Remote UPS monitoring and management can be performed through HTTP, SNMP, Modbus TCP/IP
- Complete equipment event handling (including event recording and notification)

### **3. Features**

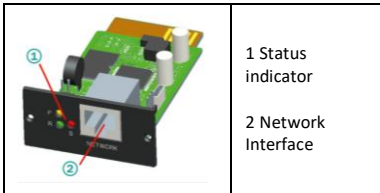
1. Networking methods: IP-based local area network
2. User permission management, safe, confidential, and reliable
3. Support Web page configuration
4. Support scheduled task function, allow setting scheduled UPS on/off, scheduled battery discharge, etc.
5. Support storage of 50, 000 historical data and 5, 0000 historical event records
6. Built-in ultra-long-life system clock, support automatic timing to achieve time synchronization
7. Support SNMP V1/V2/V3, HTTP, Modbus TCP/IP network protocols
8. Support IPV6

### **4. Package Content**

- Digitus SNMP Card
- Quick Installation Guide

## 5. Network Interface

10/100M RJ45 Ethernet interface, used to connect to the switch



### 5.1 Definition of Indicator Lights

- Power indicator yellow (Power), always on
- Status indicator red (Status), off when normal, always on when an alarm or fault is generated
- Run indicator green (Run), flashing when the program is running normally

### 5.2 Installation & Connection

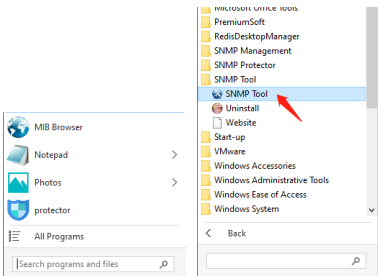
- Insert the SNMP card into UPS intelligent slot
- Connect the SNMP card to computer with network cable

## 6. SNMP-Tool Installation & Usage

Download installation files from

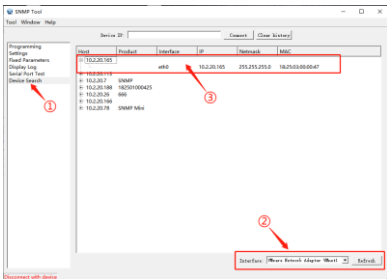
<https://de.assmann.shop/en/IT-Infrastructure/Uninterruptible-Power-Supply-UPS/UPS-Accessories/SNMP-WEB-Card-for-DIGITUS-OnLine-UPS-Units.html>

and execute “SNMP\_Tool” to start installation of software. Users can find the icon of software in “Start menu--All Programs--SNMP\_Tool” after installation.



## Device IP address searching: Search the IP address of SNMP card by installed “SNMP-Tool”

1. Click “Device Search”
2. Choose current network port and click “Refresh” to query the SNMP card IP in the LAN.



## 7. Web Login

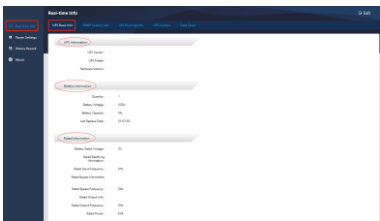
Enter the IP address in the browser to log in to the SNMP monitoring system.

**Note:** Before login, modify the PC IP address and ensure that the PC IP address and SNMP card IP address are in the same network segment.

**Default account: admin**  
**Default password: admin**



After a successful login, the main page will appear as follows, and you can click the menu on the left side to configure the corresponding functions.



**Note:** For more details, see the User Manual on the webshop:

<https://de.assmann.shop/en/IT-Infrastructure/Uninterruptible-Power-Supply-UPS/UPS-Accessories/SNMP-WEB-Card-for-DIGITUS-OnLine-UPS-Units.html>

Hereby Assmann Electronic GmbH declares that the Declaration of Conformity is part of the shipping content. If the Declaration of Conformity is missing, you can request it by post under the below mentioned manufacturer address.

**info@assmann.com**

Assmann Electronic GmbH

Auf dem Schüffel 3

58513 Lüdenscheid

Germany

