

**DIGITUS<sup>®</sup>**

# **OnLine UPS system**

## **Datasheet**



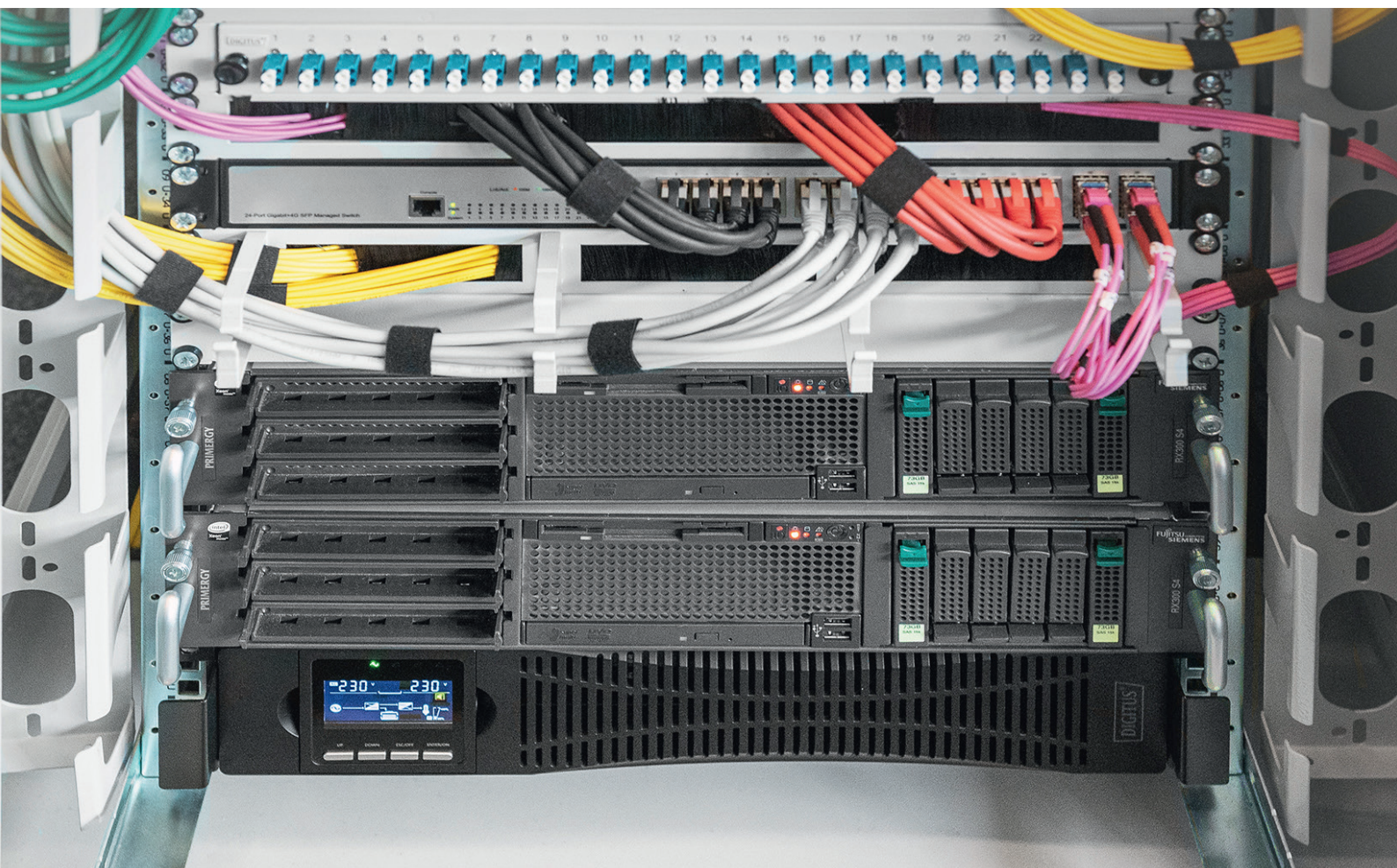
## Product description

The DIGITUS® OnLine UPS is a true double-conversion UPS solution that offers first-class **power failure protection and continuous power generation** in a compact 2 U housing. Switching to battery operation is uninterrupted. It protects consumers from all mains disturbances due to complete and partial power failures, voltage drops, overvoltages or frequency deviations.

The UPS can be operated as a 19" unit in a rack or also as a **tower solution**. The single-phase UPS offers high energy efficiency and is ideal for protecting critical infrastructure in both centralised and edge network applications.

**Expandable runtime options** with matching external battery modules provide additional flexibility when extended uninterruptible power supply is required.

The user-friendly **LCD display** and network management capability, including configuration, make this system easy to install and maintain.



## Benefits

- **High power factor (1.0)**, a higher effective power allows more connected loads, this saves space in the rack and reduces costs.
- **High efficiency** in online mode, a higher efficiency level means optimised energy management and lower heat dissipation, resulting in energy savings and improved reliability.
- **User-friendly LCD screen** provides UPS status insight for easy installation, configuration and operation.
- **Compact rack/tower design** optimises rack space and allows flexible installation.
- Minimal downtime of the unit due to **hot-swap capable**, user-replaceable battery modules, which can be replaced during operation.
- **External battery modules** allow the runtime to be the running time.
- With individually **controllable output sockets**, you can manage the power supply of individual devices without affecting the operation of other critical network devices.
- Various communication interfaces (RS232/ USB, parallel port, SNMP slot) enable **remote monitoring** of the system.
- **Automatic battery self-test** and fan speed control increase the service life of the components.
- The REPO (**Remote Emergency Power Off**) function switches off the UPS in case of an emergency. When an emergency occurs, the REPO switch turns off the rectifier and inverter and immediately stops power to the load. The UPS stops charging and discharging the battery.



## Technical features

- Online double conversion system (VFI-SS-111)
- Input: socket IEC60320 C14, 208/220/230/240 Vac
- Output: 8 x IEC60320 C13, max. 10A per socket
- System power rating: 1500 VA / 1500 W, power factor 1.0
- AC-AC (online VFI) efficiency: 93 %, ECO mode efficiency: 98 %.
- Replaceable internal battery pack during operation.
- Battery: valve-regulated, non-spillable lead-acid battery.
- Battery capacity: 3 x 12V x 9.0 Ah
- Full load run time: 4 min; half load run time: 12 min
- Charge: 4 hours to 90% capacity after fully discharged
- Network connection: Optional SNMP/Webcard (part number DN-170100) allows remote monitoring of the UPS
- Local communication ports: USB, RS-232 (serial), SNMP card (optional), relay card (optional)
- Emergency power-off (EPO) contact for UPS shutdown in case of emergency
- Maximum operating temperature: 0 - 40 °C
- Storage temperature: -25 - 55 °C
- Relative humidity: 20 - 90% non-condensing
- Operating altitude: < 1500 m
- Product dimensions WxDxH (mm): 440 (19“) x 460 x 86.5 (2U)
- Product weight: 15,5 kg
- Shipping dimensions WxDxH (mm): 555 x 595 x 202
- Shipping weight: 20,2 kg
- Safety standards: IEC/EN62040-1, IEC/EN60950-1
- EMC standards: IEC/EN62040-2, IEC61000-4-2, IEC61000-4-3, IEC61000-4-4, IEC61000-4-5, IEC61000-4-6, IEC61000-4-8
- Approval: CE declaration
- Scope of delivery: UPS unit, feet for tower installation, UPS manual, UPS QSG, UPS software license, USB cable, mains cable (1.8m protective contact socket (type 7/4) to IEC60320 socket C14), IEC C13 connection cable, 19“ installation brackets
- Installation: Desktop, Rack
- Plug: IEC 60320 C14 inlet
- Power: 1500VA – 3000VA
- Technology: Online double conversion
- Inch form factor (IEC 60297): 482.6 mm (19“)

## Scope of delivery

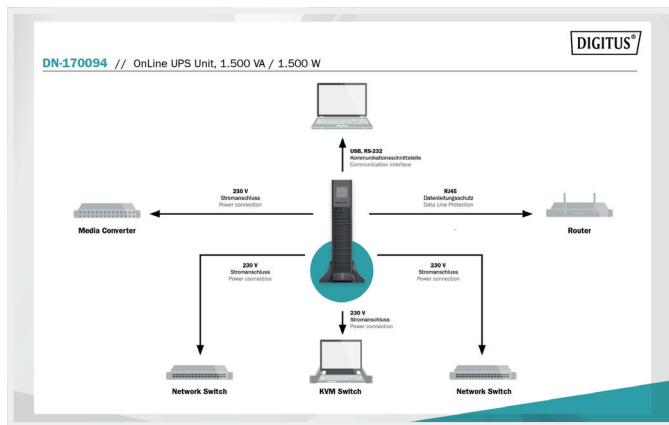
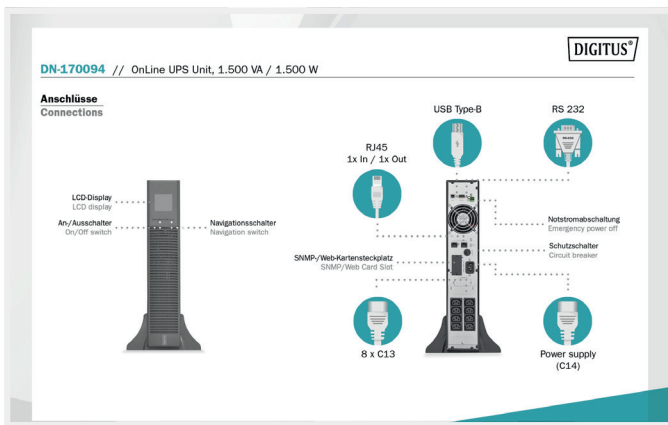
- 1 x OnLine UPS system, 1500 VA / 1500 W
- 1 x UPS user manual
- 1 x USB connection cable 1.2 m
- 1 x Mains cable 1.8 m
- 1 x RS232 cable
- UPS software license
- 19“ installation brackets
- Feet for tower installation

All information also in our online shop.



	DN-170093	DN-170094	DN-170095	DN-170096	DN-17106	DN-17107
<b>General</b>						
<b>Rated power (VA/W)</b>	1.000 / 1.000	1.500 / 1.500	2.000 / 2.000	3.000 / 3.000	6.000 / 6.000	10.000 / 10.000
<b>Input</b>						
<b>Rated voltage</b>	208, 220, 230, 240 Vac					
<b>Voltage range without battery operation</b>	110 Vac - 300 Vac (variable, depending on output load)					
<b>Frequency</b>	40-70 Hz; automatic recognition					
<b>Input connector</b>	IEC60320-C14	IEC60320-C14	IEC60320-C20	IEC60320-C20	Hardwired	Hardwired
<b>Output</b>						
<b>Outputs</b>	IEC60320-C13 x8				Hardwired	
<b>Output-voltage</b>	208/220/230/240Vac ±1%					
<b>Waveform</b>	pure sine wave					
<b>Overload (power mode)</b>	105-125% for 1min, 125-130% for 30s				105-110% for 10 min 110-130% for 1min >130% 200ms	
<b>Efficiency AC mode / ECO mode</b>	88% / 97%	92% / 97%	92% / 97%	92% / 97%	93,5% / 97%	
<b>Battery</b>						
<b>Type</b>	Sealed, maintenance-free, valve-regulated lead-acid battery					
<b>Running time 100% load</b>	1,5 Min		1,5 Min	1,5 Min		
<b>Running time 50% load</b>	9 Min		9 Min	9 Min		
<b>+ 1 external battery module 100% load</b>	12 Min		12 Min	12 Min	6 Min	2,5 Min
<b>+ 1 external battery module 50% load</b>	35 Min		35 Min	35 Min	15 Min	8 Min
<b>Typical Charging time</b>	4 hours recovery up to 90 % of capacity (internal batteries)					
<b>Charging current</b>	2 A	2 A	2 A	2 A	10 A	10 A
<b>Management and communication</b>						
<b>LCD user interface</b>	Yes					
<b>External interfaces</b>	USB, Serial, Emergency Power Off (EPO), Card slot (for optional SNMP / Relay card)					

	DN-170093	DN-170094	DN-170095	DN-170096	DN-17106	DN-17107
<b>Management Software</b>	Yes					
<b>Environment</b>						
<b>Operating temperature/ storage temperature</b>	0°C - 40°C / -25°C - 55°C					
<b>Air humidity</b>	20-90 % RH @ 0- 40°C (non-condensing)					
<b>Operating height</b>	1500 m					
<b>Standards</b>						
<b>Electrical safety</b>	EN 62040-1:2008+A1:2013					
<b>EMC</b>	EN 62040-2:2018, EN61000-3-2:2014, EN-61000-3-3:2013					
<b>Further guidelines</b>	WEEE und ROHS2 REACH					
<b>Accessories</b>						
<b>Battery modules</b>	DN-170120			DN-170108		
<b>Manual environment switch</b>	DN-170130			DN-170131		
<b>Relay card</b>	DN-170100					
<b>SNMP card</b>	DN-170105					
<b>Relay card</b>	DN-170109					





ASSMANN  
germany

[www.assmann.com](http://www.assmann.com)

DM - xxxxx

Mentioned brand names and logos are trademarks or registered trademarks of their respective owners. Design deviations from the illustrations, errors and technical changes are reserved. All information without guarantee. We assume no liability for printing errors. Delivery subject to change, only while stocks last. 04/2024

**ASSMANN Electronic GmbH**

Auf dem Schüffel 3, 58513 Lüdenscheid

Tel.: +49 (0)2351 554 0

[www.assmann.com](http://www.assmann.com)