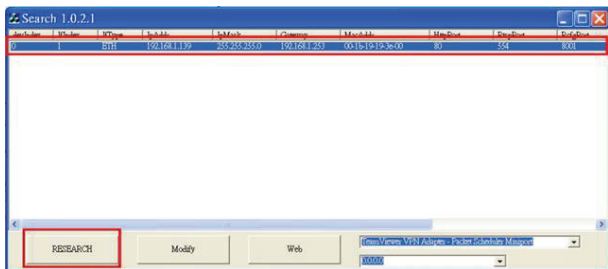


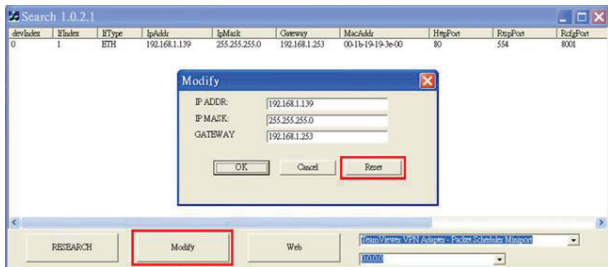


Reset the password

1. Take out the CD from the box and open the folder "Search Tool" on this CD.
2. Install the "WinPcap_4_1_2.exe" first and then execute "Search.exe" on the computer
3. Please make sure that the computer is in the same network domain as the camera
4. Press the "Research" button to find the IP address of that camera and click on that camera to high-light it in blue color.



5. Press on “Modify” and then press the “Preset” button. Please wait for 60 seconds or until the IP address pop up on the search utility after “reset”.



Now the password should be set back to “admin”.