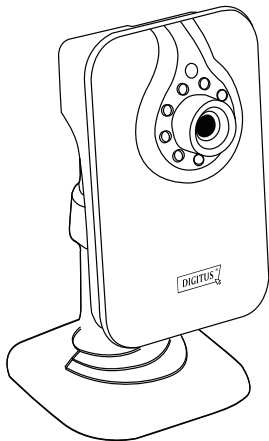




DIGITUS Plug&View OptiView



Quick Installation Guide
DN-16028

Introduction:

DIGITUS offers P2P Cloud service to avoid those complicated network setting for camera installation. All you need is just “Plug & View” with the following 3 simple steps completed within 1 minute.

Installation Procedures:

1. Power on the camera and connect the Ethernet cable from the camera to the router. (Figure 1) Please wait 20 seconds for the camera to start up.

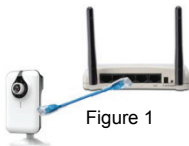


Figure 1

2. Download “DIGITUS Plug&View” APP from APP store or Google Play and execute this APP from your mobile devices and login the account and password (Figure 2).

Alternatively, you can also access the cameras via browsers from your Computer/Notebook by accessing: <http://www.mydigitus.net/>

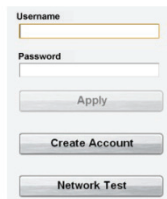
A light blue login form with a white background. It contains two input fields: 'Username' and 'Password'. Below the 'Password' field is an 'Apply' button. Below the 'Apply' button is a 'Create Account' button. At the bottom is a 'Network Test' button.

Figure 2

Note: If you don't have Google account, please create account and password first.


3. Add cameras under your account by scanning the QR code on the [last page](#) of this QIG using “DIGITUS Plug&View” APP from your mobile devices.

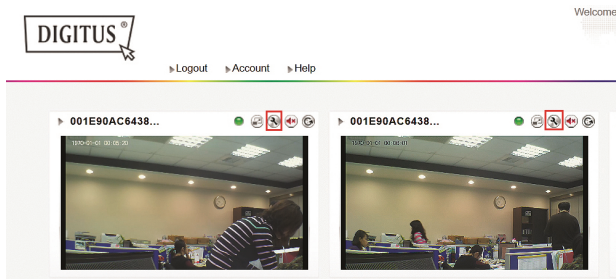
Alternatively, if using browser, you can key in the MAC address and Activation code manually as well.

After adding the camera, now you can have live-view anytime anywhere.

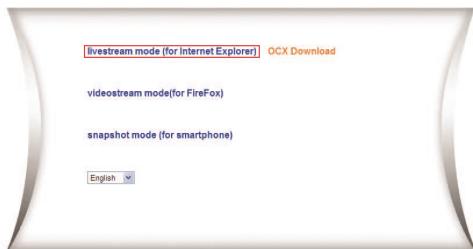
Installation Procedures (Wireless)

Wireless (WiFi) connection between IP camera and Wireless router / Access point is also available with the following procedures.

4. After completing Step 1 ~ 3 for wired connection with Ethernet cable, login into <http://www.mydigitus.net/>, and click the setting icon  to get into camera user interface.



Then you will enter the Web User Interface of the cameras. Please select livestream mode to enter. Please key in "admin" for the account and "admin" for the password to log in.



- Press “Tool bar” to enter the configuration page.



- Go to “Wireless Lan Settings” and select the wireless router / access point to connect to. Then enable “Using Wireless Lan” and key in the password. Press “Submit” to take effect of the new WiFi setting and close this camera user interface window.

Then unplug the Ethernet cable. Now you can access the camera wirelessly via Plug&View APP or through <http://mydigitus.net>

