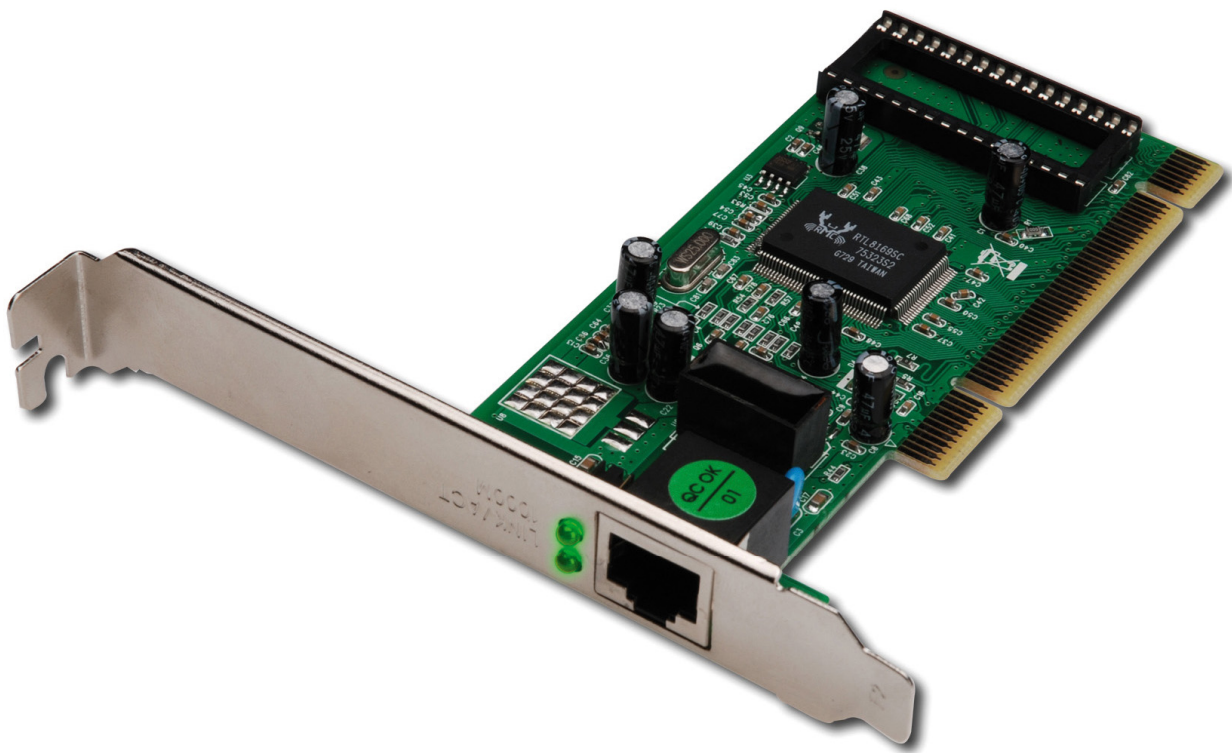




10/100/1000 MBPS NETWORK PCI ADAPTER



User Manual
DN-10110

Table of Contents

CHAPTER 1 INTRODUCTION	3
1.1 FEATURES.....	3
1.2 ENVIRONMENTAL.....	3
1.3 PACKAGE	4
CHAPTER 2 INSTALLATION	4
2.1 INSTALLING THE GIGABIT LAN CARD.....	4
2.2 SOFTWARE INSTALLATION.....	4

Chapter 1 Introduction

Congratulations on your purchase of this 10/100/1000Mbps Gigabit LAN Card DN-10110. The Value leader among Gigabit adapters for PCI Bus personal computers. Instructions for installing and configuring this product can be found in this manual. Before you install and use this product, please read this manual carefully for full exploiting the functions of this product.

The DN-10110 provides the bandwidth capability to support high-end servers and workstations. With Auto-negotiation, this card can run on three different speeds: 10Mbps at half and full duplex, 100Mbps at half and full duplex, and 1000Mbps at full duplex. When running at 1000Mbps, it provides a network throughput of 2Gbps in full-duplex mode.

1.1 Features

Designed for versatility and performance, the DN-10110 LAN Card provides the following:

- Operability in 32-bit,33/66MHz slot servers and workstations
- Compliance with IEEE802.3ab 1000BASE-T Gigabit Ethernet standards, IEEE802.3u Fast Ethernet standards
- Plug-and-Play installation
- Support PCI Revision 2.1,2.2,2.3
- Support half and full duplex at 10Mbps, half and full duplex at 100Mbps, and full duplex operation at 1000Mbps
- One build-in RJ45 connector
- Auto-Negotiation to the highest available speed
- Support up to 128Kbytes Boot ROM
- Support IEEE802.1P Layer 2 Priority Encoding
- Support Full Duplex flow control (IEEE 802.3x)
- Support IEEE 802.1Q VLAN tagging
- Support PCI Message Signaled Interrupt (MSI)
- Build-in FIFO buffers reduce overhead of memory transfers
- Support Microsoft NDIS5 Checksum Offload (IP, TCP, UDP) and large send offload
- Support Jumbo Frame transfers
- Two LED indicators: 10/100/1000M Link, 10/100/1000M Act
- Driver support for:
 - Microsoft Windows Series.
 - Linux
 - Novell Netware Series

1.2 Environmental

- Storage Temperature: -40oC ~70oC
- Operating Temperature : 0oC ~40oC
- Storage Humidity: 5% ~90% RH Non-condensing
- Operating Humidity: 10% ~90% RH Non-condensing

1.3 Package

- One DN-10110 Gigabit LAN Card
- Manual
- Drives and Manual on CD-ROM
- Low Profile Bracket
- GPL Licensing

Chapter 2 Installation

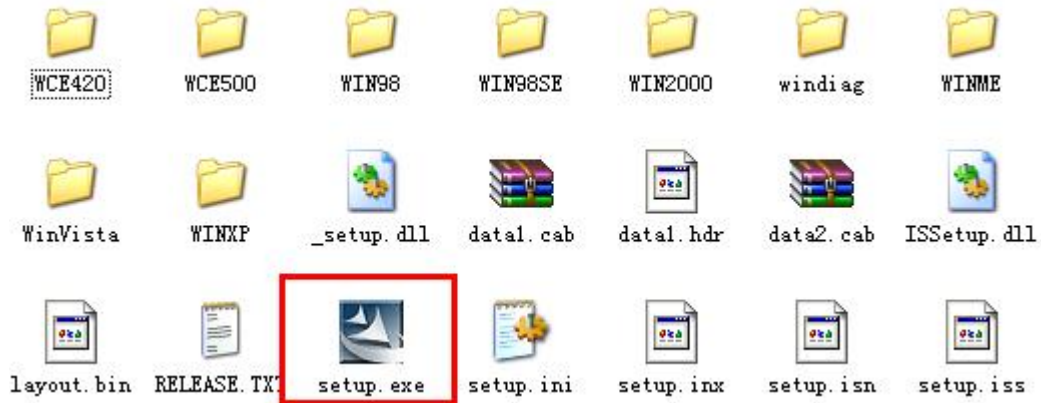
2.1 Installing the Gigabit LAN Card

1. Shut down the computer, unplug its power cord, and remove the chassis cover.
2. Insert the contact edge of the DN-10110 card into the connector of any available PCI Bus Master expansion slot.
Press the card firmly into the connector such that the card contacts are fully seated in the connectors
3. Install the bracket screw that secures the card to the computer chassis.
4. Replace the computer chassis cover.
5. Connect one end of a twisted-pair cable to your PC at the L8139SC card's RJ-45 port.
6. Plug the other end of the cable into one of your network's hub or switch ports, DSL modem, cable modem, router, etc.
(Category 5 and 5e link lengths are limited to 100 meters.)
7. Reconnect the computer power cord, and switch computer power on.
If the BIOS section of your computer boot program is Plug-and-Play compliant, then at power-up the BIOS will automatically configure any newly installed DN-10110 card.

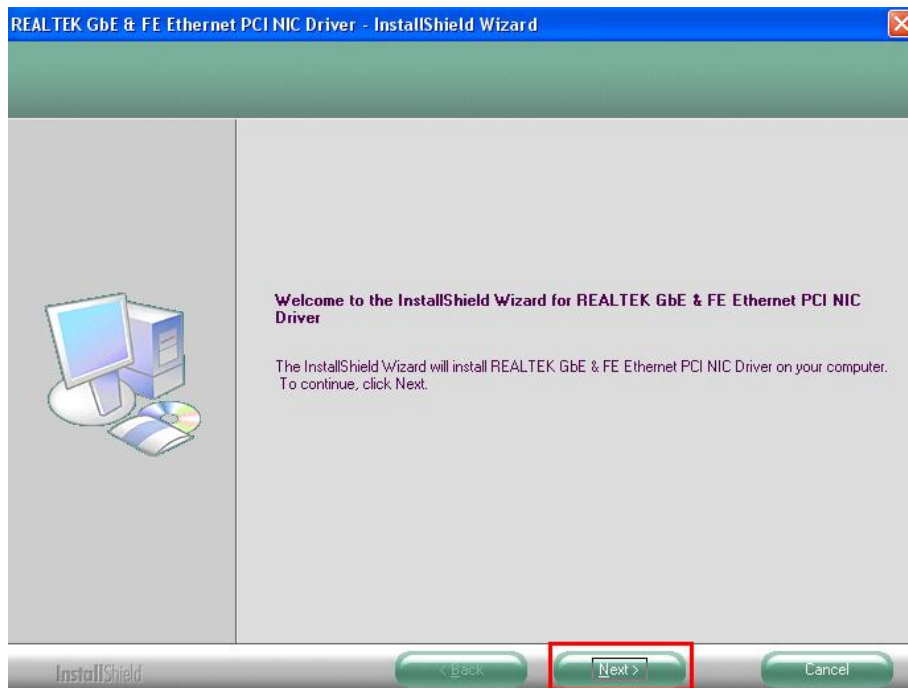
2.2 Software Installation

Step 1: Insert the CD (which u got with the gift box) into the CD-ROM and follow the steps which are shown below in the screen shot.

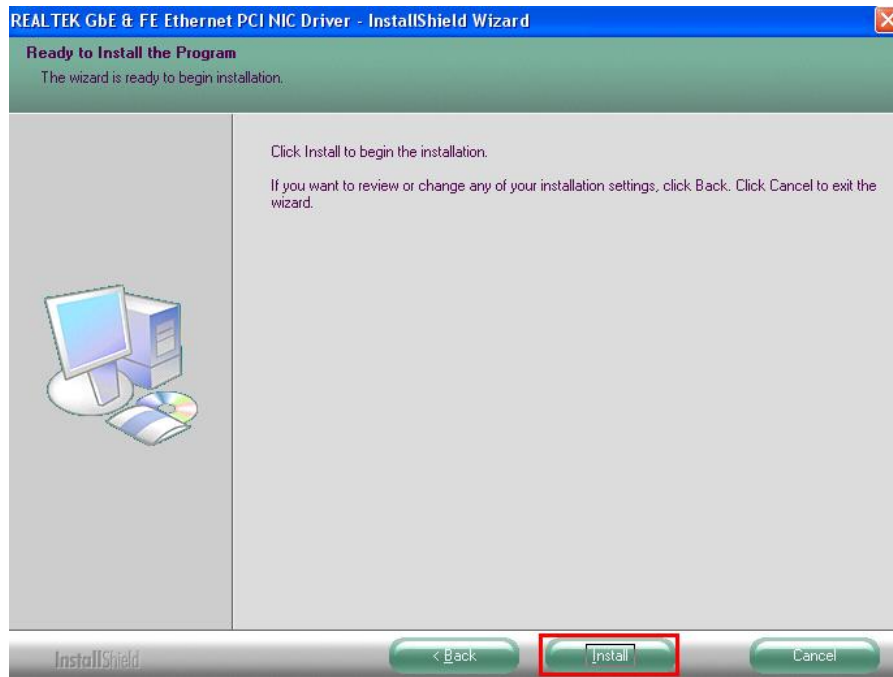
Step 2: Open your “**CD-ROM**” please open the “**Driver**” folder and double click “**Setup.exe**” file, the driver installation will start.



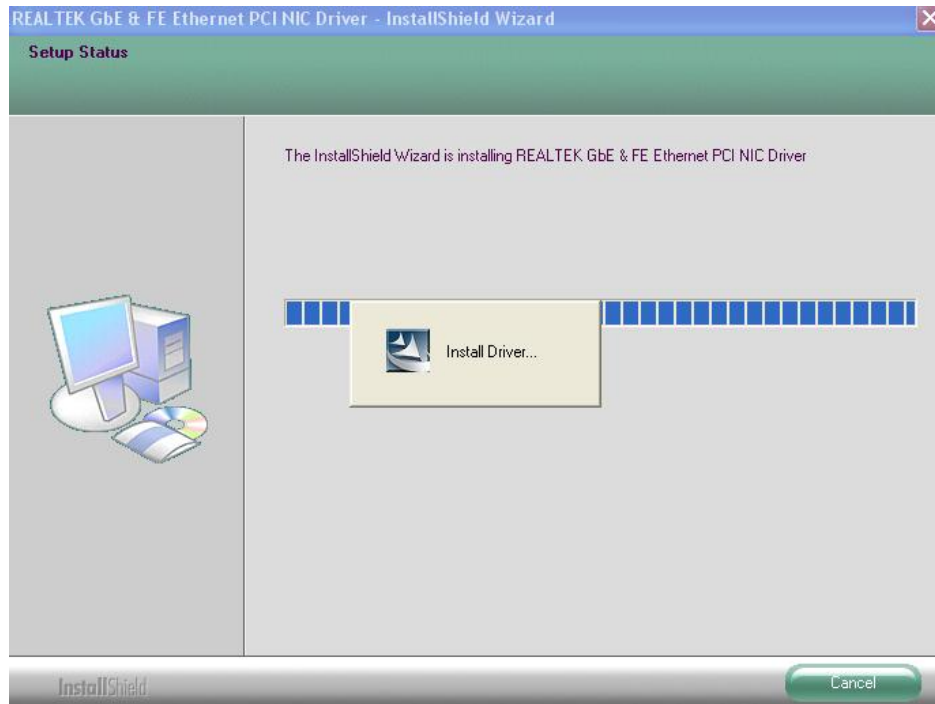
Step 3: Please click “**Next**” button to continue



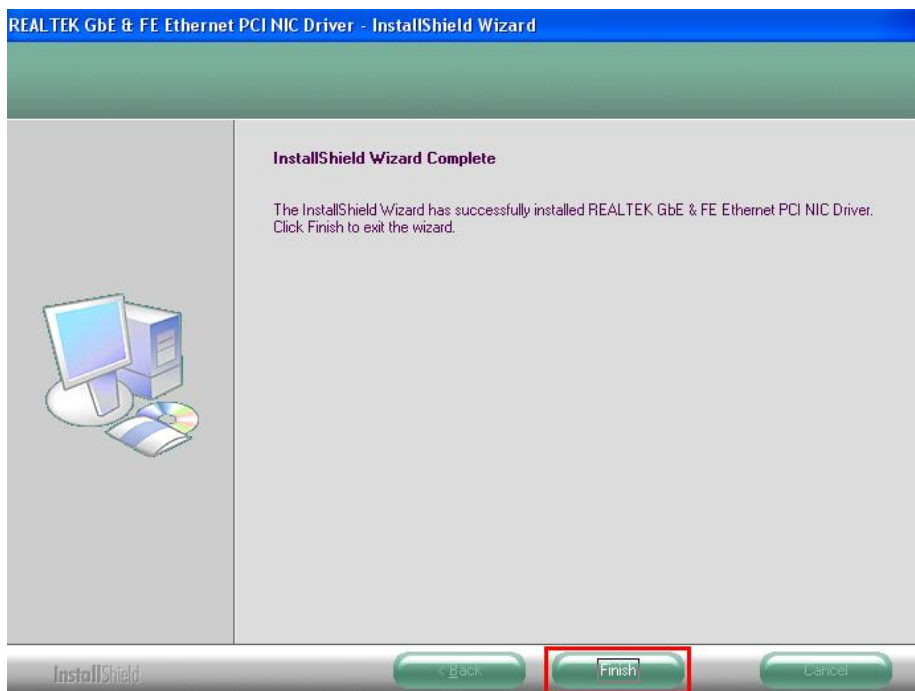
Step 4: Click **“Install”** button.



Step 5: Just wait for a moment. Windows will install the driver automatically



Step 6: The completing dialog box will appear, click “**Finish**” button.



After you've finished the above installation steps, you can plug your RJ45 cable into the LAN port. Then you can use your LAN card freely

You will enjoy the many advantages of joining a LAN card.

Hereby ASSMANN Electronic GmbH, declares that this device is in compliance with the requirements of Directive 2014/30/EU and the Directive 2011/65/EU for RoHS compliance. The complete declaration of conformity can be requested by post under the below mentioned manufacturer address.

Warning:

This device is a class B product. This equipment may cause some radio interference in living environment. In this case, the user can be requested to undertake appropriate measures to prevent interference.

www.assmann.com
Assmann Electronic GmbH
Auf dem Schüffel 3
58513 Lüdenscheid
Germany

