

Twisted Pair Patch Cable - Category 6_A Class E_A - U/UTP



- ✓ LSZH (Low Smoke Zero Halogen)
- ✓ Yellow colored plug for CAT 6_A
- ✓ Kink prot., strain relief, latch prot.
- ✓ various lengths and colors available

Abstract

CAT 6_A Class E_A, U/UTP, Twisted Pair Patch Cable, Cu, LSZH, AWG 26/7, various lengths and colors available

Features

- 2x RJ45 (8P8C) connectors
- Boots with kink protection, strain relief and latch protection
- Length marking on boot
- Conductor: Cu (Copper)
- Shielding: U/UTP (unshielded)
- Structure: 4x 2 AWG 26/7, twisted pair; incl. plastic cross separator
- Sheath: LSZH (Low Smoke Zero Halogen)
- PoE+ ready

Product Overview

The DIGITUS[®] Category 6_A Class E_A patch cables are manufactured and tested to the ISO/IEC 11801 and DIN EN 50173 Category 6_A specifications. They will guarantee the installed cabling system is compliant with the ISO & EN channel specification requirements and will provide optimum performance levels of DIGITUS[®] Category 6_A cabling. The performance is tested up to 500 MHz inclusive performance characteristics such as near end cross talk ("NEXT").

DIGITUS[®] patch cables are designed and produced to fulfill the highest requirements of various application areas in full volume.

Each cable is fitted with a molded boot which comes with kink protection and strain relief.

Furthermore the boot is equipped with a latch protection that prevents the latching lever against breaking.

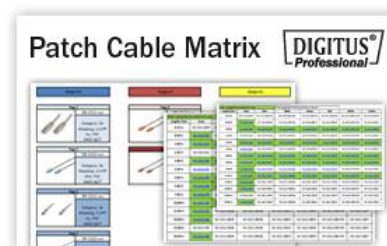
You can easily identify the Category 6_A, because of the transparent yellow colored connector.

Patch Cable Matrix and Configuration

Patch cables can be wide-ranging. Therefore we prepared a complete overview of our range, which guides you to the cable you require.

One E-Mail or one call will be enough and we will send you the latest version as a PDF file.

You can also check our Patch Cable Configuration tool on our website www.digitus-professional.com



Performance- and Specification Overview

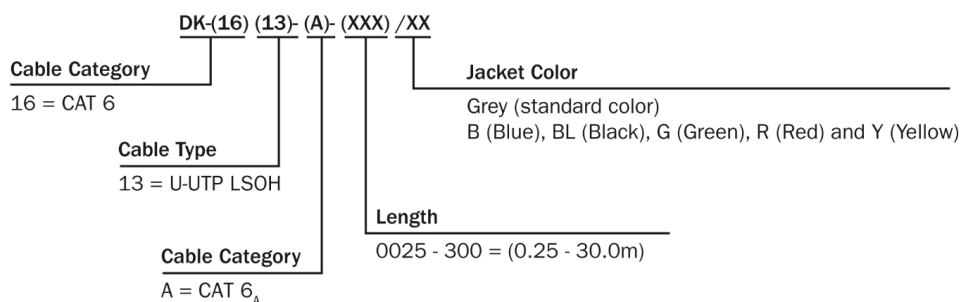
| | |
|------------------------|--|
| Conductor | Stranded AWG 26/7 bare copper, 0.151 ± 0.005 mm |
| Insulations | HD-PE (High Density Polyethylene) |
| Outer sheath | LSZH (Low Smoke Zero Halogen) |
| Overall diameter | 5.0 mm ± 0.30 mm |
| Bending radius | 8x OD |
| RJ45 connector | 3 μ nominal gold flash over 60 μ nickel undercoat contact pins |
| Color code | Orange x White, Green x White, Blue x White, Brown x White |
| Wiring standard | EIA/TIA 568B |
| Pin assignment | 1:1 |
| Durability | 750 insertion cycles |
| Contact resistance | 30 mΩ maximum |
| Resistance unbalance | 3% maximum |
| Dielectric strength | 2500 VDC for 3 seconds |
| Uninsulated resistance | 150 MΩ/km minimum |
| Operating temperature | -20 °C up to +60 ° |
| NVP | 68.2% |
| Flame retardancy | IEC 60332-1 |
| Smoke emission | IEC 61034 |
| Typical applications | IEEE 802.3: 10BASE-T; 100BASE-T; 1000BASE-T; 10GBASE-T |
| Norms | ISO/IEC 11801-1; EN-50173; ANSI/TIA 568-C; EN 60603-7-41 |
| Colors | Various colors available on request |
| Marking | Brand name, cable length and cable information |

Transmission Properties

| Freq. | Insertion Loss | NEXT | RL | ACR-F | PS NEXT | PS ACRF |
|--------|----------------|-------|-------|-------|---------|---------|
| MHz | dB | dB | dB | dB | dB | dB |
| 1.00 | 4.00 | 65.00 | 19.00 | 63.30 | 62.00 | 60.30 |
| 10.00 | 6.50 | 56.60 | 19.00 | 43.30 | 54.00 | 40.30 |
| 20.00 | 9.20 | 51.60 | 17.50 | 37.20 | 49.00 | 34.20 |
| 25.00 | 10.20 | 50.00 | 17.00 | 35.30 | 47.30 | 32.30 |
| 62.50 | 16.40 | 43.40 | 14.00 | 27.30 | 40.60 | 24.30 |
| 100.00 | 20.90 | 39.90 | 12.00 | 23.30 | 37.10 | 20.30 |
| 200.00 | 30.10 | 34.80 | 9.00 | 17.20 | 31.90 | 14.20 |
| 350.00 | 40.60 | 30.30 | 6.60 | 12.40 | 27.60 | 9.40 |
| 500.00 | 49.30 | 27.90 | 6.00 | 9.30 | 24.80 | 6.30 |

The results of the chart above are typical for Category 6_A, Class E_A patch cables 2 m, 5 m up to 10 m length

Product Number Information

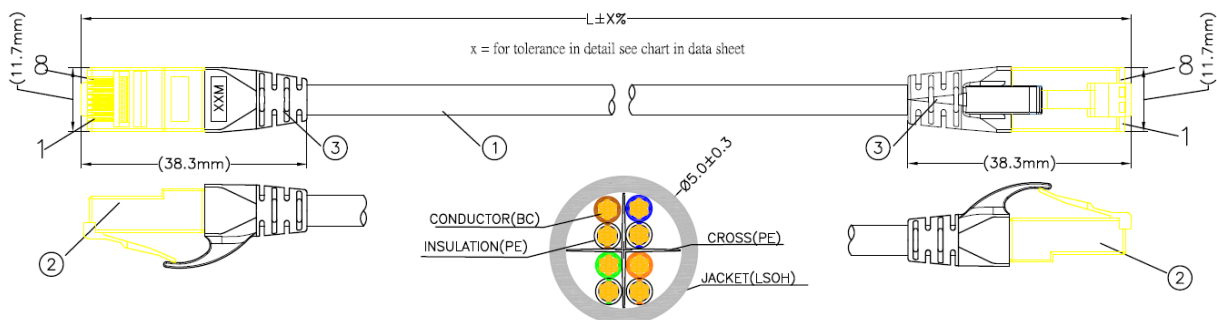


Length Tolerances

| Length (m) | Tolerance (mm) | Length (m) | Tolerance (mm) |
|------------|----------------|------------|----------------|
| 0.15 | +20/-6 | 8 | +/-155 |
| 0.25 | +20/-6 | 10 | +/-200 |
| 0.5 | +20/-10 | 12 | +/-250 |
| 0.75 | +20/-13 | 13 | +/-270 |
| 1 | +/-20 | 15 | +/-310 |
| 1.5 | +/-30 | 20 | +/-400 |
| 2 | +/-40 | 25 | +/-500 |
| 2.5 | +/-50 | 30 | +/-630 |
| 3 | +/-60 | 40 | +/-840 |
| 4 | +/-90 | 50 | +/-1000 |
| 5 | +/-110 | 70 | +/-1300 |
| 6 | +/-120 | 75 | +/-1500 |
| 7 | +/-140 | 100 | +/-1800 |
| 7.5 | +/-150 | | |

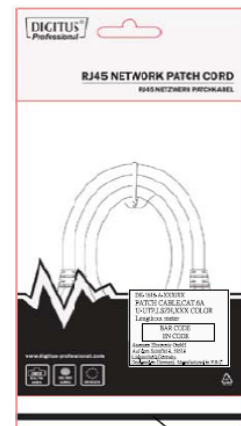
*The cable length is measured from plug A to plug B

Technical Drawing



MATERIAL LIST:

| NO. | PARTS NAME | SPECIFICATION DESCRIPTION |
|-----|----------------|--|
| ① | CABLE | U/UTP [26AWG(BC 7/0.151±0.005)*1PR]*4+PE CROSS +LSOH OD:5.0±0.3mm COLOR:Assorted upon request |
| ② | RJ45 CONNECTOR | RJ45,8P8C,TWO FORK GOLD PLATED CONTACTS YELLOW TRANSPARENT |
| ③ | MOLDING PVC | MOLDING PVC 45P COLOR:Assorted upon request |



Heat Seal