



2-port USB Cable KVM Switch with Audio



Manual

Version 22.0

Index

1. INTRODUCTION.....	2
1.1 FEATURES	2
1.2 PHYSICAL DIAGRAM.....	3
1.3 PACKAGE CONTENTS.....	3
2. SPECIFICATIONS.....	4
2.1 GENERAL.....	4
3. INSTALLING THE CABLE KVM SWITCH.....	5
3.1 SYSTEM REQUIREMENTS.....	5
3.2 HARDWARE INSTALLATION.....	5
3.3 NOTICE FOR SUN MICRO SYSTEM USER.....	6
3.4 HOT SWAPPABLE.....	6
3.5 DRIVER INSTALLATION(WINDOWS 98/SE ONLY).....	6
4. OPERATION.....	9
4.0 PUSH BUTTON.....	9
4.1 HOT-KEY OPERATION.....	9
4.2 PC SELECTION.....	9
4.3 AUTO-SCAN FUNCTION.....	10
4. 4 (PC+AUDIO) COMBINATION SELECTION.....	11
4.5 SINGLE AUDIO (SPEAKER) SELECTION.....	11

1. Introduction

Thank you for your purchase of the 2-port USB Cable KVM Switch with Audio! You now have a high quality, durable system that enables you to control two computers and/or servers from one console (USB Mouse, Keyboard, and Monitor). In addition, ~~proprietary new technology~~ allows you ~~to can independently~~ control and switch audio between two computers, ~~too~~.

1.1 Features

1. Controls 2 computers from a single console (Keyboard/Mouse) over USB connection.
2. Support Window 98SE/ME/2000/XP/Vista/2003 server, Mac , Linux
3. Allows sharing of audio devices.
4. Emulates a keyboard on each PC to allow your computers to boot normally without a keyboard error.
5. Supports hot-swap. All devices connected to the KVM can be added or removed at any time, without shutting the unit down.
6. Supports USB keyboard Hot-Key Switch and push buttons for easy operation.
7. Supports Auto-Scan function to alternate video between both computers in preset intervals.
8. Supports LED display for PC and audio status monitoring.
9. Supports VGA resolutions up to 2048x1536 @ 85HZ.
10. Supports Plug and Play.
11. Self powered through USB connection.
12. Provides innovative cable management system to prevent tangles.

1.2 Physical Diagram

PC connection 2 LED Indicators (Green)

PC connection 1 LED Indicators (Green)

PC 1 LED Indicators (Red)

PC 2 LED Indicators (Red)



USB Keyboard

VGA Output

USB Mouse

PC Selection Push Button

PC Selection Push Button

MIC Jack

Speaker Jack

- **PC LED Indicators:**
RED LED indicates that the 2-port USB Cable KVM Switch is switched to the corresponding PC.
- **PC connection LED Indicators:**
GREEN LED indicates the status of PC connection.

1.3 Package Contents

The product you purchased should contain the following equipment and accessories:

1. One 2-port USB Cable KVM Switch with Audio.
2. User Manual.

2. Specifications

2.1 General

Specification		
Number Of Computers Controlled	2	
Selection Method	USB Keyboard Hot Key only	
USB Versions supported	1.1	
LEDs	Red for PC Selection Green for PC ON-Line Selection	
PC Connectors	USB	2 x Type A USB Connectors
	Video	2 x HDB-15 male
	Speaker	2 x Stereo speaker plugs
	Microphone	2 x Mono microphone plugs
	KVM Body	1 x DVI 24+5 Connector (male)
Console Ports	Keyboard / Mouse	2 x Type A USB Connectors (female)
	Video	1 x HDB-15 female
	Speaker	1 x Stereo speaker jack
	Microphone	1 x Mono microphone jack
	HOST	1 x DVI 24+5 Connector (female)
Auto-Scan Interval	5~60 Seconds	
DDC, DDC2 monitor	Yes (Max. Resolution: 2048x1536)@85Hz	
Hot Swappable	Yes	
Operating systems supported	Windows 98SE/ME/2000/XP/Vista/2003 Server, Mac, Linux	
Device driver	No	
Power	By PC USB power	
Cable Length	1.20 Meter	
Dimensions (LxWxH)	65 x 85 x 25 (mm)	
Unit Weight	450 g	

3. Installing the Cable KVM Switch

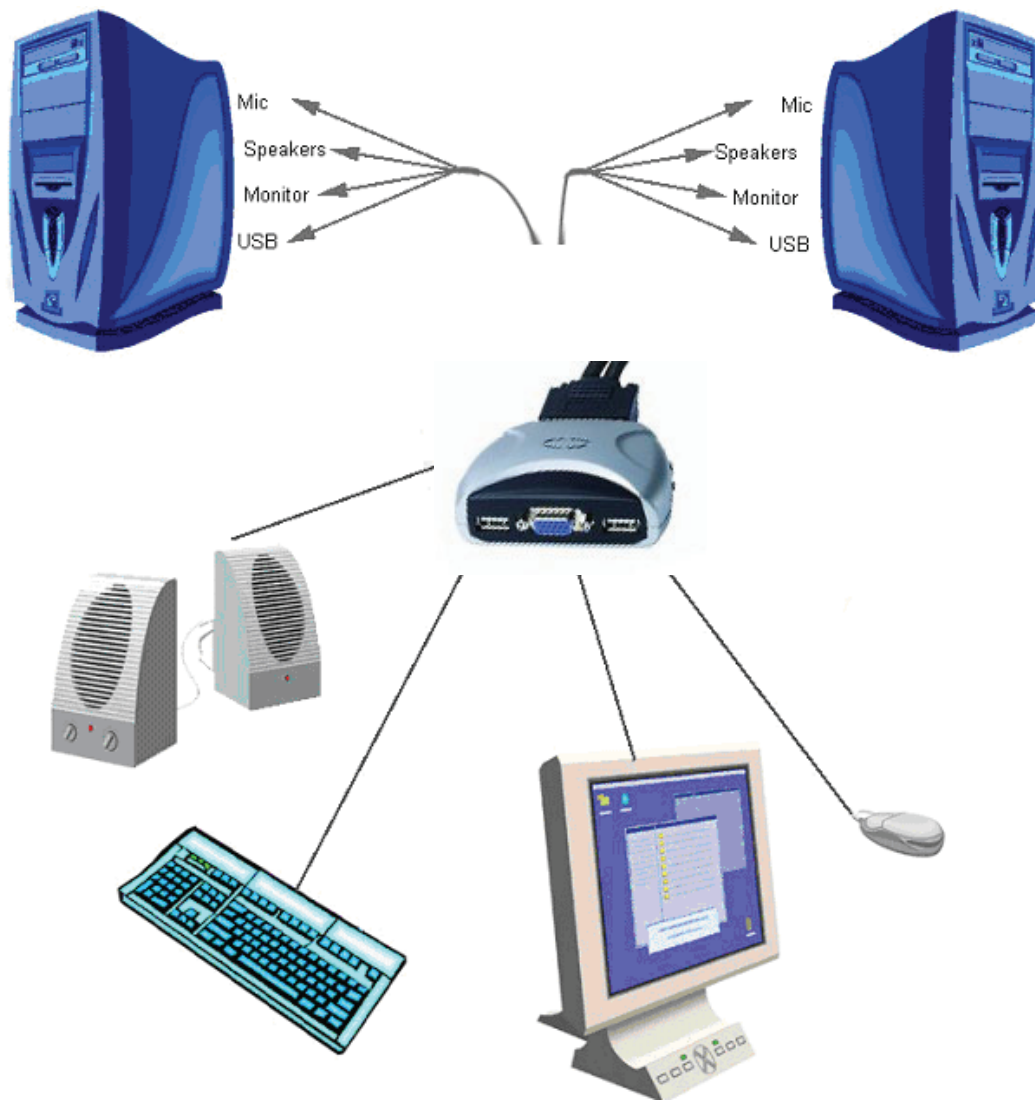
3.1 System Requirements

A PC with USB port and 1 VGA port.

Windows 98^{SE} or later, Mac OS 8/9/OS X, Linux Kernel 2.3 or later.

USB Keyboard and mouse.

3.2 Hardware Installation



Plug the USB keyboard, USB mouse, and monitor into the corresponding connectors of your 2-port USB Cable KVM Switch.

Plug the speakers into the corresponding jacks of your 2-port USB Cable KVM Switch.

Connect the KVM cables into the corresponding ports on the computers.

3.3 Notice for Sun Micro System user

Since some Sun Micro system will detect the monitor information, if system fail to get information from the Monitor, then you won't get any screen came out. So for safety, "YOU MUST SWITCH USB KVM SWITCH TO THE SUN MICRO SYSTEM" before you power on the Sun Micro System. After you seeing the screen from the Sun Micro System, then you can switch to any other Host. If you have multiple Sun Micro systems, then you have to repeat this procedure one by one.

3.4 Hot Swappable

The 2-port USB Cable KVM Switch supports hot-swap technology. All the components can be added or removed at any time without shutting the PC down.

3.5 Driver Installation (Windows 98/SE only)

After you connect the 2-port USB Cable KVM Switch to your PC, Win 98 will automatically detect the device and prompt for the driver installation. Please install the 2-port USB Cable KVM Switch by the following instruction from **Step A-E**. Please have your Windows 98 CD ready.



Fig. A

A. Press "Next" to Continue.
(Ref. Fig. A)



Fig. B

B. Select "Search for the best driver for your device" and press "Next" to continue.
(Ref. Fig. B).



Fig. C

C. Please insert the “Windows 98” CD into your CD-ROM drive. Click “CD-Rom drive” and press “Next” to continue. (Ref. Fig. C)



Fig. D

D. Press “Next” to start the installation process. (Ref. Fig. D)

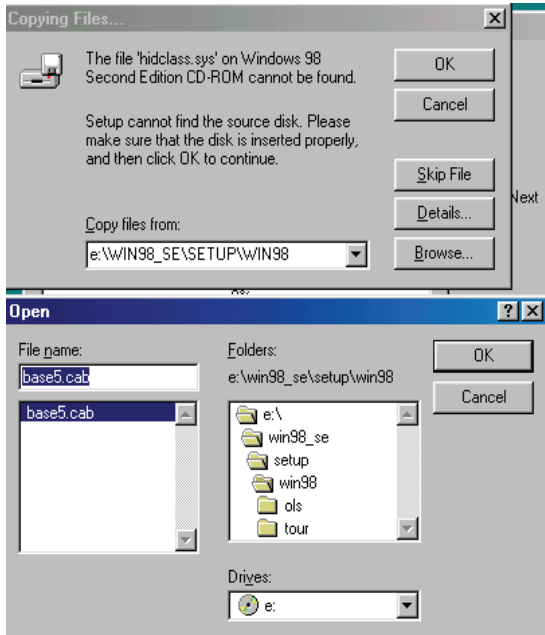


Fig. D1

D1. Sometimes Windows cannot locate the necessary driver automatically. So you need to choose “Browse” to specify the location of the driver on your “Windows 98” CD manually. *
(Ref. Fig. D1)

* The driver might be located in a different directory from the figure above.

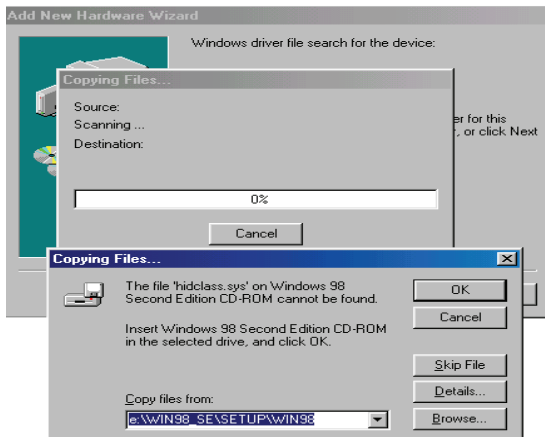


Fig. D2

D2. Press “OK” to continue
(Ref. Fig. D2)



Fig. E

E. Press “Finish” and Windows has finished installing the USB Human Interface Device driver for PS/2 keyboard & mouse.
(Ref. Fig. E)

4. Operation

The 2-port USB Cable KVM Switch can switch the keyboard, video, mouse and audio simultaneously.

Note: When using the two-step Hot Key sequences, the keys must be pressed within 5 seconds, otherwise the Hot Key action will terminate.

4.0 Push Button

User can switch PC by pressing push button.

4.1 Hot-Key operation

Note: If your keyboard is without < Scroll Lock > button, then you can change the hotkey setting and use < Caps Lock > or <Num Lock > to instead of Scroll Lock (please reference 4.2).

4.2 PC Selection

Hot Key:

Switch to PC1

[Scroll] + [Scroll] + [1]

Switch to PC2

[Scroll] + [Scroll] + [2]

Switch to Next PC

[Scroll] + [Scroll] + [→] or [↓]

Switch to Previous PC

[Scroll] + [Scroll] + [←] or [↑]



4.3 Auto-Scan Function

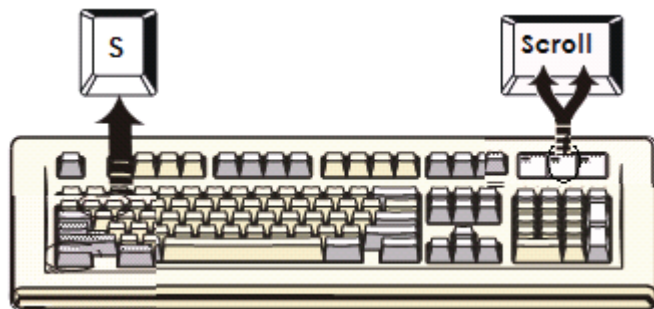
Hot Key:

[Scroll] → [Scroll] → [S] → [Esc] to **BEGIN**.

There is about 10 seconds for the initial time waiting.

Press the [Esc] key to **STOP**.

NOTE : [Esc] will stop the atuo-scan operation and make the KVM jump to the current scanning PC.



You can activate the Auto-Scan function by using the following two-step Hot Key sequence. To send commands to the KVM Switch, press the [Scroll] key twice (Step 1), then press [S] (Step 2). When you press the Auto-Scan hot key sequence, the KVM Switch alternates between the two PCs and displays them on the monitor.

Each PC is display one of time interval from 5 ~ 60 seconds (The interval is adjustable) before switching to the next. When you press any key on the keyboard, the Auto-Scan will stop and the monitor screen will jump back to the original PC. During the Auto-Scan mode, the KVM will ignore the mouse operation, if you move mouse you will not see the cursor move on the screen.

Adjustable scan time interval setting (5 ~ 60 sec.)

Hot-key: Pressing the <Scroll >, <Scroll > then <S> and < n>

*n = 1~ 9

<n>	Scan time interval	<n>	Scan time interval
1	5	6	30
2	10	7	35
3	15	8	40
4	20	9	60
5	25		

4. 4 (PC+Audio) Combination Selection

Hot Key:—

[Scroll] → [Scroll] → [F1] or

[Scroll] → [Scroll] → [F2]

4.5 Single Audio (Speaker) Selection

Hot Key:—

[Scroll] → [Scroll] → [Q] to select PC1 Speaker

[Scroll] → [Scroll] → [W] to select PC2 Speaker

Hot Key definition table

Step 1	Step 2	Action
[Scroll] + [Scroll]	[→] or [↓]	Switch to the next PC
[Scroll] + [Scroll]	[1]	Switch the active connection to PC 1
[Scroll] + [Scroll]	[2]	Switch the active connection to PC 2
[Scroll] + [Scroll]	[F1]	Combined switching (PC+Audio) to PC 1
[Scroll] + [Scroll]	[F2]	Combined switching (PC+Audio) to PC 2
[Scroll] + [Scroll]	[S]	Activate the Auto-Scan mode, default 10 sec.
[Scroll] + [Scroll]	[S] + [1~9]	Select the Auto-Scan interval from 5 to 60 Sec.

Disclaimer

Information in this document is subject to change without notice. The manufacturer does not make any representations or warranties (implied or otherwise) regarding the accuracy and completeness of this document and shall in no event be liable for any loss of profit or any other commercial damage, including but not limited to special, incidental, consequential, or other damages.

No part of this document may be reproduced or transmitted in any form by any means, electronic or mechanical, including photocopying, recording or information recording and retrieval systems without the express written permission of the manufacturer.

All brand names and product names used in this document are trademarks, or registered trademarks of their respective holders.

FCC Statement

This device generates and uses radio frequency and may cause interference to radio and television reception if not installed and used properly. This has been tested and found to comply with the limits of a Class B computing device in accordance with the specifications in Part 15 of the FCC Rules. These specifications are designed to provide reasonable protection against such interference in a residential installation. However, there is no guarantee that interference will not occur in a particular installation. If this device does cause harmful interference to radio or television reception, which can be determined by plugging the device in and out, the user can try to correct the interference by one or more of the following measures:

- Reorient or relocate the receiving antenna.
- Increase the separation between the device and receiver.
- Connect the computer into an outlet on a circuit different from that to which the receiver is connected.
- Consult the dealer or an experienced radio/TV technician for help.

