



USB 2.0 WIRELESS WEBCAM



User Manual
DA-71814

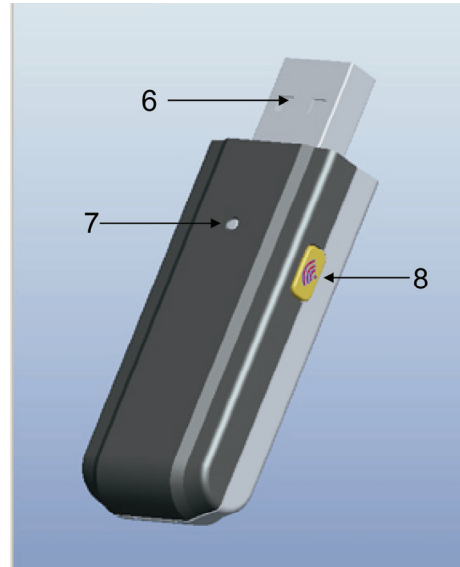
Introduction

Thank you for using the wireless camera of a new generation. It can be of avail once it is inserted. It is the ideal product for real-time wireless image transmission. Its appearance is exquisite and it is portable; both the definition and the transmission speed are high. The camera is also equipped with built-in microphone, which enables others to hear your voice when you are surfing online. Its wireless feature simplifies the communication between you and your friends/relatives in remote places.

Graphic presentation:



Transmitting terminal



Receiving terminal

- 1 - Take photos, press Key/Code-matching key
- 2 - Power switch
- 3 - USB Interface for charging
- 4 - Power indicator light/Indication of charging/Indication of code-matching
- 5 - Microphone
- 6 - Receiving terminal inserted into computer
- 7 - Operation indicator light /Code-matching indicator light
- 8 - Code-matching key

Features

- Digital 2.4GHZ, high-quality image compression
- Wireless ideal distance 3M-5M
- Working current about 80mA
- Built-in battery 600mA/3.7V
- It can work for about 6 hours after it is fully charged
- COMS sensor, 300, 000 Pixels (640X480)
- USB interface for charging
- Built-in MIC.
- Support XP/VISTA / 7 System, it can be of avail once it is inserted.
- Support MSN/QQ/SKYPE Video Communication
- Frame rate: 320X240, it can reach about 10 frames within 5m, 640X480, it can reach about 7 frames within 5m.
- Support snapshot function
- Adjustable of brightness, contrast and saturation is available
- Software interpolation 5M (2560x1920)

System requirements

- * PC or laptop with USB interface.
- * Pentium 200 or higher CPU.
- * Windows XP/VISTA System Software.
- * Free space of over 20MB.
- * CD—ROM Driver.
- * Usable memory of over 32MB.
- * Support DIRECTX VGA Display Card.

Code-matching

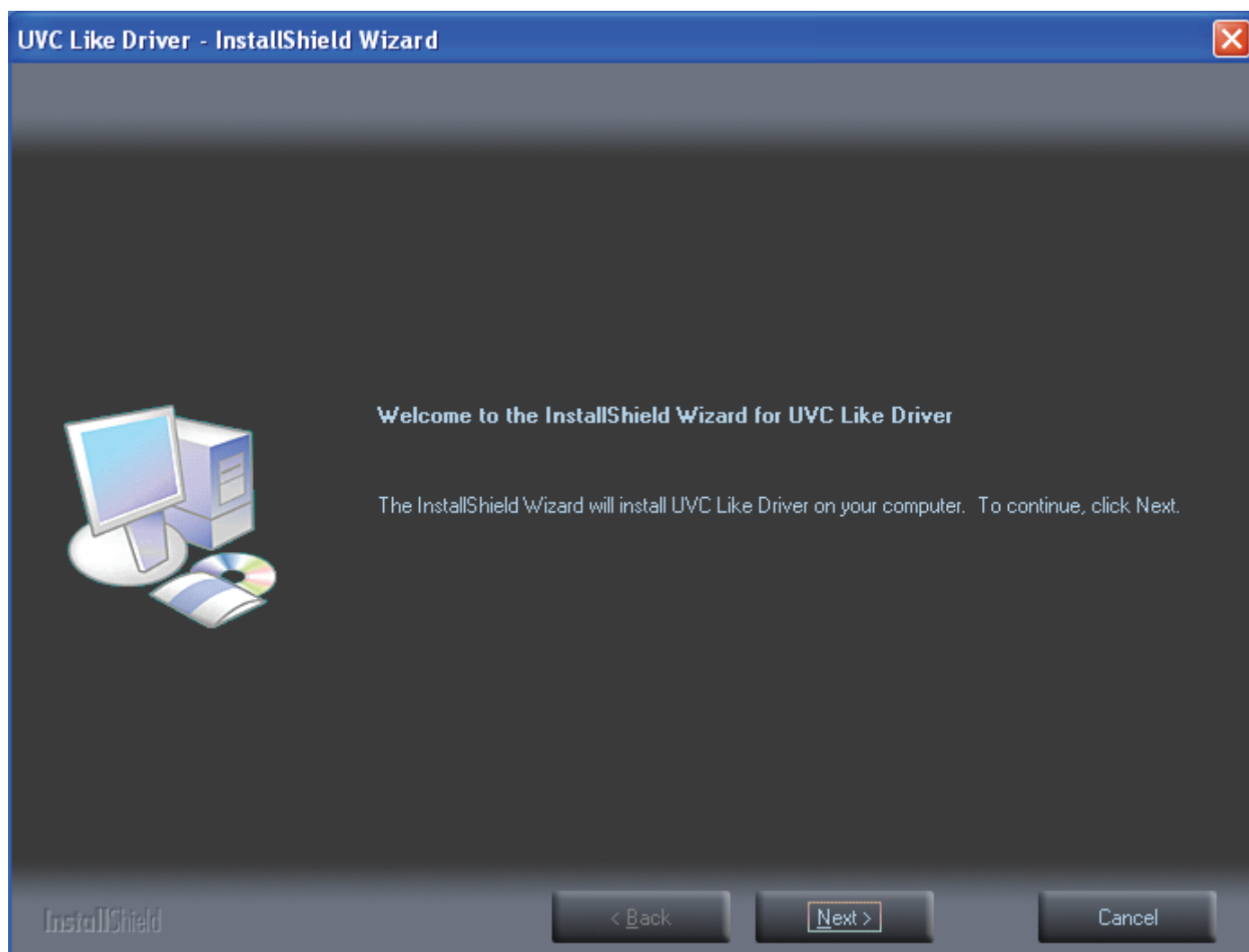
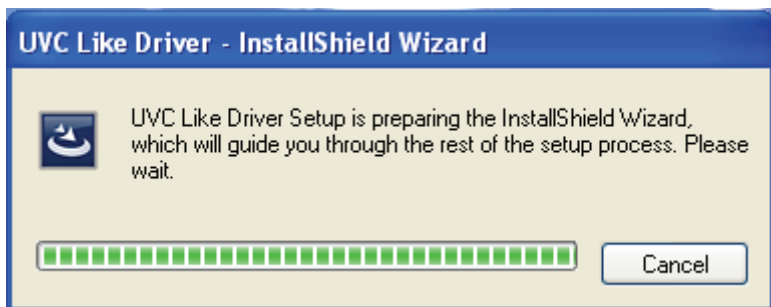
When conducting code-matching, insert USB receiver into the computer. At this moment, the red light is on. Please press the key of the receiving terminal and release it until the red light of the receiving terminal flickers. At the moment, switch on the power supply for the transmitting terminal, the red light is on. Please press the key of the transmitting terminal until the red light of the receiving terminal stops flickering. It indicates the code-matching is finished. At this moment, it is feasible to use **CamApp** to open the image (**CamApp** is available only after the driver is installed). The red light of the receiving terminal and the transmitting terminal will flicker for 5 times each second after the image is opened. If code-matching for a second time is initialized, please operate following the same code-matching method.

Charging

When it is in charging status, the green light of the USB wireless webcam is on. The green light of the webcam will be off after the charging is completed. When voltage of the battery is lower than the working voltage, the flickering of the red light will be extremely fast (about 20 times each second). At this time please give the charging cable to the camera. When it is to be charged, only by inserting the USB power cord into another side of the computer, the charging of the camera will begin. The time for charging shall cover about 3 hours. It can work for 6 hours after one charging is completed.

Driver program installation

Please insert the driver cd in your cd rom drive "Drive/ Application", the system will automatically start the CD. Install the required files for your operating system. (Below is an example of WINDOWS XP)



UVC Like Driver - InstallShield Wizard

InstallShield Wizard Complete

The InstallShield Wizard has successfully installed UVC Like Driver. Before you can use the program, you must restart your computer.



Yes, I want to restart my computer now.

No, I will restart my computer later.

Remove any disks from their drives, and then click Finish to complete setup.

InstallShield

< Back

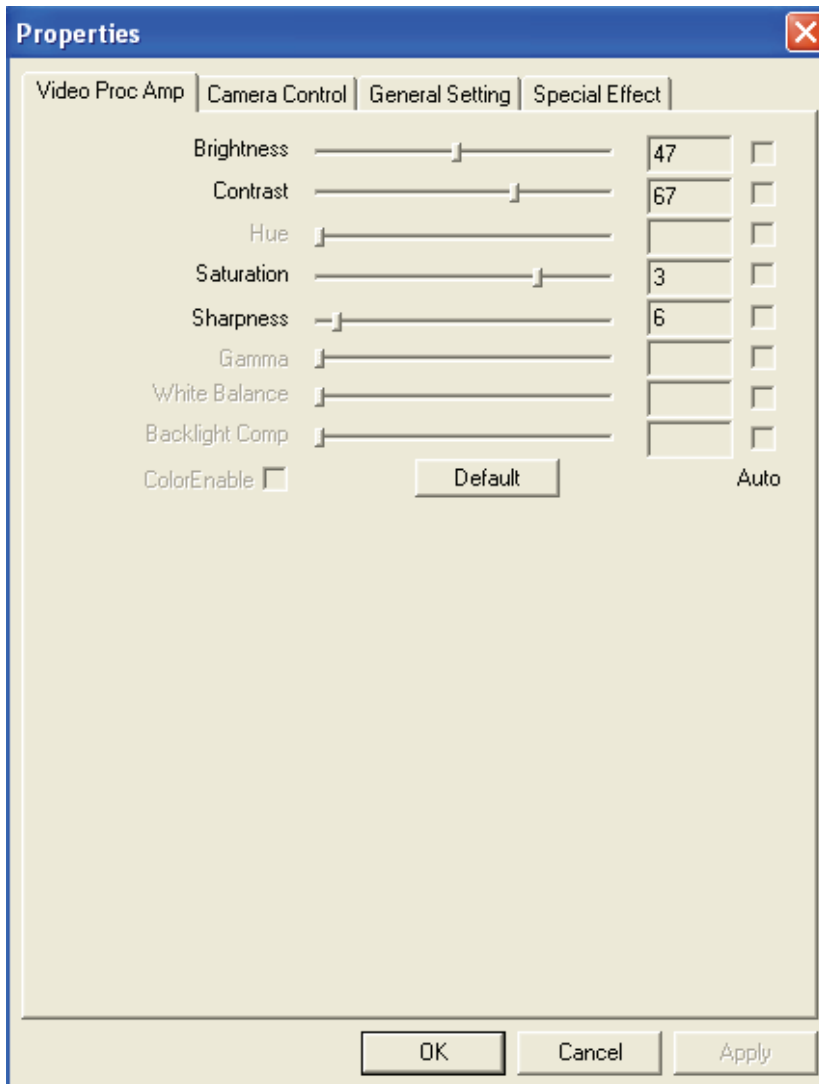
Finish

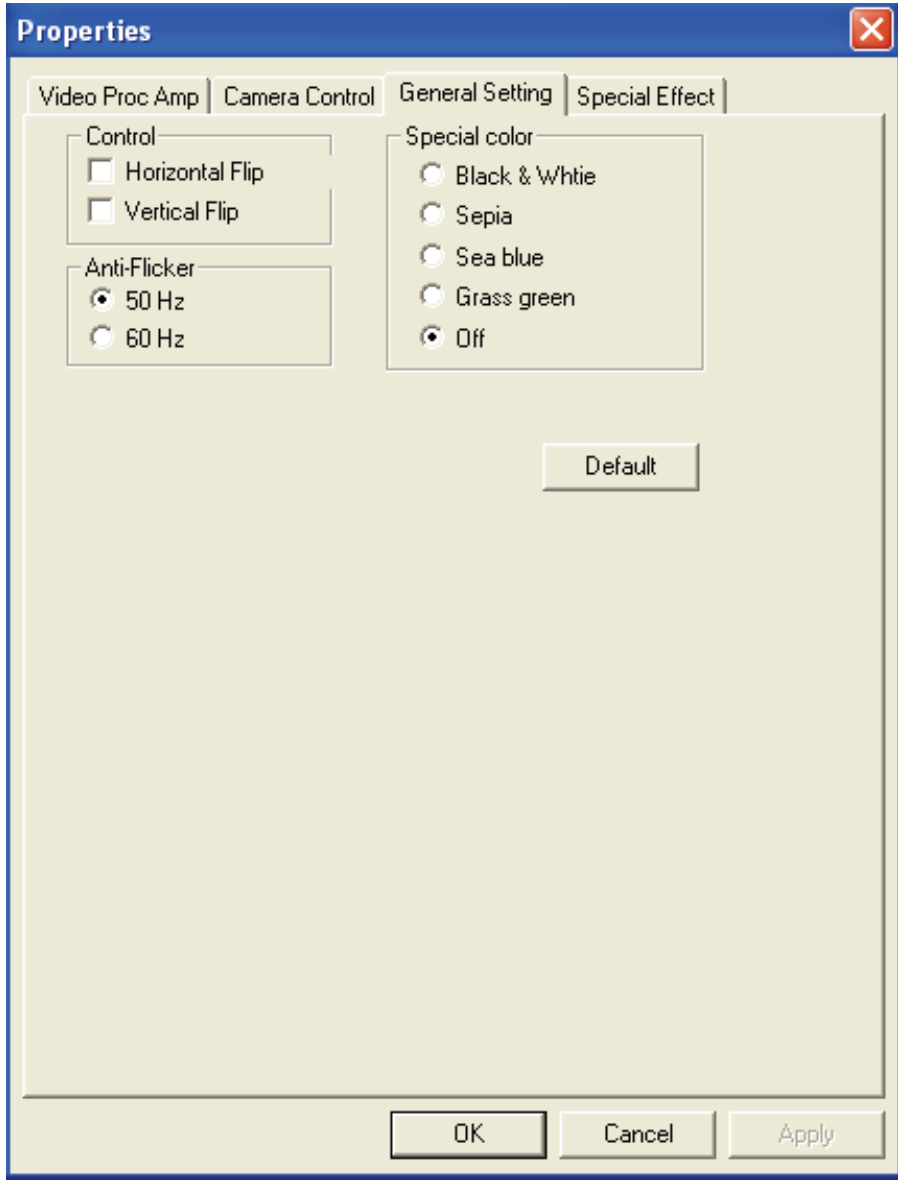
Cancel

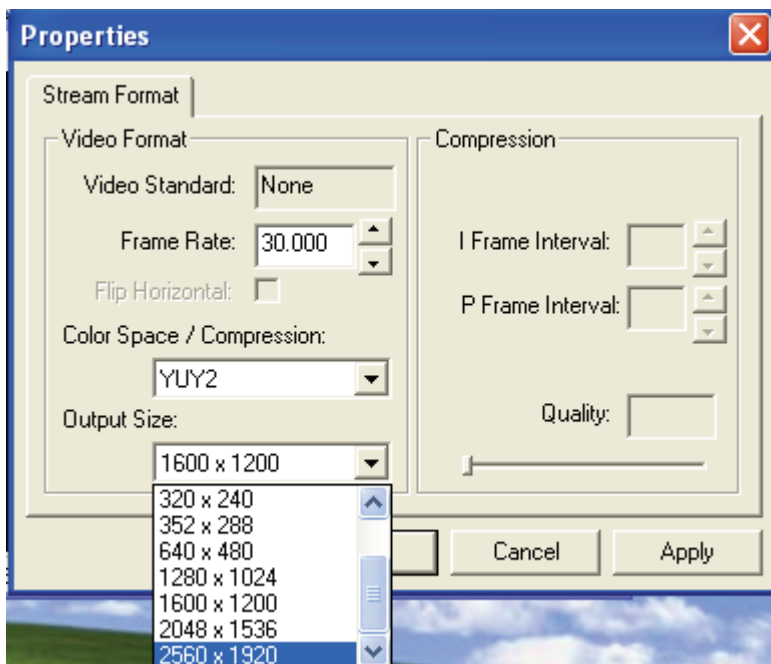
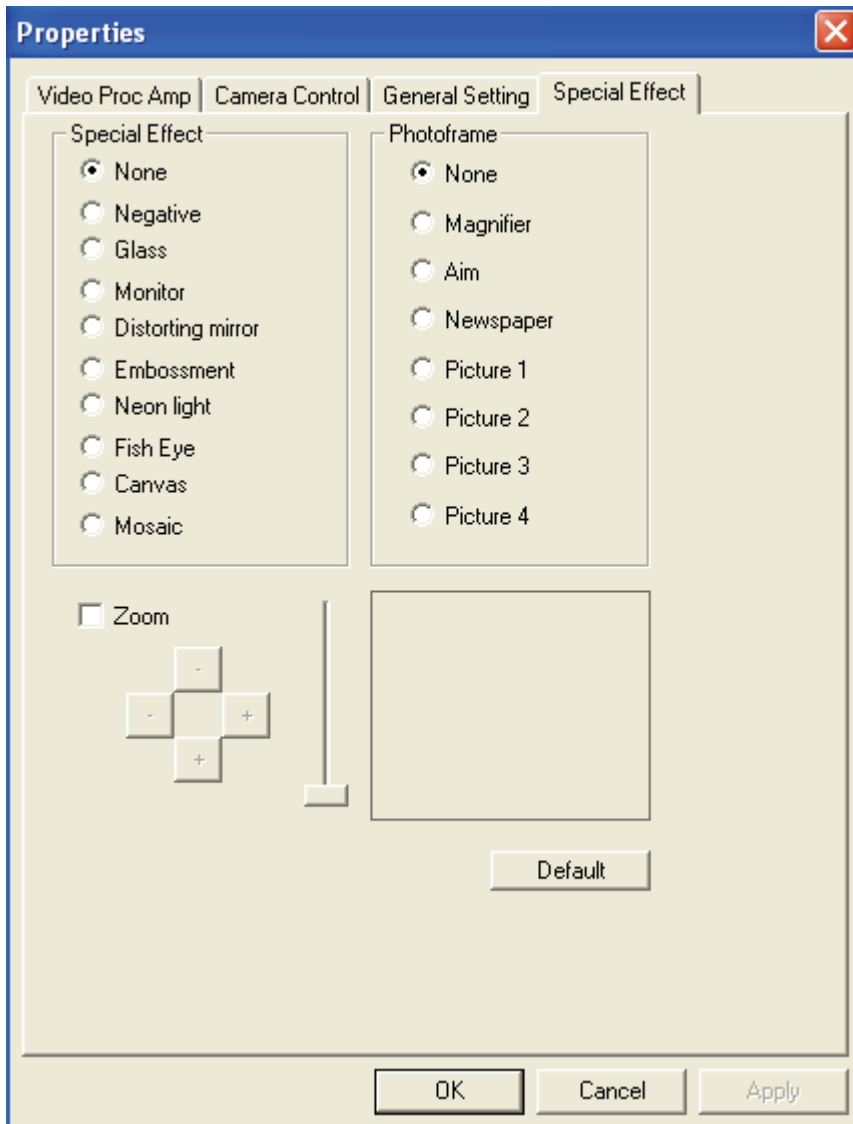
Choose Finish in the picture above, the icon of CamApp will appear on the desktop. Double-click it as is shown in the picture below



In the Drop Down Menu of option in the picture above, there are the following function options (Special effect / Frame / Interpolation)







Taking photos in static state under the Drop Down Menu of capture in the picture below can reach 20 M. However, the photo has neither special effect nor frame.

