



## NVMe/SATA Docking Station



**Quick Installation Guide**

DA-71547

## 1. Description

The SSD Docking Station from DIGITUS® can accommodate M.2 SSDs in NVMe or SATA technology with up to 4 TB. Supports NVMe SSDs with B+M Key & M-Key and SATA SSDs with B+M-Key, each in the formats 2242, 2260, 2280 & 22110. Easily extend the storage capacity of numerous USB-C™ devices such as PCs, notebooks, TVs, gaming consoles or routers.

## 2. Feature

- Supports SATA M.2. B+M Key SSD and NVMe M Key SSD
- Supported formats: 2242, 2260, 2280 & 22110
- Supports cards NVMe & SATA SSDs up to 4 TB capacity
- High data transfer rate of up to 10 Gbps (U.A.S.P + T.R.I.M support)
- USB-C™ connection: USB 3.2 Gen2
- Backwards-compatible with USB 3.0 / USB 2.0
- Ideal storage extension for notebooks, PCs, gaming consoles, TVs, NAS or routers (USB-C™)
- Supports Hot Swap (Plug in and eject during operation)
- Plug and Play, no driver installation required
- LED indicators for hard drive transfer (blue), and power (blue)
- Manufacturer's notes: Not all USB-C™ ports support all features of the USB Type-C™ standard. Make sure that the USB-C™ port of your notebook supports DisplayPort Alternate Mode (DP-Alt modes) as well as USB Power Delivery (PD).

### 3. Package content

- 1 x SSD Docking Station
- 1 x Quick start guide

### 4. Specification

USB-C™ connection	1 x Data USB-C™ 3.2 Gen2, 1 x Power jack USB-C™
Storage formats	NTFS, FAT, FAT32
Connection cable	18cm
Dimensions	W: 6 x D: 6 x H: 1,45cm
Weight	40 g
Material	Aluminum + ABS
Color	black
Operating temperature	-40°C ~ 80°C
Systems	Windows 11/10/8/8.1/7/XP, mac OS 10.0 or higher
Applications	PC, notebook, TV, router or gaming console (with USB-C™ connection)

## 5. Product Details

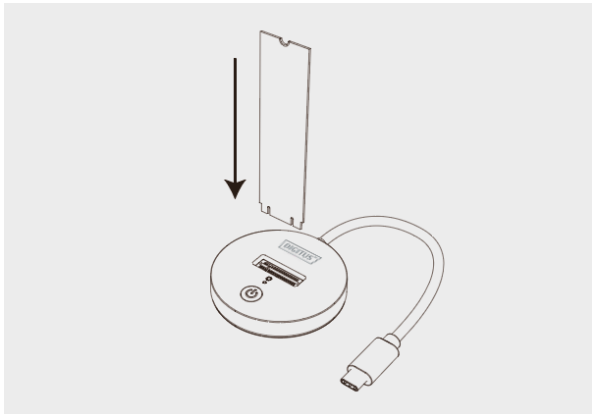


1	M.2 Slot	3	Power Switch
2	Power LED	4	Type-c

## 6. PC mode (Read and Write)

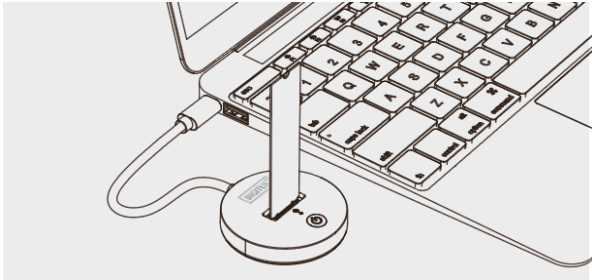
### 6.1 SSD installation

Insert NVMe M.2 SSD into M.2 slot.



## 6.1 Reading & Writing

- Connect to PC with Type C port.
- Press the power button, blue light will be on when connected to power, flash when reading & writing HDD / SSD
- Driver will be installed automatically; you can see the notice at the lower right corner of the computer.
- When driver is installed successfully, click disk management to find the external M.2 SSD

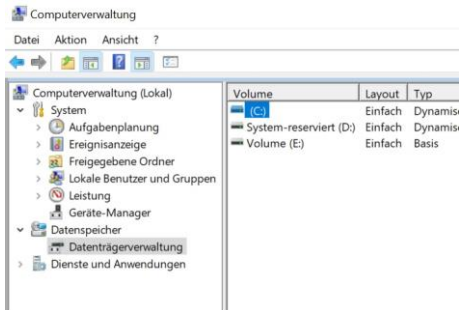
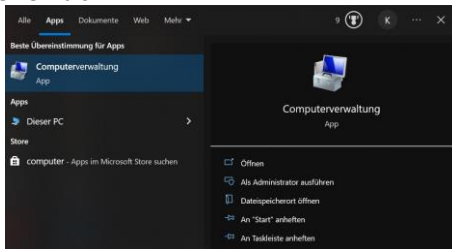


Note: If it is used SSD, you could find it in “computer “, reading & writing normally.

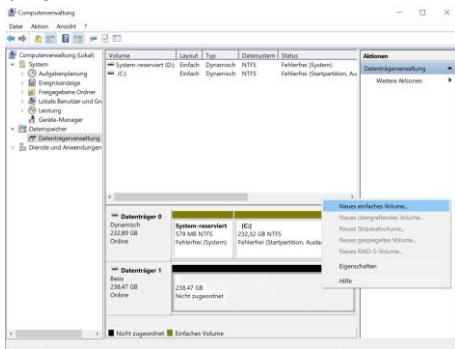
If it is new SSD, need to initialize, partition, format it before use.

## 7. New hard disk format

### 7.1 View “computer-Management-disk management” to find the new disk.



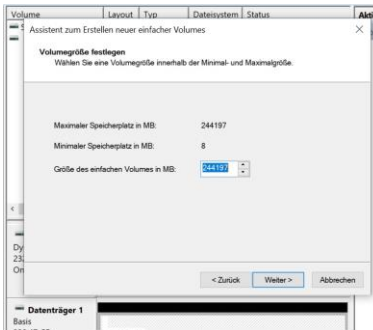
## 7.2 Right click the “Disk 1” then click “New Simple Volume”.



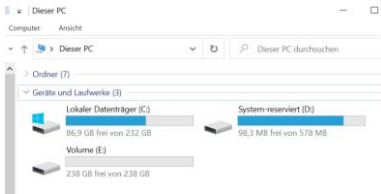


## 8. Hard disk partition

8.1 According to the instruction, choose the size of partition then click “Next” to finish.



8.2 Then you can find the new hard disk in the “computer”, it’s ready to be use.



Hereby Assmann Electronic GmbH, declares that the Declaration of Conformity is part of the shipping content. If the Declaration of Conformity is missing, you can request it by post under the below mentioned manufacturer address.

[www.assmann.com](http://www.assmann.com)  
Assmann Electronic GmbH  
Auf dem Schüffel 3  
58513 Lüdenscheid  
Germany

