



M.2 NVMe + M.2 SATA SSD Docking Station with SD Express Card Reader, USB-C™



Quick Installation Guide
DA-71546

Package content:

- 1 x M.2 NVMe + M.2 SATA SSD Docking Station with SD Express Card Reader, USB-C™
- 1 x USB-A power adapter
- 1 x USB-C™ connecting cable, 80 cm
- 1 x USB-C™ to USB A connecting cable, 80 cm
- 1 x Quick start guide

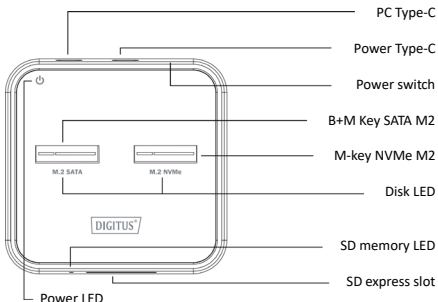
Description

The 3-in-1 Docking Station from DIGITUS® can accommodate M.2 SSDs in NVMe or SATA technology; an SD Express 7.1 card reader with the highest data transfer rates is also integrated. Manage M.2 data carriers with up to 4 TB per slot and additionally SD.

Feature Benefits

- 1 x M.2 Box for NVMe SSDs (B+M-Key / M-Key)
- Plug and Play, no driver installation required
- 1 x M.2 Box for SATA SSDs (B+M-Key)
- 1 x SD Express 7.1 memory card reader / 1000 MB/s max.
- High data transfer rate of up to 10 Gbps (U.A.S.P + T.R.I.M support)
- Supports cards NVMe & SATA SSDs up to 4 TB capacity
- Supported formats: 2242, 2260, 2280 & 22110
- Can be used as a storage medium for up to 10 TB in total
- USB-C™ connection: USB 3.2 Gen2
- Ideal storage extension for notebooks, PCs, gaming consoles, TVs, NAS or routers (USB-C™)

Product Details



Technical Specification

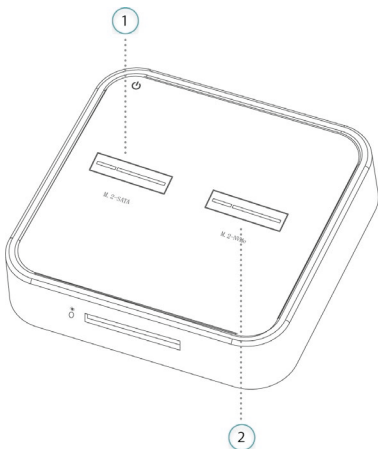
Interface:	Type-C to M.2
Support SSD:	B+M Key(SATA) ; M-key/B+M key(NVMe)
Support SD:	SD Express and down compatibility
USB speed:	10 Gbps
Rating:	5V, 3A
Feature:	External storage and SD card reader
Compatible:	Windows XP/7/8/8.1/10, MAC OS
Unit size:	79(L)X76(W)X18(H)MM
LED:	Power(green),disks(white),SD(white)

Attention



Check the connector icon and SSD label match before assembling SSD, cannot work if assemble wrong

1. SATA connector workable to B+M key SATA SSD only
2. NVMe connector workable to M-key NVMe and B+M key NVMe



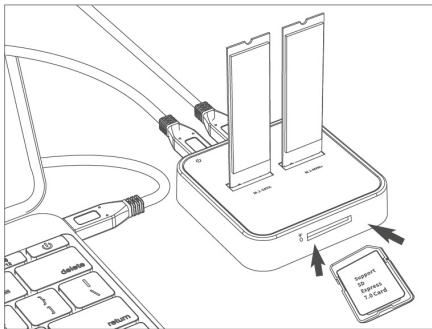
PC mode (Read and Write)

1. External storage

- Insert M.2 SSD to correct SSD slot
- Connect USB cable with docking and PC/NB
- Connect power type C with docking and AC adapter
- Press power switch one time, power and disks LED will illuminate following

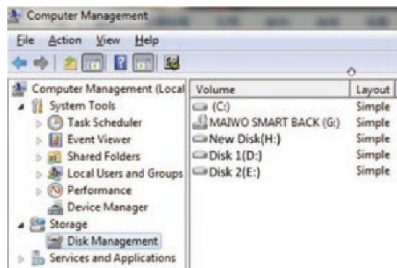
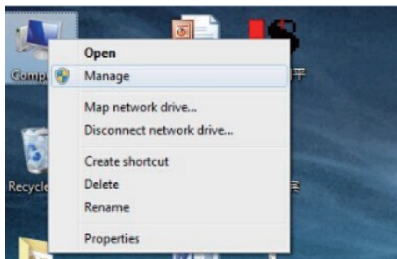
2. SD card reader

- Insert SD memory card to slot
- Connect USB cable with docking and PC/NB
- Connect power type C with docking and AC adapter
- Press the power switch one time, then SD LED will illuminate following

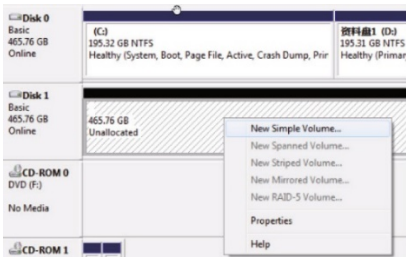


New hard drive format

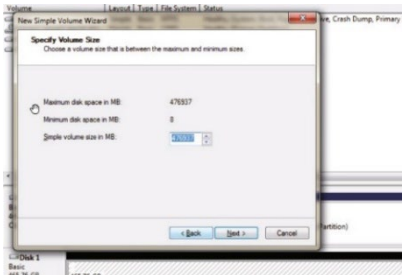
1. View "computer-Management-Disk Management" to find the new disk.



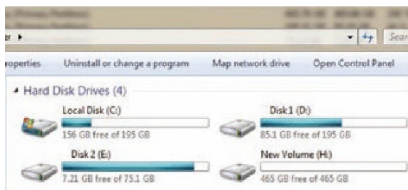
2. Right click the "Disk 1" then click "New Simple Volume".



3. According to the instruction, choose the size of partition then click "Next" to finish.



4. Then you can find the new hard disk in the “computer”, it’s ready to be use.



Disclaimer:

The product name and brand name may be registered trademark of related manufacturers. TM and ® may be omitted on the user manual. The pictures on the user manual are just for reference, and there may be some slight difference with the real products.

We reserve the rights to make changes without further notice to a product or system described herein to improve reliability, function or design.

Hereby Assmann Electronic GmbH, declares that the Declaration of Conformity is part of the shipping content. If the Declaration of Conformity is missing, you can request it by post under the below mentioned manufacturer address.

www.assmann.com

Assmann Electronic GmbH

Auf dem Schüffel 3

58513 Lüdenscheid

Germany

