



# USB-C M.2 NVMe SSD ENCLOSURE



## Quick Installation Guide

DA-71120-1

# Table of contents

1.	Introduction .....	3
2.	Technical Features .....	3
3.	Package content .....	4
4.	Specification .....	5
5.	Installation .....	6
6.	Formatting Instructions for Connecting Computer Hard Disk Boxes .....	8
7.	FAQ instructions .....	9

# 1. Introduction

The DA-71120-1 M.2 NVMe SSD enclosure offers a powerful and versatile storage solution for all your data needs. It supports M.2 modules in 2230, 2242, 2260 and 2280 formats and is compatible with a wide range of SSDs. With a capacity of up to 8 TB, it offers enough space for all your files and data. Thanks to the fast data transfer rate of 10 Gbps and the USB 3.1 Gen 2 interface, which is backwards compatible with USB 3.1, 3.0, 2.0 and 1.1, you can enjoy fast file transfers and smooth performance. The plug-and-play design allows for easy installation without complicated settings. The robust JMS583 chipset ensures reliable and efficient NVMe performance, while the integrated LED indicator allows easy monitoring of SSD status. The durable and stylish aluminum casing in Pantone 430C offers excellent passive heat dissipation. With compact dimensions of 101x32x10 mm and a weight of only 97 g, the housing is ideal for mobile use and compatible with Windows, macOS, Linux, Google Chrome OS, Android and iOS.

## 2. Technical Features

- **Wide compatibility:** Supports M.2 modules in 2230, 2242, 2260 and 2280 formats, compatible with a wide range of SSDs.

- High capacity: Offers up to 8 TB of storage space for all your files and data.
- Fast data transfer: Data transfer rate of 10 Gbit/s for fast file transfers and smooth performance.
- USB 3.1 Gen 2 interface: Latest USB technology with backwards compatibility to USB 3.1, 3.0, 2.0 and 1.1.
- Plug and play: Simply connect via USB and get started straight away.
- Cross-platform support: Compatible with Windows, macOS, Linux, Google Chrome OS, Android and iOS.
- Robust chipset: JMS583 chipset for reliable and efficient performance.
- LED activity indicator: Integrated LED indicator for monitoring the status of your SSD.
- Durable and stylish: aluminum housing in Pantone 430C with excellent passive heat dissipation.
- Portable design: Compact and lightweight with dimensions of 101x32x10 mm and a weight of only 97 g.

### **3. Package content**

- External SSD enclosure, M.2 – USB-C
- USB cable (C - A), 25 cm
- USB A to C adapter
- QIG

## 4. Specification

Supported Mini SSD in format	M.2, B+M Key (NVMe)
Supported storage technology	NVME
Max. supported capacity	8TB
Installation method	tool-free
Data transfer rate	10 Gbit/s
Supports M.2 modules in the format	2230,2242,2260,2280
Supported keys	M.2, B+M Key (NVMe)
USB standard	USB 3.1 Gen2
Backwards compatible with USB	3.1/ 3.0 / 2.0 / 1.1
Chipset	JMS583
LED activity indicator	yes
Casing	Aluminum
Heat dissipation	passive
Supports	Plug & Play
Power supply	USB connection
Supports system	Win 11,10, 8, 7
	Android / iOS

	macOS 9 or higher, Linux 2.4 or higher, Google Chrome OS
Operating temperature	5 to 50°C
Storage temperature	-40 to 70°C
Humidity during operation	5 to 90% (non-condensed)
Dimensions	101x32x10 mm
Weight	97g

## 5. Installation

1. Press the button, keep the button sliding to the left (unlock symbol), and squeeze down to push out the bracket.



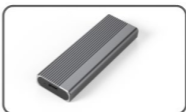
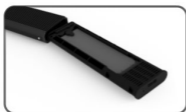
2. Press the button to slide the liner out of the hard drive case and start assembling the hard drive.



3. Align the hard disk with the inner tray port, place the solid-state hard disk securely, and make sure the hard disk is aligned with the M. 2 port.



4. Press M. 2 SSD down gently, align the snap with the silicone pad, rotate and tighten the hard disk.



5. Tilt the corner of the inner bracket with snap by 45°, squeeze it into the outer box of the hard disk, put it back into the aluminum alloy shell in the positive position, push it to the bottom until the automatic lock is heard, then the installation can be finished.

## 6. Formatting Instructions for Connecting Computer Hard Disk Boxes

- Step 1: Select My Computer Right-click.
- Step 2: Double-click Administration
- Step 3: Select a disk to manage after the disk management can recognize the hard disk (initialize the hard disk)
- Step 4: Right click on the blank space of the new disk to create a new simple volume.
- Step 5: Then click on the step until it is finished.
- Step 6: After the final click is completed, it will be displayed that formatting is in progress until the formatting is completed.

**Note:** If the disk is dropped, it may be the cause of insufficient power supply for USB interface. Resulting in frequent disconnection.

## 7. FAQ instructions

**Q: After installing the SSD into the case, why cannot the laptop or PC recognize the SSD?**

A:

- Please kindly confirm your SSD key out port is M key or B&M Key SSD. Our case does not support SATA AHCI B Key SSD.
- Please kindly check your cable connected the SSD case, Confirm the out port has no sundries.
- Please kindly identify your SSD attribution to confirm it has been formatted. If not formatted, please do it.
- If you need connected to PC, please kindly connect the cable USB port to the back of the Main box. The power supply of the front USB out port is not enough to support the SSD.

**Q: Why can't the data transfer speed reach 10Gbps?**

A:

- Please confirm your SSD and your computer in good condition, the data transfer has a relationship with the sectors of SSD and your Computer configuration.
- Please updated your computer Main board driver and USB driver to the latest edition.

- The data transfer speed has a relationship with the document format, different speed with the document format.
- The 10Gbps is a theoretical speed value, the exact speed depends on your Computer's, SSD's condition and Document format.

B:

- The transmission speed is also related to the interface of computer equipment. For example, our product is 3.1. If your computer interface is 3.0, the speed will also be affected, and the transmission speed will change to 3.0. USB3.1 is also including gen1 and gen2. Gen2 is faster than gen1.

Hereby ASSMANN Electronic GmbH declares that the Declaration of Conformity is part of the shipping content. If the Declaration of Conformity is missing, you can request it by post under the below mentioned manufacturer address.

[info@assmann.com](mailto:info@assmann.com)

Assmann Electronic GmbH  
Auf dem Schüffel 3  
58513 Lüdenscheid  
Germany

