



# 11-Port USB-C™ Docking Station with SSD Enclosure



**Quick Installation Guide**

DA-70896

# 1 Product Introduction

This DIGITUS® 11-in-1 Docking Station provides you with a housing with a slot for M.2 SSD / Key M cards in addition to the common interfaces

## 1.1 Features

- There is an M.2 slot on the underside, an M.2 SSD can be connected
- HDMI output for a UHD 4K display with a resolution of up to 3840 x 2160 @ 30 Hz
- VGA output with a resolution of up to 1080P @ 60 Hz
- 4 x SuperSpeed USB (USB 3.2 Gen 1, 5 Gbps) type A jack
- Power Delivery 3.0 to charge your notebook via the docking station
- Gigabit Ethernet connection (RJ45)
- Card reader for SD/TF cards
- Extend your notebook, tablet or smartphone

## 1.2 Package Contents

- 1x USB Type-C™ Docking Station with SSD Enclosure
- 1 x Q1G



## 1.3 Specifications

- Supports UHD up to 4K/30Hz up to 3840 x 2160p resolution
- Supports M.2 modules in format 2280, 2260 and 2242 with Key M
- Transfer of audio and video signals, supports HDCP 1.4 and 2.2
- Cable length without connection: approx. 15 cm
- LED display for power and access
- Dimensions: L 12.3 x W 5.0 x D 1.4 cm
- Weight: 155 g
- Color: Gray / Black
- Not all USB-C™ ports support all the features of the USB Type-C™ standard. Make sure that your notebook's USB-C™ port supports the DisplayPort Alternate Mode (DP Alt Mode) as well as USB Power Delivery (PD).
- The video output capabilities depend on your notebook's graphic card and the connected monitor. Certain graphics cards have limited MST support while some screens also restrict the available resolution.
- 1 x HDMI connection for an additional monitor
- 1 x VGA 1080P connection
- 1 x USB Type-C™ connection for connection to notebook
- 1 x USB Type-C™ connection – power supply
- 4 x USB 3.0 SuperSpeed connection (data transfer 5 Gbps max.)
- 1 x Gigabit Ethernet connection – Connects your notebook to the Internet / LAN
- Card reader for SD & TF cards
- 1 x 67 Pin M.2 Key M Slot

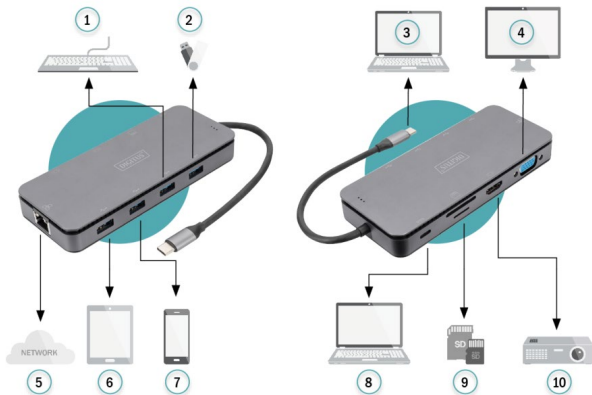
## 1.4 Compatible Device

MacBook 12", MacBook Pro 2016/2017/2018/2019, MacBook Air 2018/2019, iPad Pro 2018, Chromebook, Huawei mate 30/mate 30 pro, HP Spectre Pavilion, Samsung 10/S9/Note8/Note 9, Huawei Matebook, Dell XPS series, Mi Air and other Type-C 3.1 devices

## 1.5 Notice

- During using the product, if the device connected to the product will be disconnected and the data will be lost. The connection will be restored after a few seconds.
- USB Ports are recommended for data transmission and should not be used as an output current unless the computer or HUB is connected to a power supply.
- 3.0 Card reader, SD Card and TF card can be used at the same time.
- PD charging is required when connected to high-power devices such as the large capacity portable hard disk.
- The operating temperature is about 45°C (The maximum temperature when working at full load is 55°C).
- When using the mirror screen function (In the mirror mode), HDMI interface supports 4K HD and VGA interface support 1080P. When connecting HDMI and VGA at the same time, the resolution is uniform to 1080P.

## 2 Connection Diagram



- |   |             |    |              |
|---|-------------|----|--------------|
| 1 | Keyboard    | 6  | Tablet       |
| 2 | USB Stick   | 7  | Smartphone   |
| 3 | Notebook    | 8  | Notebook     |
| 4 | VGA Display | 9  | Memory Cards |
| 5 | Network     | 10 | HDMI Display |

Hereby Assmann Electronic GmbH, declares that the Declaration of Conformity is part of the shipping content. If the Declaration of Conformity is missing, you can request it by post under the below mentioned manufacturer address.

**[www.assmann.com](http://www.assmann.com)**

Assmann Electronic GmbH  
Auf dem Schüffel 3  
58513 Lüdenscheid  
Germany

