



USB-C™ Dock, 5 Port



Manual
DA-70891

CONTENTS

1.0 INTRODUCTION	3
2.0 FEATURES	3
3.0 SPECIFICATIONS	4
4.0 PACKAGE CONTENTS	4
5.0 CONNECTOR DESCRIPTION	5
7.0 EXAMPLE OF APPLICATION	6



DEAR CUSTOMER

Thank you for purchasing this product. For optimum performance and safety, please read these instructions carefully before connecting, operating or using this product. Please keep this manual for future reference.

1.0 INTRODUCTION

With the DIGITUS® USB-C™ to HDMI® Adapter, you have the option of connecting an additional HDMI® display to your existing device with a USB-C™ port. This allows you to reproduce your content on a large monitor, projector or TV in 4K resolution, for example – easy streaming with minimal effort. Two additional USB 3.0 connections are available for you to connect other peripheral equipment. For instance, USB memory sticks or a mouse/keyboard combination can be used here. You can even connect an additional USB hub to increase the number of USB connections. The integrated card reader can be equipped with SD and MicroSD cards and can be used for both storage media simultaneously, that is, it can work with both card formats at the same time. Thanks to its compact design, the DIGITUS® Docking Station is easy to travel with – perfect for business trips and presentations on HDMI® displays of all kinds.

2.0 FEATURES

- Use this adapter to send your desktop to a second display
- Use the two additional USB 3.0 ports with SuperSpeed for additional peripheral equipment
- SD and MicroSD card readers are also integrated and can work simultaneously
- Supports USB 3.0 SuperSpeed (5 Gbps max.) for data transmission in a very short time
- Supports HDMI® resolution up to UHD 4K/30 Hz
- Supports Secure Digital 3.0 UHS-I (Ultra High Speed)
- Simultaneous use of SD and MicroSD cards possible
- Compact dimensions – ideal for travel
- Plug and Play – no driver/software installation required

3.0 SPECIFICATIONS

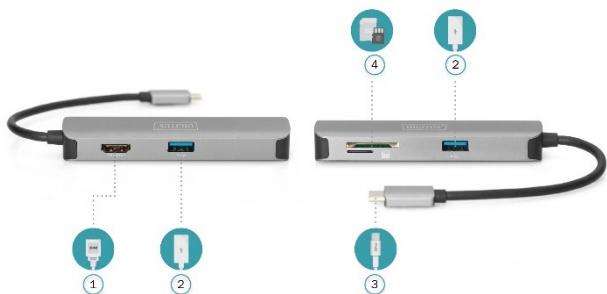
- Input: 1 x USB-C™
- Connections: 2 x USB 3.0, 1 x HDMI®, 1 x SD, 1 x microSD
- Supported resolutions: 4K (3840 x 2160p / 30 Hz)
(Full HD 1080p/60Hz)
- Supports USB 3.0 SuperSpeed (5 Gbps max.)
- HDMI® version: 1.4b
- HDCP version: 1.4
- Operating temperature: 0 °C to +45 °C
- Operating humidity: 10% to 85% RH (non-condensing)
- Storage temperature: -10 °C to +70 °C
- Storage humidity: 5% to 90% RH (non-condensing)
- Power supply: USB-C™
- Length of USB-C™ connection cable (host): 15 cm
- Dimensions: L 11 x W 2.3 x 1.6 cm
- Weight: 50 g
- Color: Gray
- Not all USB-C™ ports support all functions of the USB Type-C™ standard. Make sure that your notebook's USB-C™ port supports the DisplayPort Alternate Mode (DP Alt Mode).

4.0 PACKAGE CONTENTS

Before attempting to use this unit, please check the packaging and make sure the following items are contained in the shipping carton:

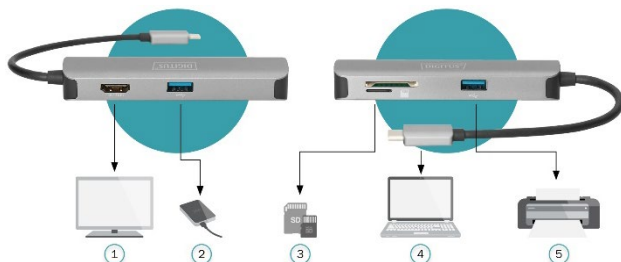
- 1 x USB-C™ Dock, 5 Port
- 1 x QIG

5.0 CONNECTOR DESCRIPTION



- 1) **HDMI® Out**
Connect this port to an HDMI® display to reproduce your content on a large monitor
- 2) **USB 3.0**
Connect this port to additional peripheral equipment
- 3) **SD / microSD**
SD and MicroSD card readers can work simultaneously
- 4) **USB Type-C™**
Connection to source device

7.0 EXAMPLE OF APPLICATION



- 1 HDMI® Display
- 2 External HDD
- 3 Memory Cards

- 4 HDMI® Source (Notebook)
- 5 Printer

Hereby ASSMANN Electronic GmbH declares that the Declaration of Conformity is part of the shipping content.

If the Declaration of Conformity is missing, you can request it by post under the below mentioned manufacturer address.

www.assmann.com

Assmann Electronic GmbH

Auf dem Schüffel 3

58513 Lüdenscheid

Germany

