



USB-C™ DOCKING STATION WITH WIRELESS VIDEO EXTENDER, 8 PORT



User Manual

DA-70890

Introduction

The two-part DIGITUS® docking station transmits Full HD video signals to distances of up to 10 m. These video signals can be displayed on the HDMI® and VGA connection in parallel. Additionally, audio signals can be picked up via the existing 3.5 mm jack socket because a VGA cable cannot transmit any audio signals.

The transmitter and receiver unit elegantly merge into one unit thanks to the integrated magnetic mount. When the connection is terminated, the docking station can be used as a video extender.

The transmitter unit can be used within a 10-m radius of a notebook, tablet or smartphone and extends your device by two graphic interfaces, two USB A ports, one SD / MicroSD card reader, as well as one audio output.

Periphery devices such as a mouse, keyboard, printer or USB sticks can be connected to the two USB A ports. The two memory card readers can be equipped with up to 2 TB.

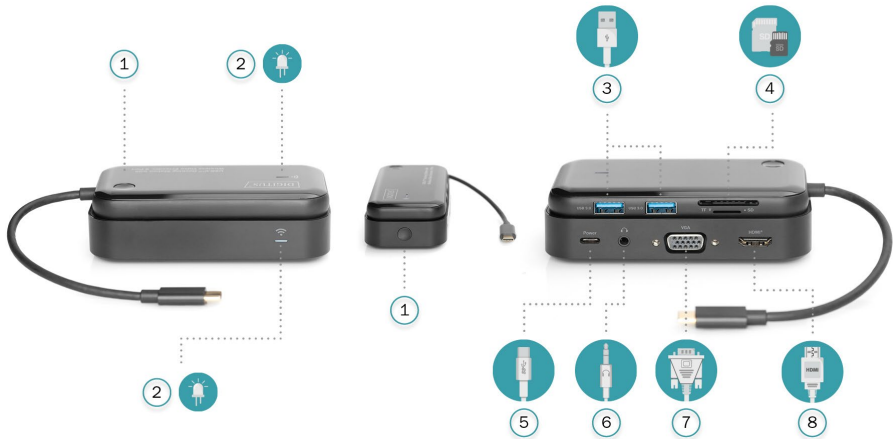
The 8-in-2 DIGITUS® docking station is the perfect solution for bridging small distances in offices or conference rooms with the most important interfaces for SOHO applications.

Important Safety Notice

Please read below safety instructions carefully before installation and operation:

1. Observe all warnings and notes regarding this device.
2. Do not expose the device to rain, moisture, vapors and liquids.
3. Do not insert any objects into the device.
4. Never attempt to repair the device yourself or open the housing. Danger of an electric shock!
5. Ensure adequate ventilation to prevent overheating damage.
6. Turn off the power supply and make sure the immediate surroundings are safe before installation.
7. During a thunderstorm, there is a risk of lightning strike and overvoltage damage to connected electrical devices.
8. Do not install this device during a thunderstorm.
9. Disconnect the device from the connected electrical devices during a thunderstorm.
10. The device is intended for indoor use only.
11. If the device needs repair, bring it to a specialist dealer.
12. Dust, moisture, vapors, and harsh detergents or solvents can damage the device.
13. Disconnect the device from the power supply and connected devices before cleaning.
14. Use a lint -free cloth to clean the device.

Structure Diagram



Transmitter

- ①. **Function Key**
 - Single click: stop /Restart video display
 - Long press 5s: Enter pairing mode
 - Long press 10s: Factory reset
- ②. **LED indicator**
- ③. **USB 3.0**
- ④. **SD&TF card readers**

Receiver

- ①. **Function Key**
 - Long press 5s: Enter pairing mode
- ⑤. **USB-C™ (Power supply to receiver)**
- ⑥. **3.5mm Audio**
- ⑦. **VGA**
- ⑧. **HDMI®**

Features

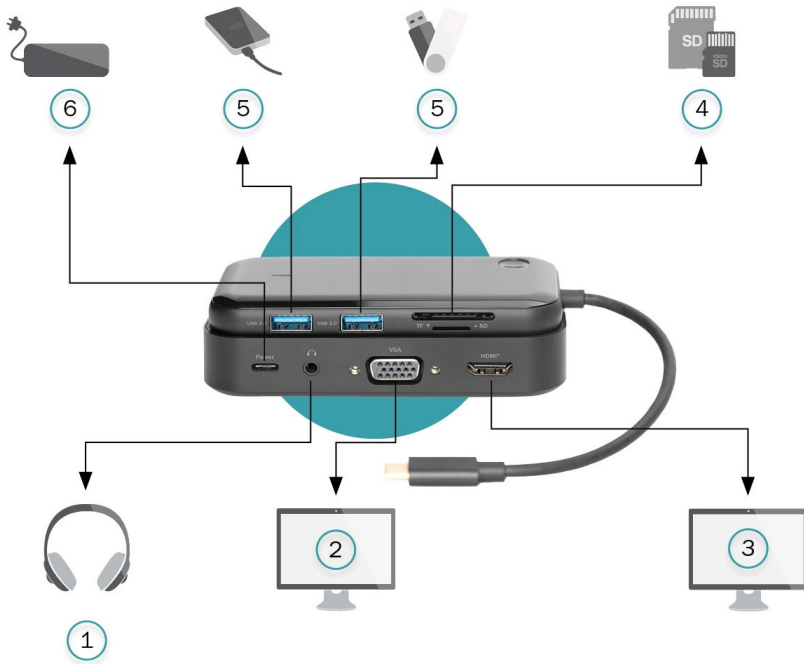
Transmitter

1. **USB 3.0**
 - 5Gb/s data transfer, 5V/0.9A@4.5W
2. **SD/TF Card Reader**
 - Read: 50 - 104MB/s;
 - Write: 30 - 40MB/s ; affected by card's quality
3. **WiFi supports wireless dual frequency**
4. **Protocol standard 802.11a/b/g/n/ac**

Receiver

1. **HDMI**
 - 1920x1080P/60Hz
2. **USB-C™**
 - Power supply to the receiver, 5V/2A@10W
3. **VGA: 1920X1080P/60Hz**
4. **3.5mm Audio**
 - Support max transmission distance 10 meters
 - No need any settings
 - Plug and Play, Mirror directly HDMI and VGA can work at the same time
 - Support stop/restart the video display by clicking a button

Connection



Receiver

- ①. Audio
- ②. VGA Display
- ③. HDMI® Display

Transmitter

- ④. SD/ Micro SD
- ⑤. HDD & USB Stick
- ⑥. Power Adapter

Connectivity

Transmitter Connection

1. Connect the transmitter to mobiles/tablets/laptops (USB-C™ devices should support video output)
2. USB 3.0 : Data transfer
3. Card readers : Data transfer

Receiver Connection

1. Connect the receiver to the monitors with HDMI or VGA cables
2. Supply power delivery to the receiver via USB-C™ port
3. It takes around 10 seconds to display video automatically after connecting

Features

- 2-part docking station consists of transmitter and receiver unit
- Transmitter unit: 1 x USB-C™ (Host), 2 x USB A (USB 3.0, 5 Gbps), 1 x card reader (SD/MicroSD)
- Receiver unit: 1 x HDMI™, 1 x VGA, 1 x USB-C™ (Power), 1 x Audio (3.5 mm)
- Audio support for VGA connection (3.5 mm jack socket)
- Video transmission of up to 10m (free field of vision)
- Clone your desktop on up to 2 external displays
- Extend your desktop to 1 external display - (HDMI / VGA or HDMI & VGA cloned)
- Plug and Play - no driver installation required
- Supported operating systems: Windows 10/8/7, macOS® X 10.6 or higher, iPadOS®, Android 6.0 or higher, Google Chrome OS, Linux 2.6.14 or higher



Note

1. Not all USB-C™ ports support all functions of the USB Type-C™ standard. Make sure that your notebook's USB-C™ port supports the DisplayPort Alternate Mode (DP Alt Mode) as well as USB Power Delivery (PD).

FAQ

a. Why is there no video output?

1. Please check the connection is good
2. Please use standard HDMI or VGA cable
3. The automatic screen casting link will take about 10 seconds, please wait patiently
4. Mobile phone/computer supports video output
5. Please make sure the HDMI or VGA monitor has selected the correct input source
6. The product is well-matched in factory. If it's still not working, please try to repair

b. Why is there no audio output from HDMI port?

1. Please make sure that there is audio output function on the monitor
2. Please set the external monitor as default audio output device

c. How to fix problems?

1. Supply power to the receiver and press 5 seconds to enter pairing mode, then the screen will show "wait for pairing"
2. After connecting the transmitter to devices for 20 seconds, press 5 seconds to enter pairing mode
3. It takes 5-15 seconds to match automatically when transmitter and receiver enter pairing mode simultaneously
4. The screen will switch to normal video display after pairing's succeed

Package content

- USB-C™ Dockingstation with Wireless Video Extender (Transmitter + Receiver)
- USB-C™ on USB A connection cable (power supply receiver)
- User manual

Frequency range and maximum transmission power

Frequency range:	Wi-Fi (HT80) 5.1 GHz- 5.8 GHz
Transmission power:	max. 14.5 dBm
SW (software) version:	V 1.3e
HW (hardware) version:	V 1.0

Hereby Assmann Electronic GmbH, declares that the Declaration of Conformity is part of the shipping content. If the Declaration of Conformity is missing, you can request it by post under the below mentioned manufacturer address.

www.assmann.com
Assmann Electronic GmbH
Auf dem Schüffel 3
58513 Lüdenscheid
Germany

