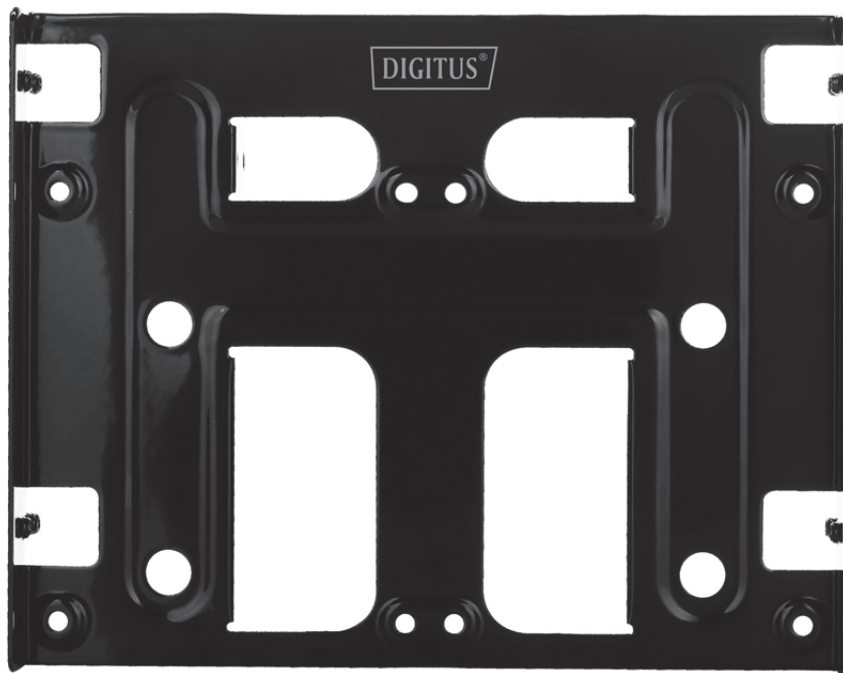




Quad SSD/ HDD Mounting Frame, 5.25"



Quick Installation Guide DA-70443

The Digitus Quad SSD/HDD mounting frame, 5.25" makes it possible for you to install up to four 2.5" SSDs/HDDs or two 2.5" SSDs/HDDs + one 3.5" HDD/SSD. It is suitable for internal mounting in 5.25" standard mounting bays. Thanks to its simple handling and high quality, installation is very easy. Screws and protective rubber for the SSDs/HDDs are included.

Technical Features

- Suitable for the installation of up to 4x 2.5" SSDs/HDDs or 2x 2.5" + 1x 3.5" SSDs/HDDs
- Suitable for 5.25" standard mounting bays
- Suitable for 2.5" or 3.5" SSDs or hard disks
- Decoupled mounting of a 3.5" HDD
- Simple installation
- Includes 26 screws as well as 4 decouplers
- Material: metal
- Dimensions: L 11.7 x B 14.7 x H 3.6 cm
- Weight: 150 g

Package Content

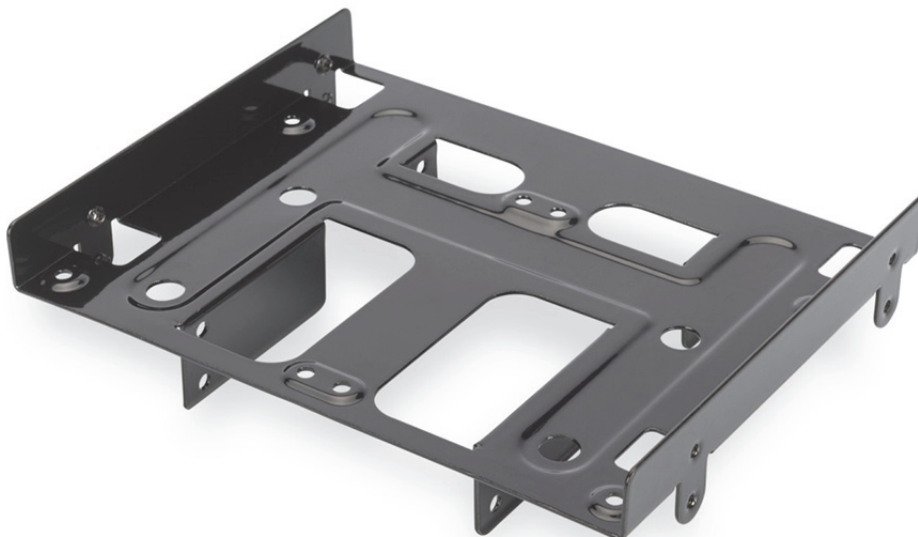
- Quad SSD/HDD Mounting Frame, 5.25"
- Includes 26 screws as well as 4 decouplers
- Manual

View from above

Mounting bay for one 3.5" HDD

B-Decoupled attachment for one 3.5" HDD

C-Mounting frame attachment



The mounting frame allows for the simultaneous installation of up to four 2.5" HDDs or SSDs
Note: Related to their design, mechanical 2.5" HDDs shall not be installed headfirst.

Installation Step 1:

1. Place two 2.5" SSDs/HDDs into the mounting bay on the top side of the frame.
2. Screw both SSDs/HDDs to the frame from underneath using the included fine thread screws.
3. Place two 2.5" SSDs/HDDs into the frame on the bottom side of the mounting frame.
4. Screw both SSDs/HDDs to the frame from both sides while using the included fine thread screws.



Alternatively, two 2.5" SSDs/HDDs, can be mounted to the mounting frame simultaneously at which the 3.5" HDD is mounted decoupled:



- Place one 3.5" HDD into the mounting bay on the top side of the mounting frame. Screw the HDD to it from underneath through the decouplers while using the included coarse thread screws.
- Place two 2.5" SSDs/HDDs into the mounting bay on the lower side of the frame.
- Screw both SSDs/HDDs to it from both sides using the included finethread screws.

Installation Step 2:

1. Open the PC case
2. Slide the Quad mounting frame with pre-installed SSDs/HDDs into a 5.25" mounting bay of the PC referring to the installation guidelines included with the case.
3. Screw the frame to the case using the included fine thread screws. Refer to the installation guidelines included with the case.

Hereby ASSMANN Electronic GmbH, declares that this device is in compliance with the requirements of Directive 2011/65/EU for RoHS compliance. The complete declaration of conformity can be requested by post under the below mentioned manufacturer address.

www.assmann.com
Assmann Electronic GmbH
Auf dem Schüffel 3
58513 Lüdenscheid
Germany

