



USB-C™ Serial Adapter, USB-C™ - RS485



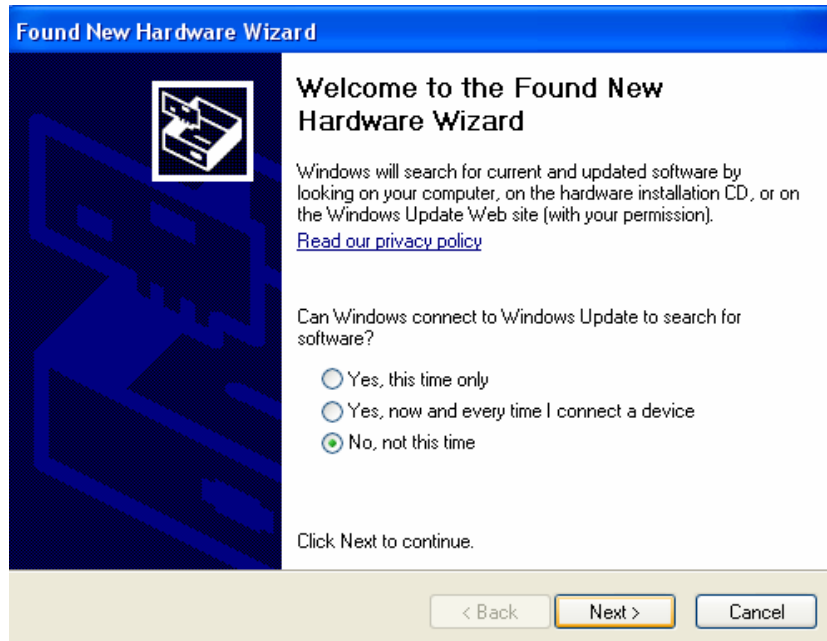
User Manual

DA-70168

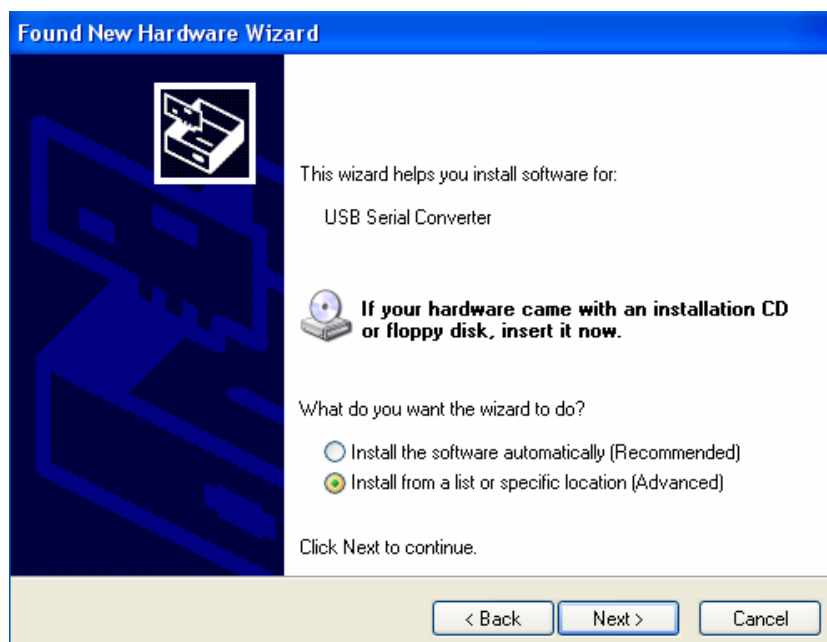
- Step 1: Insert CD Driver of this product to the CD-ROM
- Step 2: Connect the device to a spare USB port on your PC ,
and find new hardware wizard, please refer to the following chart:



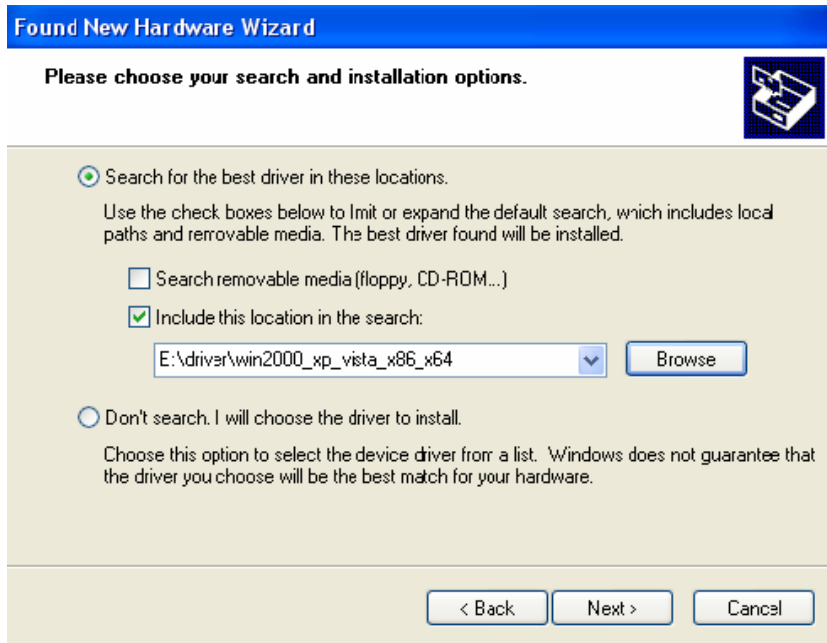
- Step 3: Select "No, not this time", click "Next" to continue



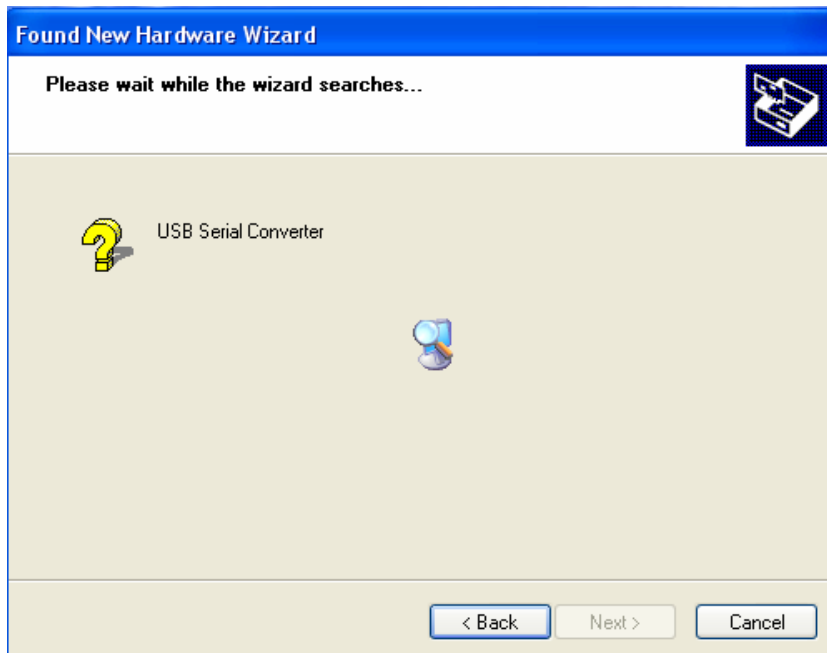
- Step 4: Select "Install from a list or specific location(Advanced)", click "Next" to continue.



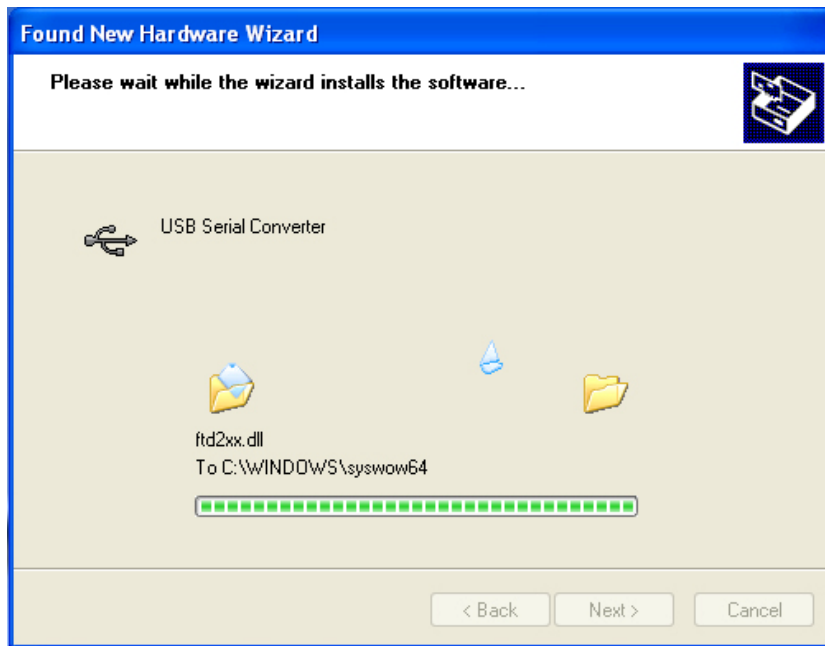
Step 5: Select "Include this Location in the search ", click "Browse" and choose the corresponding OS driver in CD. Click "Next" to continue



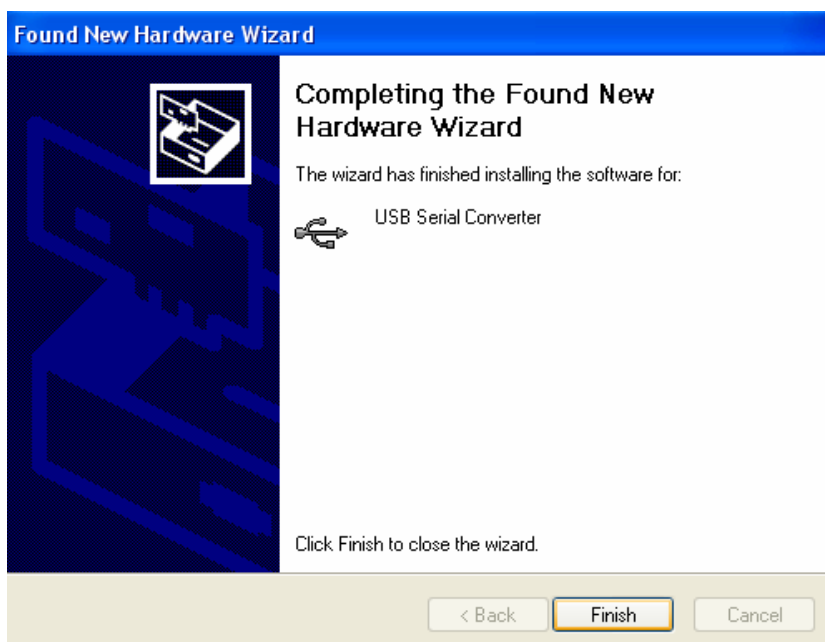
Step 6: Auto search for the corresponding driver in the CD



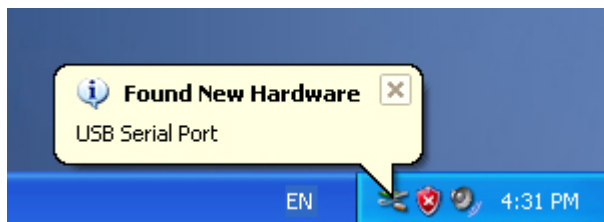
Step 7: The wizard has started installation and copy file to your system



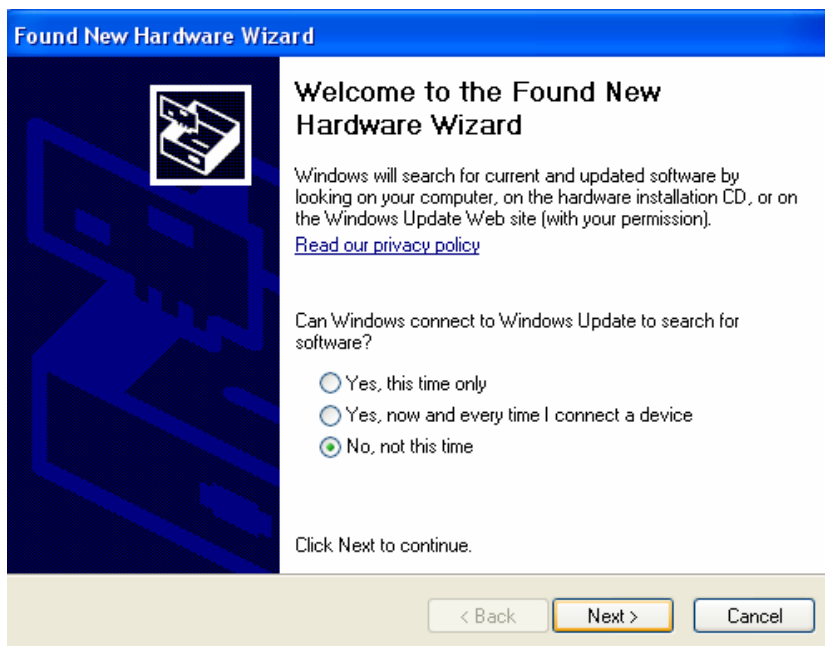
Step 8: Click "Finish" to close the wizard.



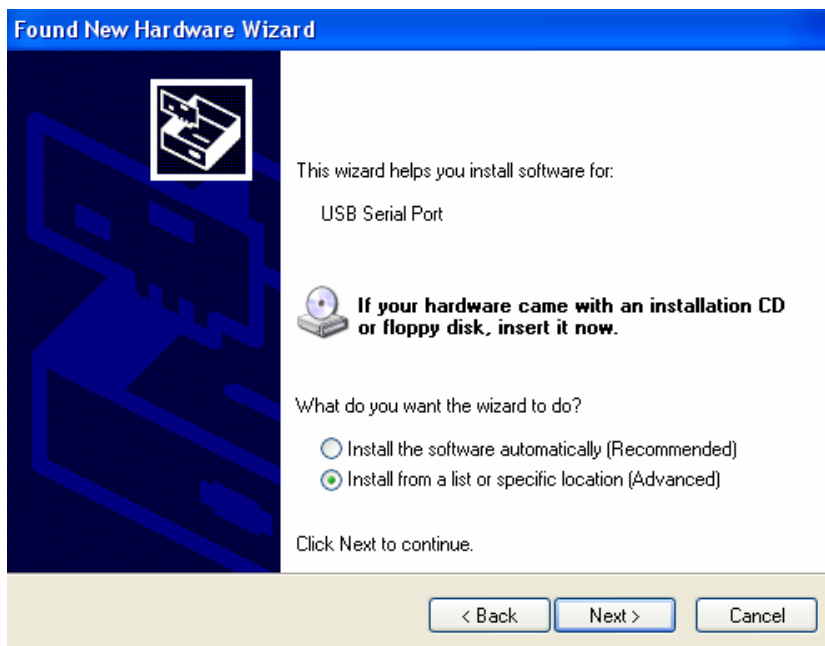
Step 9: Find new com port.



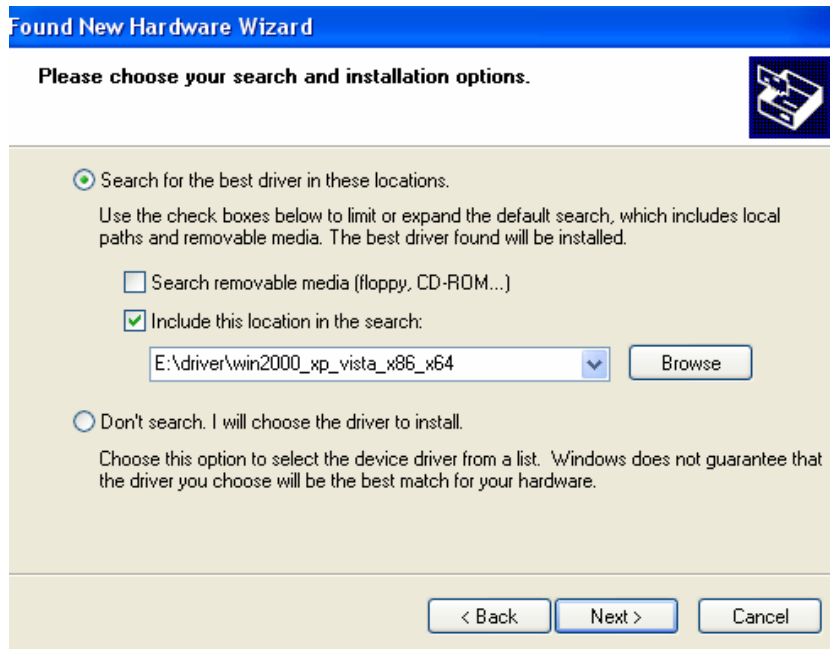
Step 10: Select "No, not this time", click "Next" to continue.



Step 11: Select "Install from a list or specific location(Advanced)", click "Next" to continue.



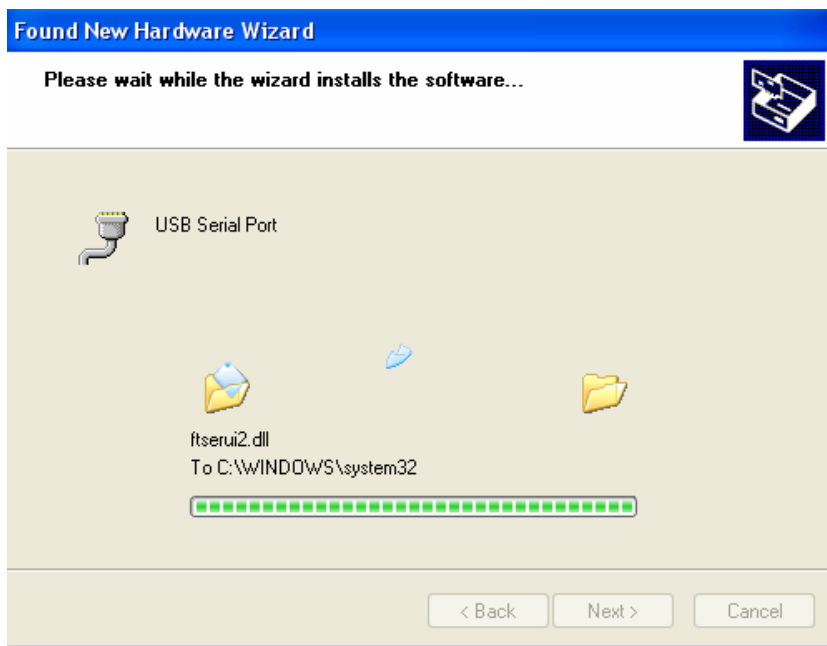
Step 12: Select "Include this Location in the search ", click "Browse" and choose the corresponding OS driver in CD. Click "Next" to continue



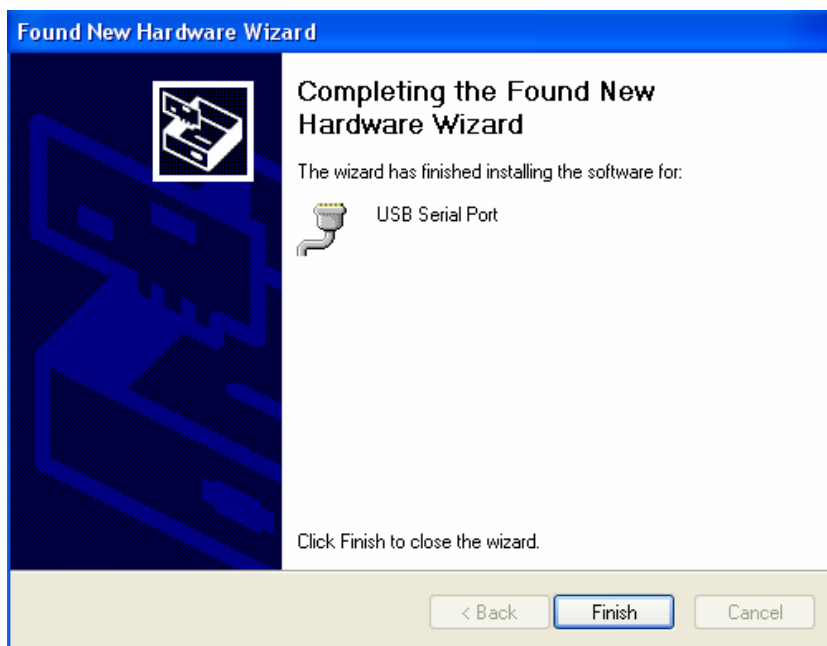
Step 13: Auto search for the corresponding driver in the CD.



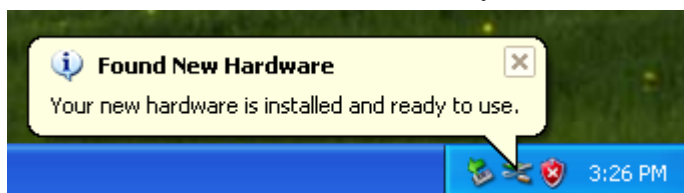
Step 14: The wizard has started installation and copy file to your system.



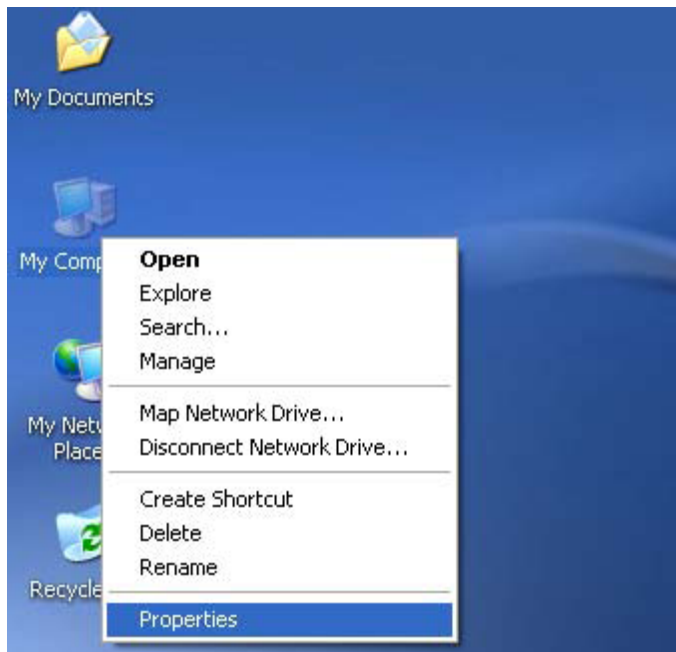
Step 15: Installation completed, click "Finish" to close the wizard.



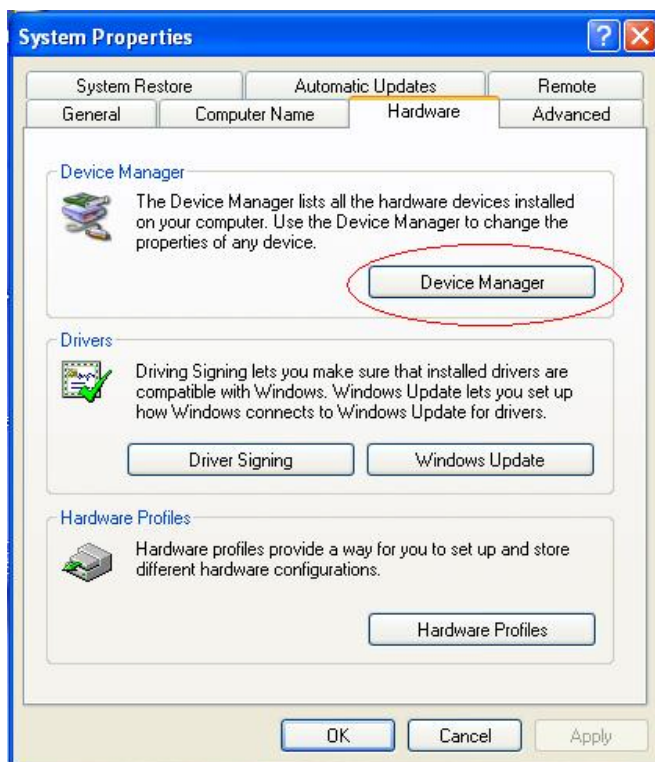
Step 16: Your new hardware is installed and ready to use.



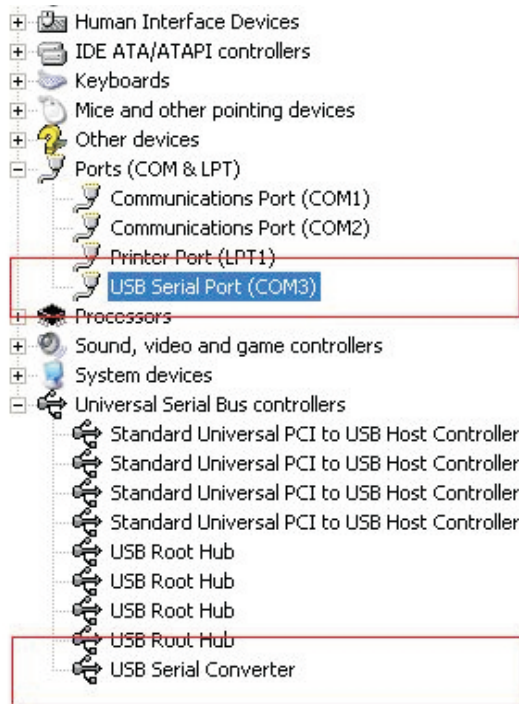
Step 17: If you want to see it, right click “ my computer”, then click “Properties”.



Step 18: Select “Device Manager” in the “Hardware” of the interface “System Properties”, click it, you can see the hardware devices installed on your computer, please refer to the following chart:



Step 19: Installation finished

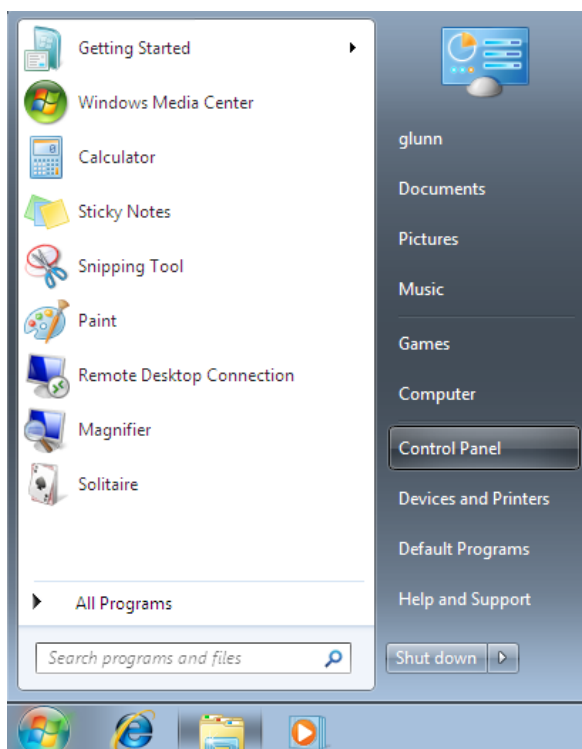


Installation Guide (For windows 7.0)

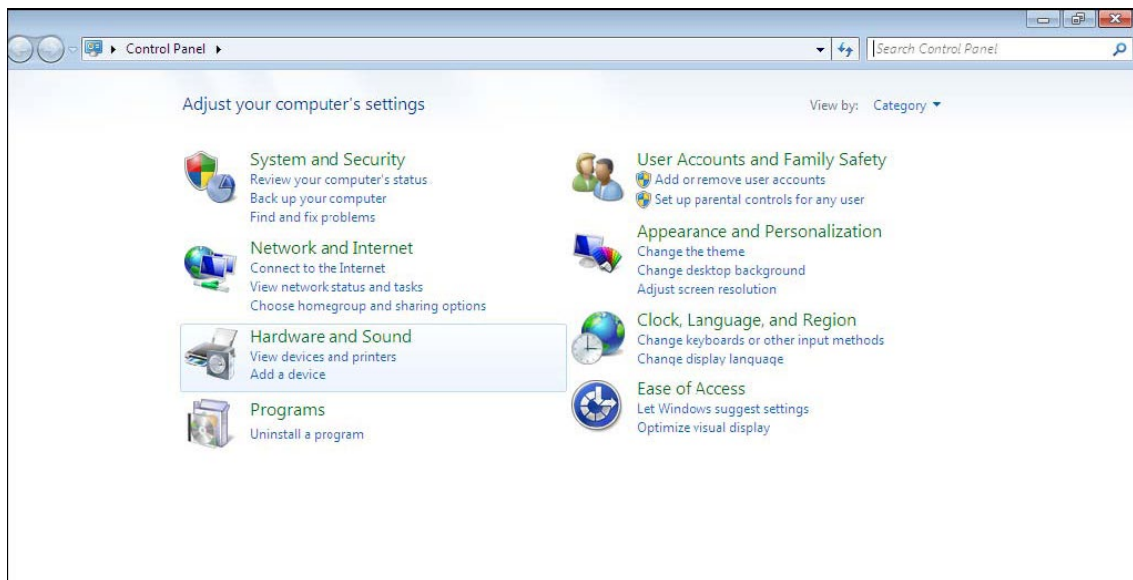
Step1: Insert CD Driver of this product to the CD-ROM

Connect the device to a spare USB port on your PC.

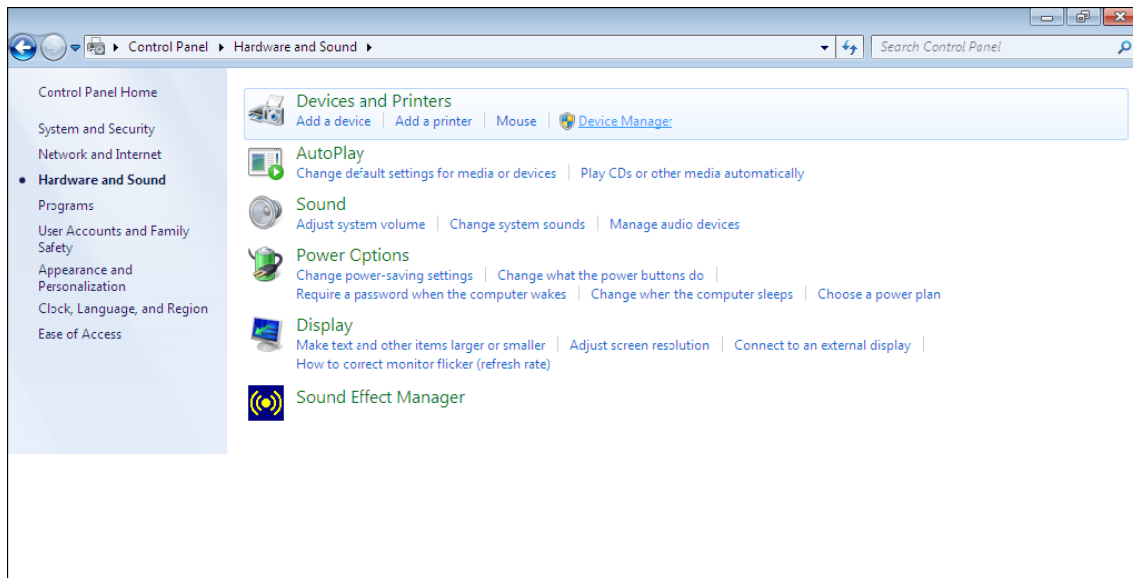
Step2: If there is an available Internet connection, Windows 7 will silently connect to the Windows Update website and install any suitable driver it finds for the device. If the automatic installation takes place there is no need to continue with the procedure outlined below. If no suitable driver is automatically found then the following procedure should be followed. Press the Windows start button to bring up the start menu and select "**Control Panel**".



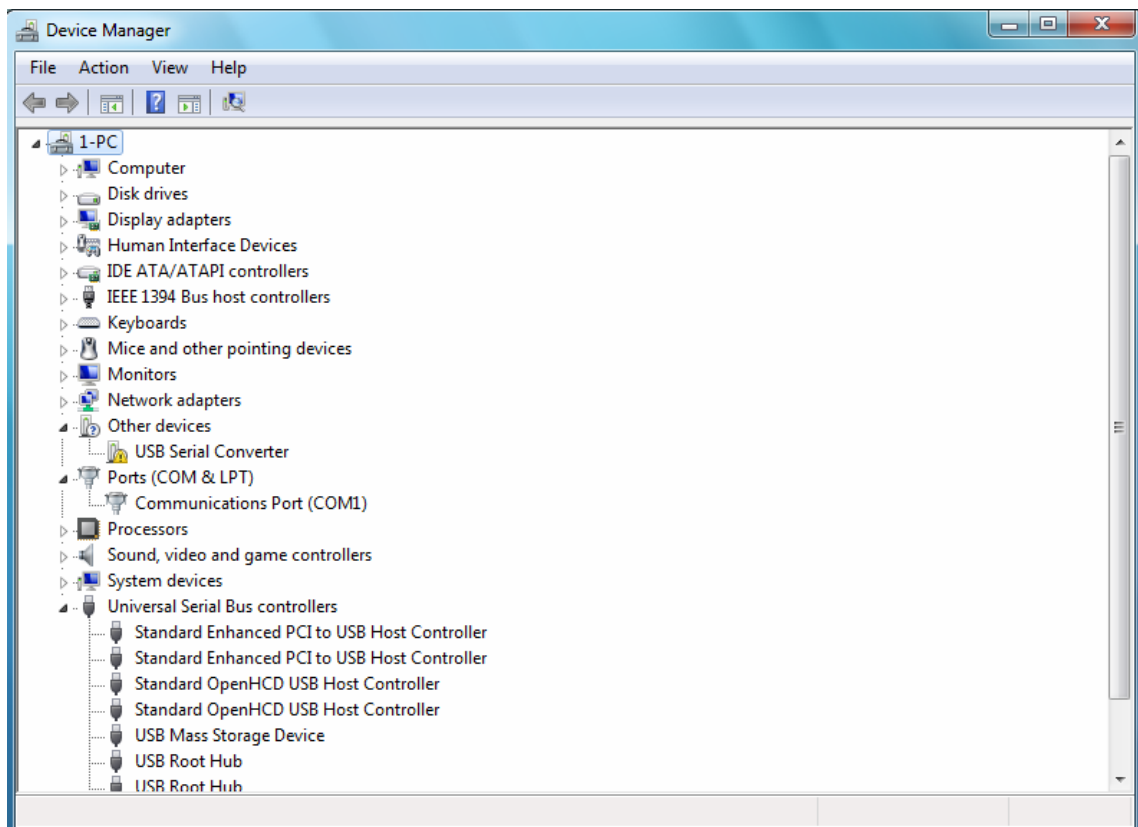
Step 3: From the Control Panel window select Hardware and Sound



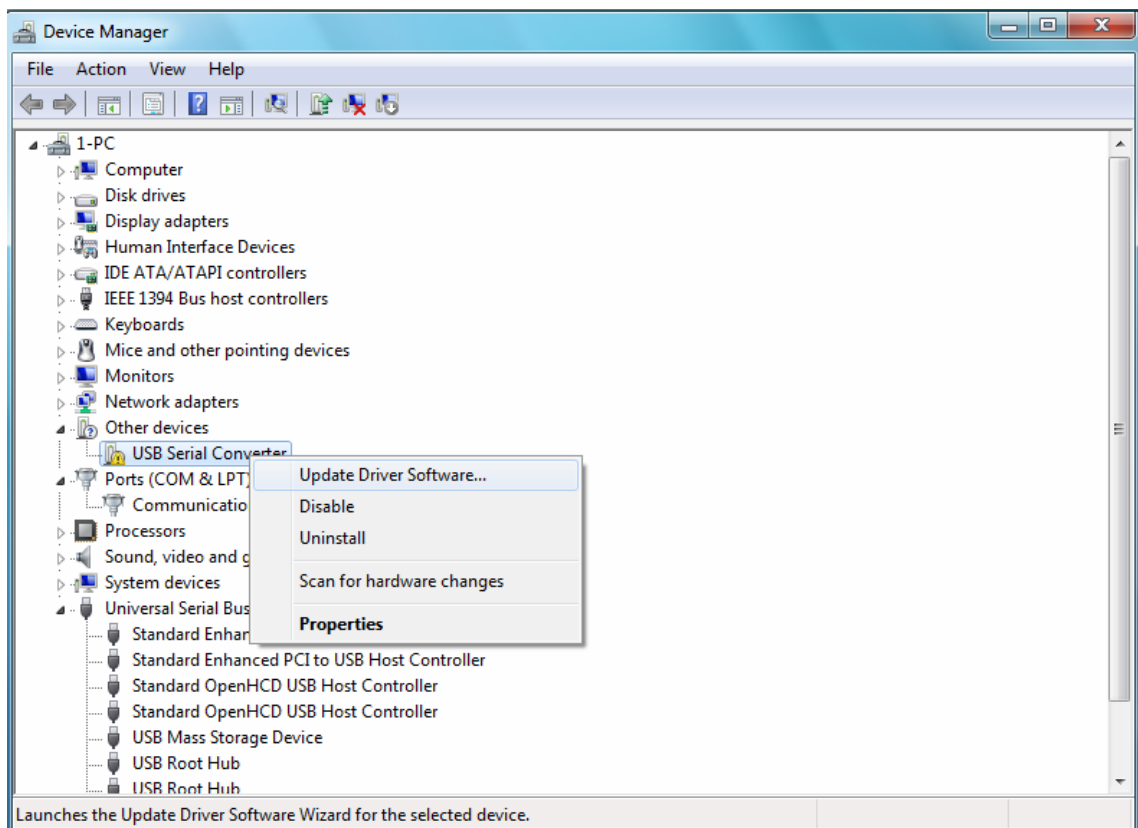
Step4: At the next screen select Device Manager:



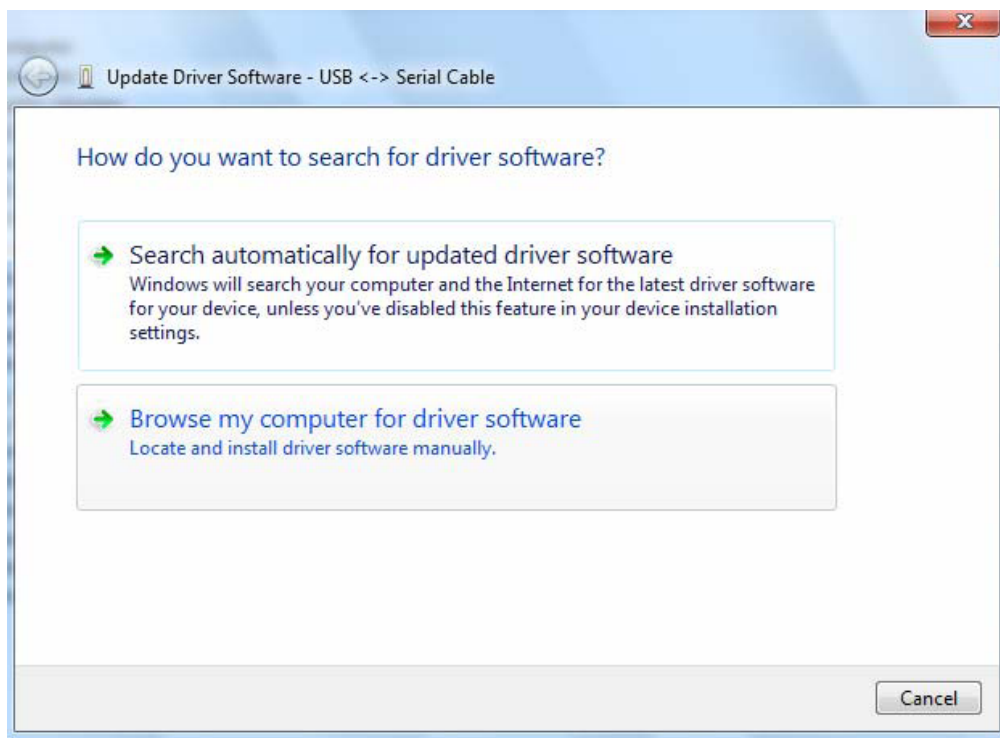
Step 5: In the Device Manager window there will be a device under Other Devices with a yellow warning symbol to indicate a problem ie no driver installed. The text next to this device will depend on the device attached. In this example the devices was “USB Serial Cable” devices.



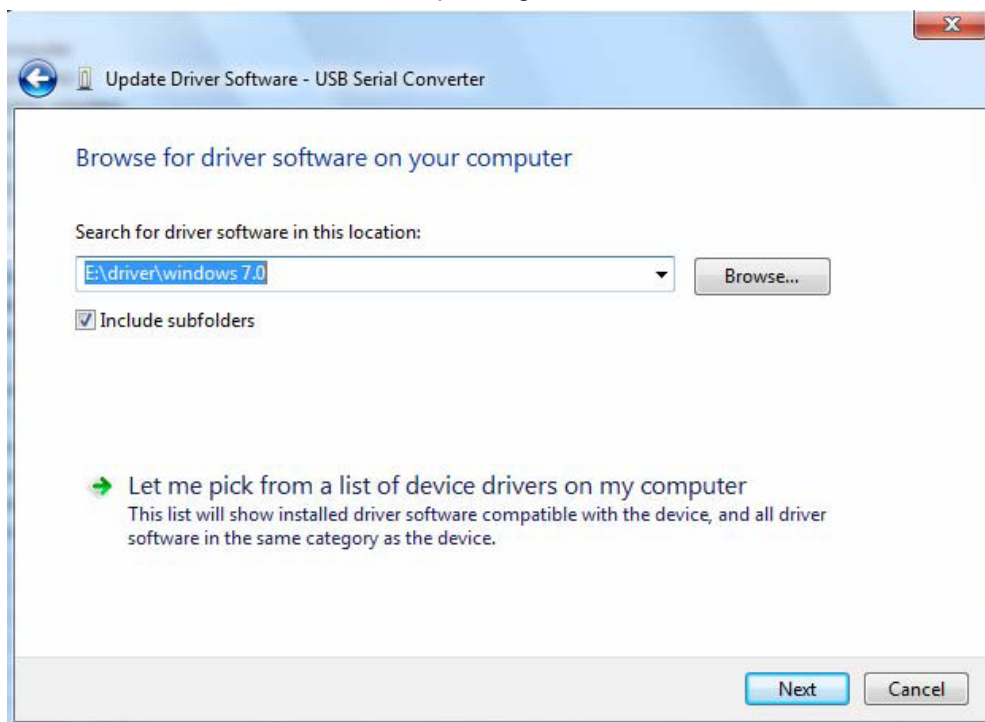
Step6: Right click on the other device to bring up a menu as shown below. From the displayed menu select “Update Driver Software...” This then displays the option for an automatic search or a manual search.



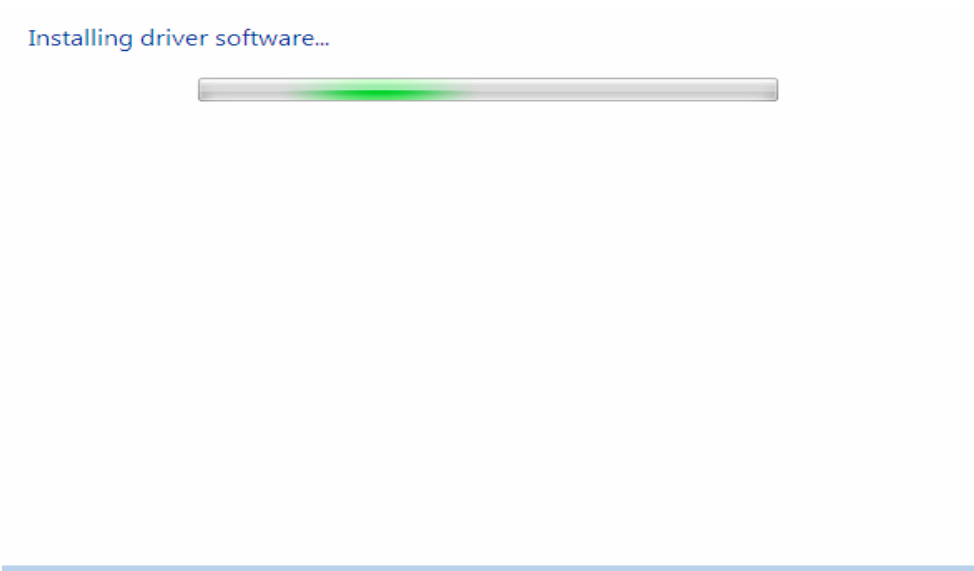
Step7: Select the second option to browse manually.



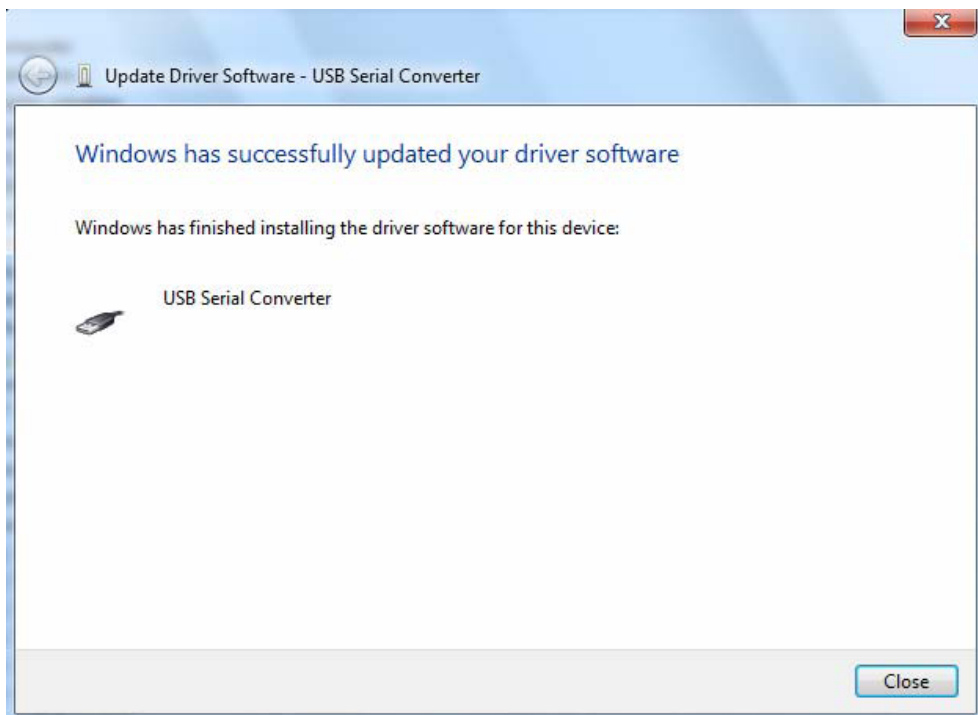
Step 8: click "Browse" and choose the corresponding OS driver in CD. Click "Next" to continue

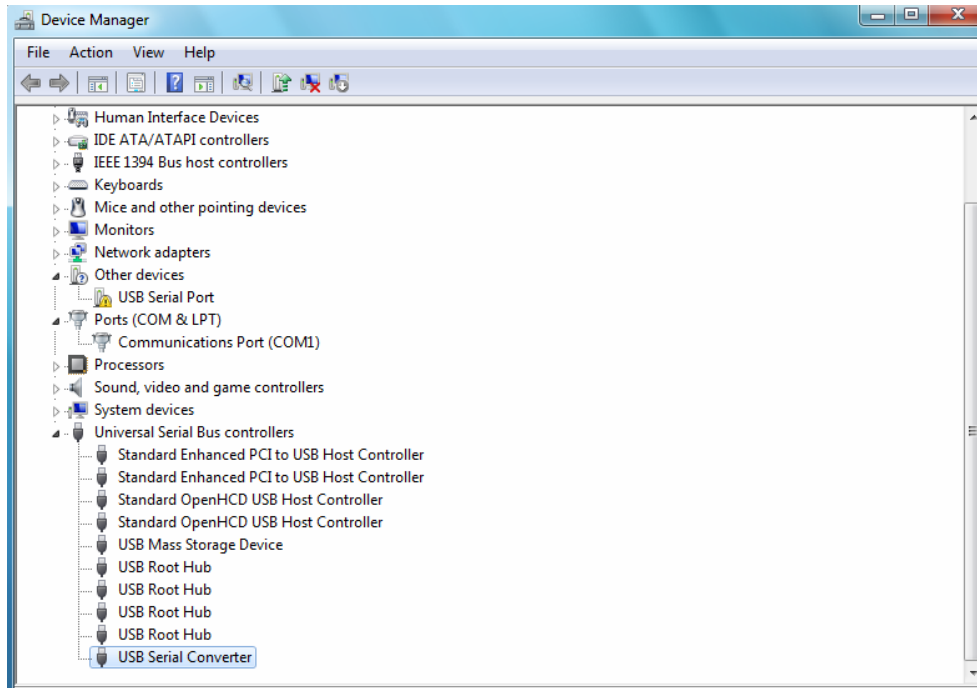


Step 9: When the installation has finished a completion screen is displayed.



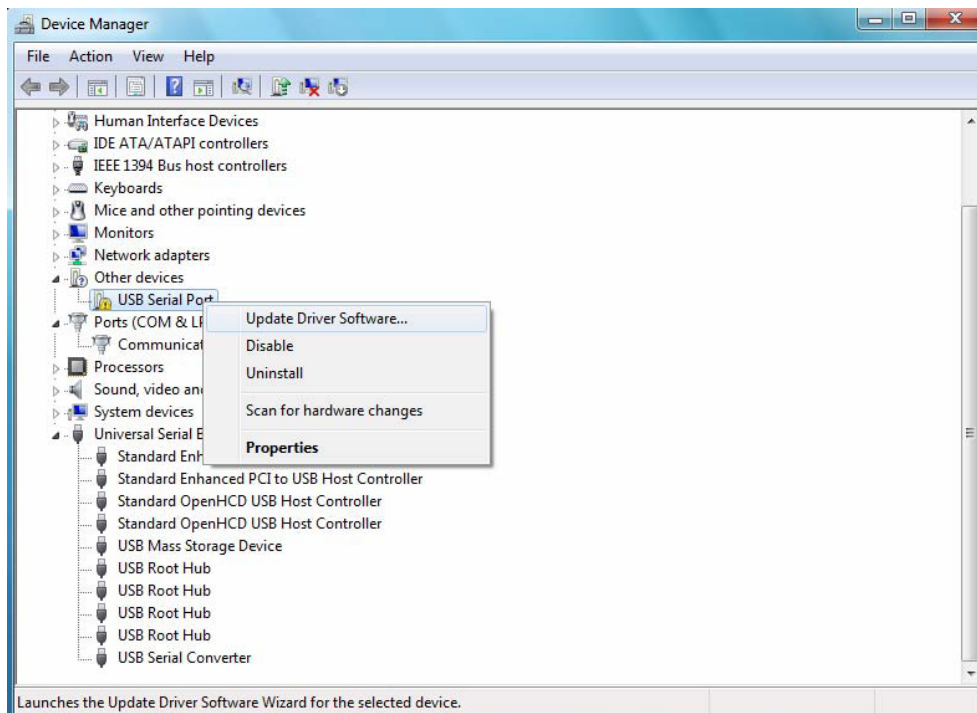
Step10: Press Close to close this window and go back to the Device Manager Window



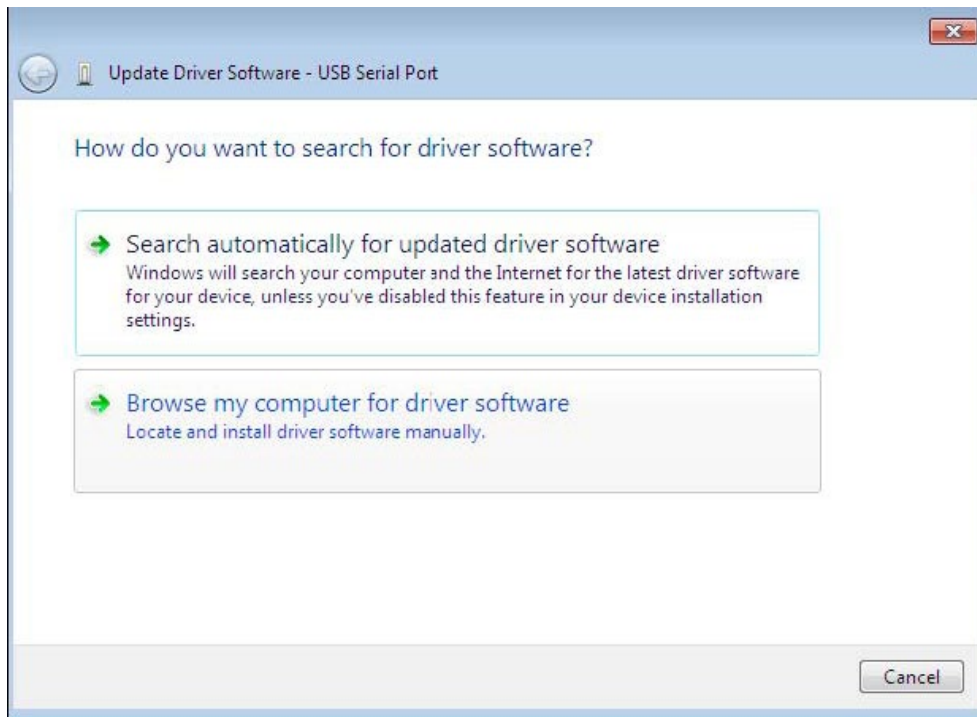


The Device Manager will still show a device under Other Devices but in addition to this there is a new entry under Universal Serial Bus Controllers indicated in the screenshot above as the USB Serial Converter. This indicates the bus layer of the driver is installed. Installing the Virtual Com Port layer of the driver is almost a repeat of the last few steps.

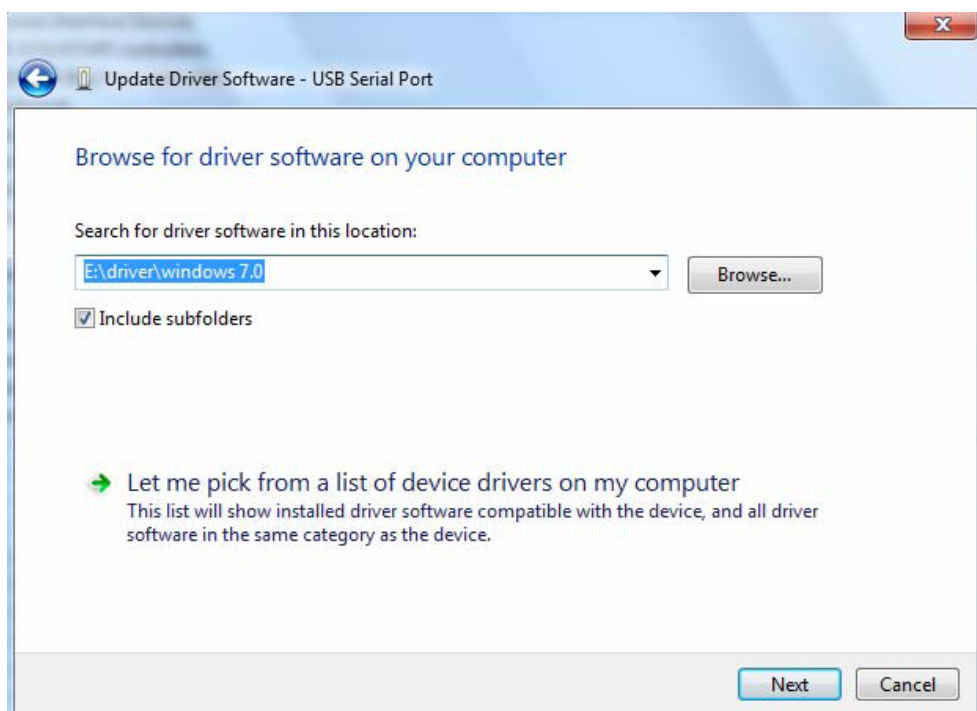
Step 11: Right click on the other device to bring up a menu as shown below. From the displayed menu select "Update Driver Software..." This then displays the option for an automatic search or a manual search.



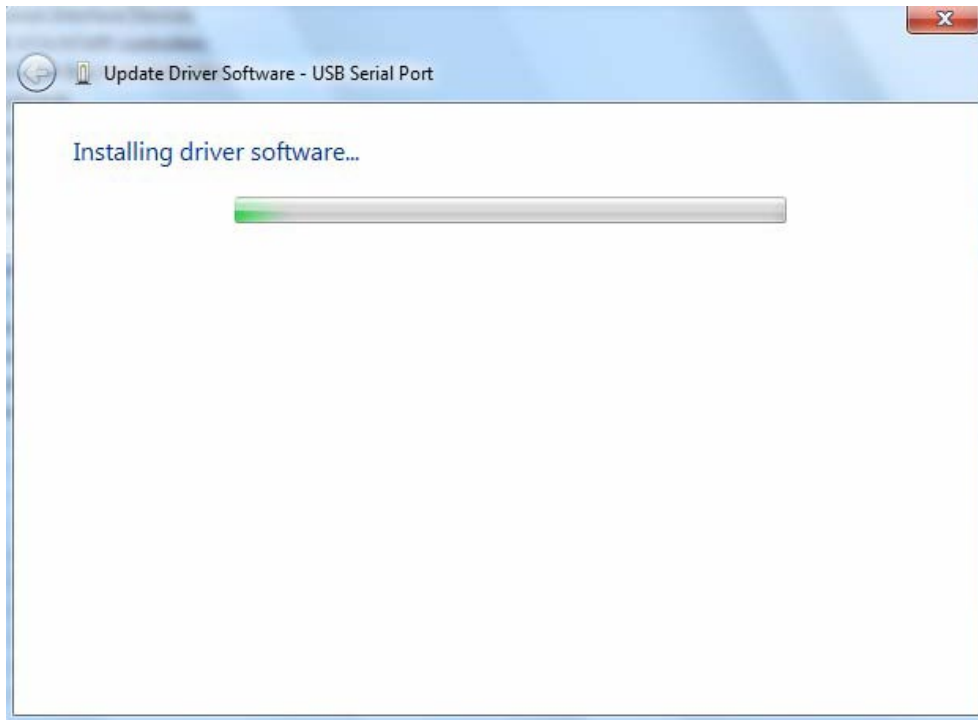
Step 12: Select the second option to browse manually.



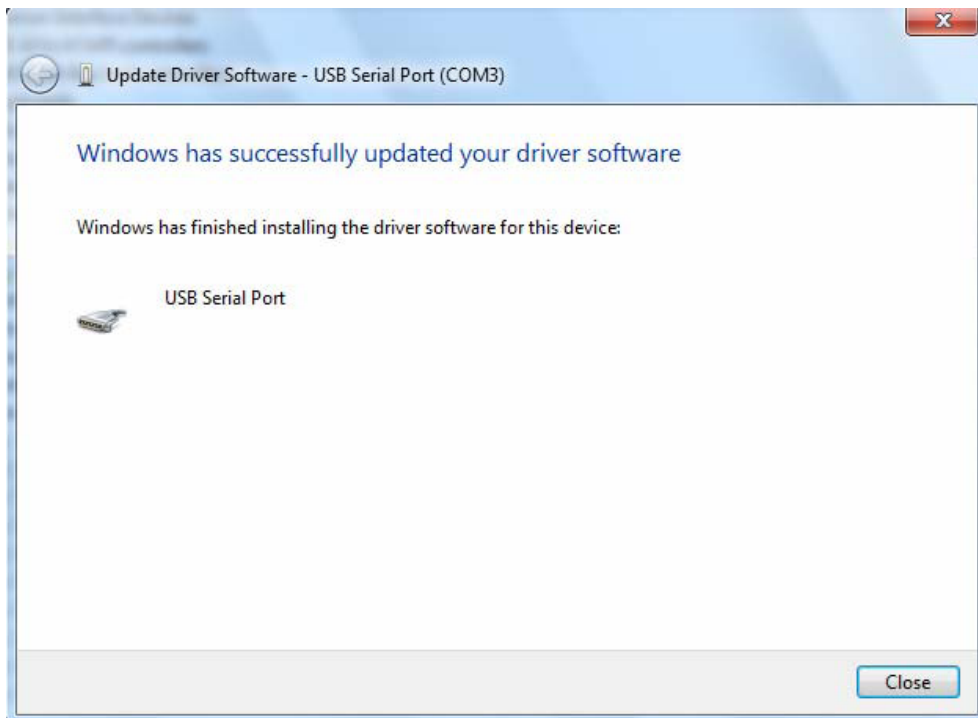
Step 13: Click "Browse" and choose the corresponding OS driver in CD. Click "Next" to continue

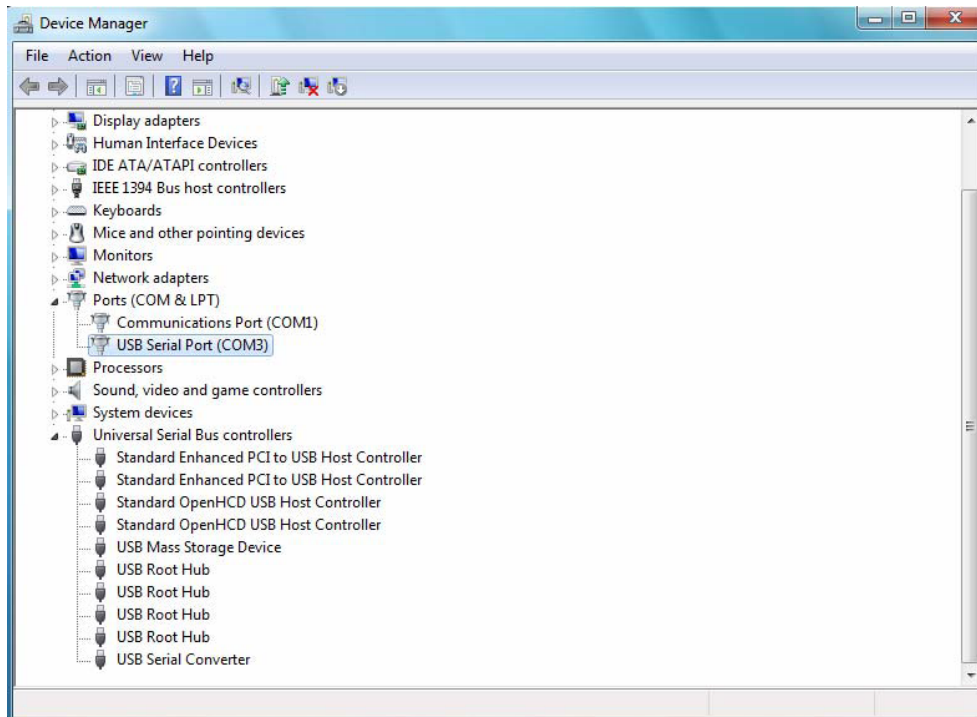


Step 14: When the installation has finished a completion screen is displayed.



Step15: Press Close to close this window and go back to the Device Manager Window.





This time the Device Manager does not have a usb <->Serial Cable entry under Other Devices but does show entries under Universal Serial Bus Controllers and Ports (COM & LPT). The above screen shot displays a correct installation. The device is now ready to use on COM3.

NOTE: *Not all devices will install to COM3. The COM port allocation is determined by the installation wizard on the basis of the next free com port as designated in the PC registry.*

Windows CE Installation Guide

The VCP drivers emulate a standard COM port. These can be communicated with in the same manner as any other COM port on the PC.

- ftdi_ser.dll - the VCP driver file
- FTDIPOINT.inf - user changeable file to allow devices with custom VID and PID combinations to be installed
- Copy all of the unzipped files to the \\Windows directory on the PDA.
- If the PDA requires a host adaptor (e .g. USB host cable, presentation pack or Compact Flash host card), make sure that it is connected and installed before proceeding.
- Connect the RS485 device to a host USB port on the PDA. This will provide a dialog box to direct Windows CE to the driver files.
- Type the full name of the VCP driver file into the dialog box as shown below. If the file name is incorrect, the driver will not be found and the device will not function.
- The device installation is now complete.



The device installation is now complete

Welcome to the Mac OS X Installation Guide

The driver is now available in disk image (.dmg) format. Run the installer by double clicking on the OX .dmg icon.



Click Continue to proceed with the installation and follow the instructions on screen.

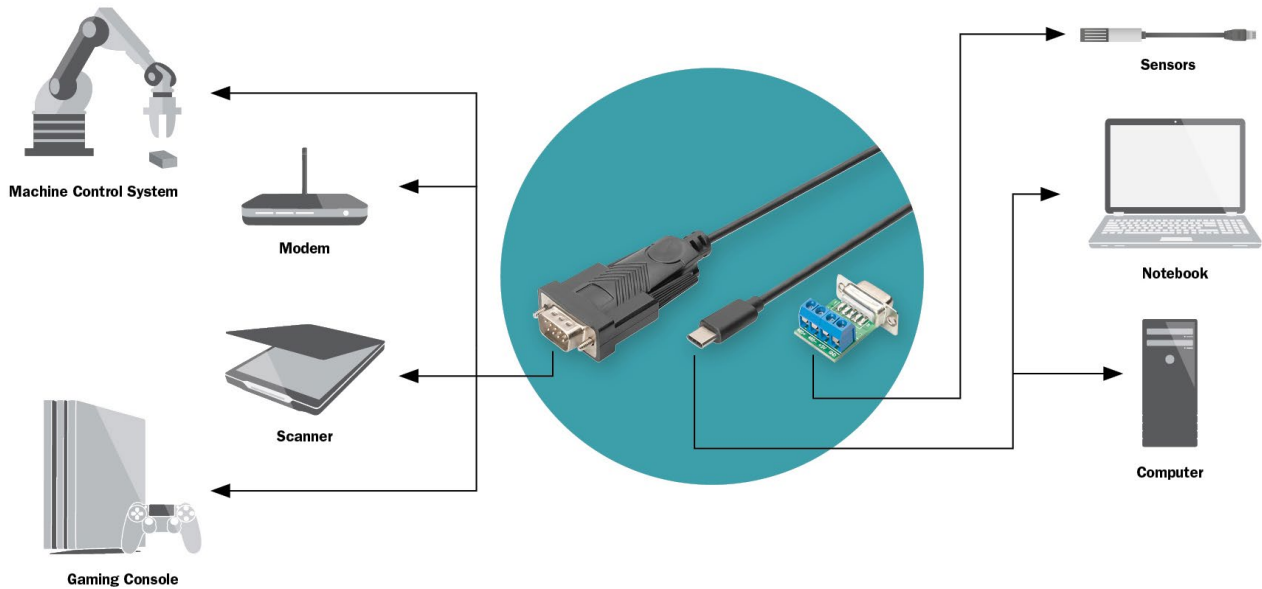
When the installation is complete, reboot the computer.



Using:

1. Power on your computer and make sure that the USB port is enabled and working properly.
2. Insert CD Driver of this product to the CD-ROM
3. Connect the device to a USB port on your PC
4. Connect the Serial device to the product
5. Please open the User Manual file, then follow the steps to install the driver.

6. Application:



English

Hereby Assmann Electronic GmbH, declares that the Declaration of Conformity is part of the shipping content. If the Declaration of Conformity is missing, you can request it by post under the below mentioned manufacturer address.

French

Par la présente, Assmann Electronic GmbH certifie que le produit contient la déclaration de conformité. Si la déclaration de conformité est manquante, vous pouvez la demander par post à l'adresse du fabricant ci-dessous:

www.assmann.com

Assmann Electronic GmbH

Auf dem Schüffel 3

58513 Lüdenscheid

Germany

