



# USB TO SERIAL CONVERTER



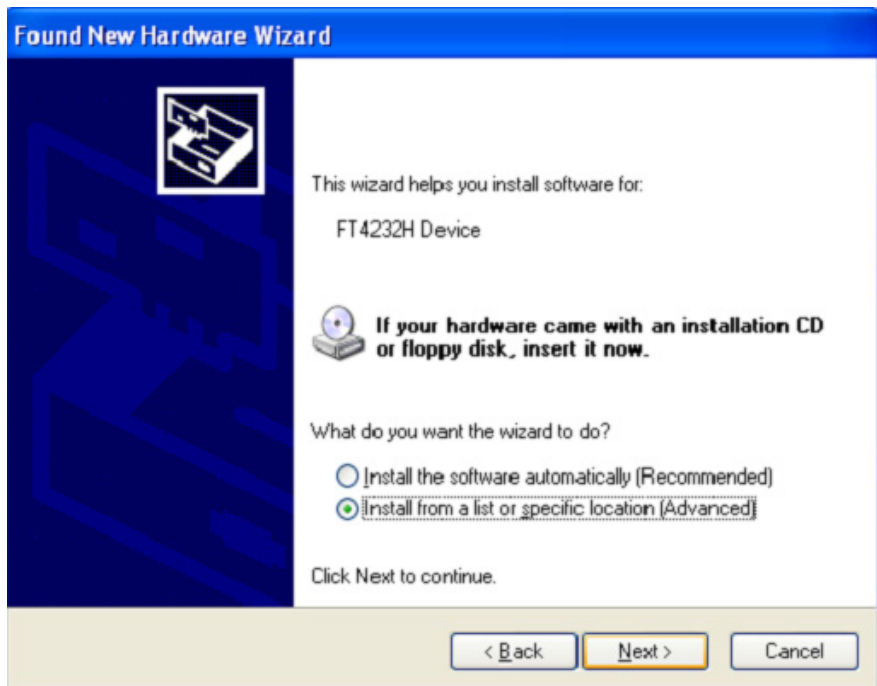
**Quick Installation Guide  
Windows 2000/XP**

**DA-70159**

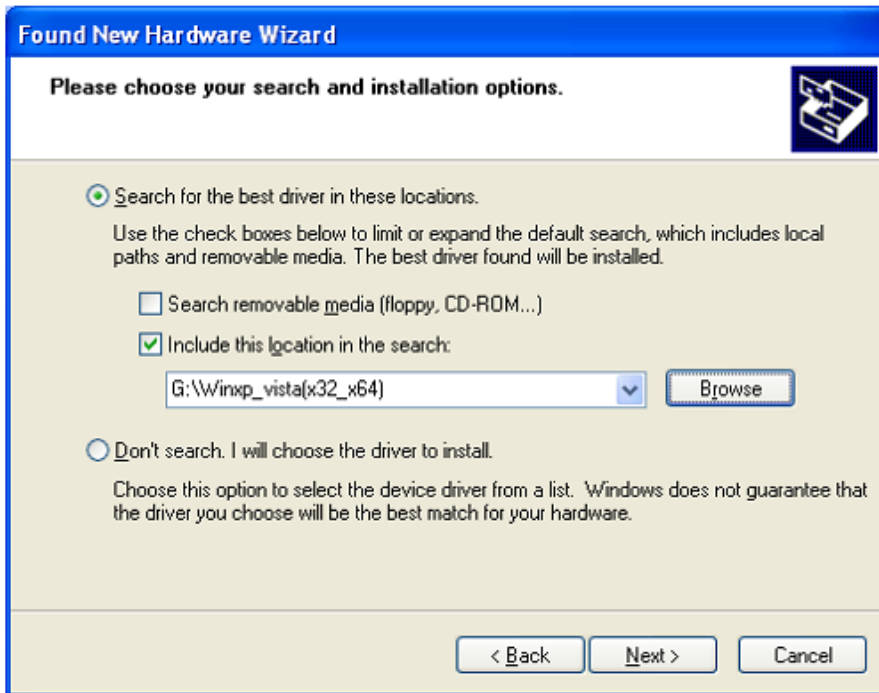
- Step 1: Insert CD Driver of this product to the CD-ROM
- Step 2: Connect the device to a spare USB port on your PC , and find new hardware wizard.
- Step 3: Select “No,not this time”, click “Next” to continue.



- Step 4: Select “Install from a list of specific location(Advanced)”,click “Next” to continue.

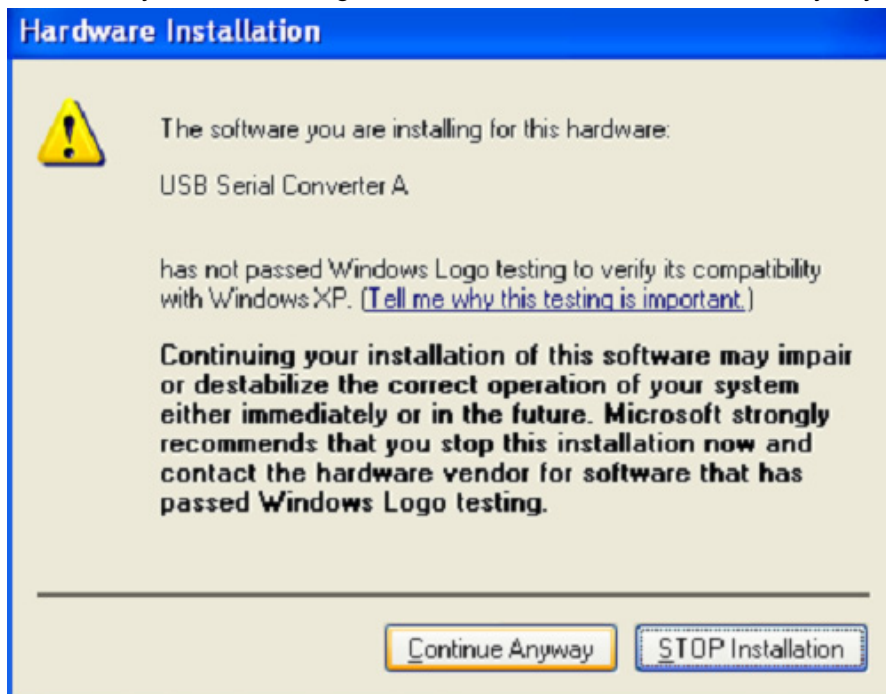


Step 5: Select "Include this location in the search", click "Browse" and choose the corresponding OS driver in CD. Click "Next" to continue

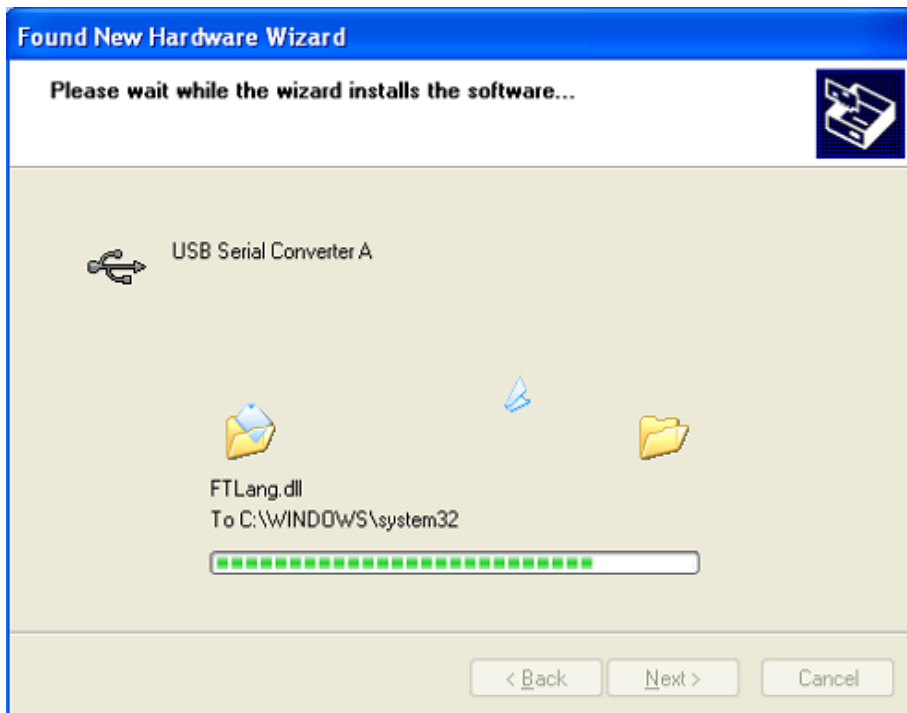


Step 6: Auto search for the corresponding driver in the CD.

Step 7: The software you are installing for this hardware, Click "Continue Anyway" to continue



Step 8: The wizard has started installation and copy file to your system



Step 9: Click "Finish" to close the wizard.

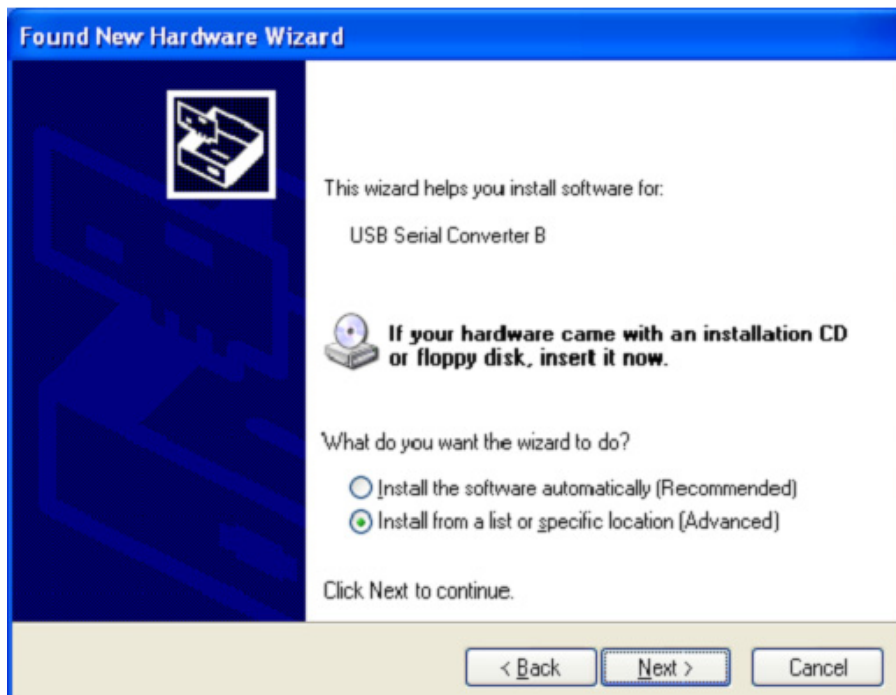


Step 10: Find new Hardware

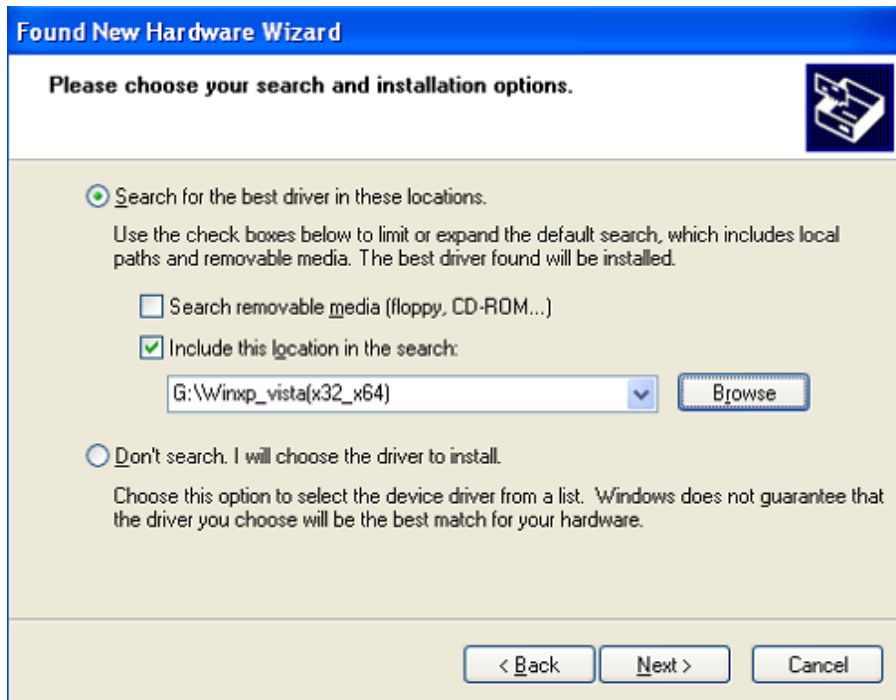
Step 11: Select “No,not this time”, click “Next” to continue.



Step 12: Select “Install from a list of specific location(Advanced)”,click “Next” to continue.



Step13: Select “Include this location in the search”, click “Browse” and choose the corresponding OS driver in CD. Click “Next” to continue



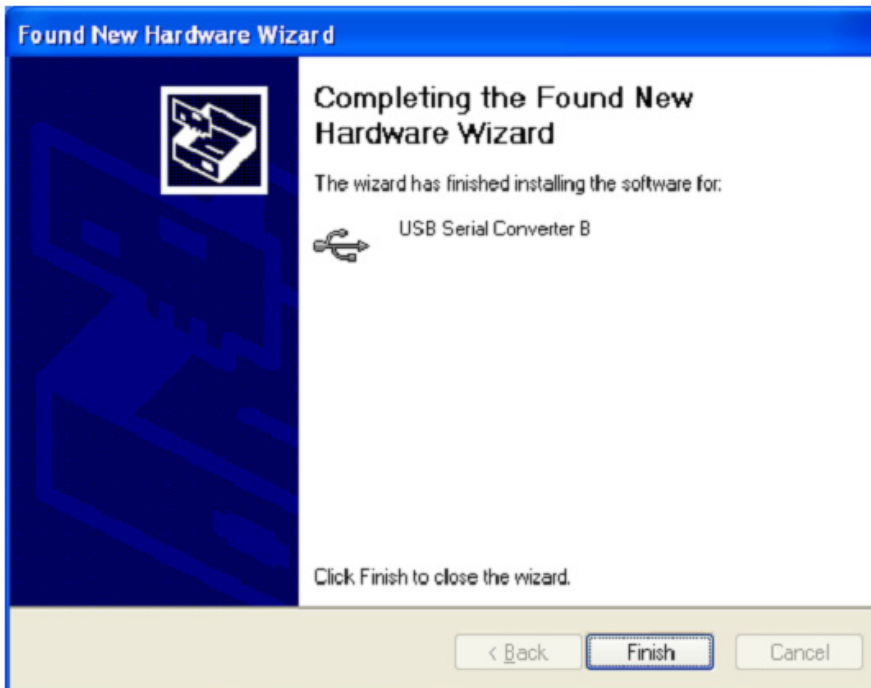
Step14: Auto search for the corresponding driver in the CD.

Step15: The software you are installing for this hardware, Click “Continue Anyway” to continue



Step 16: The wizard has started installation and copy file to your system

Step17: Click "Finish" to close the wizard.

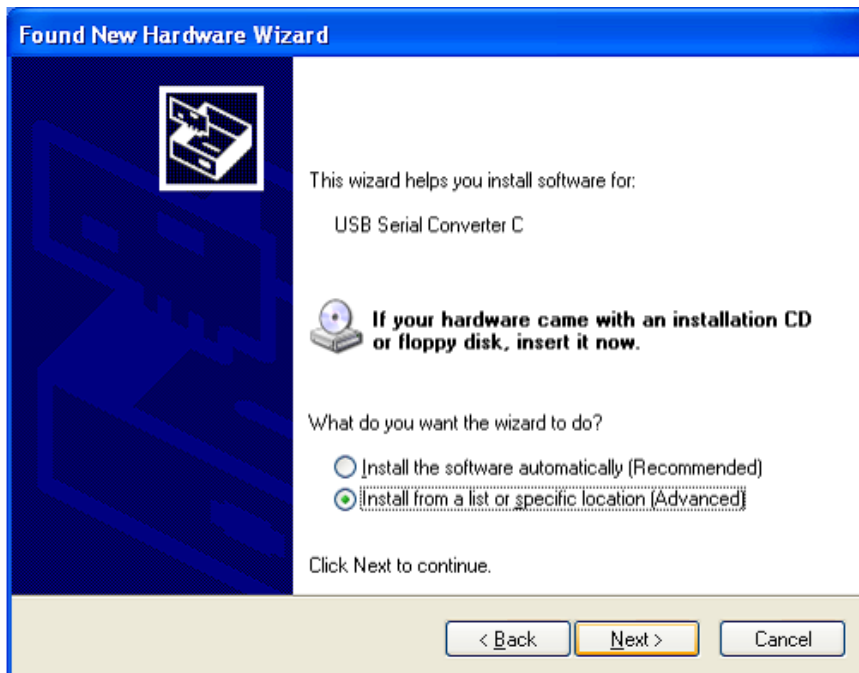


Step 18: Find new Hardware

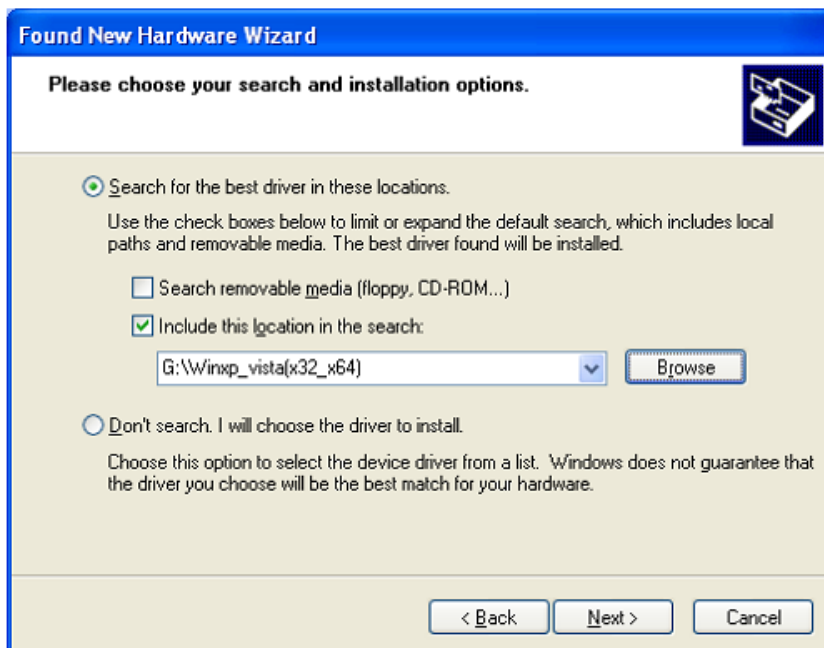
Step 19: Select "No,not this time", click "Next" to continue.



Step 20: Select “Install from a list of specific location(Advanced)”,click “Next” to continue.



Step 21: Select “Include this location in the search”, click“Browse” and choose the corresponding OS driver in CD. Click “Next” to continue



Step 22: Auto search for the corresponding driver in the CD.

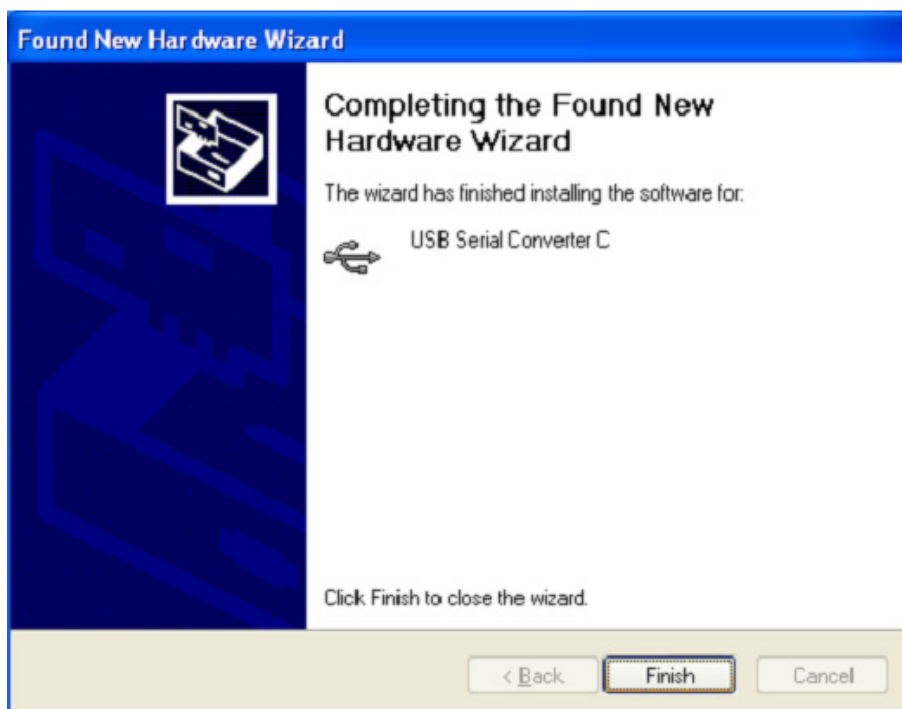


Step 23: The software you are installing for this hardware, Click “Continue Anyway” to continue



Step 24: The wizard has started installation and copy file to your system

Step 25: Click “Finish” to close the wizard.

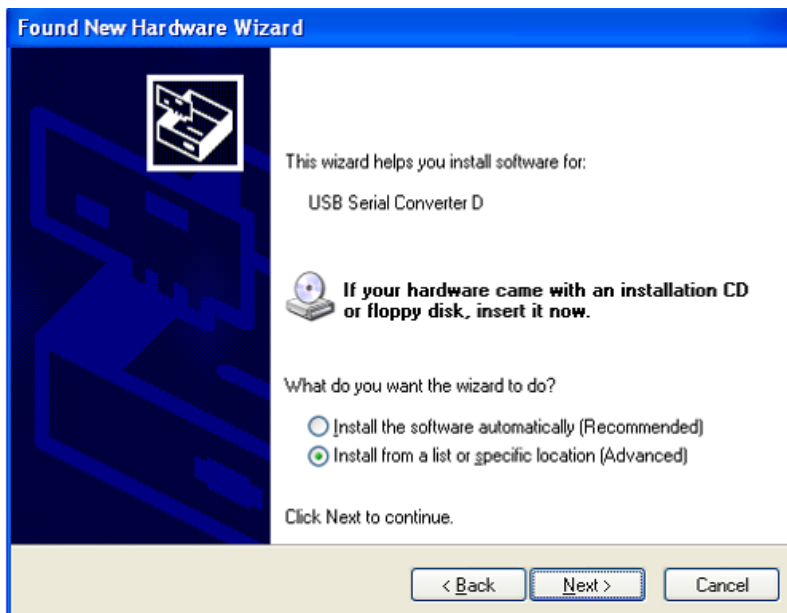


Step 26: Find new Hardware

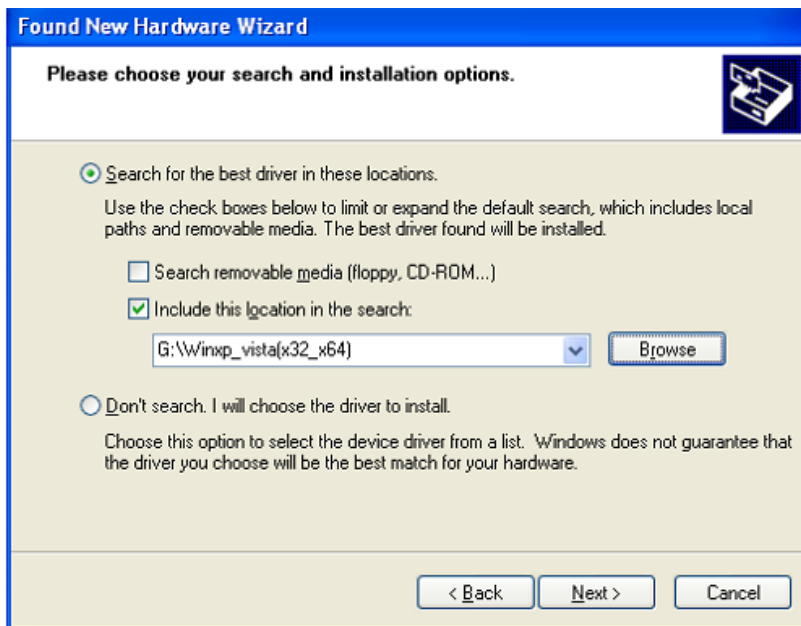
Step 27: Select “No,not this time”, click “Next” to continue.



Step 28: Select “Install from a list of specific location(Advanced)”,click “Next” to continue.



Step 29: Select “Include this location in the search”, click “Browse” and choose the corresponding OS driver in CD. Click “Next” to continue



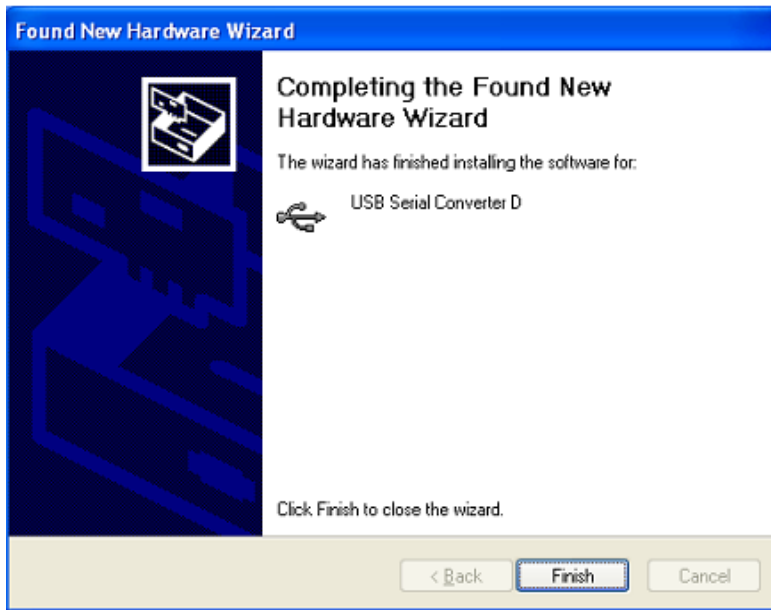
Step 30: Auto search for the corresponding driver in the CD.

Step 31: The software you are installing for this hardware, Click “Continue Anyway” to continue



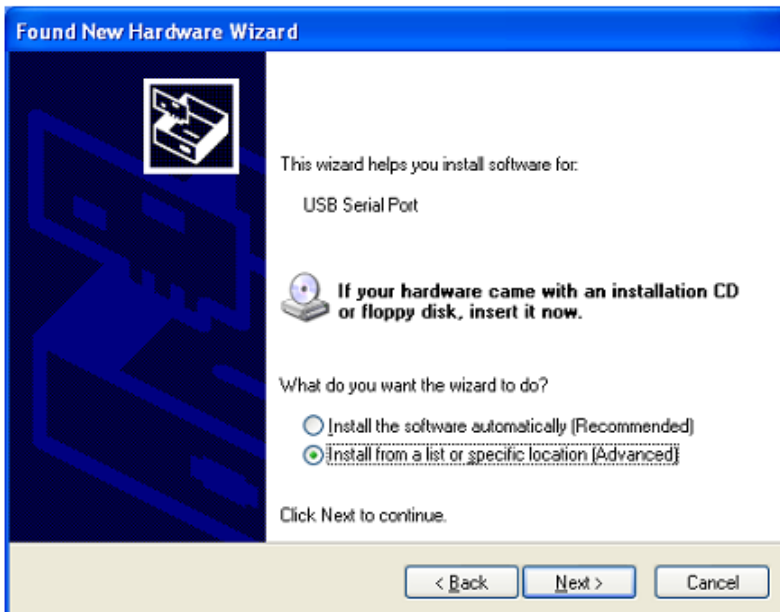
Step 32: The wizard has started installation and copy file to your system

Step 33: Click "Finish" to close the wizard.

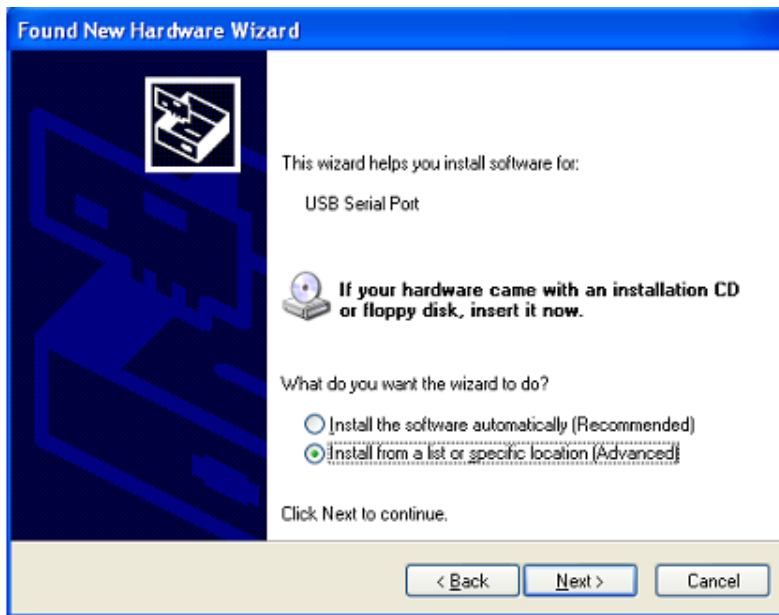


Step 34: Find new Hardware

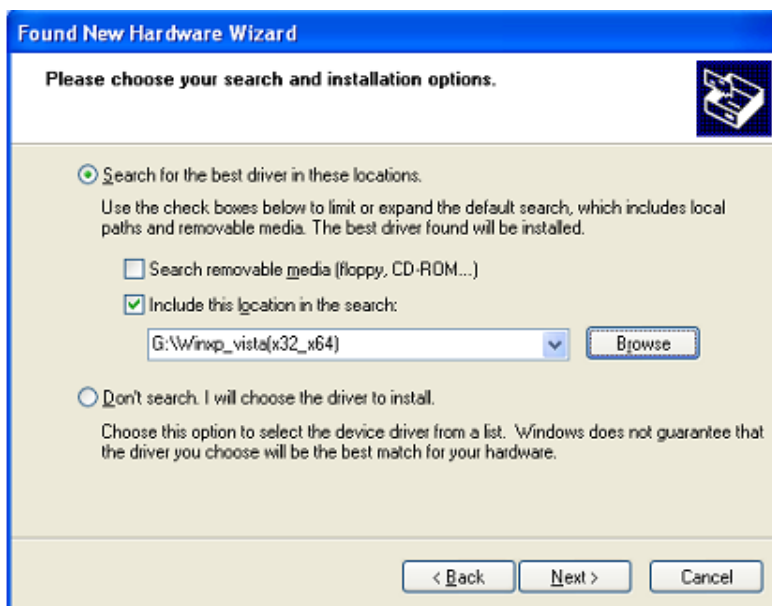
Step 35: Select "No, not this time", click "Next" to continue.



Step 36: Select "Install from a list of specific location(Advanced)",click "Next" to continue.



Step 37: Select "Include this location in the search", click "Browse" and choose the corresponding OS driver in CD. Click "Next" to continue



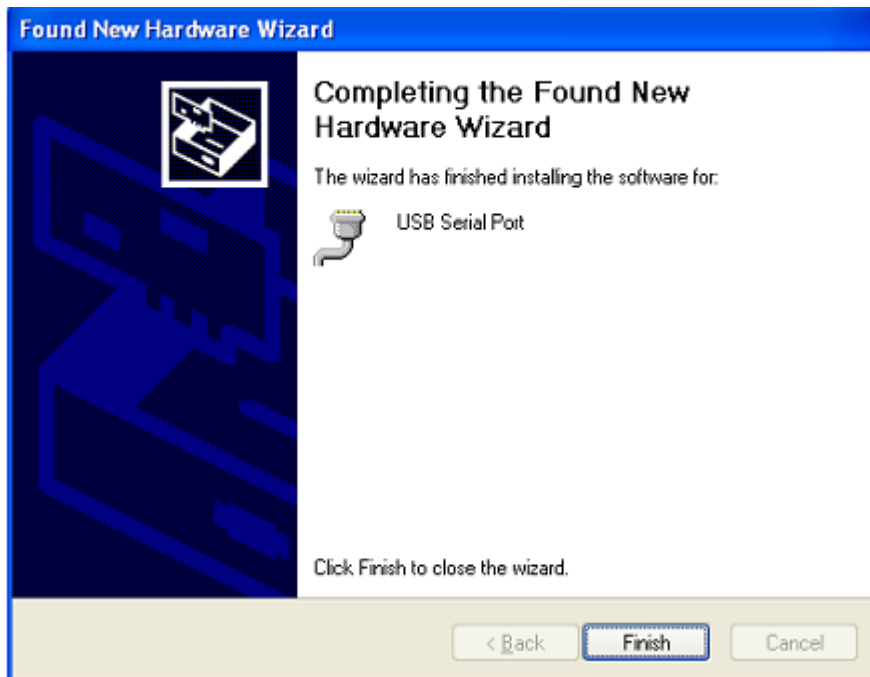
Step 38: Auto search for the corresponding driver in the CD.

Step 39: The software you are installing for this hardware, Click “Continue Anyway” to continue



Step 40: The wizard has started installation and copy file to your system

Step 41: Click “Finish” to close the wizard.

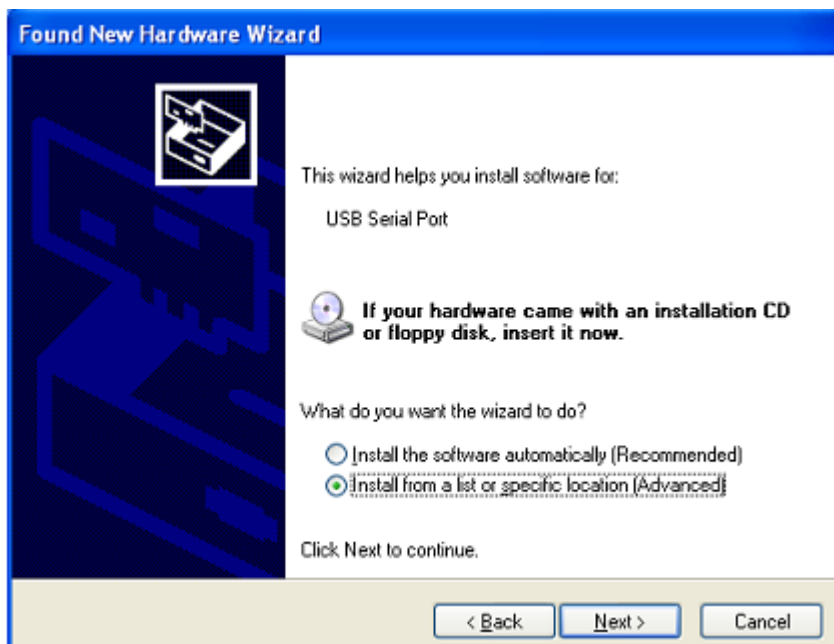


Step 42: Find new Hardware

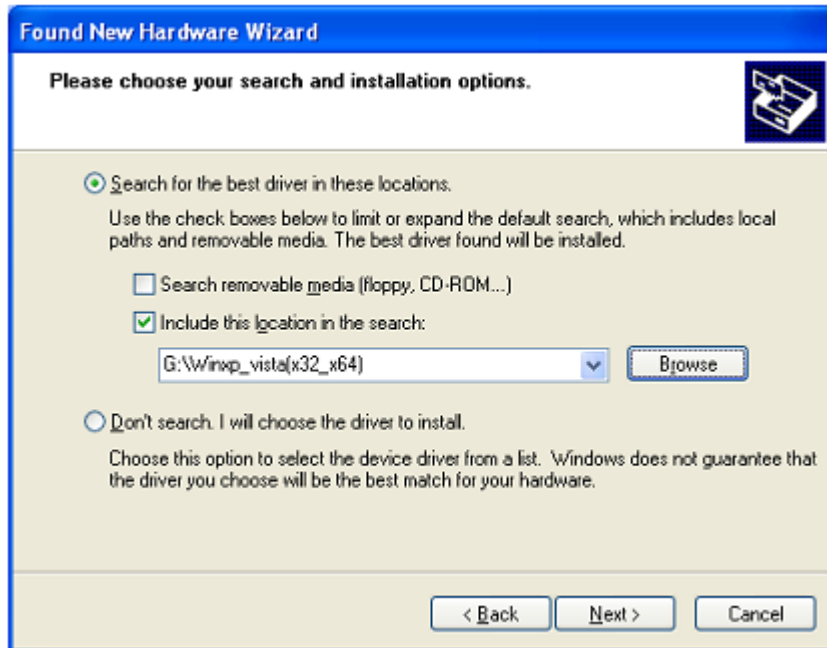
Step 43: Select "No,not this time",click "Next" to continue.



Step 44: Select "Install from a list of specific location (Advanced)",click "Next" to continue.



Step 45: Select “Include this location in the search”, click “Browse” and choose the corresponding OS driver in CD. Click “Next” to continue



Step 46: Auto search for the corresponding driver in the CD.

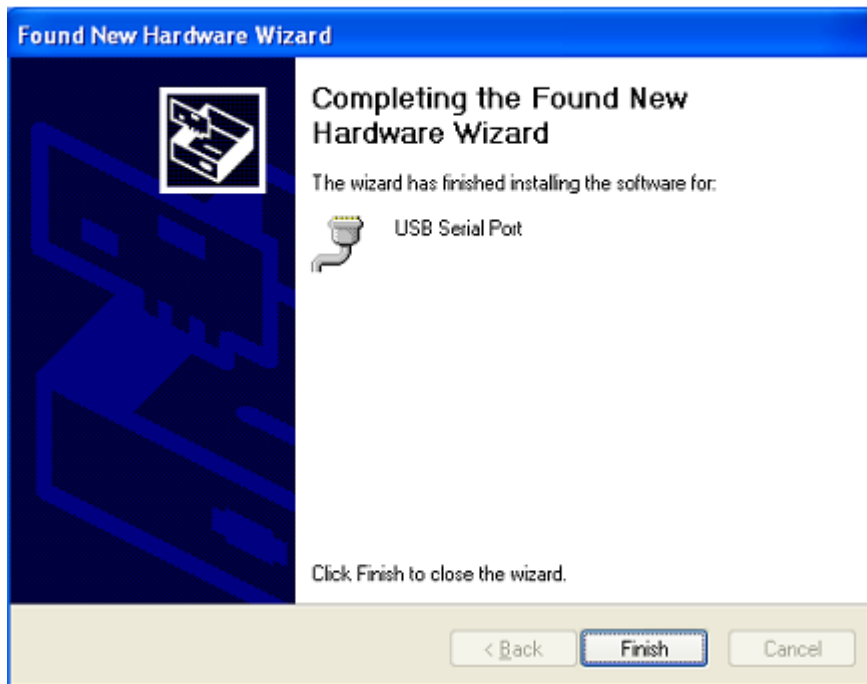
Step 47: The software you are installing for this hardware, Click “Continue Anyway” to continue.



Step 48: The wizard has started installation and copy file to your system

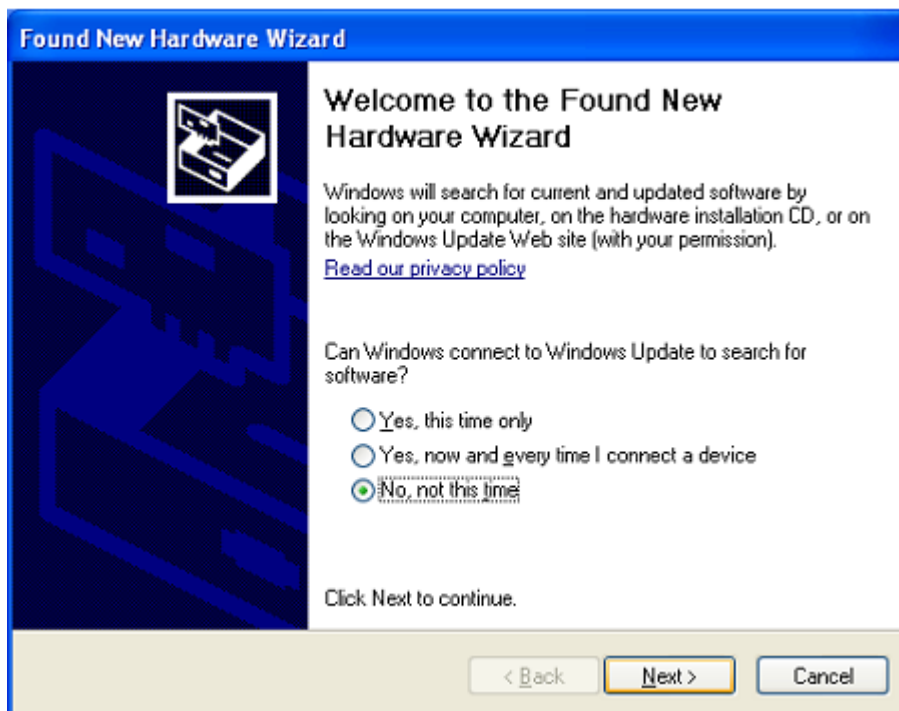


Step 49: Click "Finish" to close the wizard.

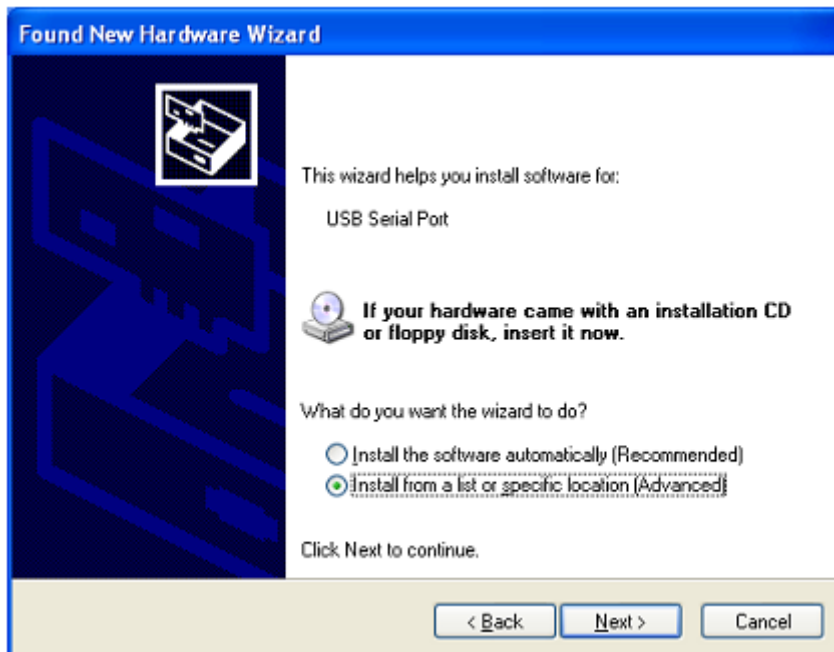


Step 50: Find new Hardware

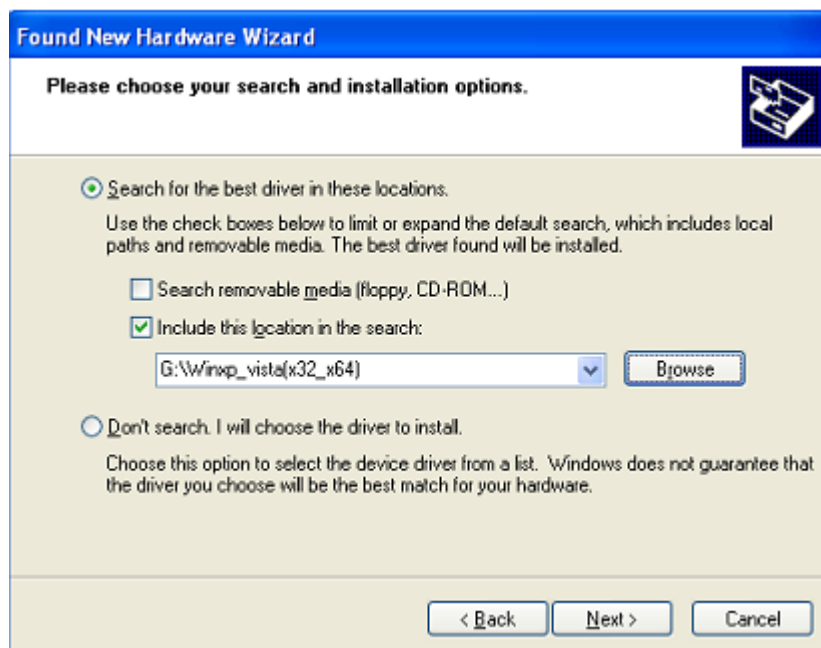
Step 51: Select "No,not this time",click "Next" to continue.



Step 52: Select "Install from a list of specific location (Advanced)", click "Next" to continue.



Step 53: Select "Include this location in the search", click "Browse" and choose the corresponding OS driver in CD. Click "Next" to continue



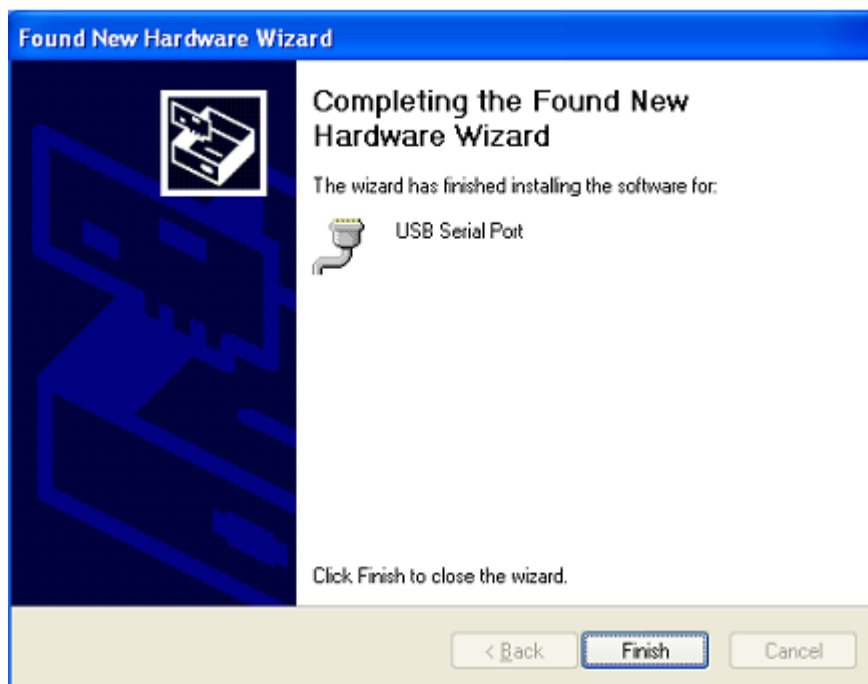
Step 54: Auto search for the corresponding driver in the CD.

Step 55: The software you are installing for this hardware, Click “Continue Anyway” to continue



Step 56: The wizard has started installation and copy file to your system

Step 57: Click “Finish” to close the wizard.

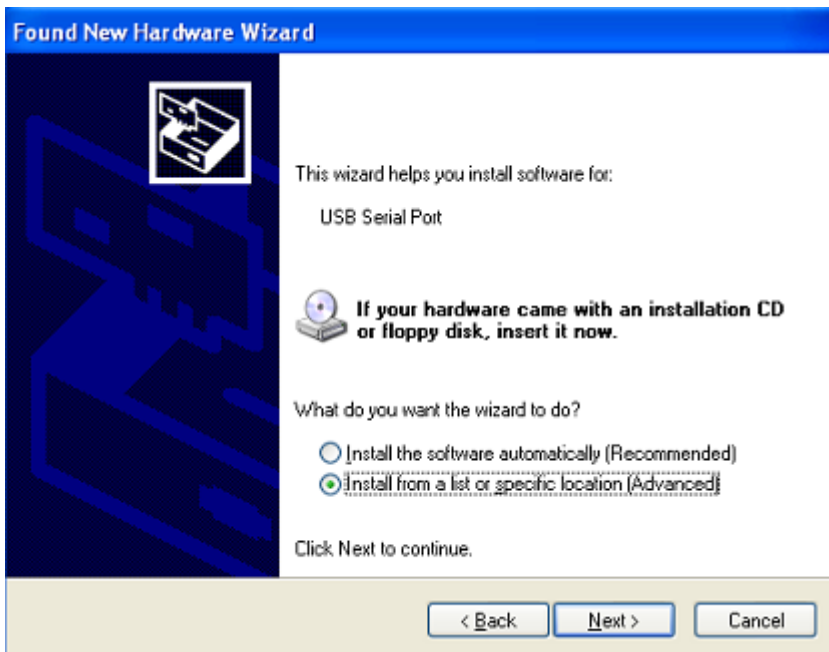


Step 58: Find new Hardware

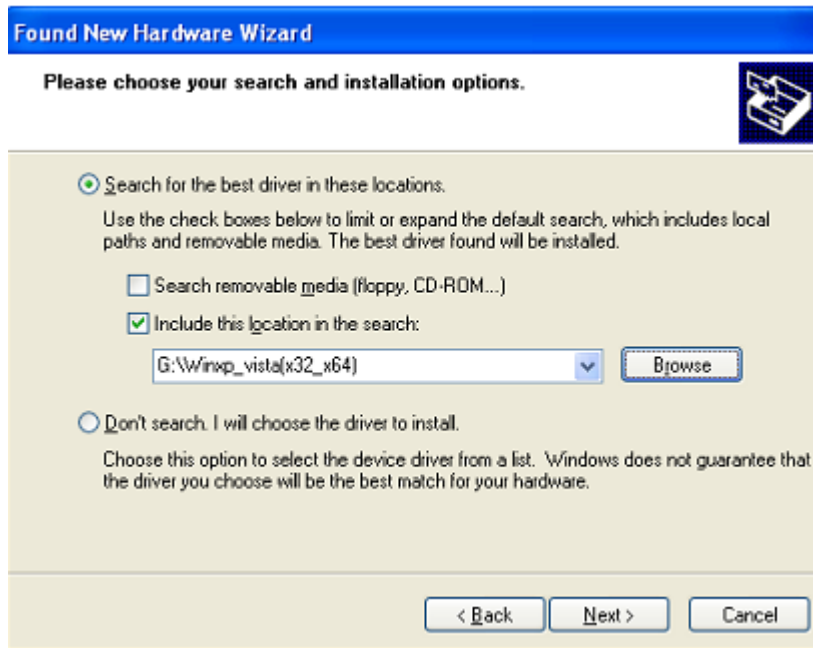
Step 59: Select "No, not this time", click "Next" to continue.



Step 60: Select "Install from a list of specific location (Advanced)", click "Next" to continue.



Step 61: Select “Include this location in the search”, click “Browse” and choose the corresponding OS driver in CD. Click “Next” to continue



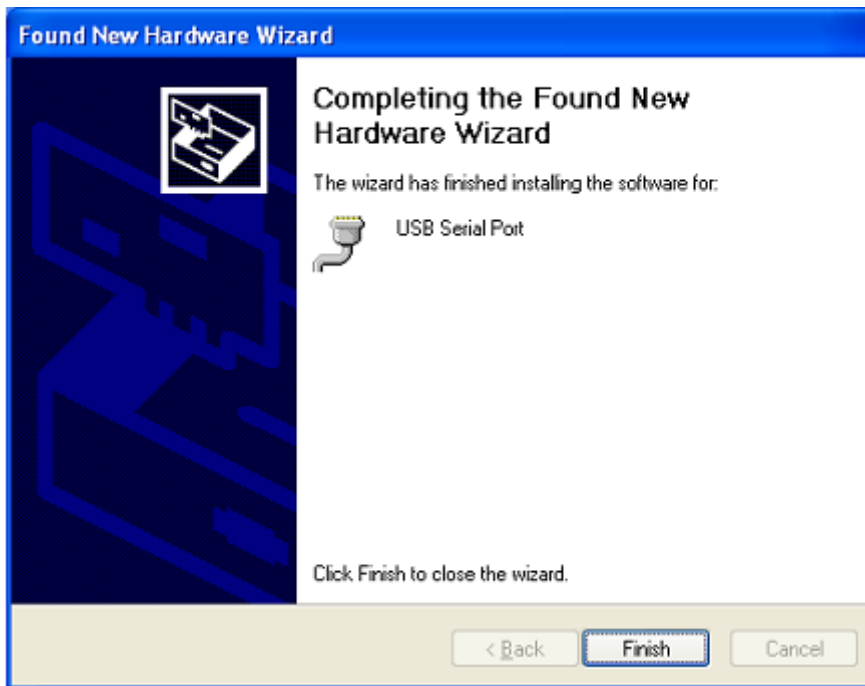
Step 62: Auto search for the corresponding driver in the CD.

Step 63: The software you are installing for this hardware, Click “Continue Anyway” to continue



Step 64: The wizard has started installation and copy file to your system

Step 65: Click "Finish" to close the wizard.



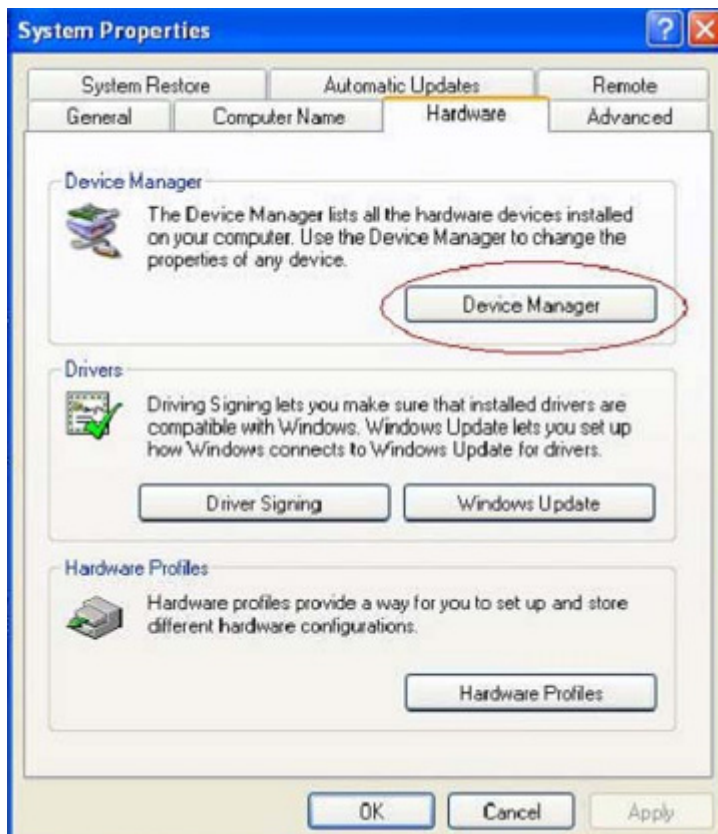
Step 66: Your new hardware is installed and ready to use.

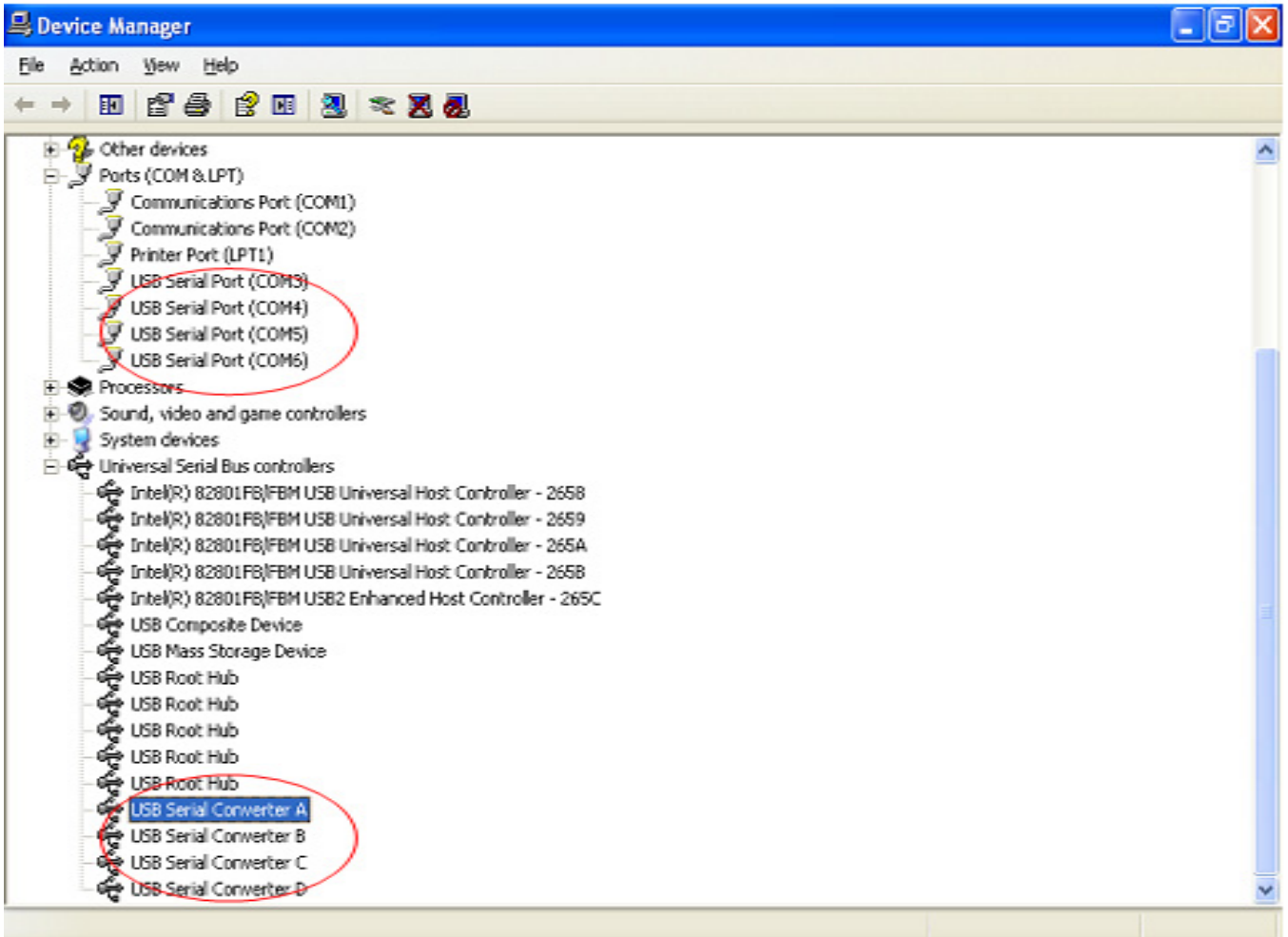


Step 67: If you want to see it, right click “ my computer” , then click “Properties”



Step 68: Select “Device Manager” in the “Hardware” of the interface “System Properties”, click it, you can see the hardware devices installed on your computer , please refer to the following chart :





Step 69: Installation finished.

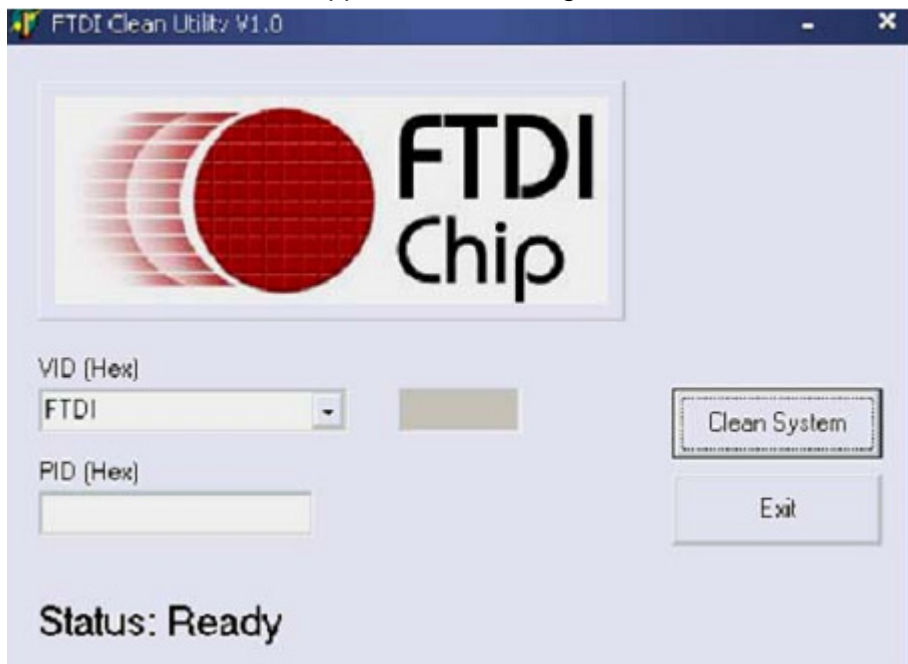
**Remove Driver:**

1. Open the drivers of this product , please refer to the below chart :





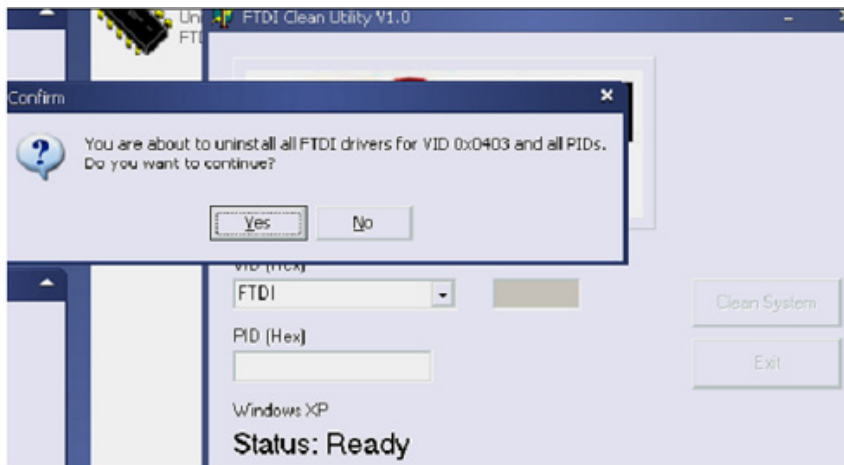
2. Double click "FTClen.exe", it appears the following interface



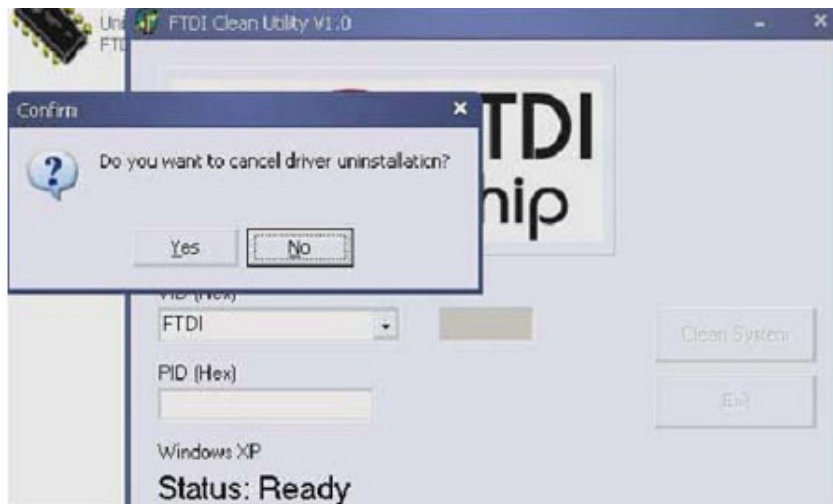
3. Click "Clean System", it appears the following interface



4. Disconnect USB to Serial Converter device from the pc, Click “ok” it appears the following interface, then click “Yes”



5. Please click “No” to uninstall driver



6. When Uninstall is completed, please click “Exit” to terminate the uninstall application.

