



USB TO SERIAL CONVERTER



**Quick Installation Guide
Windows 2000/XP
DA-70158**

Step 1: Insert CD Driver of this product to the CD-ROM

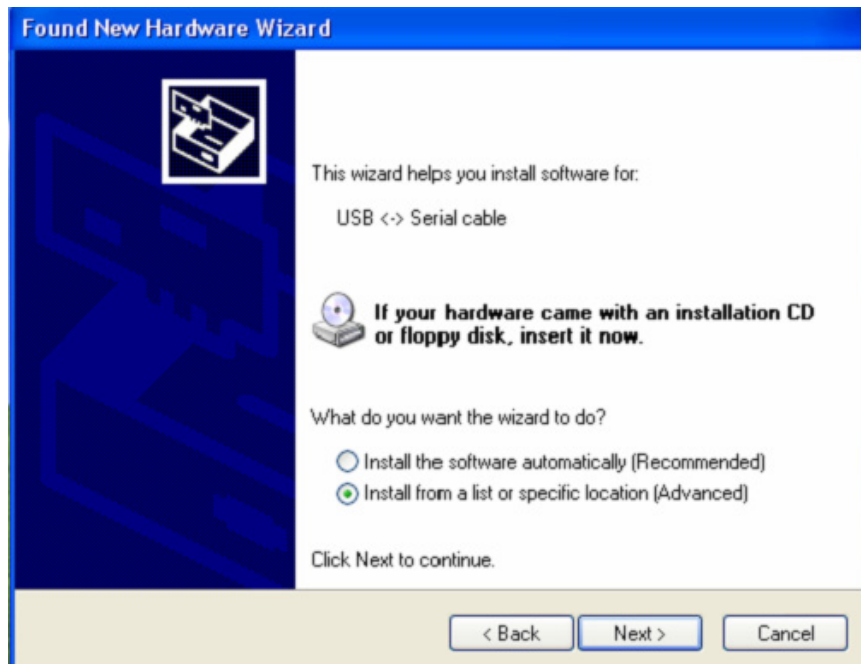
Step 2: Connect the device to a spare USB port on your PC , and find new hardware wizard, please refer to the following chart:



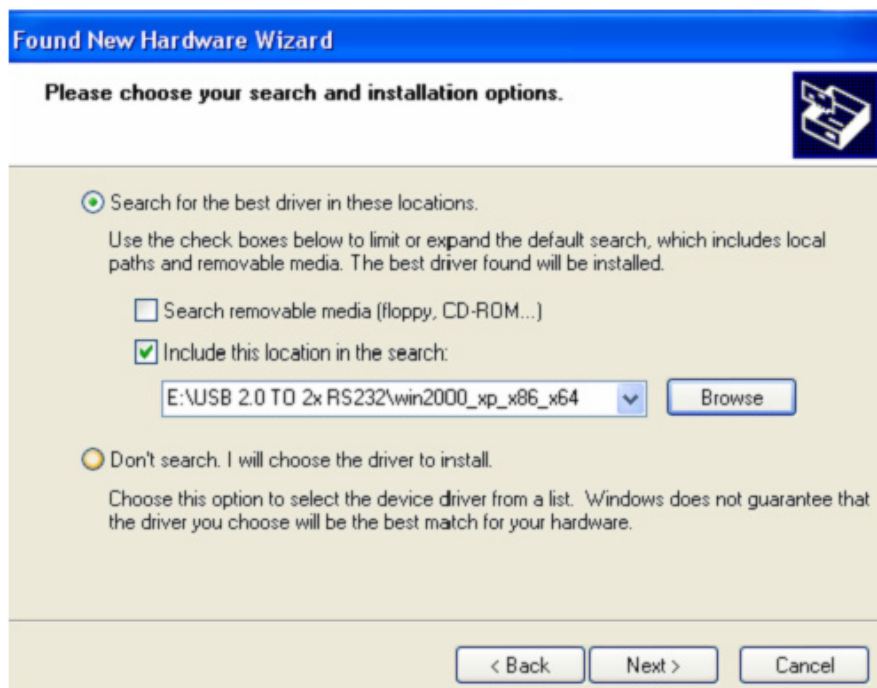
Step 3: Select "No,not this time",click "Next" to continue.



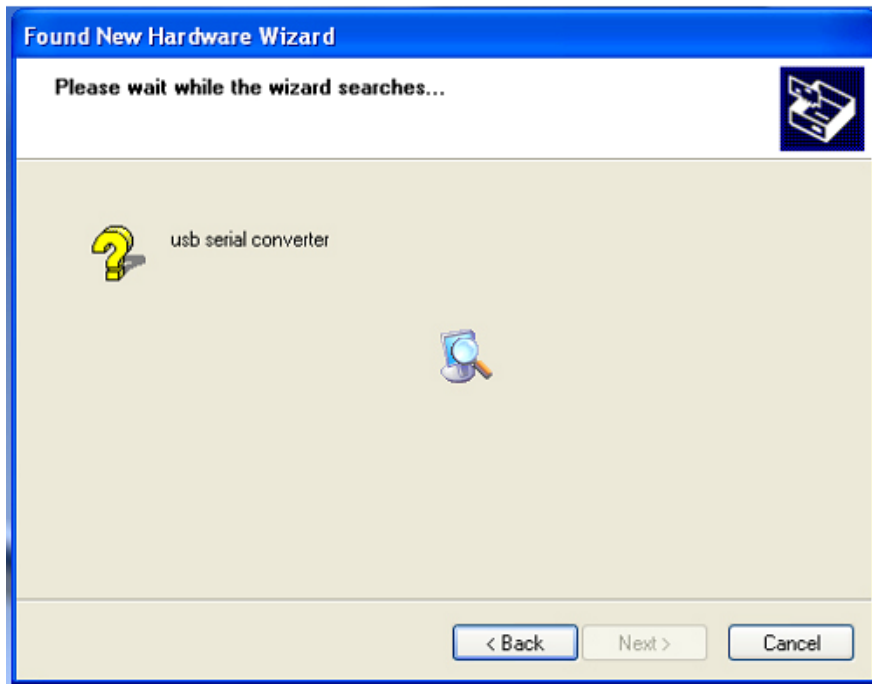
Step 4: Select “Install from a list or specific location (Advanced)”,click “Next” to continue.



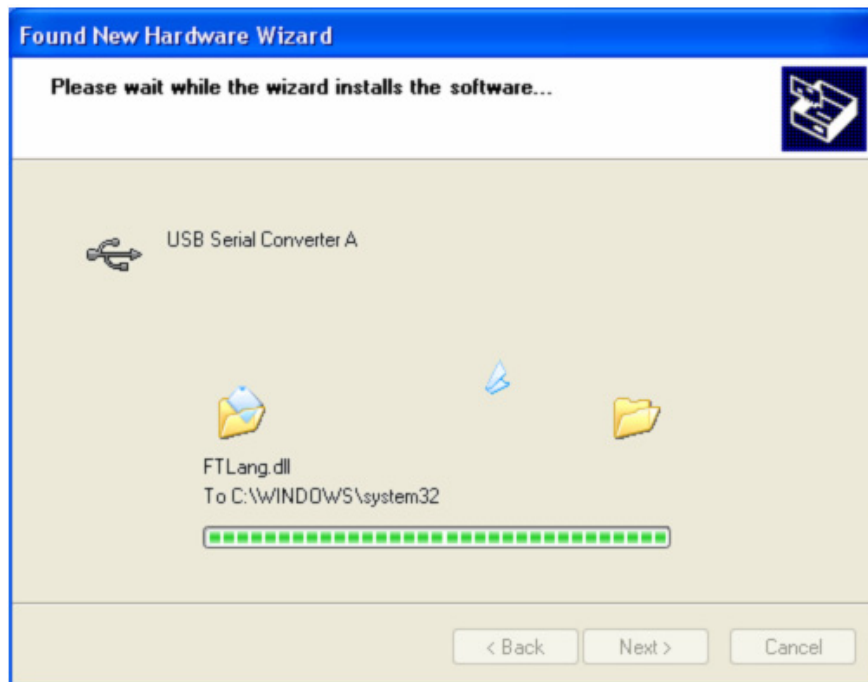
Step 5: Select “Include this location in the search”, click “Browse” and choose the corresponding OS driver in CD. Click “Next” to continue



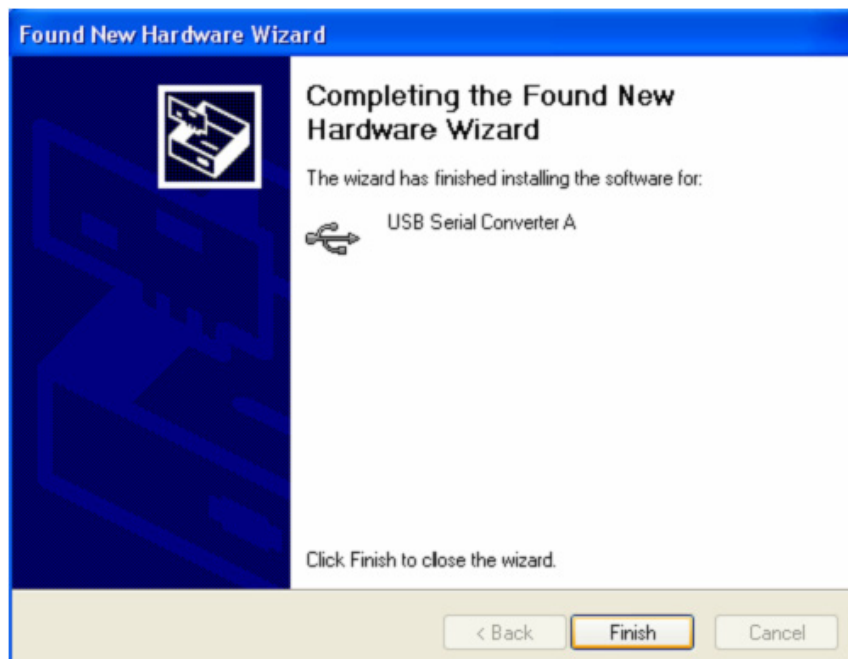
Step 6: Auto search for the corresponding driver in the CD.



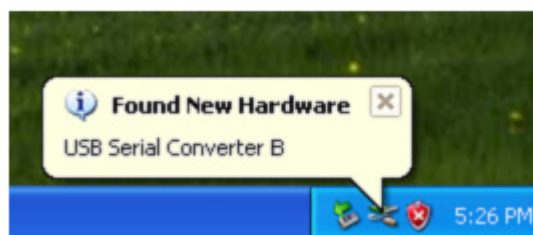
Step 7: The wizard has started installation and copy file to your system



Step 8: Click "Finish" to close the wizard.



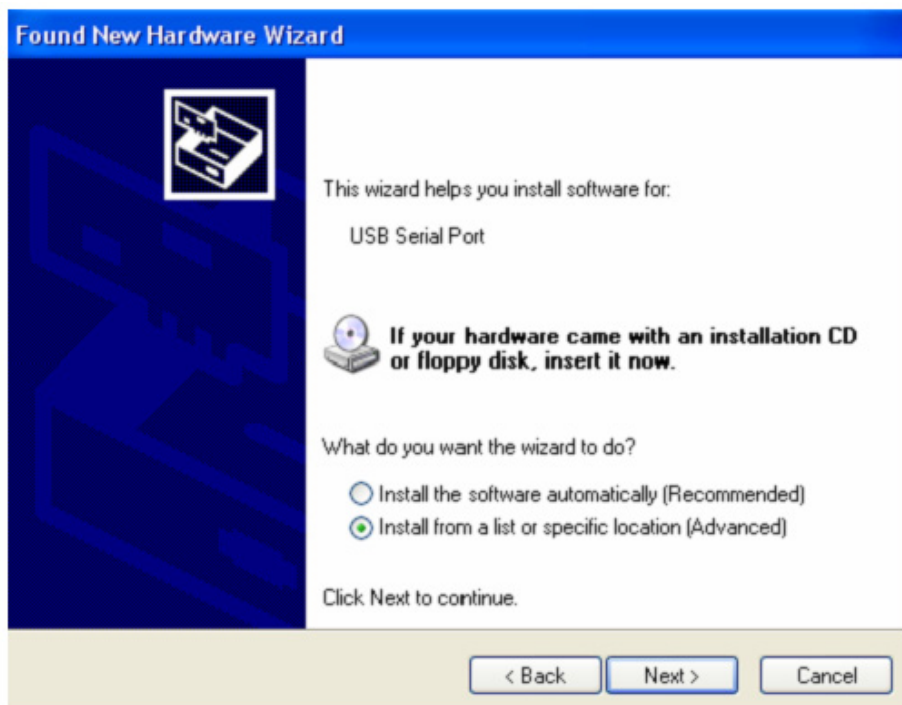
Step 9: Find new com port.



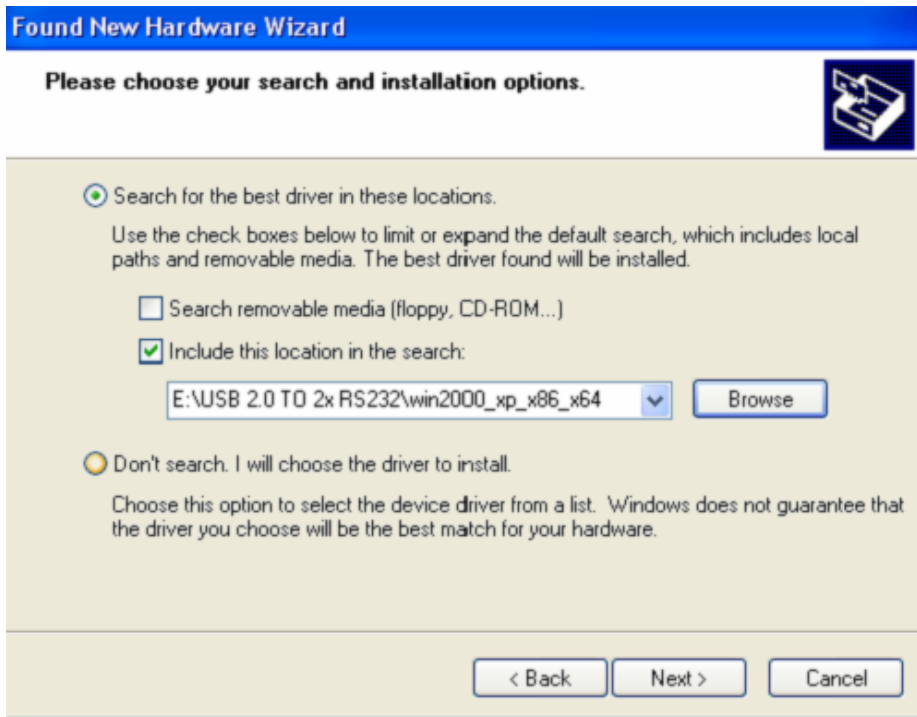
Step 10: Select “No,not this time”,click “Next” to continue.



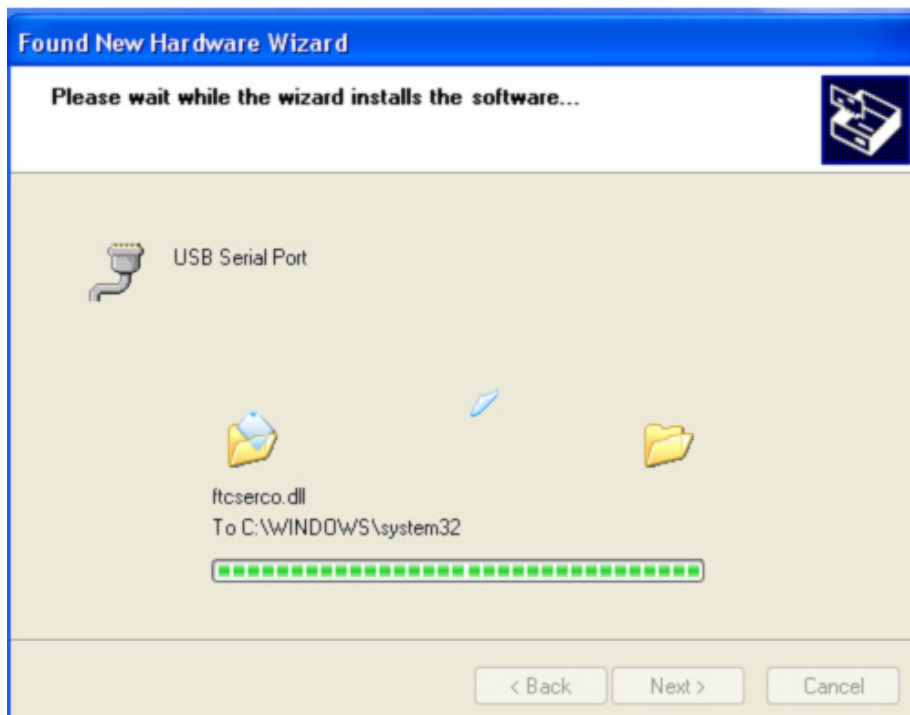
Step 11: Select “Install from a list or specific location(Advanced),click “Next” to continue.



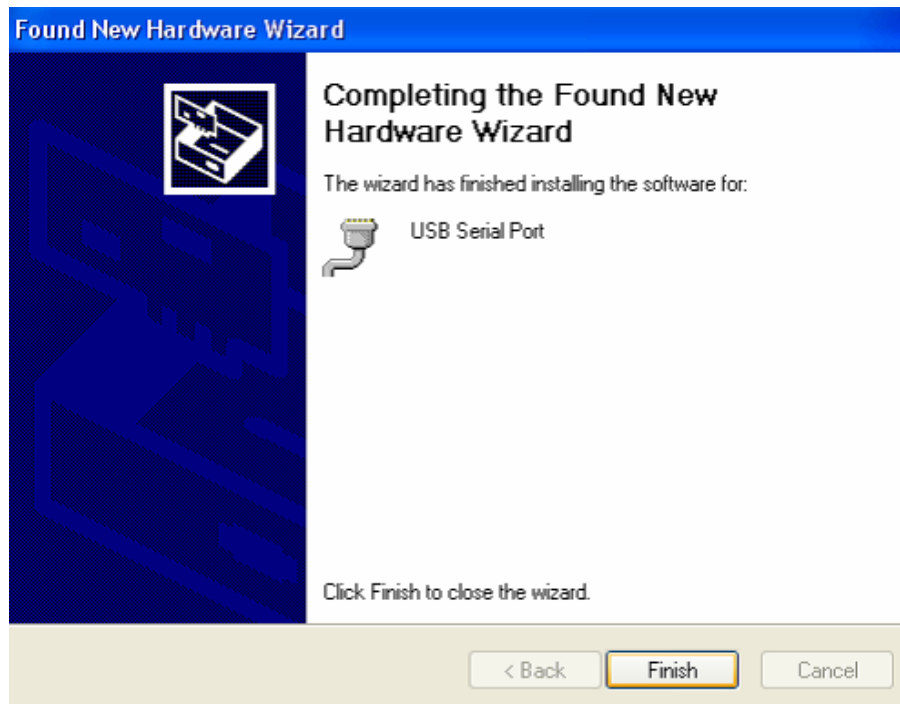
Step 12: Select “Include this location in the search”, click “Browse” and choose the corresponding OS driver in CD. Click “Next” to continue



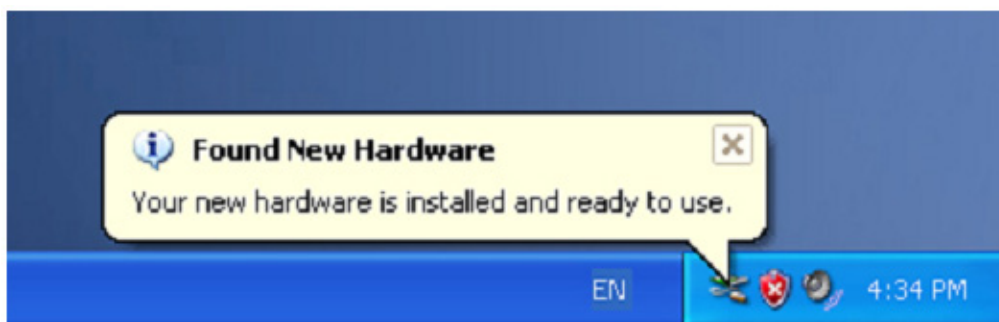
Step 13: The wizard has started installing and copying files to your system.



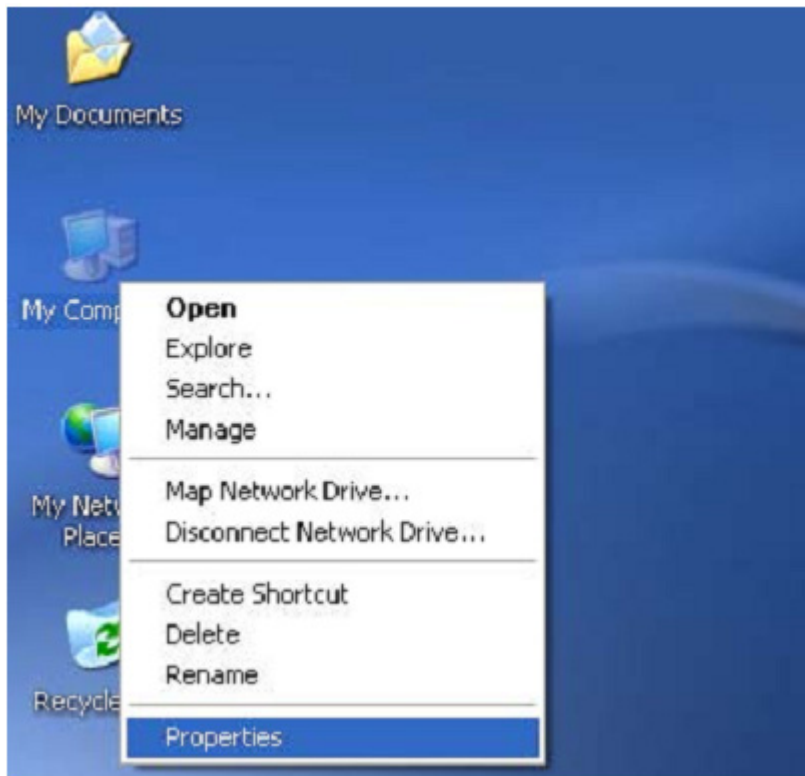
Step 14: Installation completed , click “Finish” to close the wizard.



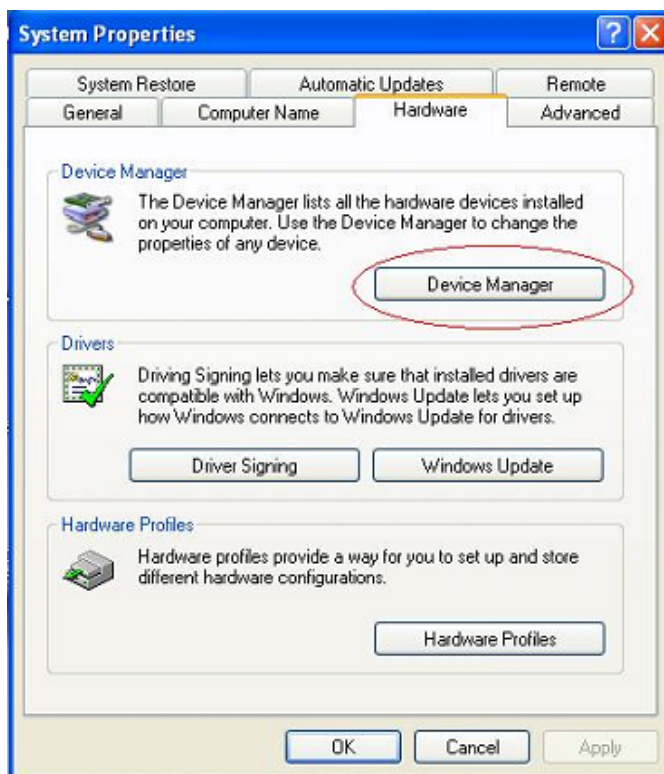
Step 15: Your new hardware is installed and ready to use.

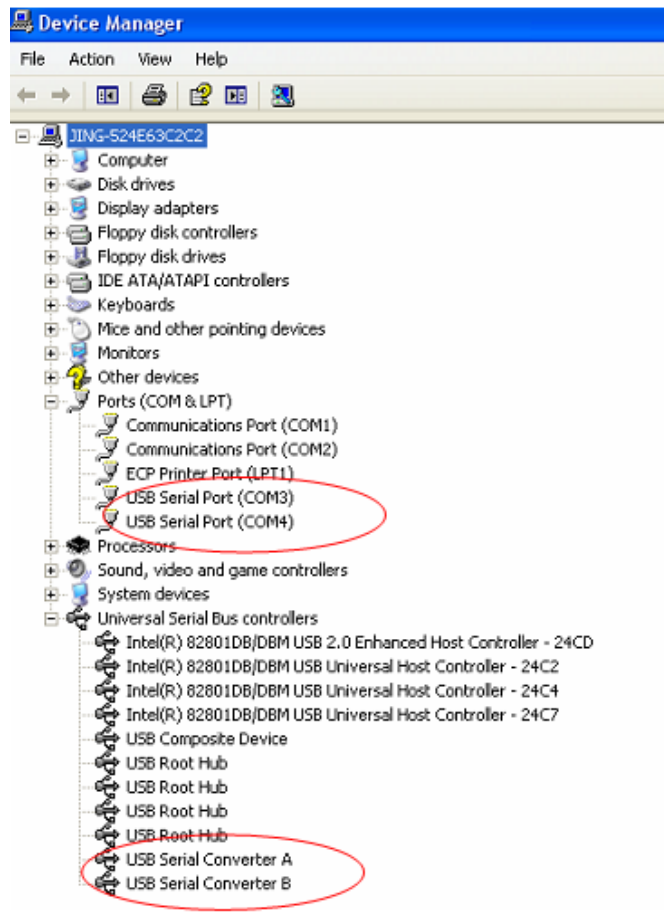


Step 16: If you want to see it, right click “ my computer” , then click “Properties”.



Step 17: Select “Device Manager” in the “Hardware” of the interface “System Properties”, click it, you can see the hardware devices installed on your computer , please refer to the following chart :

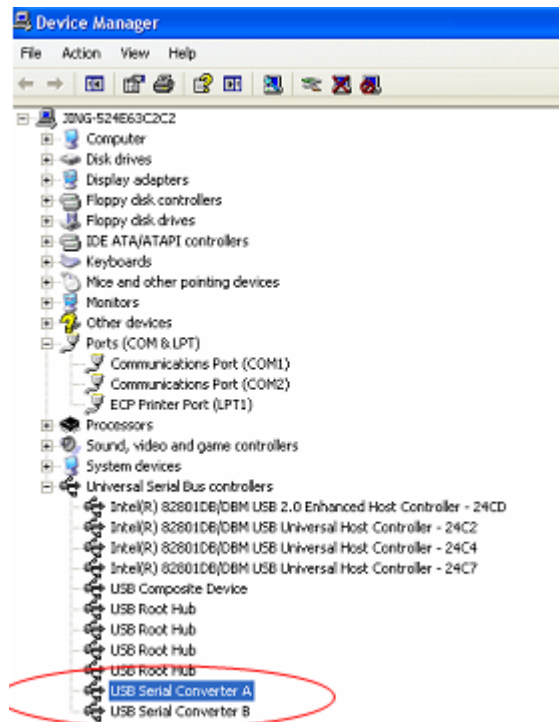




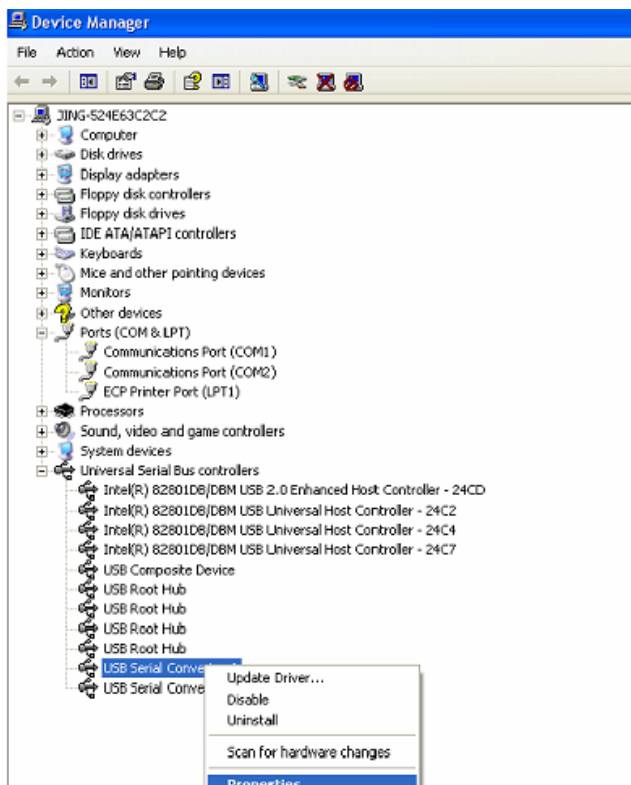
Step 18: Installation finished .

Remarks:

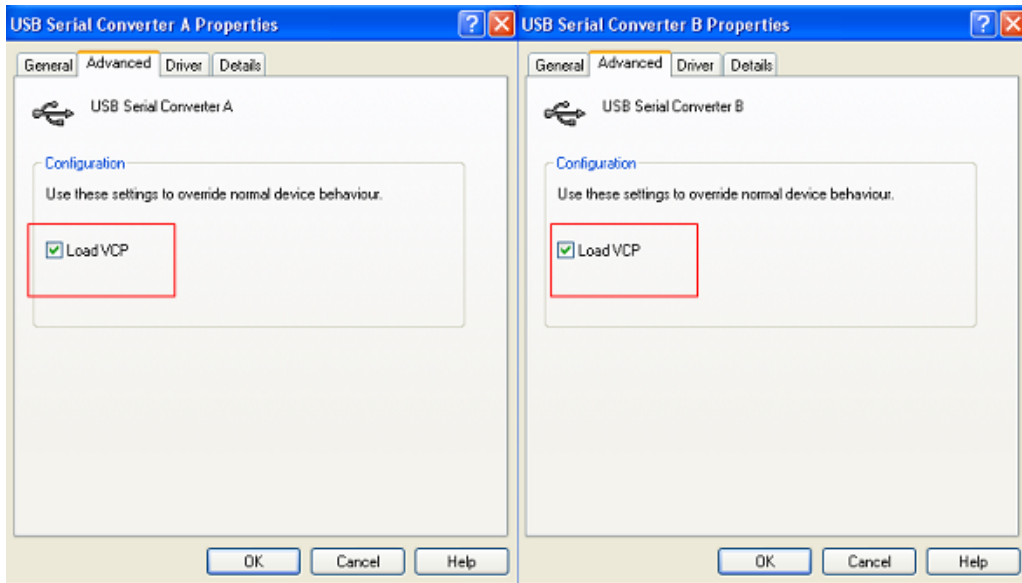
After installation , if you can see “USB Serial Converter” from the “Device Manager” ,but can’t see “USB Serial Port(COM3/COM4)” , please continue next steps.



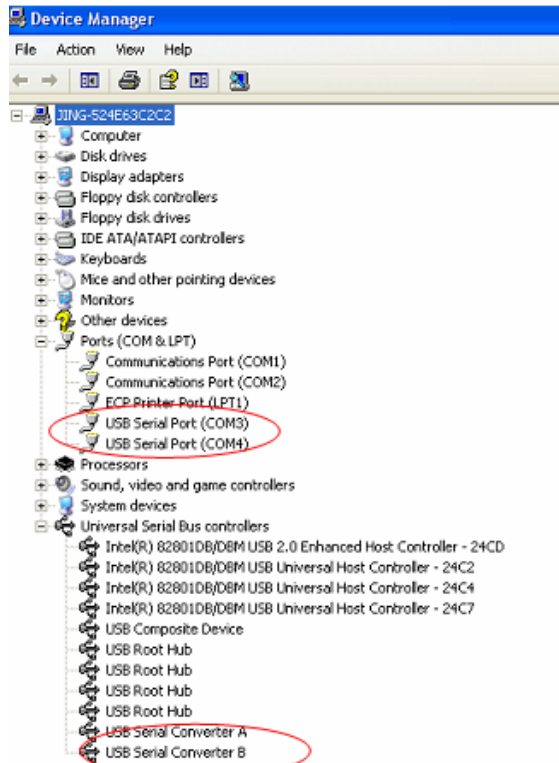
Step A: Right click “USB Serial Converter A/ USB Serial Converter B”, then click “Properties”.



Step B: Select “Load VCP” in the “Advanced”, click “OK”.



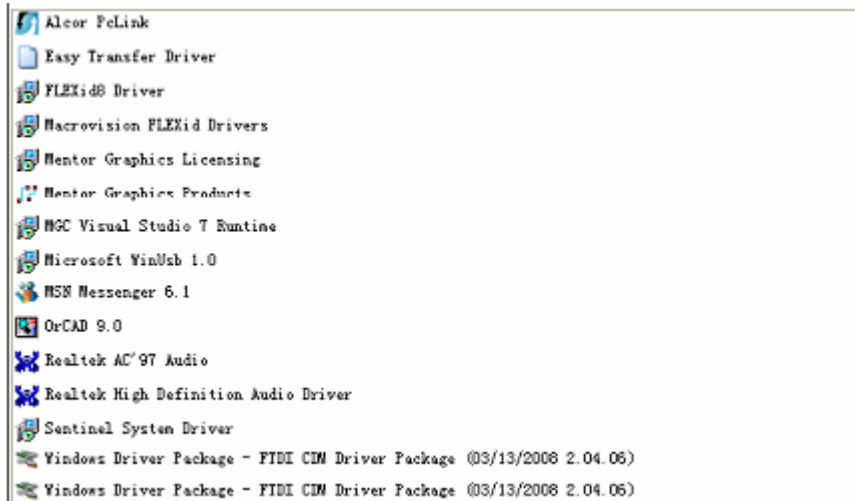
Step C: Move out USB 2.0 TO 2* RS232 on your computer. Connect the device to an old USB port on your PC again, now it's ok , please refer to the following chart:



Congratulations, installation is successful.

Remove Driver

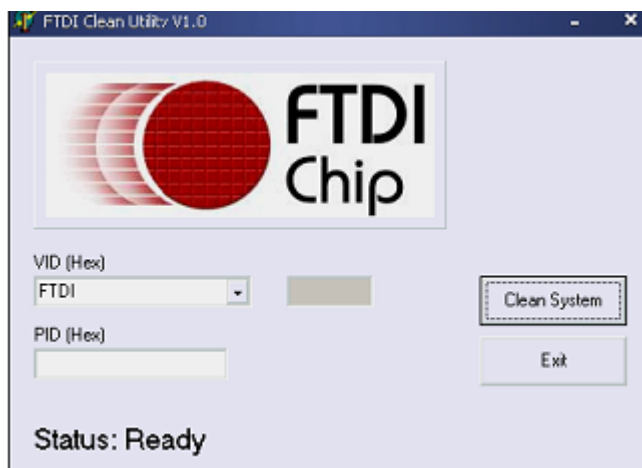
1. Go to the "Add or Remove program" from "Control pane" to find the "Windows Driver Package--- FTDI CDM Driver Package (03/13/2008 2.04.06) Windows Driver Package--- FTDI CDM Driver Package (03/13/2008 2.04.06)"



2. Just select it and click "Remove" to remove the driver program
3. Open the drivers of this product, please refer to the below chart :



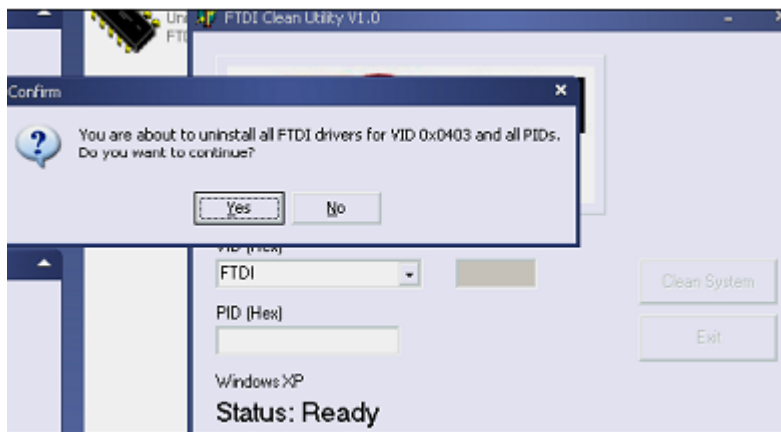
4. Double click "FTClen.exe", it appears the following interface



- Click "Clean System", it appears the following interface:



- Disconnect USB 2.0 To 2* rs232 device from the pc, click "ok" it appears the following interface, then click "Yes "



- Please click "No" to uninstall driver



- When Uninstall is completed, please click “Exit” to terminate the uninstall application.

