



USB TO SERIAL CONVERTER



Quick Installation Guide
Windows 7/8/8.1
DA-70158

Step 1: Insert CD Driver of this product to the CD-ROM

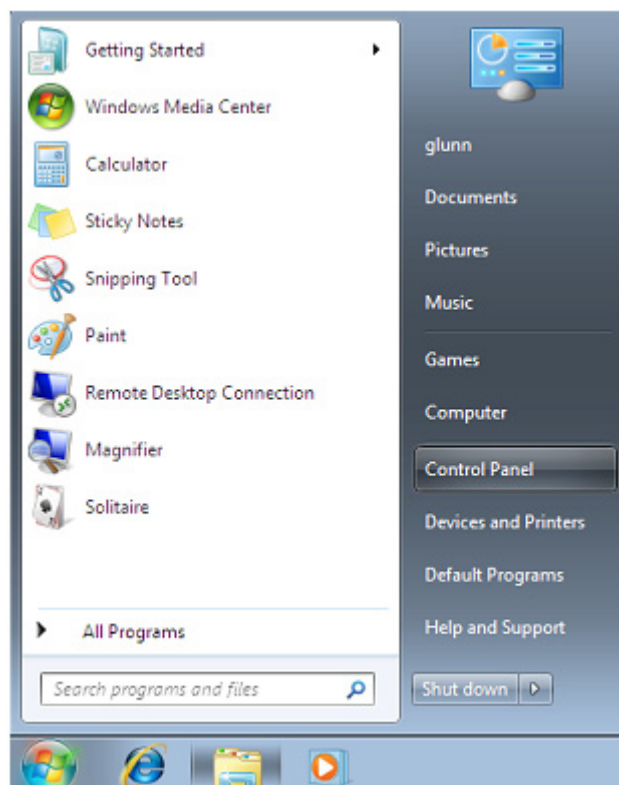
Connect the device to a spare USB port on your PC.

Step 2: If there is an available Internet connection, Windows 7/8/8.1 will silently connect to the Windows Update website and install any suitable driver it finds for the device.

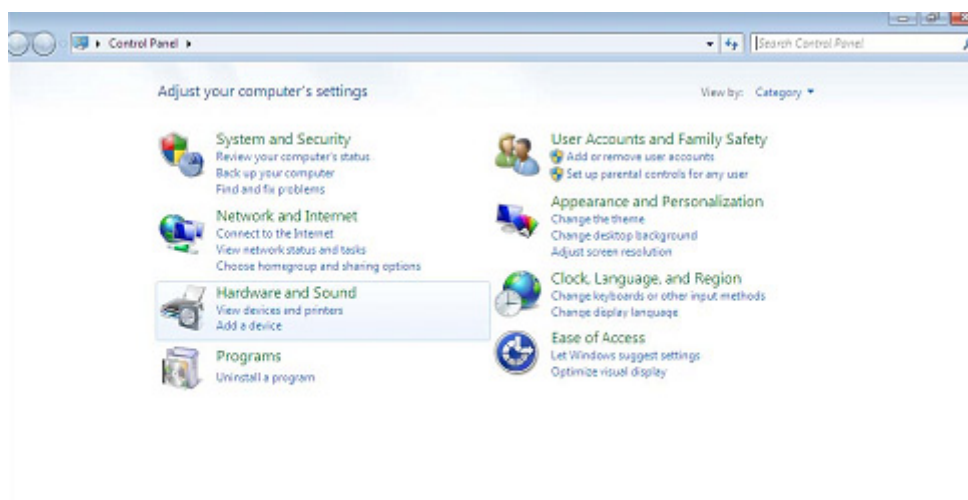
If the automatic installation takes place there is no need to continue with the procedure outlined below.

If no suitable driver is automatically found then the following procedure should be followed.

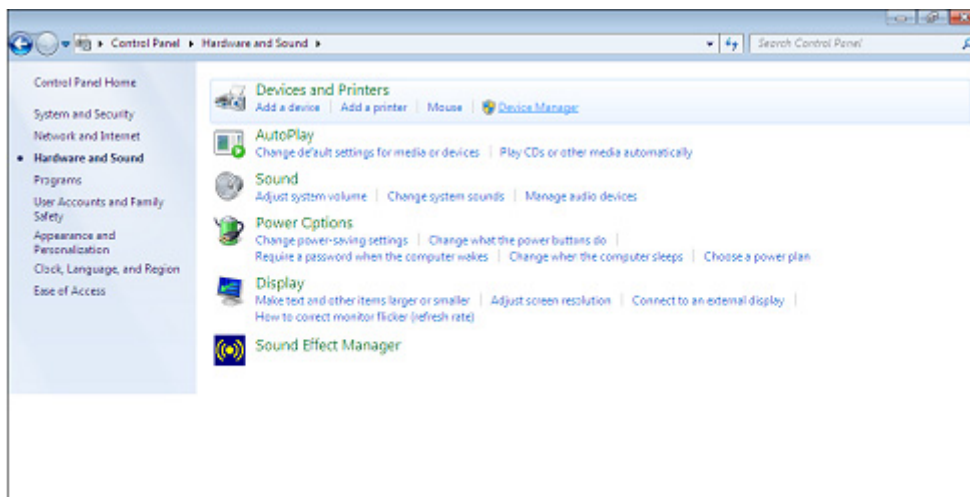
Press the Windows start button to bring up the start menu and select "Control Panel".



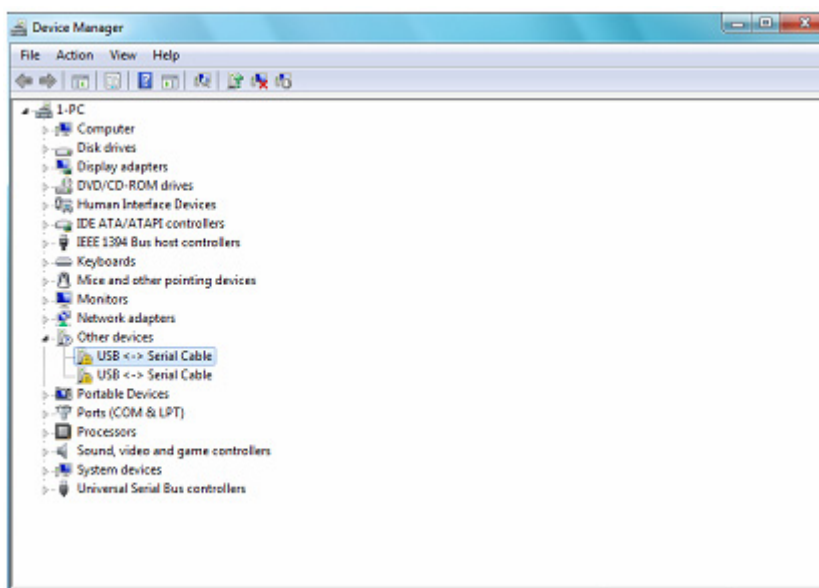
Step 3: From the Control Panel window select Hardware and Sound



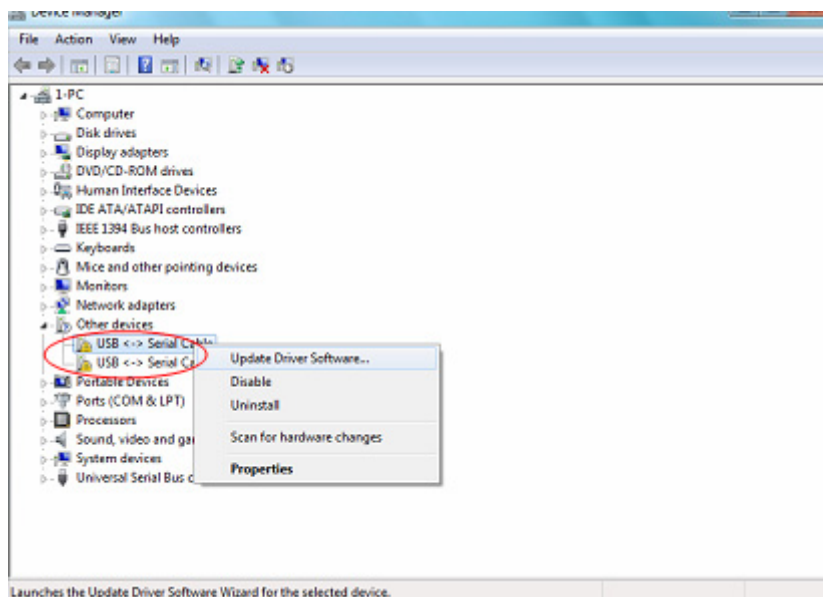
Step 4: At the next screen select Device Manager:



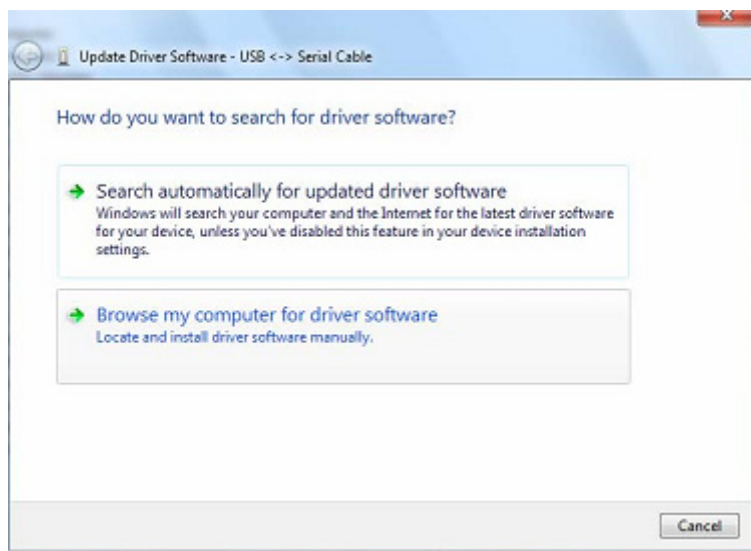
Step 5: In the Device Manager window there will be a device under Other Devices with a yellow warning symbol to indicate a problem ie no driver installed. The text next to this device will depend on the device attached. In this example the devices was “USB Serial Cable” devices.



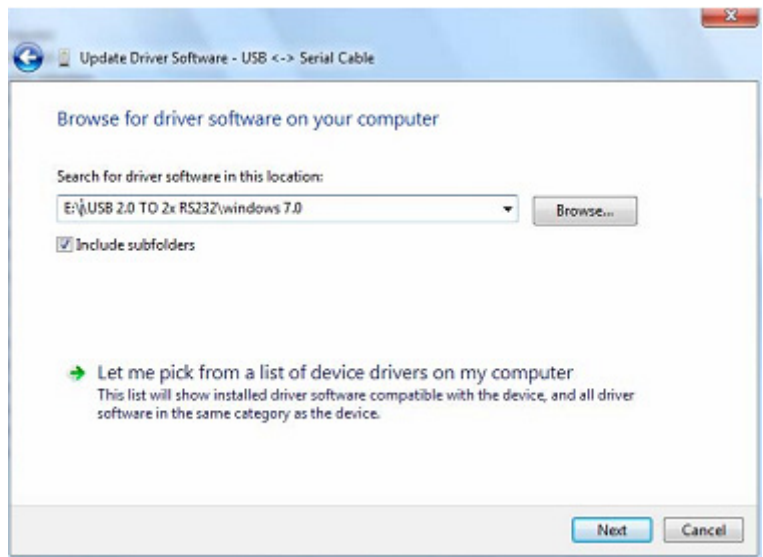
Step 6: Right click on the other device to bring up a menu as shown below. From the displayed menu select “Update Driver Software...” This then displays the option for an automatic search or a manual search.



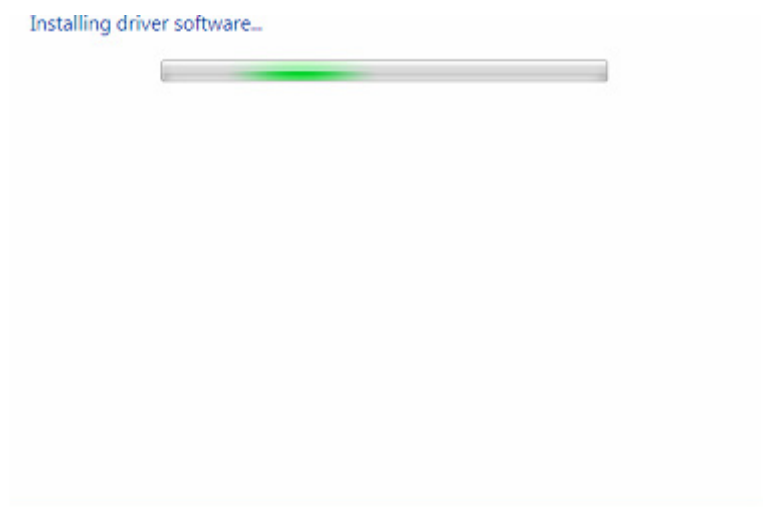
Step 7: Select the second option to browse manually.



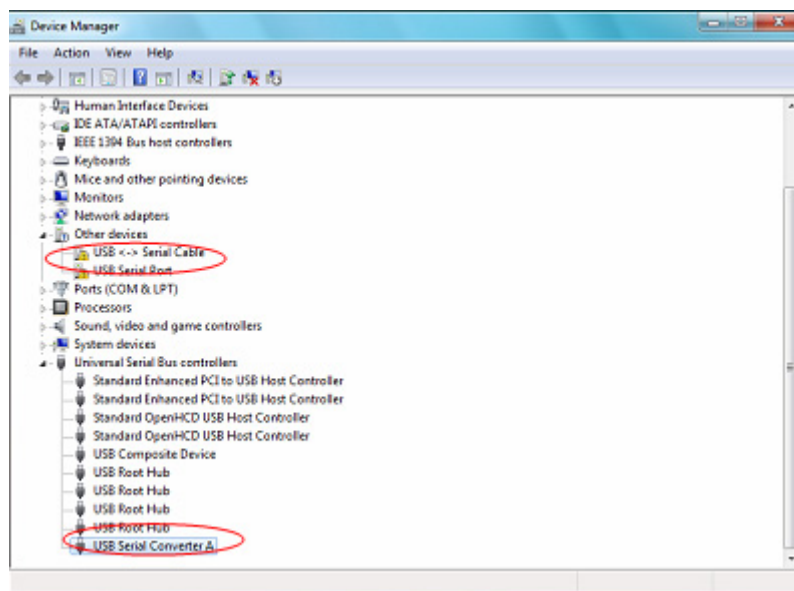
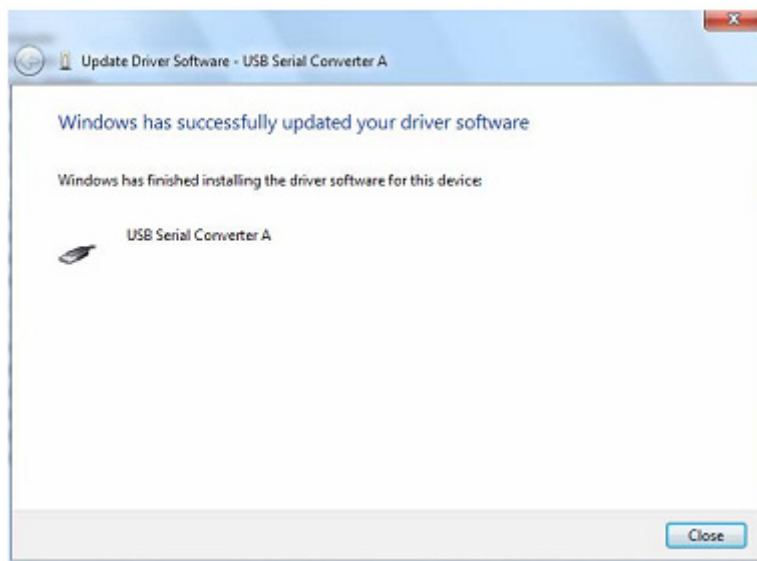
Step 8: Click “Browse” and choose the corresponding OS driver in CD. Click “Next” to continue



Step 9: When the installation has finished a completion screen is displayed.

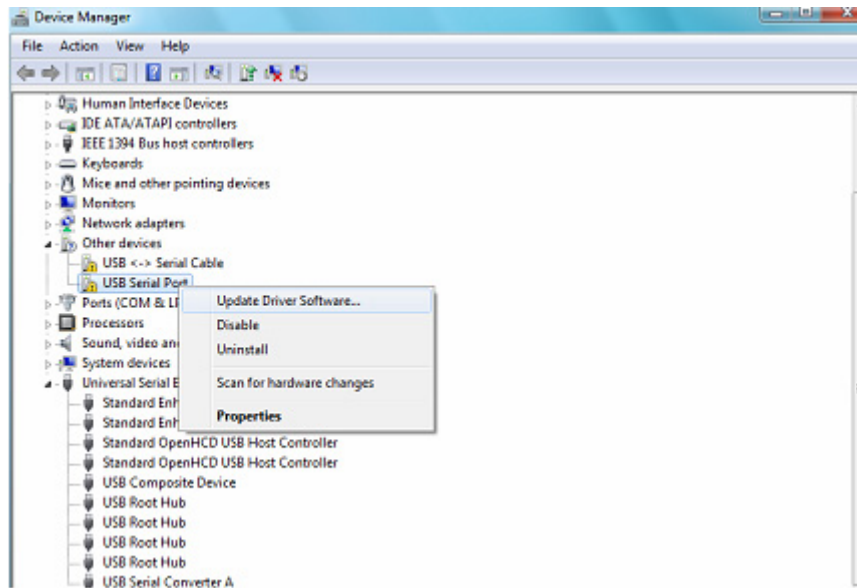


Step 10: Press Close to close this window and go back to the Device Manager Window.

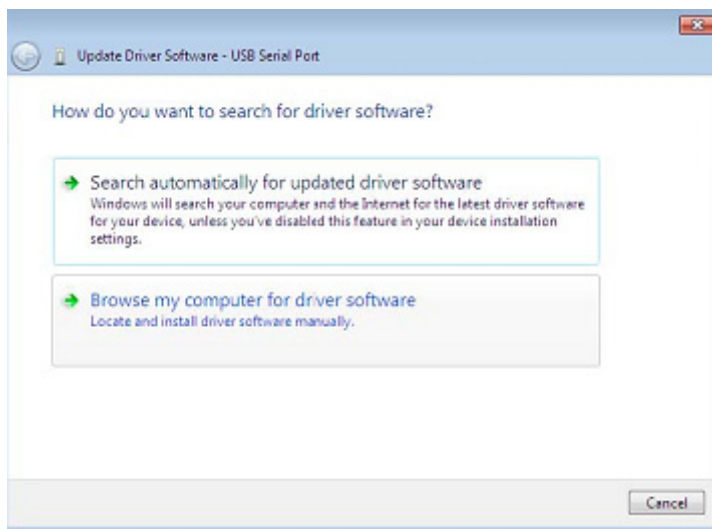


The Device Manager will still show a device under Other Devices but in addition to this there is a new entry under Universal Serial Bus Controllers indicated in the screenshot above as the USB Serial Converter A. This indicates the bus layer of the driver is installed. Installing the Virtual Com Port layer of the driver is almost a repeat of the last few steps.

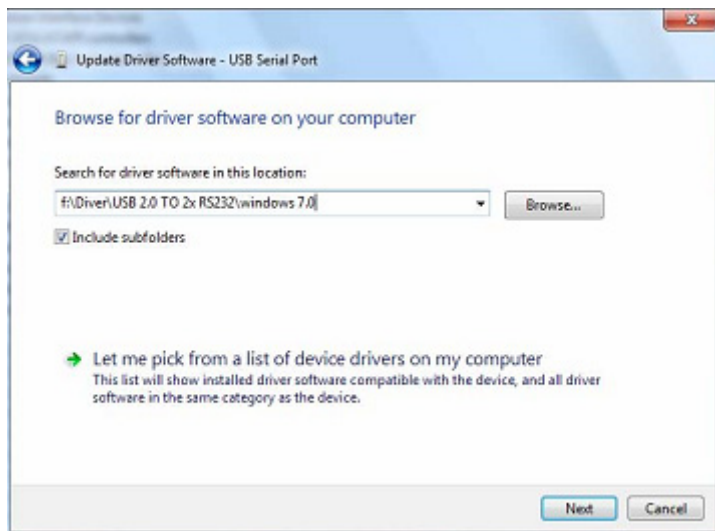
Step 11: Right click on the other device to bring up a menu as shown below. From the displayed menu select “Update Driver Software...” This then displays the option for an automatic search or a manual search.



Step 12: Select the second option to browse manually.



Step 13: Click “Browse” and choose the corresponding OS driver in CD. Click “Next” to continue

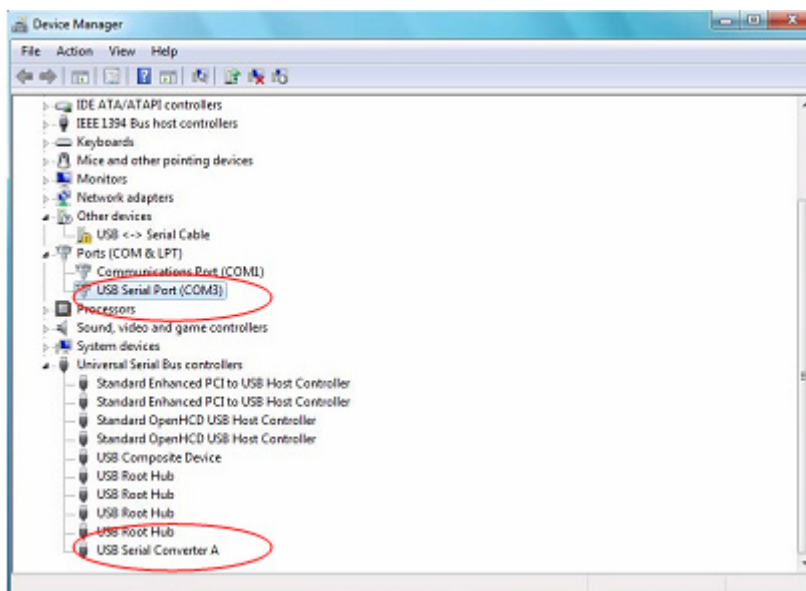
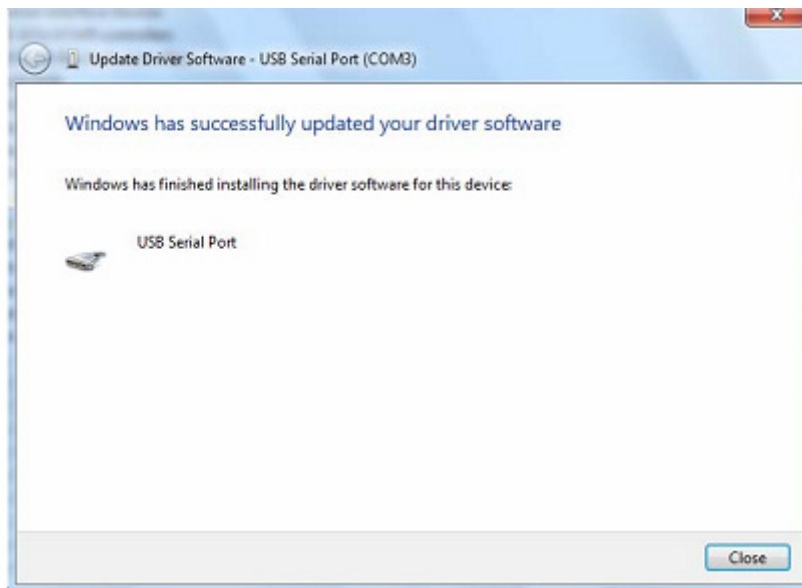


Step 14: When the installation has finished a completion screen is displayed.

Installing driver software...



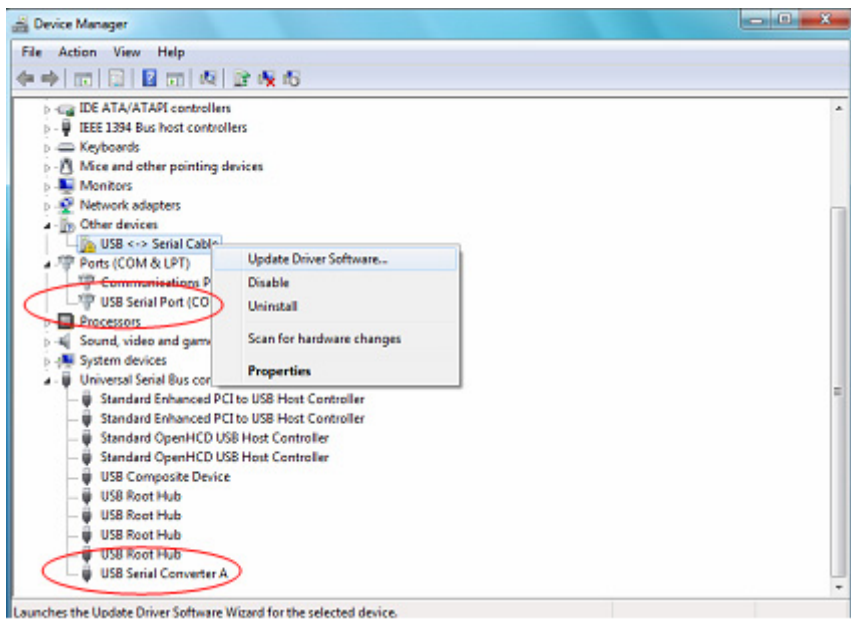
Step15: Press Close to close this window and go back to the Device Manager Window.



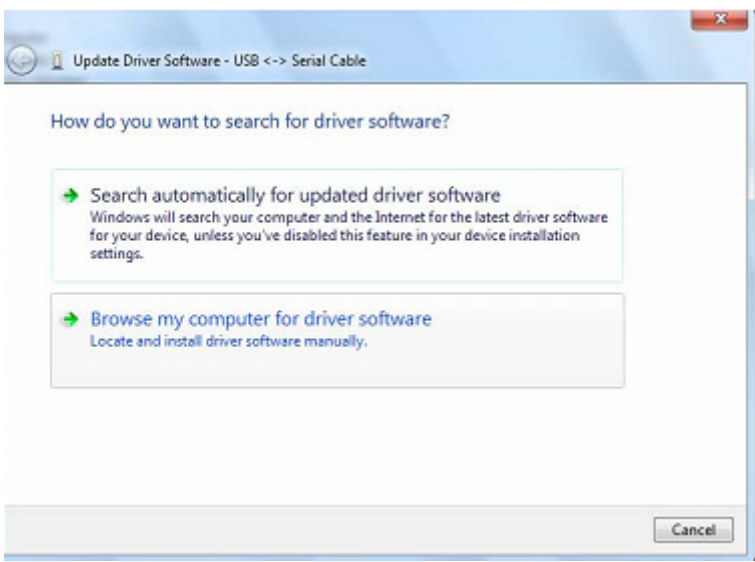
This time the Device Manager does not have a usb <->Serial Cable entry under Other Devices but does show entries under Universal Serial Bus Controllers and Ports (COM & LPT). The above screen shot displays a correct installation. The device is now ready to use on COM3.

NOTE: Not all devices will install to COM3. The COM port allocation is determined by the installation wizard on the basis of the next free com port as designated in the PC registry.

Step 16: Right click on the other device to bring up a menu as shown below. From the displayed menu select “Update Driver Software...” This then displays the option for an automatic search or a manual search.



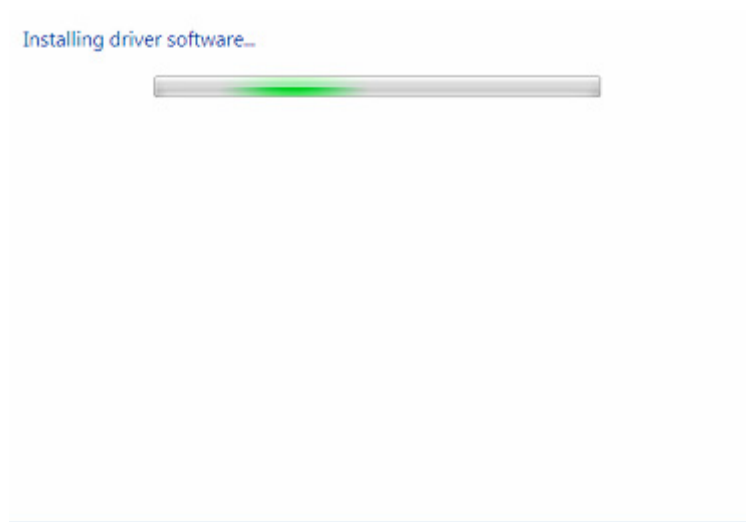
Step 17: Select the second option to browse manually.



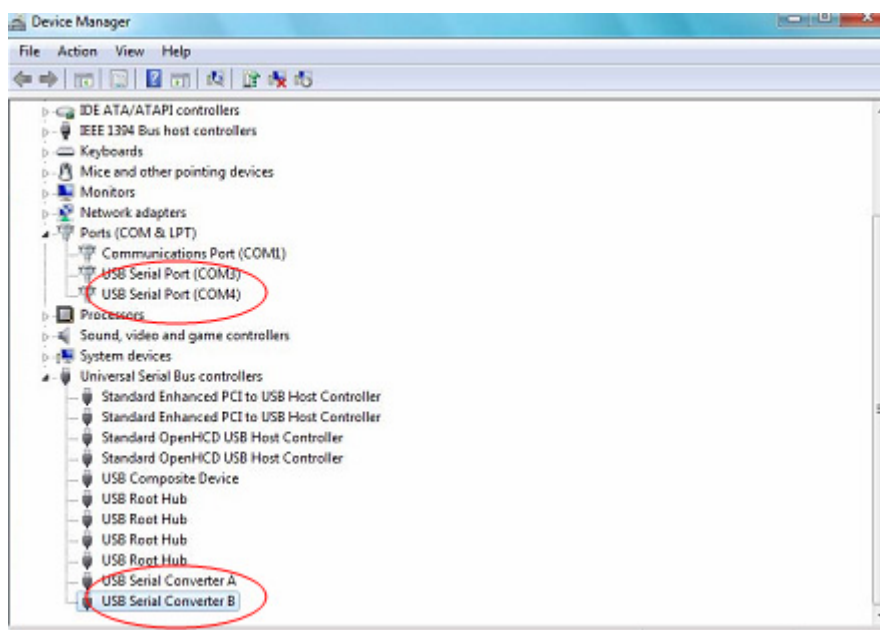
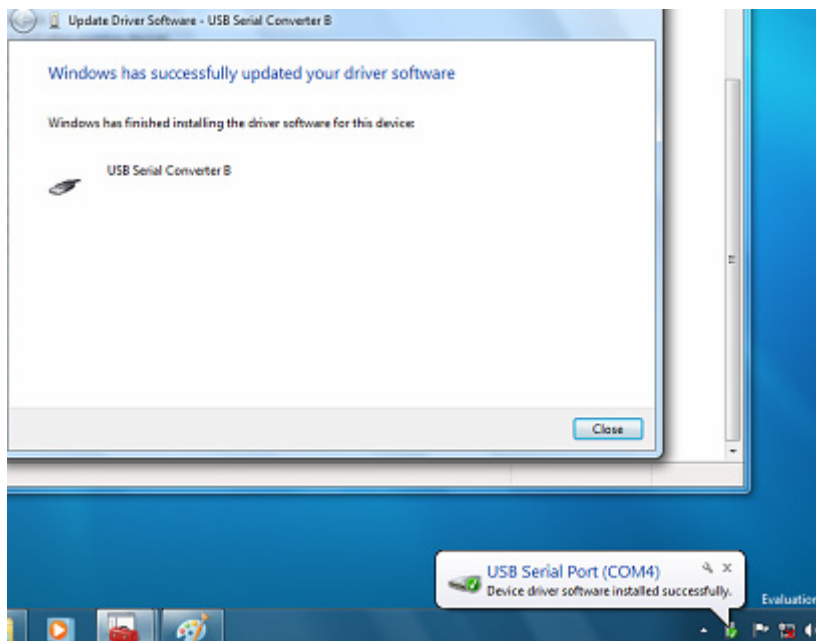
Step 18: Click “Browse” and choose the corresponding OS driver in CD. Click “Next” to continue



Step 19: When the installation has finished a completion screen is displayed.



Step 20: Press Close to close this window and go back to the Device Manager Window.

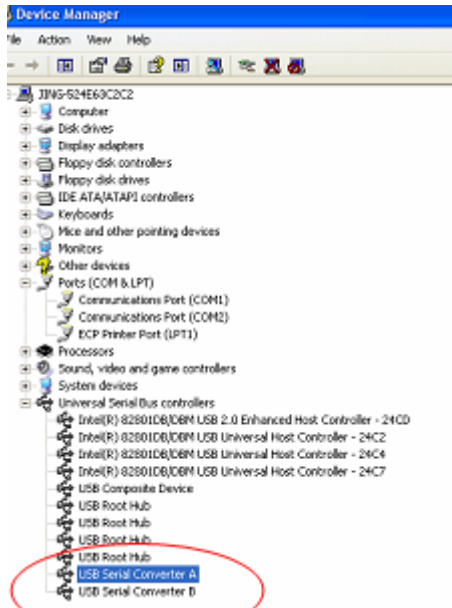


NOTE: Not all devices will install to COM4. The COM port allocation is determined by the installation wizard on the basis of the next free com port as designated in the PC registry.

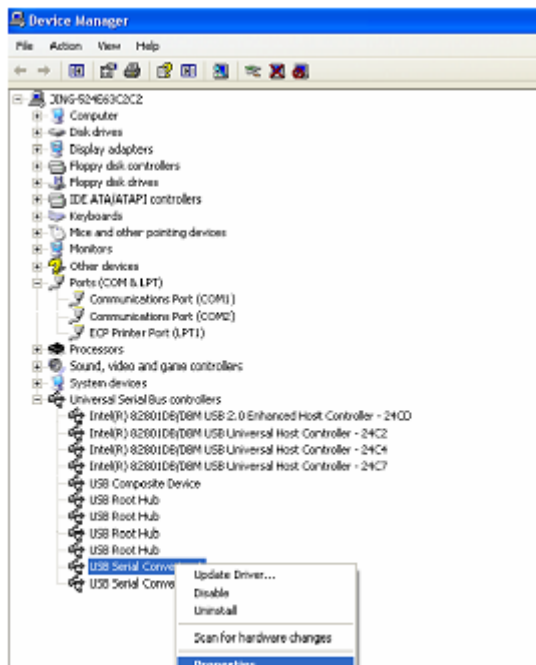
Step 21: Installation finished.

Remarks:

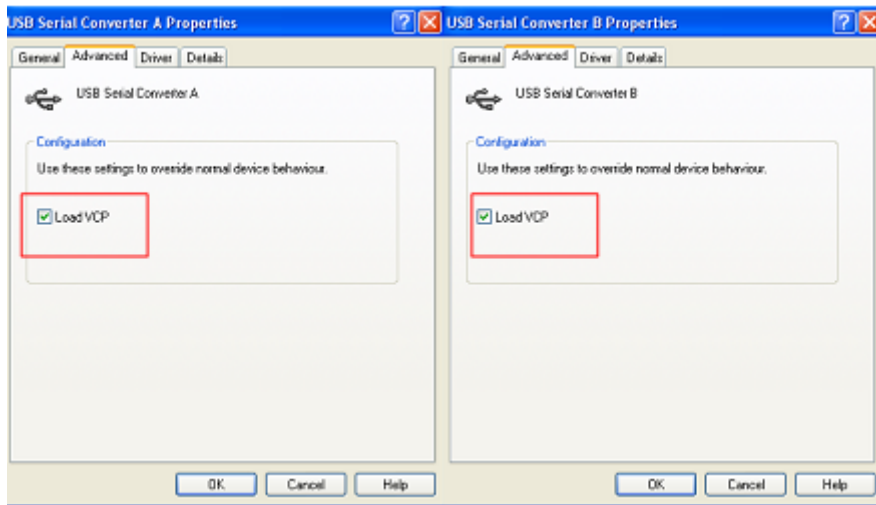
After installation, if you can see “USB Serial Converter” from the “Device Manager”, but can’t see “USB Serial Port(COM3/COM4)”, please continue next steps.



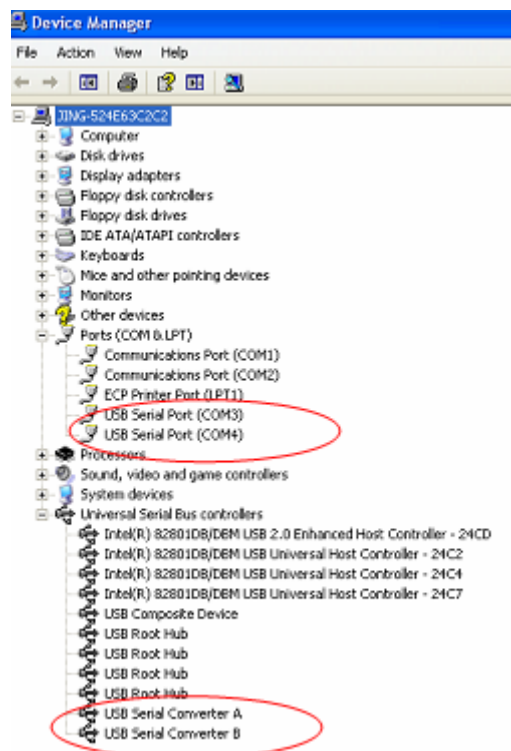
Step A: Right click “USB Serial Converter A/ USB Serial Converter B”, then click “Properties”.



Step B: Select “Load VCP” in the “Advanced”, click “OK”.



Step C: Move out USB 2.0 TO 2* RS232 on your computer. Connect the device to an old USB port on your PC again, now it's ok , please refer to the following chart:



Congratulations, installation is successful.

Uninstalling FTDI Devices

With the release of Microsoft Windows 7/8/8.1, the FTDI uninstaller has been rendered unusable due to Windows Resource Protection preventing the executable from deleting driver files and associated registry values. Windows 7/8/8.1 will only allow the system itself to modify files and registry values in these locations. Devices can be removed using the Device Manager by simply right-clicking on the mouse and selecting "Uninstall". This will delete the associated registry entries for that device only. Windows 7/8/8.1 provides an automatic method to delete driver files via a check box to "Delete the driver software for this device" on the uninstall dialog box.

