



USB 2.0 to IDE/SATA ADAPTER



User Manual DA-70148-4

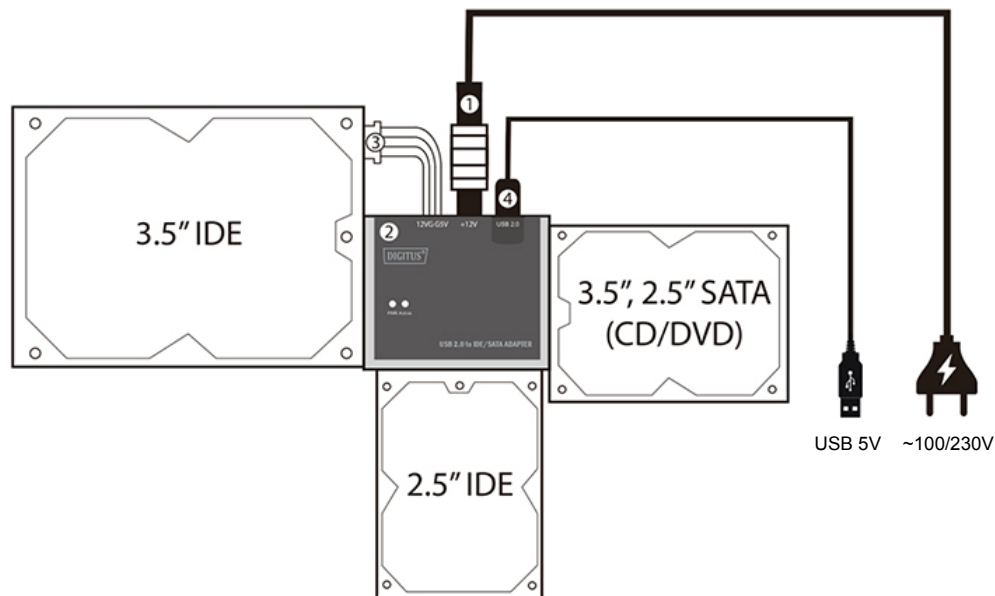
USB 2.0 adapter from Digitus is quick and easy connection without outer casing. Use any 2.5"/3.5" IDE or SATA HDD/SSD as an additional external hard disk/SSD. It is the ideal for service, maintenance, and trouble-free, temporary access to hard disks, e.g. for data backups and system restores.

Characteristics

- Support SATA spread-spectrum transmitter
- Support SATA II Asynchronous Signal Recovery (Hot Plug) feature
- Compliance with USB 2.0 (Hi-Speed USB) electrical specification
- Compliance with USB Mass Storage Class Bulk-Only Transport Specification
- **Support:**
 - 480Mbps High Speed (HS) and 12Mbps Full Speed USB operation
 - ATA/ATAPI-7
 - ATA/ATAPI Ultra DMA Mode
 - ATA/ATAPI PACKET command feature set
 - ATA/ATAPI LBA48 addressing mode
 - dual LUN (Logic Unit Number) for USB to ATA/ATAPI
 - Windows 10, 8, 7, Vista, Windows XP, Mac OS 10.x

Product introduction

1. SATA Port for 2.5"/3.5" SATA Hard Drive
2. IDE Port for 2.5" IDE Hard Drive
3. IDE Port for 3.5" IDE Hard Drive
4. Power/Active Light: It will keep flashing when it is detecting the 2.5"/3.5" SATA Hard Drive or during the Data transferring.



Package Content

- 1 x USB 2.0 - IDE/SATA Adapter
- 1 x IDE (4-pin Molex) cable
- 1 x Power Supply (12V/2A) included
- 1 x User manual

Tips for HDD Installation

For 2.5"/3.5" SATA HDD

- (1) Have SATA Hard Drive connect with ER



- (2) Have the external Power Adapter connect with USB 2.0 TO IDE/SATA ADAPTER
- (3) Have USB 2.0 TO IDE/SATA ADAPTER connect with your computer, then power on, your computer system will detect the SATA HDD.



For 3.5" IDE HDD

- (1) Have the 3.5" IDE HDD connect with USB 2.0 TO IDE/SATA ADAPTER
- (2) Have the external Power Adapter connect with USB 2.0 TO IDE/SATA ADAPTER.



- (3) Have USB 2.0 TO IDE/SATA ADAPTER connect with your computer, then power on, your computer system will detect the IDE HDD.



For 2.5" IDE HDD

(1) Have 2.5" IDE HDD connects with USB 2.0 TO IDE/SATA ADAPTER.



2.5" IDE

(2) Have the external Power Adapter connect with USB 2.0 TO IDE/SATA ADAPTER,

NOTES:

Our product USB 2.0 TO IDE/SATA ADAPTER can support 2.5"/3.5" SATA & IDE HDD, please refer to the below application image.

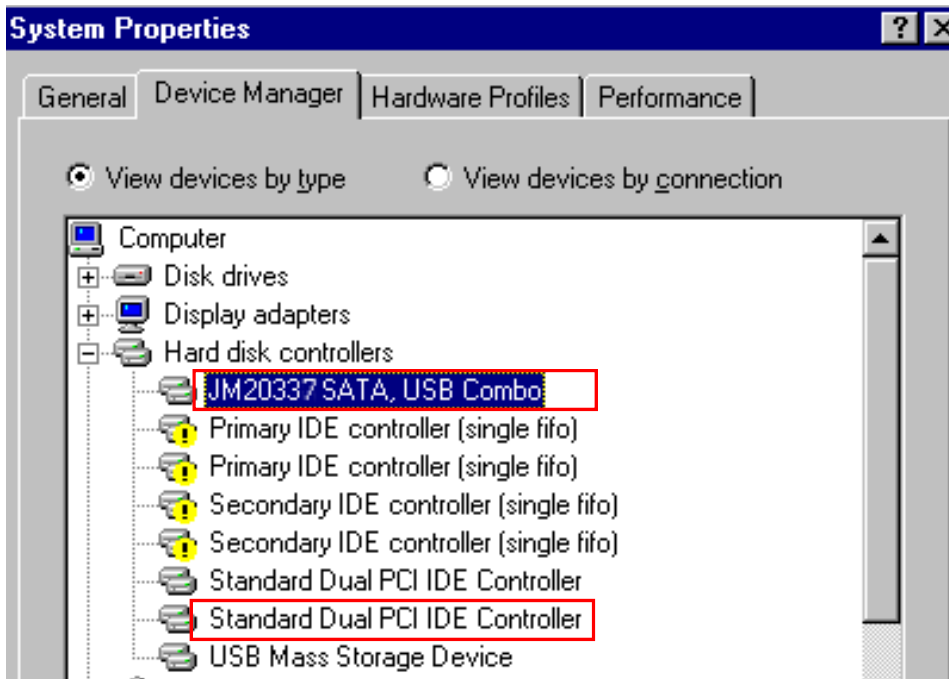
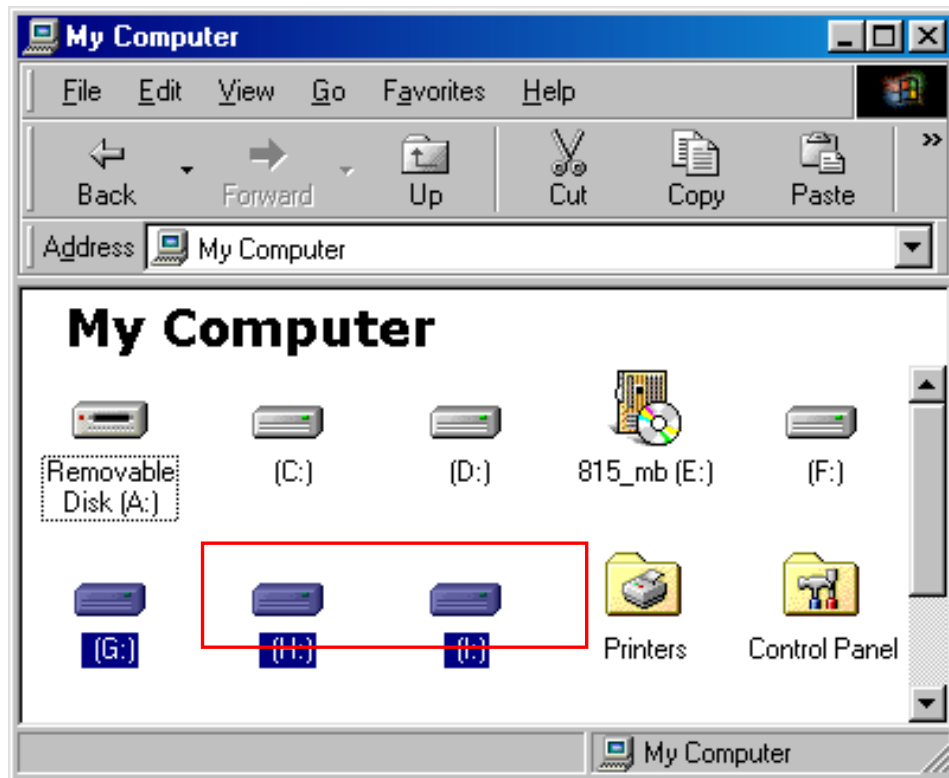


3.5" SATA

2.5" IDE

Verification

Please track the path “My computer” and “My computer” -- > “System Properties” -- > “Device Manager” and expand the item “Hard disk controllers”, you should meet the following screen.



If you use an all new HDD

- 1) Please use “Fdisk” to set the capacity of your HDD, but this will destroy all the data in the HDD.
- 2) Format your HDD by standard procedures, if you can't find your new HDD, please Follow the steps in FAQ-1

Note:

1. “Fdisk” or “Format” will destroy all the data and program in the HDD you select. Please make sure there is not any data in it, or all the data have a backup copy.
2. This product can support 2 HDD/SSDs only simultaneously, and cannot support 2 IDE HDD at the same time.
3. If the computer cannot detect the 2.5 INCH IDE HDD, please check if it's connected with the right direction.

FAQ

Q:

I could see the icon at the right down comer on the screen, but I still couldn't find my external HDD.

A:

1. Please make sure your HDD has been installed correctly.
2. Please make sure your HDD has been set in “Master” position,
3. Please make sure your HDD has been formatted. If no, please format your hard drive first.
4. If you are sure you have installed correctly all the hardware and software, please follow the steps as below to catch your HDD.
 1. Enter “Control Panel” and enter “System” icon
 2. Double click it to find a “System Manager”.
 3. Find a “Disk drivers” category. There should be 2 drivers, double click the HDD
 4. Find the “Setting” button and choose the option “Removable Drive”
 5. Your computer will automatically assign a new letter to this USB HDD after restarting your computer



Caution

1. If you are not sure what OS you are using, please contact your PC dealer.
2. Please don't put this USB HDD in a humid or high-temperature environment.
3. If your first installation is failed, please firstly remove the wrong device through the path as below: path=Control Panel > System > System Properties > Device Manager > Please remove the items with "?" or "!" mark.

Hereby ASSMANN Electronic GmbH, declares that this device is in compliance with the requirements of Directive 2014/30/EU (EMC), Directive 2014/35/EU (LVD) and the Directive 2011/65/EU for RoHS compliance. The complete declaration of conformity can be requested by post under the below mentioned manufacturer address.

Warning:

This device is a class B product. This equipment may cause some radio interference in living environment. In this case, the user can be requested to undertake appropriate measures to prevent interference.

www.assmann.com

ASSMANN Electronic GmbH
Auf dem Schüffel 3
58513 Lüdenscheid
Germany

