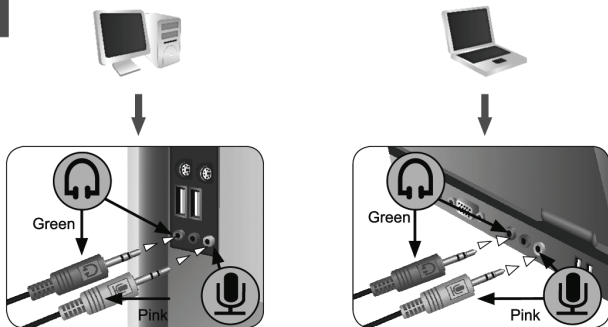




MULTIMEDIA HEADSET



User Manual
DA-12201

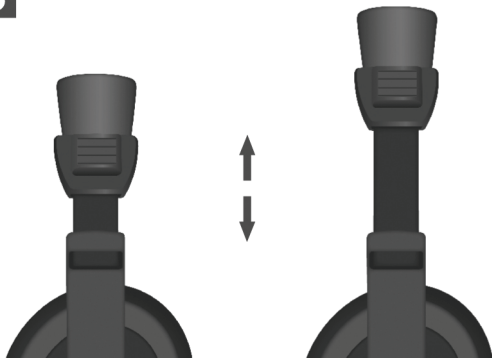
1

Remove the protective caps and connect the headset's jack plugs to your sound card. Make sure that the headphone connector is plugged into the speaker output jack and the microphone connector is plugged into the microphone input jack of the sound card.

2

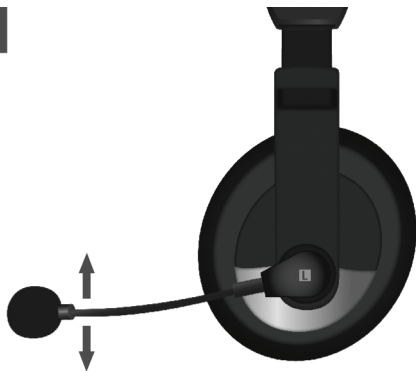
Before placing the headset on your head, make sure that the volume level on the cable remote control is set to minimum.

3



Adjust the length of the headband on both sides of the headset to suit the size of your head.

4



Adjust the microphone to a distance of 2 to 3cm from your mouth.