



**Quick Installation Guide**  
**81160 • 81161 • 81162**

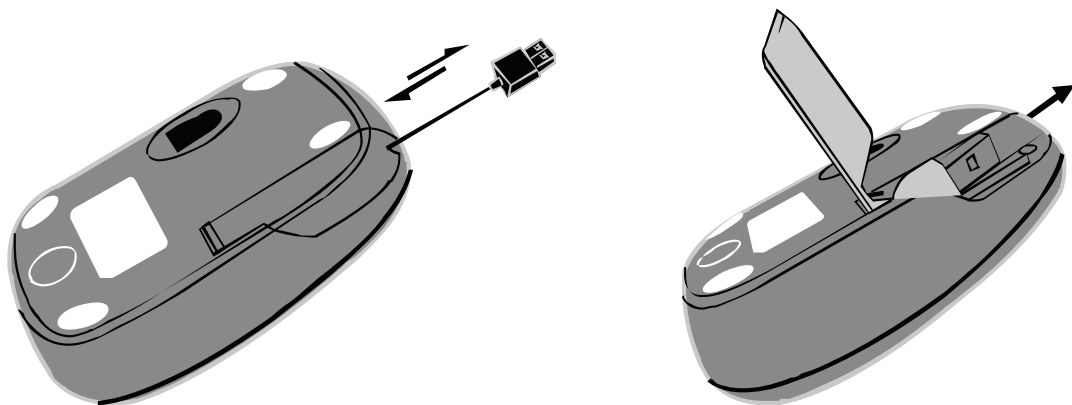
## Main Features

- Space saving on desk, idea for travelers
- Work on most surface, including wood and plastic
- New style, latest design, for notebook users
- Retract and throw away mechanism makes it easier for travellers and laptop users
- Suitable for both right and left hand users and efficiently relief from physical stress
- Basic 4 buttoned design
- Super long working life
- Tracking resolution:800/1600dpi

## Safety Notice

- This product complies with FCC and CE rules
- This product has not serviceable parts. Use of controls or adjustments of procedures other than the user guide may result in danger.

## Function Introduction

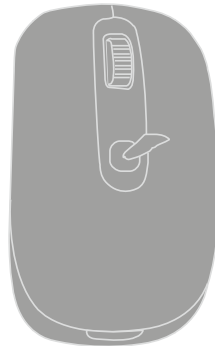


## Retractable Cable

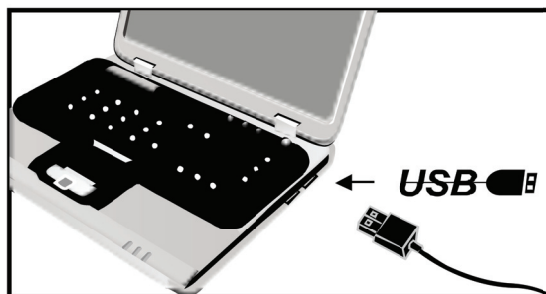
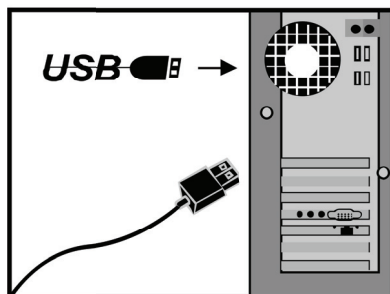
1. Extend the cord: Flip mouse over and open the cap in the back. Pull out the USB cord and adjust to your desire length. Make sure to place the cord in the hold properly and lock the cap.
2. Retract the cord: Open the cap. Slightly pull out the USB cord and the embedded reel will wind the cord automatically.

## Adjustable Resolution

Just click the DPI button and the resolution will change between 800dpi and 1600 dpi freely. (default setting: 800dpi)



## Installation



**Plug the mouse into the computer by USB port.**