



## 4X4 HDMI 2.0 Matrix Switch, 4K/60Hz



### Quick Installation Guide DS-43306

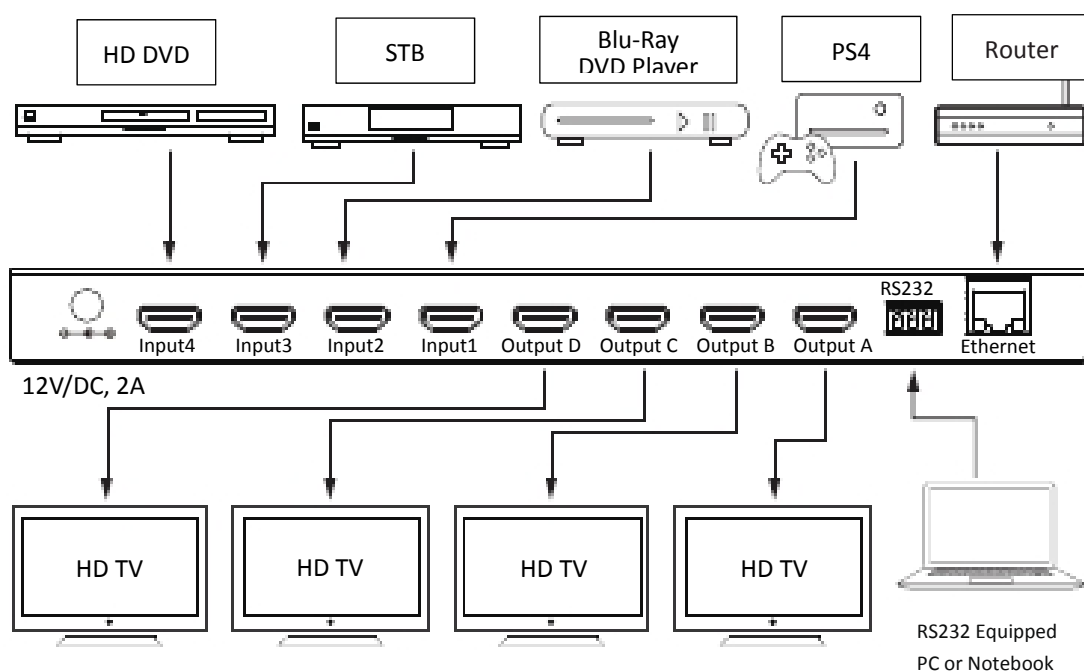
All brand names and trademarks are properties of their respective owners

## Introduction

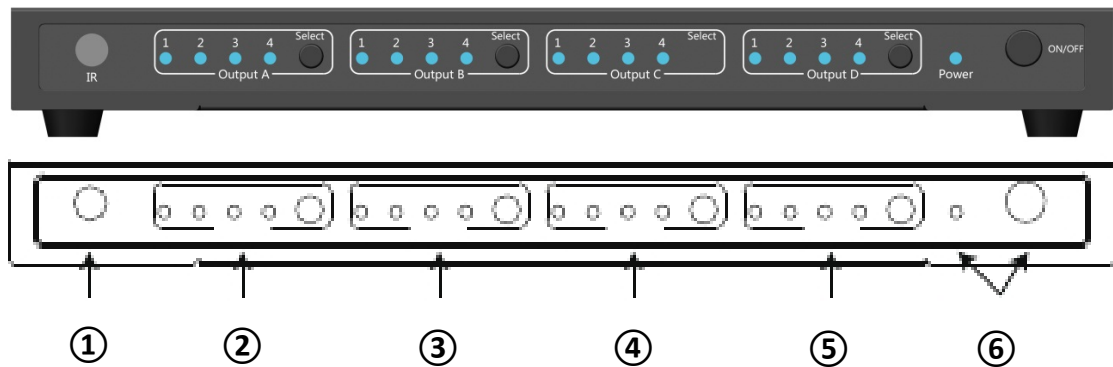
This 4x4 4K UHD Matrix provides a high level of audio and video performance with support for resolutions up to 4K@60Hz (YUV 4:4:4, 8-bit) and pass-through support of digital audio formats including LPCM 7.1 (with sampling rates up to 192kHz), bitstream, and HD bitstream. The 4 HDMI inputs and 4 HDMI outputs support fully matrixed switching. A sophisticated WebGUI interface supports storing and recalling up to four routing presets, making remote control and configuration of the unit a breeze.

## Features

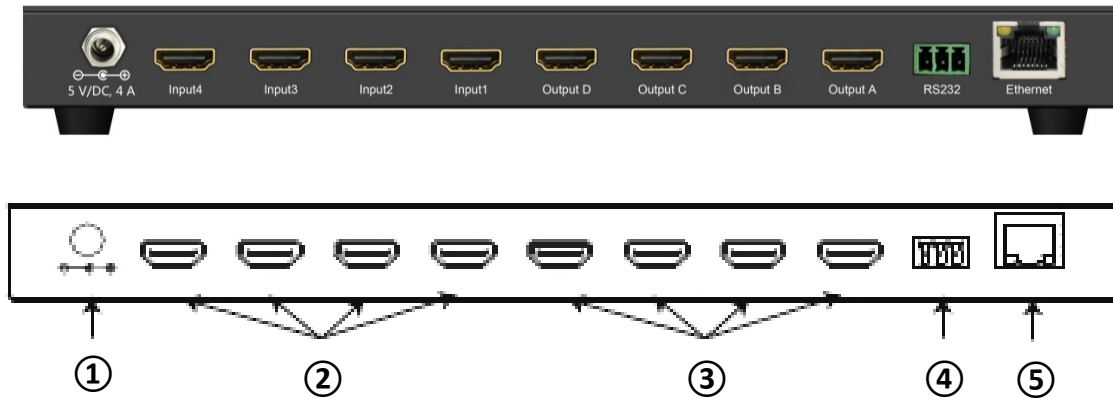
- HDMI inputs and outputs with 18Gbps (600MHz) 4K UHD support
- DVI 1.0 compliant with the use of an HDMI-DVI adaptor
- HDCP 1.4 and 2.2 compliant
- HDR 4:2:2 12 Bit Support
- Supports HD resolutions up to 3840x2160@60 Hz (YUV 4:4:4, 8-bit) & 4096x2160@60 Hz (YUV 4:4:4, 8-bit)
- Supports 48-bit Deep Color up to 1080p60
- Supports 3D signal bypass
- Supports pass-through of LPCM 7.1, bitstream and HD bitstream audio formats over HDMI
- Supports storing and recall of up to four routing presets
- Controllable via front-panel buttons, RS-232, telnet, WebGUI, and IR remote



## Operation Controls And Functions



- ① Remote control sensor
- ② Input Select/Indicators (A):  
Press the “HDMI OUT A” button repeatedly to switch to your desired source, and the LED will illuminate to indicate which input source is being selected, and routed to HDMI A display.
- ③ Input Select/Indicators (B):  
Press the “HDMI OUT B” button repeatedly to switch to your desired source, and the LED will illuminate to indicate which input source is being selected, and routed to HDMI B display.
- ④ Input Select/Indicators (C):  
Press the “HDMI OUT C” button repeatedly to switch to your desired source, and the LED will illuminate to indicate which input source is being selected, and routed to HDMI C display.
- ⑤ Input Select/Indicators (D):  
Press the “HDMI OUT D” button repeatedly to switch to your desired source, and the LED will illuminate to indicate which input source is being selected, and routed to HDMI D display.
- ⑥ Power Switch & LED Indicator:  
The LED will illuminate when the power is turned on.



**① Power:**

Plug the 12V/2A DC power supply adapter into the unit and connect the adaptor to AC wall outlet.

**② HDMI inputs 1~4:**

Connect to the HDMI output of your source equipment such as DVD player or set-top-box.

**③ HDMI outputs A~D:**

Connect each of these output ports to the HDMI input of an HDMI display.

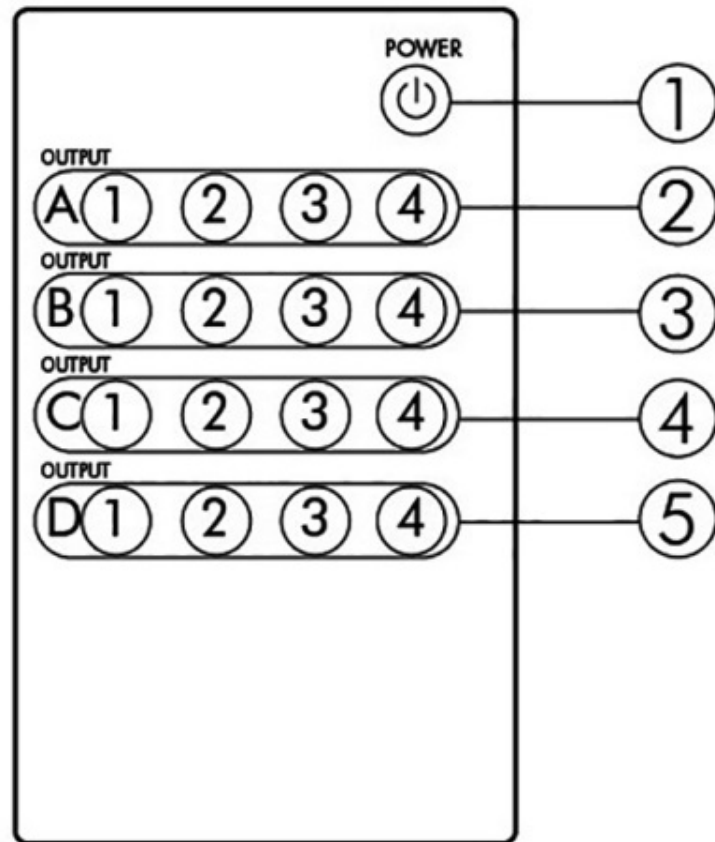
**④ RS232 Communication Port:**

Connect to a PC or Laptop via RS232 terminal to D-Sub 9-pin cable for the transmission of RS-232 commands.

**⑤ Ethernet:**

Connect to an internet or network activate device.

## Remote Control



- ① **Power:**  
Press the button to turn on/off the unit.
- ② **Input Select for HDMI OUT A:**  
Press 1, 2, 3 or 4 to select the desired input source for HDMI OUT A.
- ③ **Input Select for HDMI OUT B:**  
Press 1, 2, 3 or 4 to select the desired input source for HDMI OUT B.
- ④ **Input Select for HDMI OUT C:**  
Press 1, 2, 3 or 4 to select the desired input source for HDMI OUT C.

## Specifications

HDMI version	HDMI 2.0
HDCP version	HDCP 2.2
Video Bandwidth	18G
HDMI resolution supported	1920*1080@60Hz 1920*1080 3D@24Hz 1080P@120Hz 4K2K@30Hz 4K2K@60Hz(4:2:0) 4K2K@50/60Hz(4:4:4)
HDMI connector	Type A, 19 pin, Female
Operation temperature	0°C ~ 50°C
Relative humidity	0 ~ 95%(no condensation)

Note: Specifications are subject to change without notice.

## Package Contents

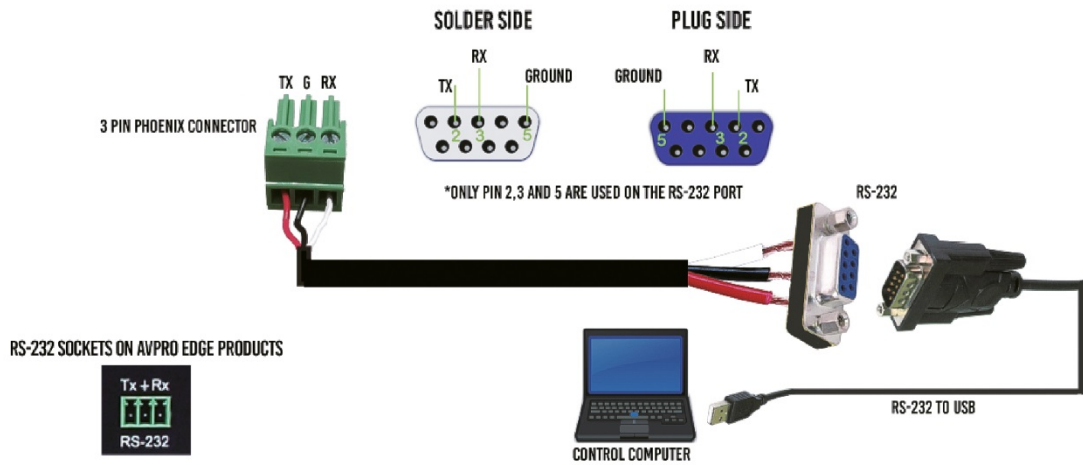
Before attempting to use this unit, please check the packaging and make sure the following items are contained in the shipping carton:

- 1) Main unit
- 2) 12 V/2A DC Power Supply
- 3) Remote Control
- 4) User's Manual

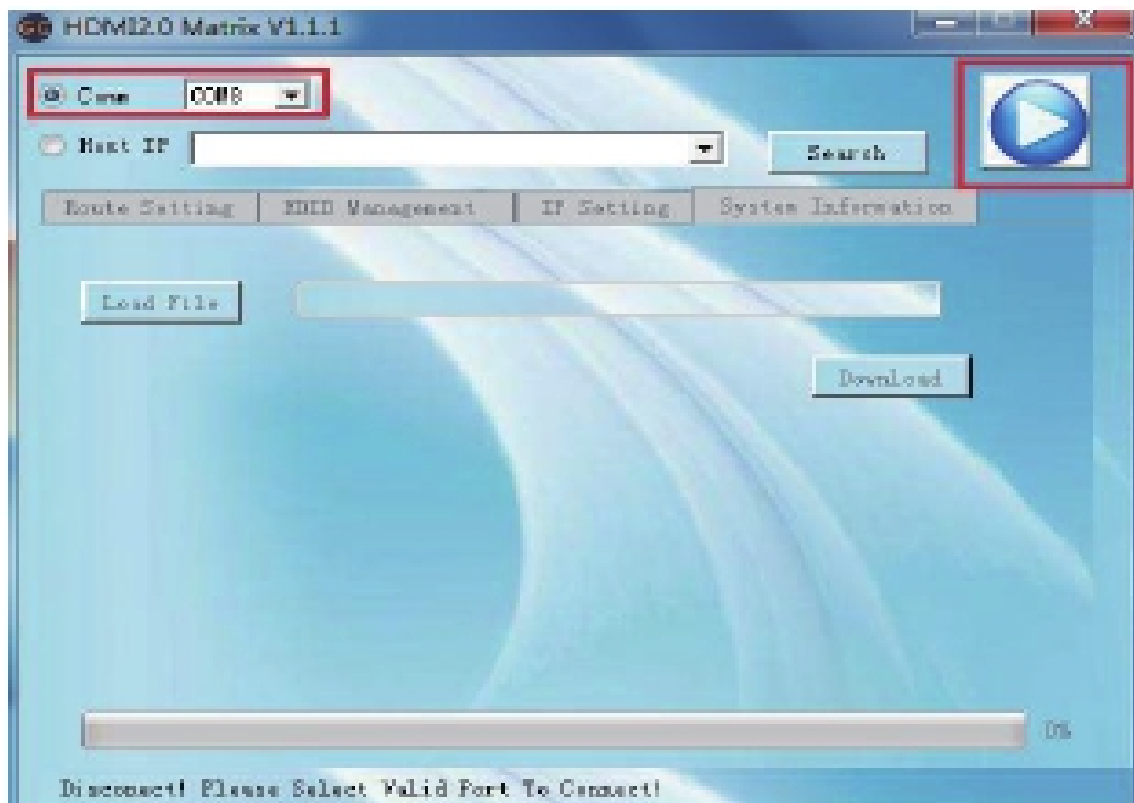
## PC Software Control

### Connect by RS232

1. Connect PC to device by USB to RS232 tool



2. Open "HDMI2.0 Matrix.exe"
3. select the "comm" and click "Start" button into PC Software Control Interfac



## PC Software Control Interface: Route Setting



At the Route Setting interface, you can set any input port to any output port one by one, or anyone input port to all output port.

### Connect by LAN

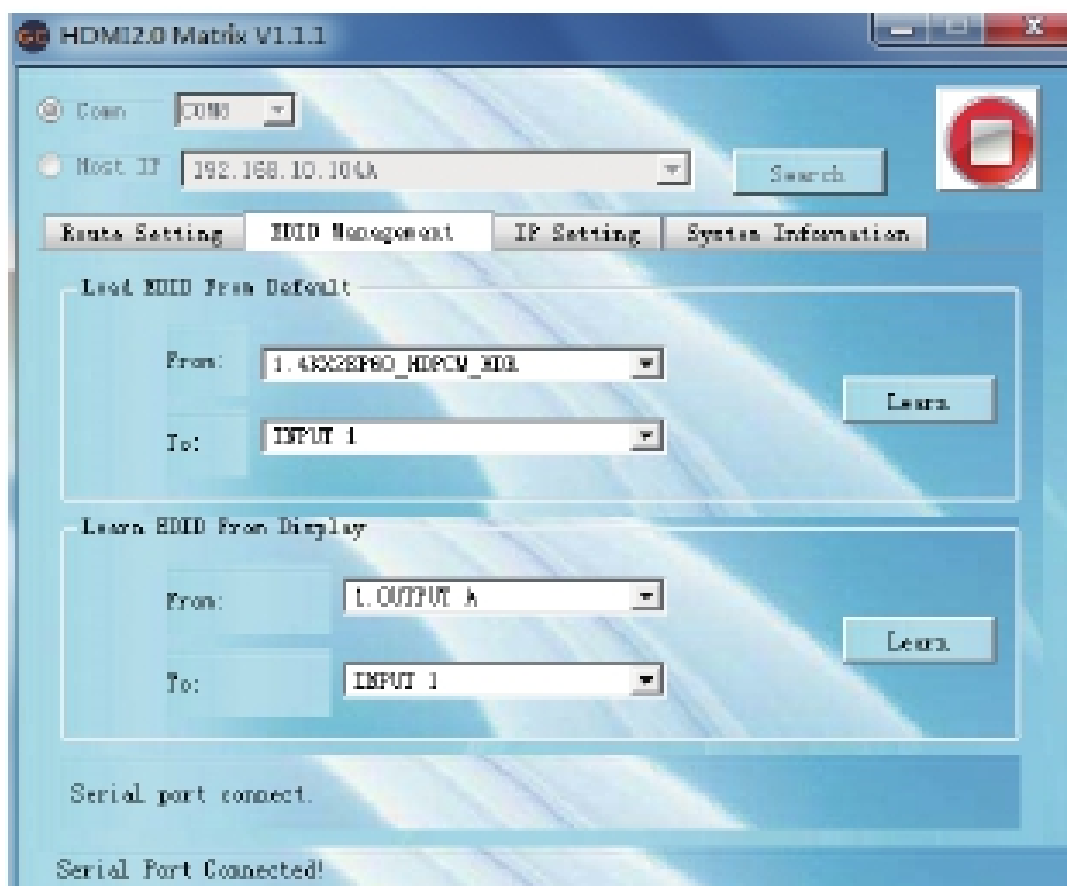
1. Use an Ethernet cable to connect the LAN port on the switch to an unused, active port on the router
2. Open "HDMI2.0 Matrix.exe"
3. Select the "IP Host" and enter the IP address click "Start" button into PC Software Control Interface

Note: see Web GUI Control below for how to get the IP address





## PC Software Control Interface: EDID Management



At EDID Management interface, you can load default EDID to any input port, you can also learn EDID from any output port to any input port

## PC Software Control Interface: IP Setting



Set IP settings such as:

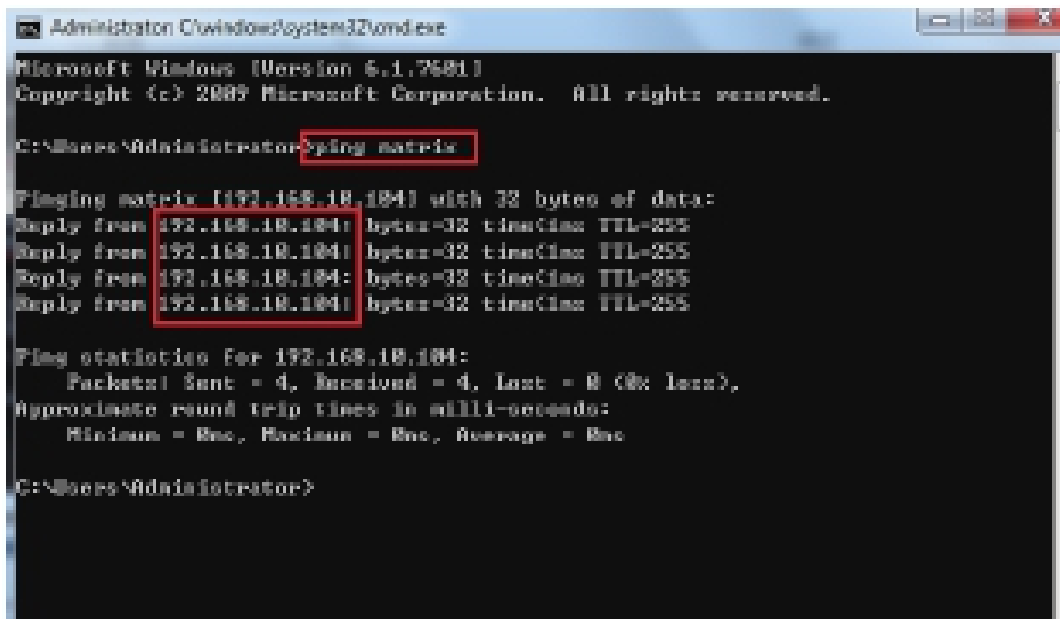
- Enable DHCP
- HostIP
- Net Mask
- Gateway

NOTE: Default IP setting is "Enable DHC

## Web GUI Control

1. Use an Ethernet cable to connect the LAN port on the switch to an unused, active port on the router.
2. Get the IP Address by CMD.exe

Enter "ping matrix" into CMD windows as following picture shows



```
Administrator C:\windows\system32\cmd.exe
Microsoft Windows [Version 6.1.7601]
Copyright (c) 2009 Microsoft Corporation. All rights reserved.

C:\Users\Administrator>ping matrix

Pinging matrix [192.168.10.104] with 32 bytes of data:
Reply from 192.168.10.104: bytes=32 time=1ms TTL=255
Reply from 192.168.10.104: bytes=32 time=1ms TTL=255
Reply from 192.168.10.104: bytes=32 time=1ms TTL=255
Reply from 192.168.10.104: bytes=32 time=1ms TTL=255

Ping statistics for 192.168.10.104:
    Packets: Sent = 4, Received = 4, Lost = 0 (0% loss),
    Approximate round trip times in milli-seconds:
        Minimum = 1ms, Maximum = 1ms, Average = 1ms

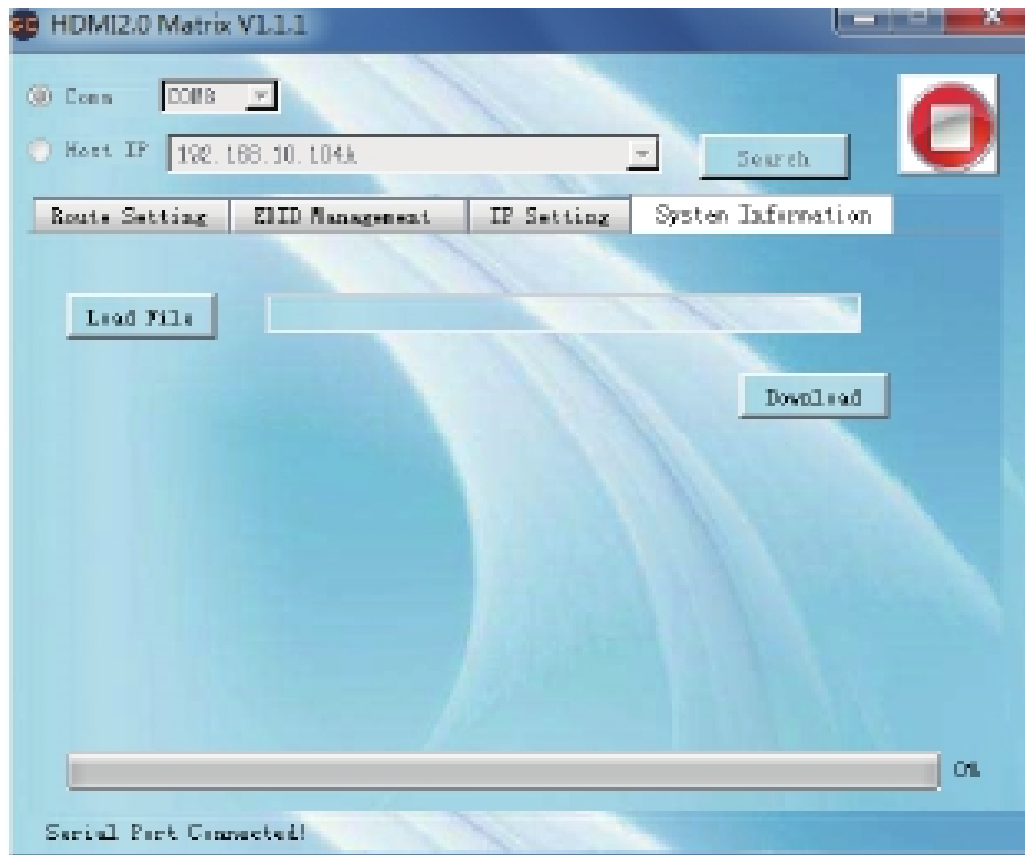
C:\Users\Administrator>
```

3. Enter the IP Address into any web browser as following picture shows



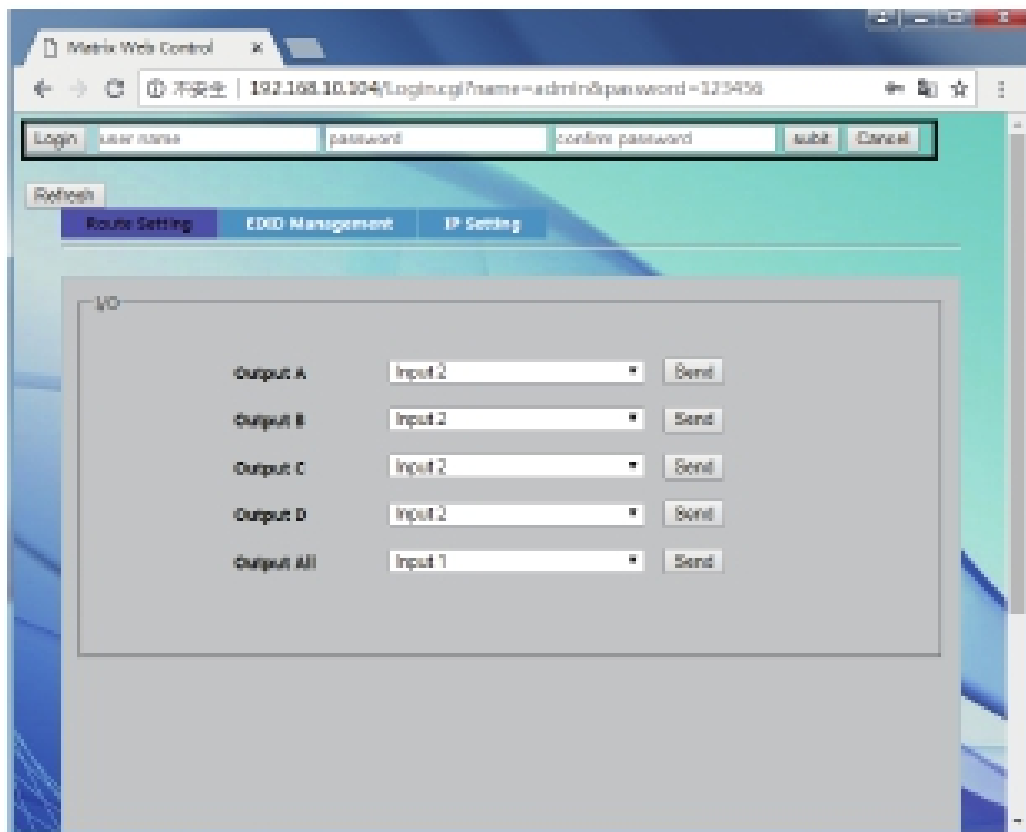
4. Enter User name and Password to log in the Web GUI  
Default User name: admin default Password: 123456

## PC Software Control Interface: System Information



At System Information you can Upgrade the Firmware of Matrix Switch  
NOTE: The Firmware File need to be supplied by the manufacturer

## Web GUI Interface: Regist User name and Password

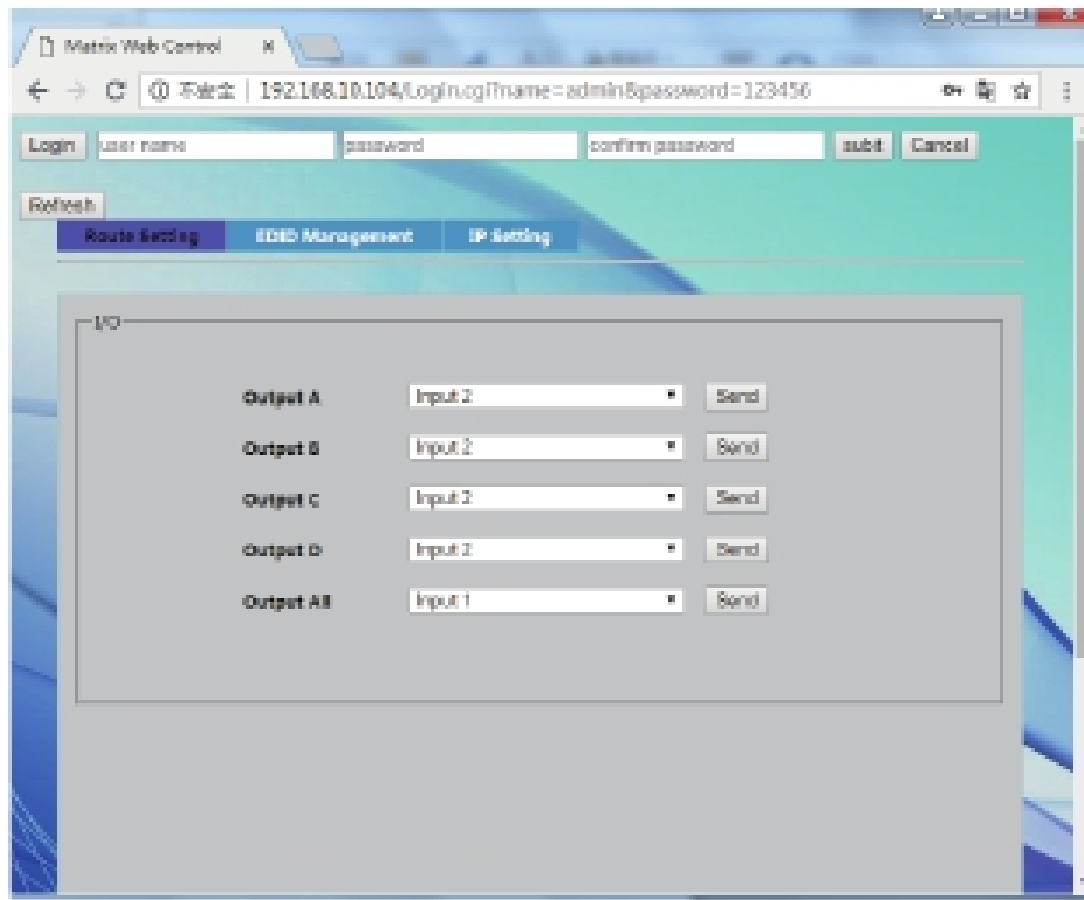


Use the step to quickly and immediately set User name and Password

Default User name : admin

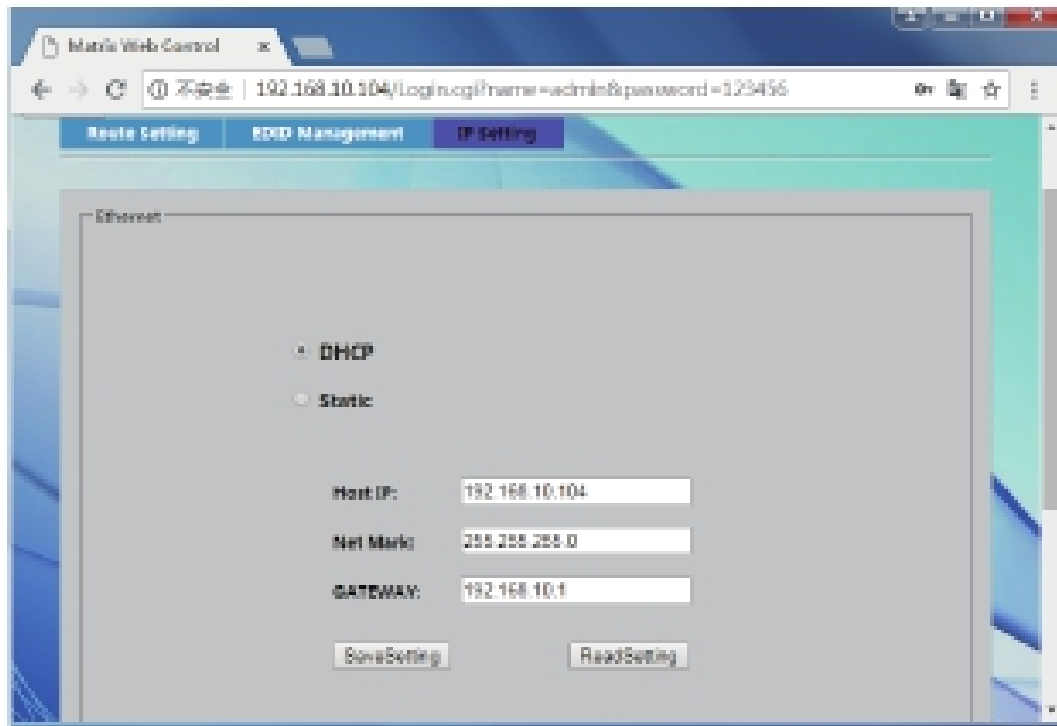
Default Password : 123456

## Web GUI Interface: Route Setting



At the Route Setting interface, you can set any input port to any output port one by one, or anyone input port to all output port.

## Web GUI Interface: IP Setting

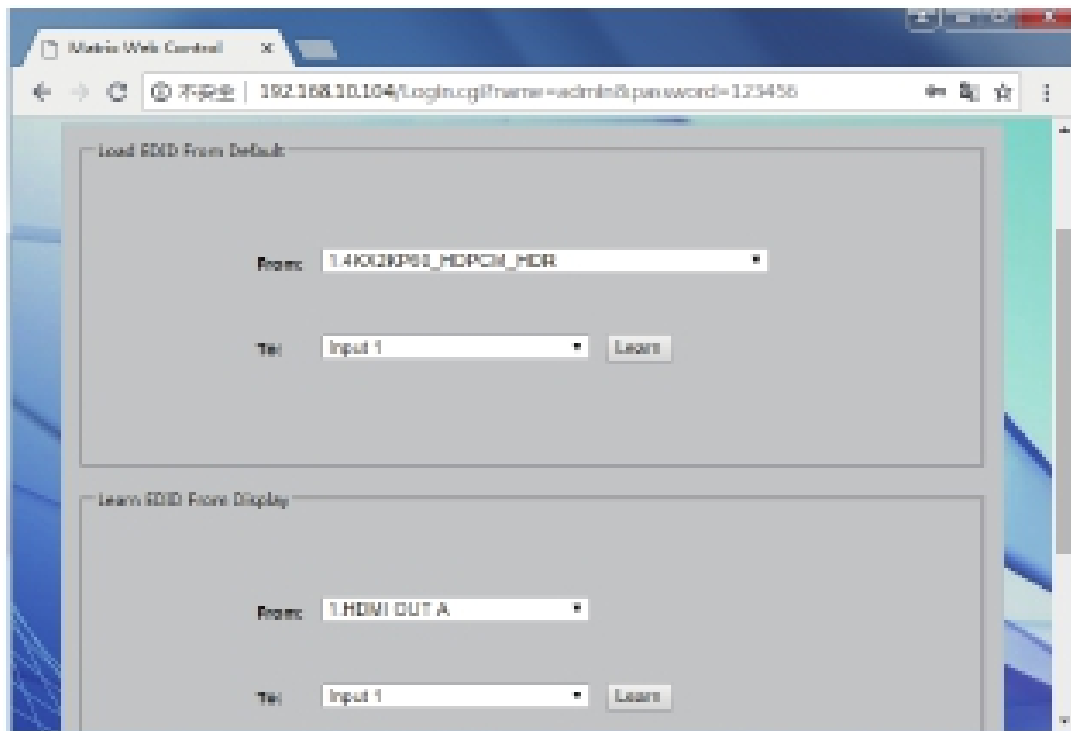


Set IP settings such as:

- Enable DHCP
- HostIP
- Net Mask
- Gateway

NOTE: Default IP setting is "Enable DHCP"

## Web GUI Interface: EDID Management



At EDID Management interface, you can load default EDID to any input port, you can also learn EDID from any output port to any input port

Hereby Assmann Electronic GmbH, declares that the Declaration of Conformity is part of the shipping content. If the Declaration of Conformity is missing, you can request it by post under the below mentioned manufacturer address.

**www.assmann.com**

Assmann Electronic GmbH  
Auf dem Schüffel 3  
58513 Lüdenscheid  
Germany

