



2-Port Serial Interface card, PCI

Universal PCI Multi-Port Communication Board



Quick Installation Guide

Version 1.0

Introduction

DIGITUS I/O series, a line of Universal PCI Multi-port Serial Communication Board, is a 32-bit Plug-n-Play PCI Bus card equipped with independent high-speed standard serial interfaces. The card attaches 1 / 2 / 4 independent DB9 or DB25 serial ports on your system for industrial communication and automation applications. It is compatible with both 3.3V or 5V and 32-bit or 64-bit PCI Bus, allowing this multi-port serial card to be installed in virtually any available PC system and compatible with all major operating systems. Users do not need to manually set jumpers to configure I/O addresses and IRQ locations. The system will search the device automatically eliminating any conflicts with other cards or devices.

Features

- Fully compatible with PCI Spec. Ver2.2 / 2.1 standard.
- Supports both 64-bit & 32-bit PCI Bus and 3.3V & 5V connector keys.
- Expands 2 independent RS-232 serial ports in one single board. (Note)
- High speed 16C650 compatible communication controller with SUN1999 single chip hardware flow control to guarantee no data loss and best technical support.
- Each serial port has built-in 32 byte hardware FIFO.
- Data transmission speeds up to 115.2 Kbps.
- Certified by Microsoft WHQL, CE, FCC ClassB approval.
- Support Microsoft Windows, DOS, Linux, and SCO Unix major operation system.
- Ready for the Intel® and AMD® 32 and 64-bit platform system.

Package List

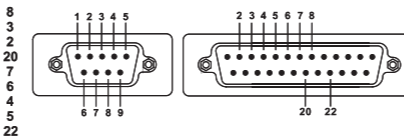
Please check if the following items are present and in good condition upon opening your package. Contact your vendor if any item is damaged or missing.

- RS-232 Universal PCI Multi-Port Communication Board
- Quick Installation Guide (this document)
- CD Driver
- User Manual
- Serial Cable (Note)
2 ports series : Do NOT need any connection cable.

NOTE:

We provide 1, 2 or 4 ports product for users selection. The expansions COM ports and cable accessory will depend on what product you bought.

Specification

Model	Universal PCI Communication Board
Mode of Operation	HandShaking Full-Duplex
Controller	SUN1999 16C650 Compatible UART
Bus Interface	64-bit & 32-bit PCI Bus / 3.3V & 5V Connector Key
Number of Ports	1 / 2 / 4 ports with DB9 or DB25 Male Type
Bracket	Standard 121 mm, Low Profile 79.2 mm
IRQ & IO Address	Assigned by BIOS / O.S.
FIFO	32 byte hardware FIFO
Baud Rate	75 ~ 115,200bps
Data Bit	5, 6, 7, 8
Stop bit	1, 1.5, 2
Parity	Even, Odd, None, Mark, Space
Flow Control	None, Xon/Xoff, HardWare
Pin Assignment	TxD, RxD, RTS, CTS, DTR, DSR, DCD, RI, GND 
Driver Support	Windows CE 5.0 / 3.1 / 9x / NT / 2000 / XP / 2003 / Vista / 7 / 8.x / 10; Linux 2.2.x, 2.4.x, 2.6.x; DOS
Regulatory Approvals	CE, FCC / Microsoft WHQL
Operation Temperature	0°C ~ 60°C (32°F ~ 140°F)

Driver Installation

In order to ensure proper operation of your PCI serial board, the driver will be in the CD bound with your product. You can specify the location (folder) as below:

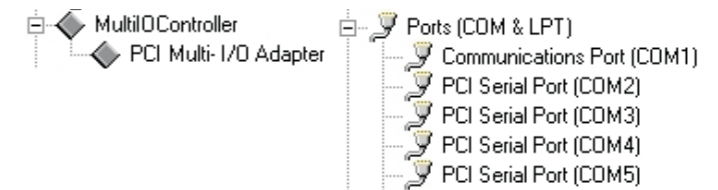
Operation System	Driver Location
Windows 10 (x86 / x64) / Windows Server 2016 (x64)	\\WIN_10
Windows Vista / 7 / 8.x (x86 / x64)	\\WIN_7_8
Windows Server 2008 / 2012 / 2012R2 (x64)	\\WIN_7_8
Windows XP SP3 (x86 / x64)	\\WIN_XP
Windows Server 2003 (x32 / x64)	\\WIN_2003
Windows 2000	\\WIN_2000
CE 4.2	\\WINCEWINCE42
CE 5.0	\\WINCEWINCE50
CE 6.0	\\WINCEWINCE60
Linux 2.x / 3.x / 4.x	\\LINUX
DOS	\\DOS

※ You can find the detail of the installation steps in the user manual.

Hardware Verity

Please launch the "Device Manager" to verify hardware installation correctly.

Start > Controller Panel > System > Device Manager

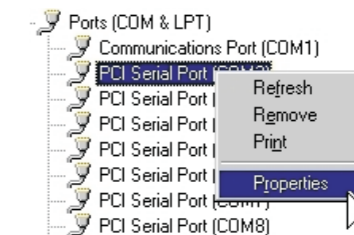


※The number of COM ports will depend on what products you bought.

Port Setting

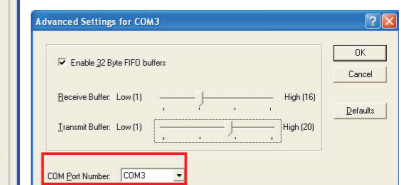
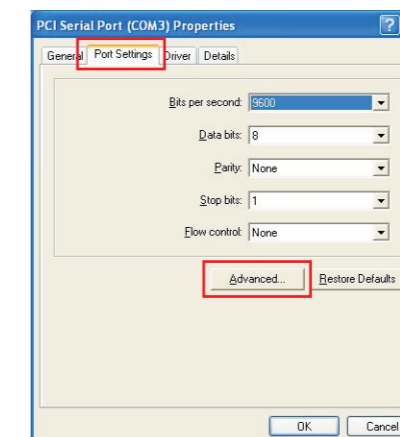
After installing PCI serial board successfully, you can modify the setting for each serial port in device manager.

1. Right click your mouse on the COM port, and select "Properties".



2. Select "Port Setting" page to modify COM port setting.

3. Select "Advanced" icon, you can modify COM port number and FIFO.



Herby Assmann Electronic GmbH, declares that the Declaration of Conformity is part of the shipping content. If the Declaration of Conformity is missing, you can request it by post under the below mentioned manufacturer address.
 www.assmann.com
 Assmann Electronic GmbH
 Auf dem Schüffel 3
 58513 Lüdenscheid
 Germany

