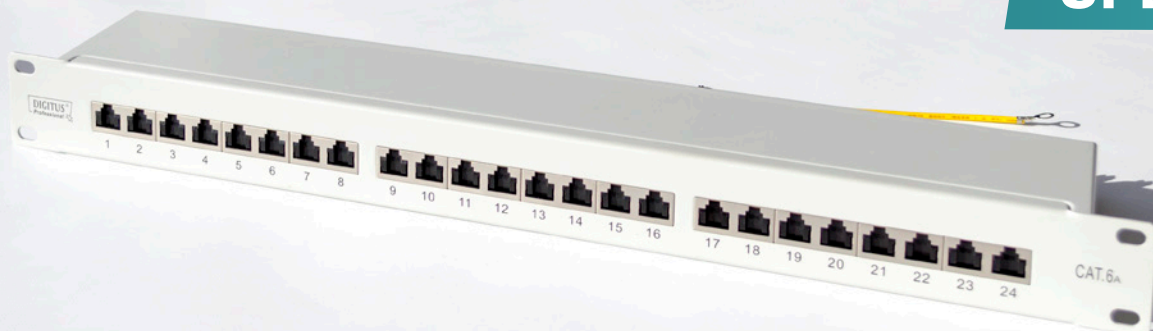


**UPDATE**



DIGITUS® Professional  
**19" PATCH PANEL (LSA+) CAT. 6<sub>A</sub>, SHIELDED**

We improved the **DIGITUS® Professional (DN-91624S-EA) Cat. 6<sub>A</sub> STP Patch Panel RJ45 24-Port** for you. The manually adjustable cable clamps replace the clamp mounting (cable fixation) and cable ties (strain relief) in order to optimize the set-up time and handling as well as reduce the laborious and time-consuming working steps.

A further benefit of the patch panel is the improved quick-release lock to fixing the housing cover. Hence the lavishly screwing of the housing cover is completely omitted.

**Features:**

- CAT. 6<sub>A</sub> Class E<sub>A</sub> up to 500 MHZ
- Suitable for 10 GBit Ethernet
- Shielded RJ45-jacks, 8P8C
- Housing material: SECC, 1.5 mm galvanized, cold-rolled C-steel acc. EN 14301
- Suitable for 483 mm (19") rack mounting
- 360°-Shielding
- Integrated dust caps
- Cable installation via LSA(+)-strips, color-coded acc. EIA/TIA 568 A & B
- Central ground connection
- Acc. 802.3at PoE+ and 802.3af PoEstandard

**Innovations:**

- Strain relief through adjustable cable clamps
- Cable fixation and derivation of the cable shield due to adjustable cable clamps
- Cable ties are not required: reduction of the installation time
- Quick-release lock to secure the housing cover

