



Tiny USB Wireless 11ac Adapter



Quick Installation Guide

DN-70566-1

Driver Installation

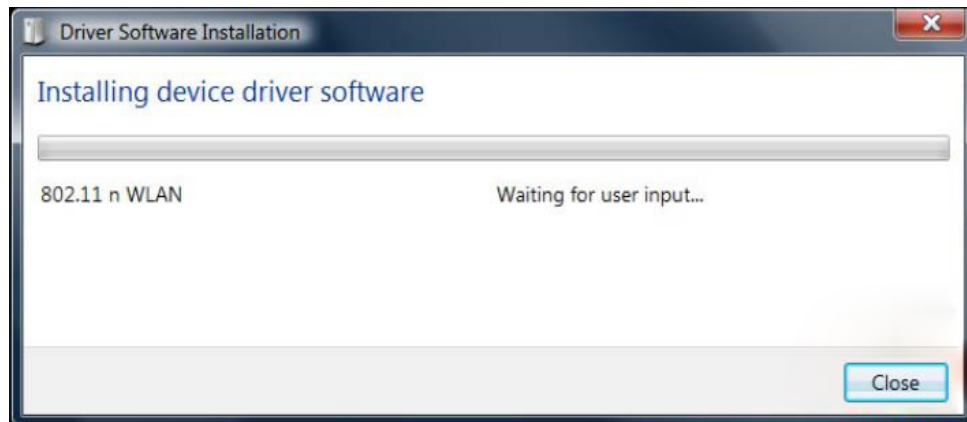
Please follow the following instructions to install your new wireless USB Adapter:

1.1

Insert the USB wireless network adaptor into an empty USB 3.0 port of your computer when computer is switched on. Never use force to insert the adaptor, if you feel it's stuck, flip the card over and try again.

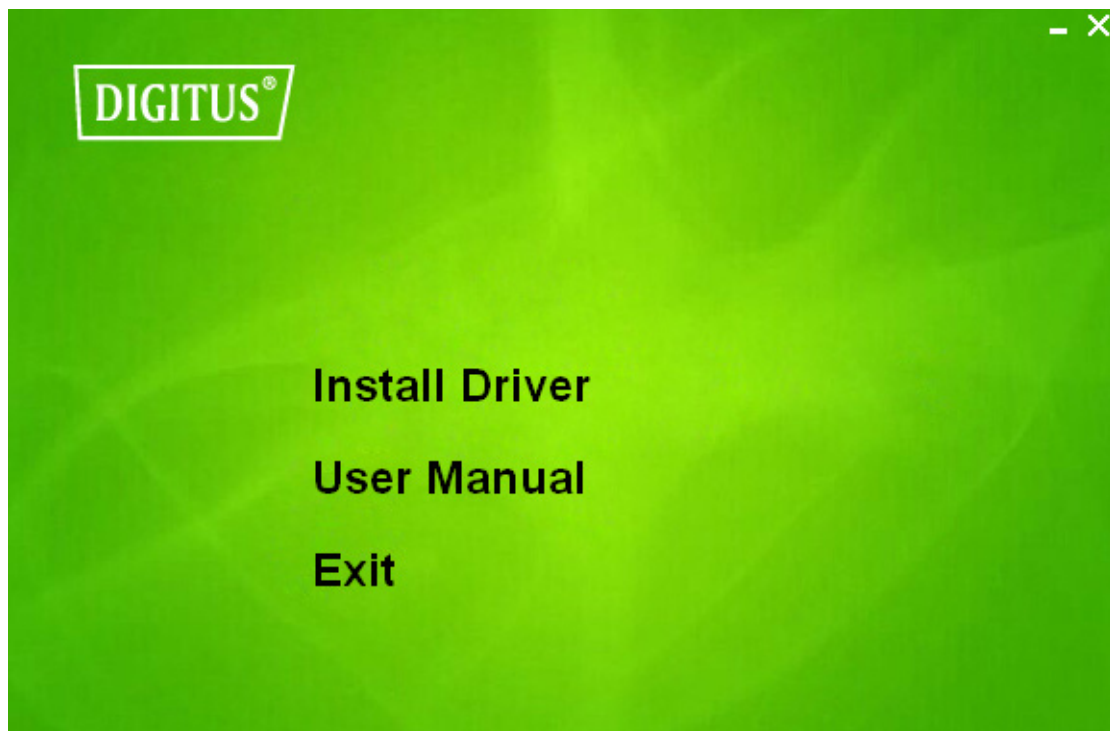
The following message will appear on your computer, click 'Cancel/Close'.

Under Windows Vista and Windows 7



1.3

Insert the driver CD into your CD-ROM. You can see autorun screen below. If not, you can double click 'autorun.exe' on CD.



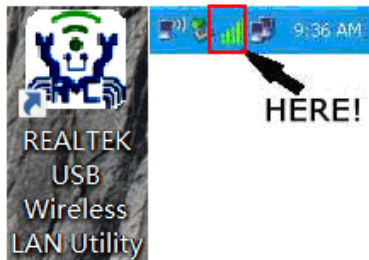
Click 'Install Driver' to start the installation procedure

When the installation descriptions pop-up, please click '**Finish**' to end the installation of driver.



1.5


A new icon will appear near the clock of system tray:




Left-click the icon will launch wireless network configuration utility, and you can right-click the icon to show the quick menu of configuration utility. This icon also uses different color to show the status of wireless connection:

 Wireless connection is established, good signal reception.

 Wireless connection is established, weak signal reception.

 Connection is not established yet.

 Wireless network adapter is not detected.

For detailed instructions of wireless network configuration utility, please see next chapter.

Connect to Wireless Access Point

To use wireless network, you have to connect to a wireless access point first. You can either use Client utility (comes with network adapter driver), or Windows Zero Config utility (comes with Windows operating system).

2.1 Using Client Utility

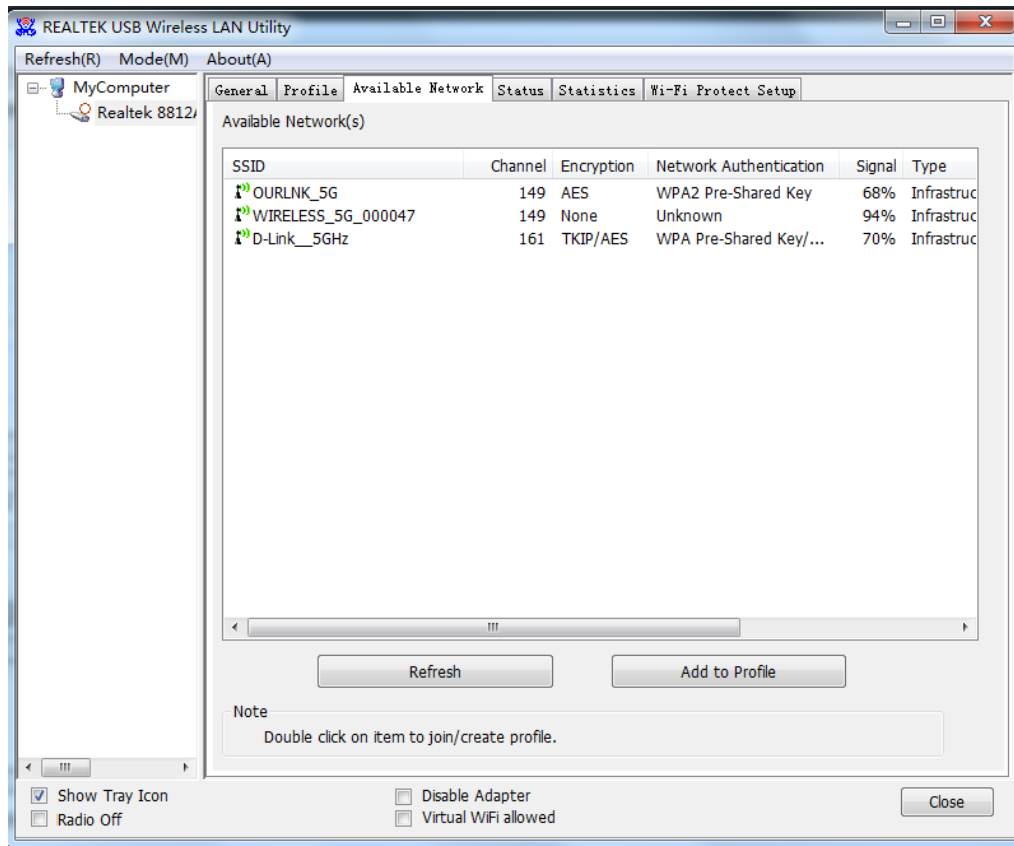
Please follow the following instructions to use Client configuration utility to connect to wireless access point.

1. Left-click the Client configuration utility icon located at lower-right corner of computer desktop, and configuration menu will appear:

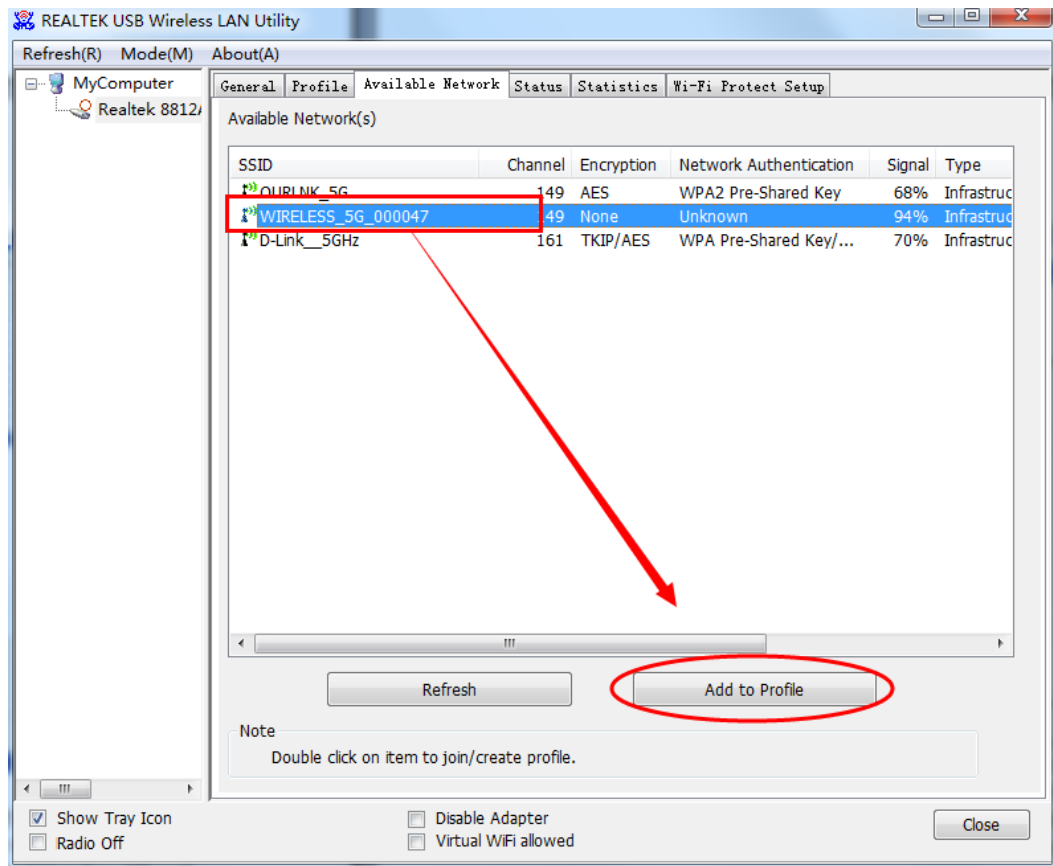


HERE!

2. Wireless utility will appear. Click '**Available Network**' menu to search for wireless access points nearby.



3. Please wait for a while, and all wireless access points which can be reached by this wireless network adapter will be displayed here.



If the wireless access point you wish to connect does not appear here, you can click '**Refresh**' button to scan for wireless access points again; if the wireless access point you're looking for still not appear, try to move the computer closer.

When the access point you're looking for is on the list, left-click it and then double click it or click '**Add to Profile**'.

4. If a password (Network Key) is required to access the wireless access point, please input it in '**Network key**' (and input it again in '**Confirm network key**' for confirmation). Click '**OK**' when password is properly inputted.

Wireless Network Properties:

This is a computer-to-computer (ad hoc) network; wireless access points are not used.

Profile Name: WIRELESS_5G_000047

Network Name (SSID): WIRELESS_5G_000047

Channel: 149 (5745MH; ▾)

Wireless network security

This network requires a key for the following:

Network Authentication: WPA-PSK ▾

Data encryption: AES ▾

ASCII PASSPHRASE

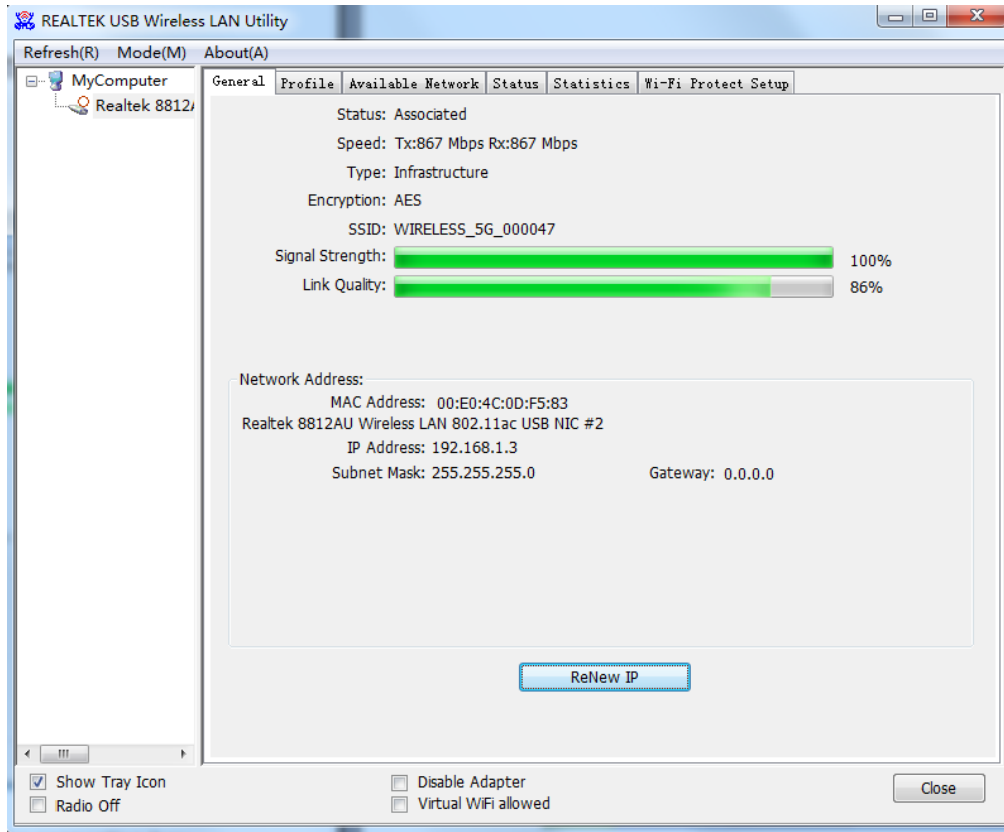
Key index (advanced): 1 ▾

Network key:

Confirm network key:

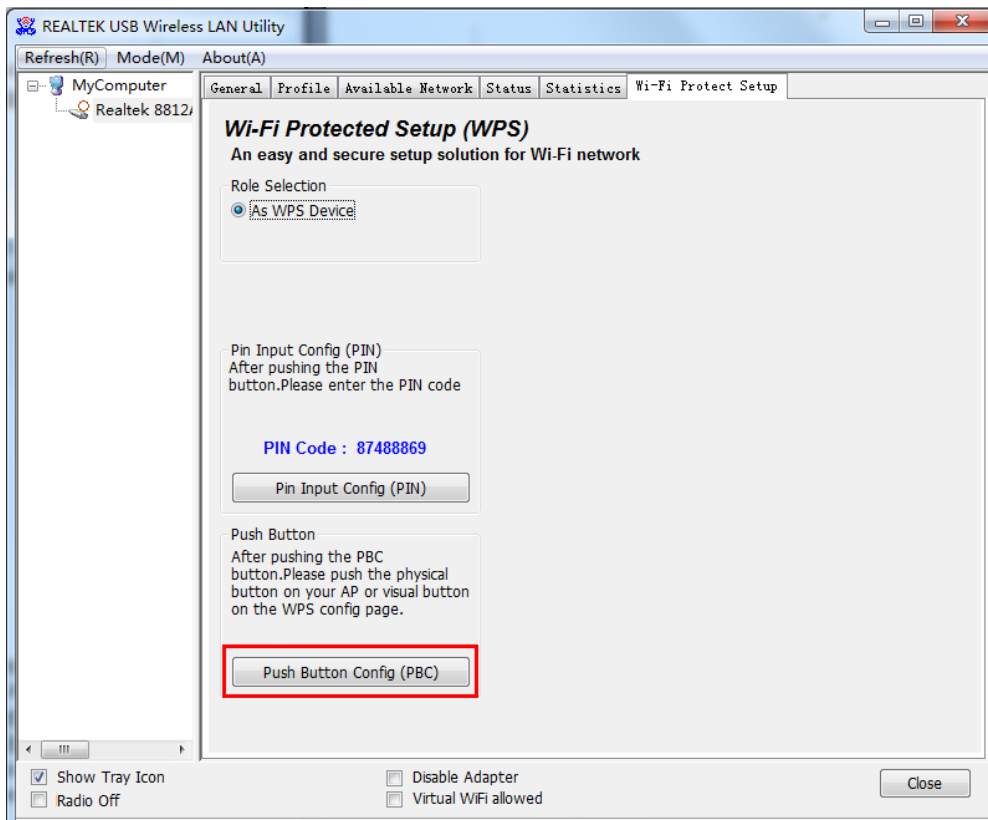
OK Cancel

5. Network adapter will attempt to connect to access point now, this may require few seconds to minutes, please be patient. When the **'Status'** become **'Associated'**, your computer is connected to access point you selected. Click **'Close'** to close configuration menu.

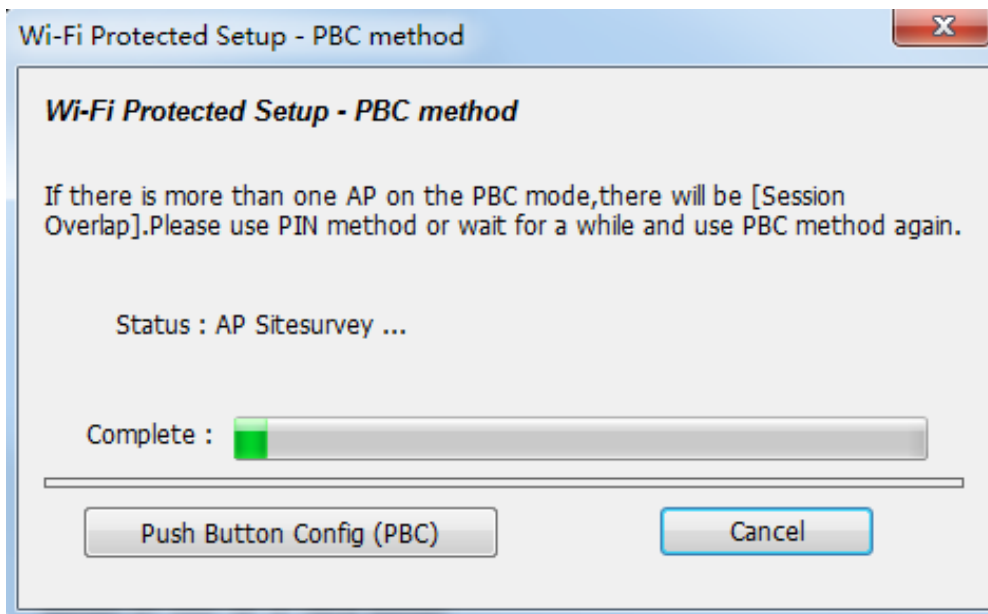


NOTE: If you connected to an access point but the connection has been dropped soon, please check security settings and re-check password spelling.

2.2 Using WPS Connect



Click "**Push Button Config (PBC)**" a message box will appear:



Please activate Push-Button function on wireless access point now, and wireless network adapter will establish secure connection with access point within one minute.

Hereby Assmann Electronic GmbH, declares that the Declaration of Conformity is part of the shipping content. If the Declaration of Conformity is missing, you can request it by post under the below mentioned manufacturer address.

Technical Description

- **Frequency Range:**
2412MHz-2472MHz for IEEE 802.11 b, g,n/HT20,
2422MHz-2462MHz for IEEE 802. 11 n/HT40.
802.11a/n-20MHz: 5180-5240MHz
802.11n-40MHz: 5190-5230MHz
802.11ac-20MHz: 5180-5240MHz
802.11ac-40MHz: 5190-5230MHz
802.11ac-80MHz: 5210
- **Transmit Power:** 12.585dBm(Maximum output)
- **Hardware Version:** V1.2
- **Software Version:** 1030.19

www.assmann.com

Assmann Electronic GmbH
Auf dem Schüffel 3
58513 Lüdenscheid
Germany

