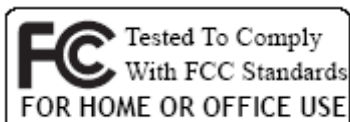




WIRELESS LAN USB 2.0 ADAPTER

USER'S GUIDE

(DN-70031)



© All rights reserved.

All trade names are registered trademarks of respective manufacturers listed.

This manual may not be copied in any media or form without the written consent of original maker.

TABLE OF CONTENTS

Information To User	i
1. Introduction	1
2. Wireless LAN Basics	3
3. IP ADDRESS	4
4. Install Driver/Utility	5
5. Wireless Network Configuration	8
5.1 Utility Icon	8
5.2 Client Mode (Default Setting).....	9
5.3 AP and Wizard Setup.....	12
5.4 AP Mode	14
6. Technical Specifications	15
7. Troubleshooting	16
8. Glossary	17

INFORMATION TO USER

Federal Communication Commission Interference Statement

This equipment has been tested and found to comply with the limits for a Class B digital device, pursuant to Part 15 of the FCC Rules. These limits are designed to provide reasonable protection against harmful interference in a residential installation.

This equipment generates, uses and can radiate radio frequency energy and, if not installed and used in accordance with the instructions, may cause harmful interference to radio communications. However, there is no guarantee that interference will not occur in a particular installation. If this equipment does cause harmful interference to radio or television reception, which can be determined by turning the equipment off and on, the user is encouraged to try to correct the interference by one of the following measures:

- * Reorient or relocate the receiving antenna.
- * Increase the separation between the equipment and receiver.
- * Connect the equipment into an outlet on a circuit different from that to which the receiver is connected.
- * Consult the dealer or an experienced radio/TV technician for help.

FCC Caution: Any changes or modifications not expressly approved by the party responsible for compliance could void the user's authority to operate this equipment.

IMPORTANT NOTE:

FCC Radiation Exposure Statement:

- * This equipment complies with FCC radiation exposure limits set forth for an uncontrolled environment.
- * This transmitter must not be co-located or operating in conjunction with any other antenna or transmitter.
- * We declare that this US model is limited in CH1-CH11 for 2.4G band by specific firmware controlled by the manufacturer and is not user changeable.

REGULATORY INFORMATION

WLAN 11b/g Adapter must be installed and used in strict accordance with the instructions. This device complies with the following radio frequency and safety standards.

USA - Federal Communications Commission (FCC)

This device complies with Part 15 of FCC Rules. Operation is subject to the following two conditions:

1. This device may not cause harmful interference.
2. This device must accept any interference that may cause undesired operation.

Europe- R&TTE Compliance Statement

This equipment complies with all the requirements of DIRECTIVE 1999/5/CE OF THE EUROPEAN PARLIAMENT AND THE COUNCIL of March 9, 1999 on radio equipment and telecommunication terminal Equipment and the mutual recognition of their conformity (R&TTE)

CE Declaration of Conformity

This product is herewith confirmed to comply with the requirements set out in the Council (European parliament) Directive on the Approximation of the Laws of the Member States relating to Electromagnetic Compatibility of Radio and Telecom device (1999/5/EC). For the evaluation regarding this Directive, the following standards were applied:

EN 300 328 V1.6.1 (2004-11)

EN 301 489-1 V1.4.1 (2002-08), EN 301 489-17 V1.2.1 (2002-08)

EN 60950-1: 2001

EU Countries Not intended for use

None.

Potential restrictive use

France: Only channels 10,11,12, and 13

The channel identifiers, channel center frequencies, and regulatory domains of each 22-MHz-wide channel are shown in following Table.

Channel Identifier	Center Frequency (MHZ)	Regulatory Domains					
		Japan	ETSI	North America	Israel	France	Mexico
1	2412	∨	∨	∨		∨	
2	2417	∨	∨	∨		∨	
3	2422	∨	∨	∨	∨	∨	
4	2427	∨	∨	∨	∨	∨	
5	2432	∨	∨	∨	∨	∨	
6	2437	∨	∨	∨	∨	∨	
7	2442	∨	∨	∨	∨		
8	2447	∨	∨	∨	∨		
9	2452	∨	∨	∨	∨		
10	2457	∨	∨	∨			∨
11	2462	∨	∨	∨			∨
12	2467	∨	∨				
13	2472	∨	∨				
14	2484	∨					



INTRODUCTION

Thank you for your purchase of the WLAN Mini USB Adapter. Featuring wireless technology, this wireless networking solution has been designed for both large and small businesses, and it is scalable so that you can easily add more users and new network features depending on your business scale.

FEATURES

- ☒ Support Microsoft Windows 2000, XP and Vista.
- ☒ Operating distance of up to 300 meters in free space.
- ☒ 54/48/36/24/18/12/11/9/6/5.5/2/1 Mbps selectable Data Rate.
- ☒ Support USB 2.0 interface.
- ☒ 64-bit or 128-bit WEP (Wired Equivalent Privacy); WPA (Wi-Fi Protected Access), WPA2
- ☒ 2.400GHz ~ 2.4835GHz unlicensed ISM Frequency Band.
- ☒ Modulation Method :
IEEE 802.11b : DSSS (Direct Sequence Spread Spectrum).
IEEE 802.11g : OFDM (Orthogonal Frequency Division Multiplexing).
- ☒ Easy operation and setting up.

SYSTEM REQUIREMENTS

- ☒ Windows System : 2000, XP and Vista.
- ☒ PCs must have a device driver installed. It allows you to communicate with WLAN Mini USB Adapter.

BEFORE YOU START

1. Confirm Box Contents



Wireless LAN Adapter



Quick Start Guide

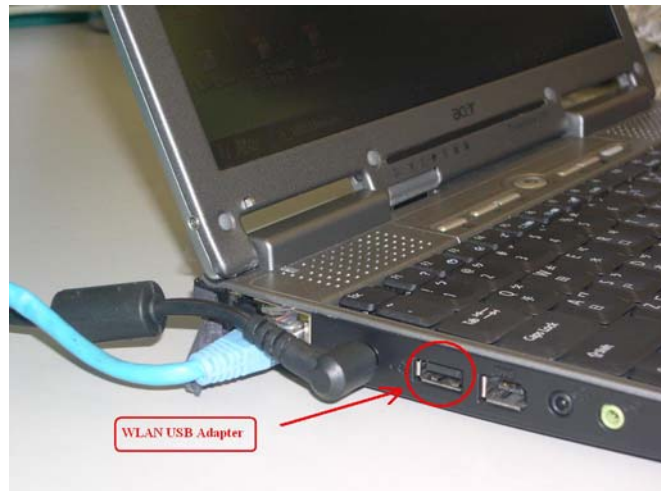


Driver CD

CONNECTING YOUR WLAN USB ADAPTER TO PC

Quick Start Guide

- 📄 Connect your WLAN USB dongle to your PC.
- 📄 Install driver.



GETTING TO KNOW WIRELESS LAN USB ADAPTER

LED

- 📄 LED turns on when POWER is applied to the WLAN Mini USB Adapter. LED is blinking when PC is sending data through WLAN Mini USB Adapter.

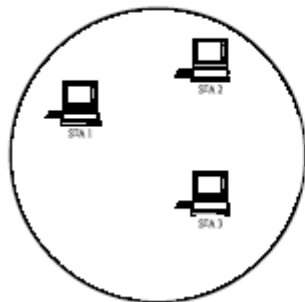
2

WIRELESS LAN BASICS

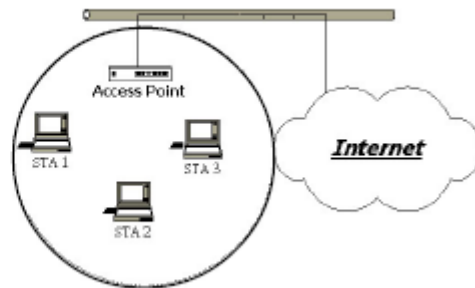
Wireless LAN network defined by IEEE 802.11b/g standard committee could be configured as :

- 📁 **Ad Hoc wireless LAN.**
- 📁 **Infrastructure wireless LAN.**

Ad Hoc network is a group of PCs installed with wireless LAN cards, this group of PCs is called a BSS (Basic Service Set). PCs in this group can use their wireless LAN cards to communicate with each other, but can not connect to the **Internet**.



Ad Hoc Wireless Network



Infrastructure Wireless Network

The most obvious difference between **Infrastructure** wireless network and **Ad Hoc** wireless network is that the PCs in **Infrastructure** wireless network can access the resource in the Internet through **Access Point**.

Depending on your requirement, you can easily set up your PC's network to be a "**Ad Hoc**" or "**Infrastructure**" wireless network. Generally speaking, if in your network, there is an **Access Point** in it, we recommend you to set your network as an "**Infrastructure**", so it can connect to the **Internet**.

3

IP ADDRESS

To use the WLAN Mini USB Adapter with a computing device, the WLAN Mini USB Adapter must be equipped with an USB 2.0 Interface. All drivers and supporting software for the WLAN Mini USB Adapter must be installed and configured first.

Ask your system administrator for the following information, which you may need to provide during driver installation :

- ☞ Your Wireless Client Name.
- ☞ Your Wireless SSID.
- ☞ Your computer's unique client name and workgroup name.
- ☞ For your network account, your user name and password.
- ☞ Your IP address, gateway address, and subnet mask if you're not using a DHCP client.

Any computer on a network is identified by a unique network address. There are two methods to assign a network address to a computer on a TCP/IP network :

- ☞ Static IP addressing.
- ☞ Dynamic IP addressing (DHCP Client).

In network with static IP addressing, the network administrator manually assigns an IP address to each computer. Once a static IP address is assigned, a computer uses the same IP address every time it reboots and logs on to the network. You may manually change the IP address in the **Network Properties dialog box**. Network using static IP address is easy to set up and do not require additional network management software.

In network with dynamic IP addressing, a DHCP server in the network dynamically assigns IP addresses to all clients every time they log on to the network. Network using dynamic IP address requires setting up and running a DHCP Server.

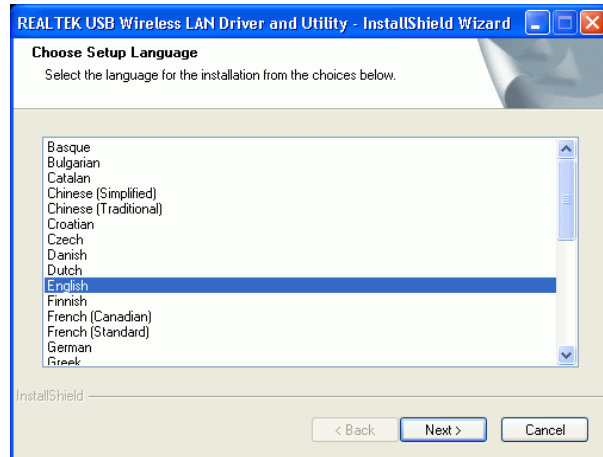
4

INSTALL DRIVER / UTILITY

The installation & driver CD will automatically activate the autorun installation program after you insert the disk into your CD drive.

Step 1 :

Insert the installation & driver CD into your CD-ROM. Installation program will prompt language setup. Pick up the Setup Language you would like to use and click **Next** button.



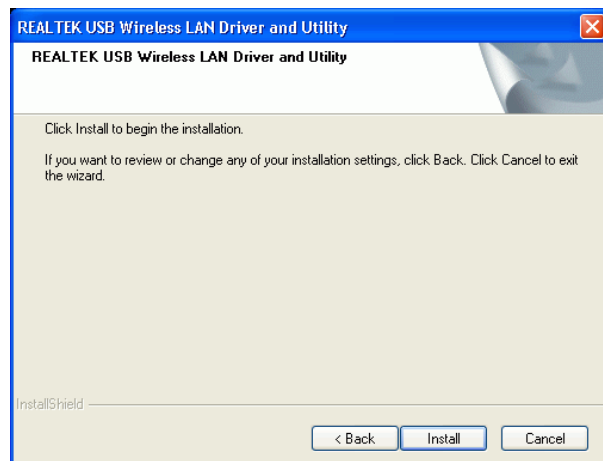
Step 2 :

Welcome Installation dialog prompt shown. Click **Next** to continue. Click **Cancel** to close installation.



Step 3 :

Select to local wireless region. Click **Back** to go previous. Click **Install** to continue. Click **Cancel** to close wizard.



Step 4 :

Click **Finish** to complete installation.



Driver Setup without WHQL (Optional)

Chipset vendor may provide the driver without WHQL. Please refer the following steps to setup.

Step 1 :

Plug the USB adapter into the USB port of your PC. Choose “**No, not this time**”.

Click **Next** to continue.

Click **Cancel** to exit driver installation.



Step 2 :

Windows will detect USB device plug in. Choose “Install the software automatically [Recommended]”

Click **Back** to go previous

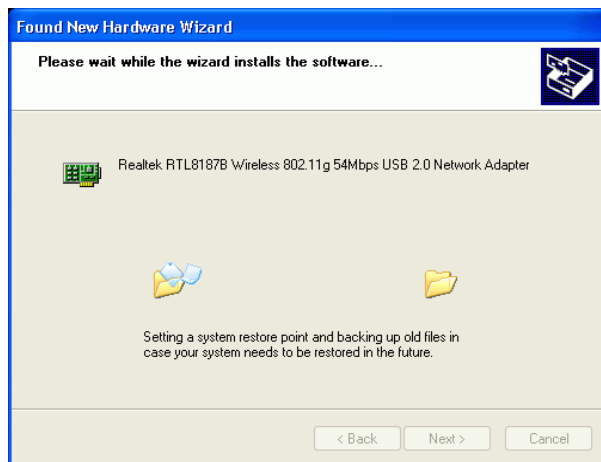
Click **Next** button continue.

Click **Cancel** to close installation



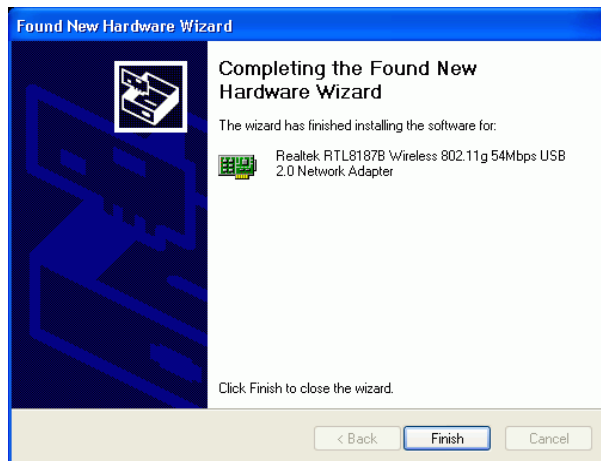
Step 3 :

Windows will detect USB device and copy driver to windows system.



Step 4 :

Windows will install USB driver to system folder and click **Finish** to complete installation..



5

WIRELESS NETWORK CONFIGURATION

WLAN USB Adapter uses its own management software. All functions controlled by users are provided by this application. When you insert the WLAN USB Adapter into the USB port of your PC, a new icon should appear in the Windows System Tray automatically

5.1 Utility Icon

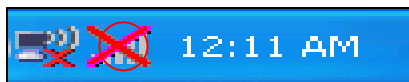
- Client mode utility running but no WLAN USB Adapter plugged



- Client mode utility running and WLAN USB Adapter scan available network.



- Client mode utility running and WLAN USB Adapter can not scan any AP



- AP mode utility running.



5.2 Client Mode (Default Setting)

5.2.1 Wireless USB Device Control

<input checked="" type="checkbox"/> Show Tray Icon	<input type="checkbox"/> Disable Adapter
<input type="checkbox"/> Radio Off	<input type="checkbox"/> Windows Zero Config

- Show Tray Icon – Show icon or not show icon in systray.
- Radio Off – Stop wireless signal.
- Disable Adapter – Stop wireless USB device.
- Windows Zero Config – Switch utility to winxp default wireless setting tool.

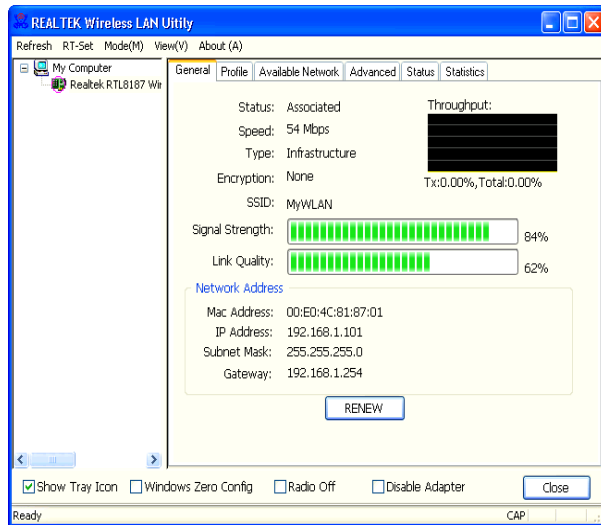
5.2.1 GENERAL SETTING

Once USB device is plugged, double click on that icon and the configuration window will pop up as shown. It shows the current connected network. The signal strength and link quality are displayed also.

The bar graph displays the quality and strength of the link between the node and its Access Point. Link Quality is a measurement of receiving and transmitting performances over the radio.

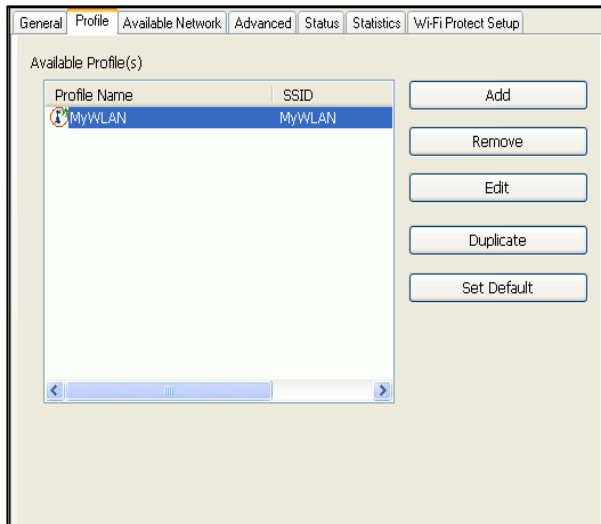
Network Address displays current MAC Address, IP Address, Subnet. and Gateway.

Click **Renew IP** button to refresh IP address leased from wireless AP.



5.2.2 PROFILE SETTING

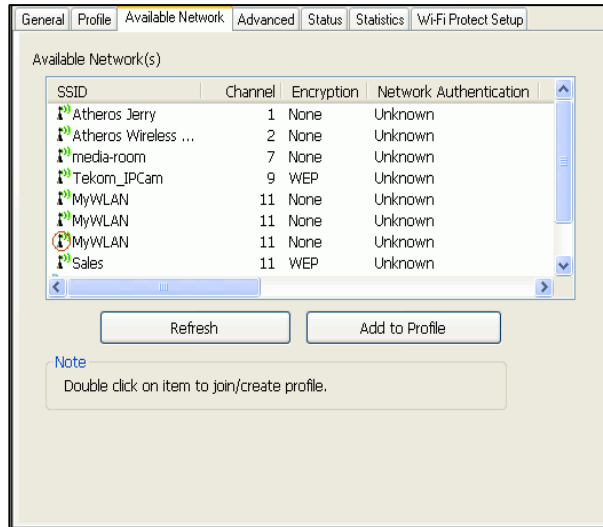
In profile tab, you can **Add, Remove, Edit, Duplicate** and **Set Default** to manipulate profile content manually. Strongly recommend to use profile after you do **Available Network**.



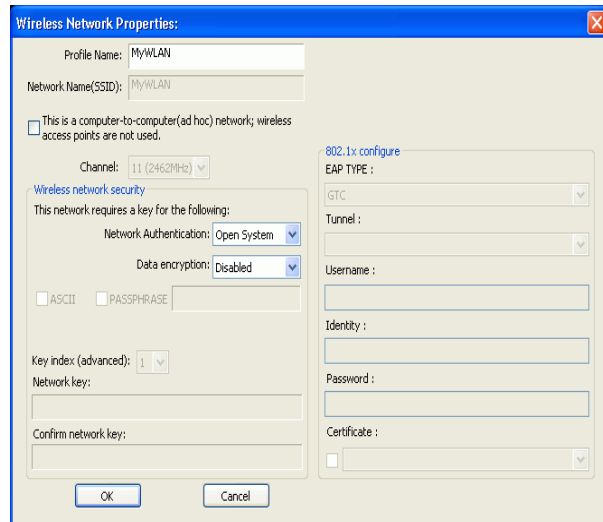
5.2.3 AVAILABLE NETWORK SETTING

Click **Available Network** tab and it will show all available networks that radio can reach. Select proper SSID & BSSID you want to connect.

Click **Refresh** button to force and rescan available networks currently.

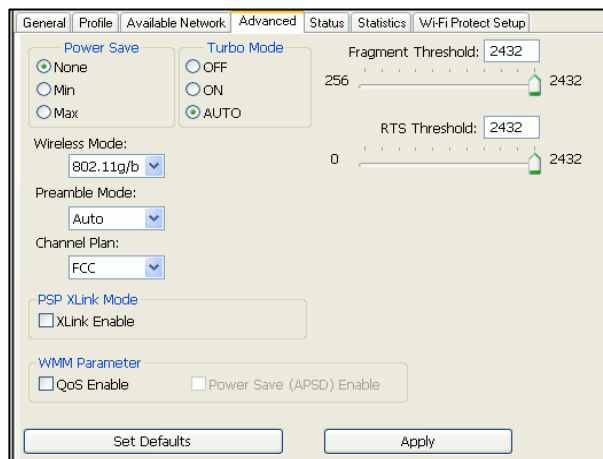


Select one of SSIDs, and click **Add to Profile** to create profile that can be configured more wireless parameters. In this page, you can edit your profile name, configure wireless security like WEP, WPA, WPA2, 802.1x ...etc. After finishing setup, click **OK** button to save configuration.



5.2.4 ADVANCED SETTING

In Advanced tab, you may configure **Power Save mode, Turbo Mode, Wireless Mode, Preamble Mode, Channel Plan, PSP XLink Mode, WMM Parameter, Fragment Threshold** and **RTS**

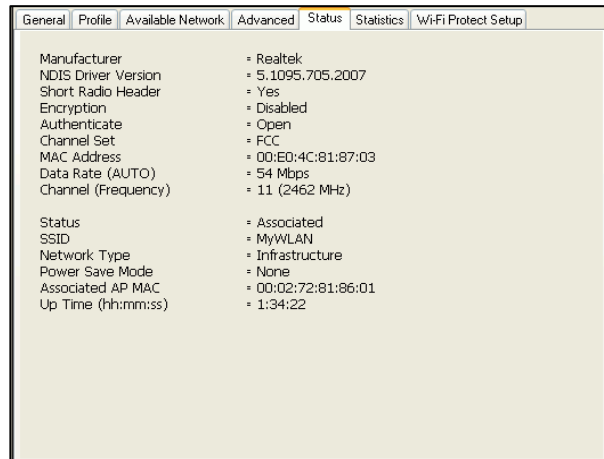


Threshold. Once you change the value, click **Apply** button to save them. Also click **Set Default** button to apply them to default value.

PS. Strongly recommend be careful to change Fragment, RTS Threshold if you're not have wireless knowledge background.

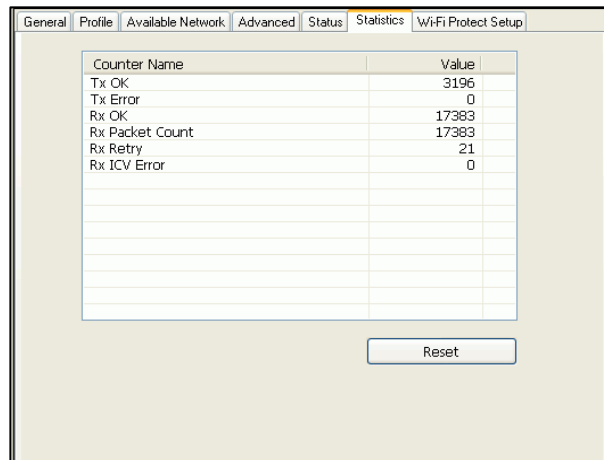
5.2.5 Status

Status page tab, shows all wireless, networking and device driver version in details.



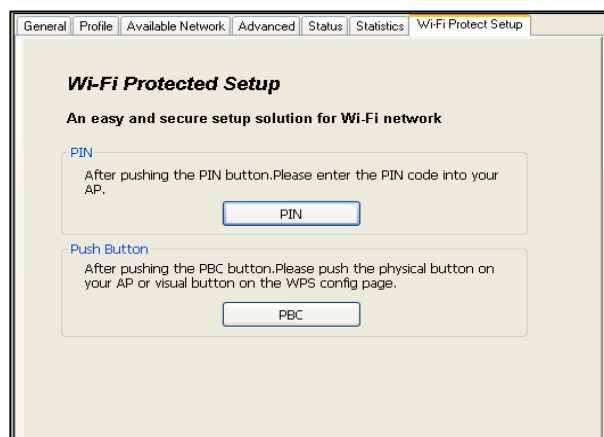
5.2.6 Statistics

Statistics page tab will show real-time TX/RX relative counters to check or evaluate the wireless performance. Click **Reset** button to set counter to zero.



5.2.7 Wi-Fi Protect Setup

Wi-Fi Protect Setup provides **PIN** and **Push Button** to perform simple setup but complex wireless lan security protection.



5.3 AP and Wizard Setup

5.3.1 Wizard-1

Click **Set Wizard** menu to enter operation wizard.

Click **AP: Setup Access Point wireless network** to configure Access Point parameters.

Next to continue.

Cancel to leave wizard page.



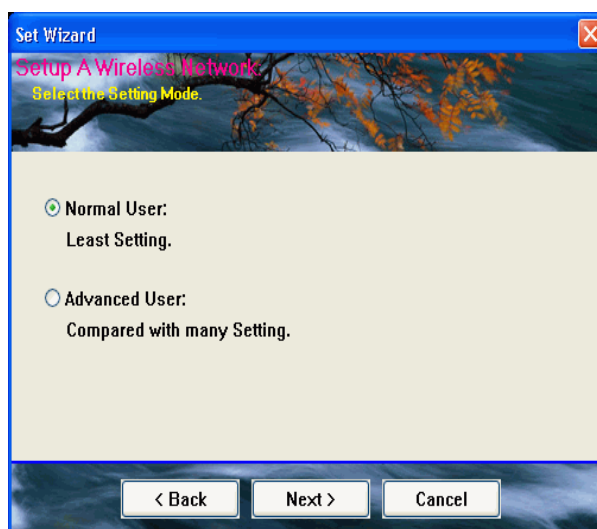
5.3.2 Wizard-2

Pick up **Normal User** (minimum settings) or **Advanced User** (minimum and wireless security settings). Lets pick up **Advanced User** for example.

Back to go previous.

Next to continue.

Cancel to close wizard.



5.3.3 Wizard-3

User defines wireless network Name [SSID] (less than 32 characters). User may skip wireless security. Strongly recommend user to setup wireless security to avoid invalid



users. Take **WPA2-PSK/TKIP** for example.

Back to go previous. **Next** to continue. **Cancel** to close wizard.

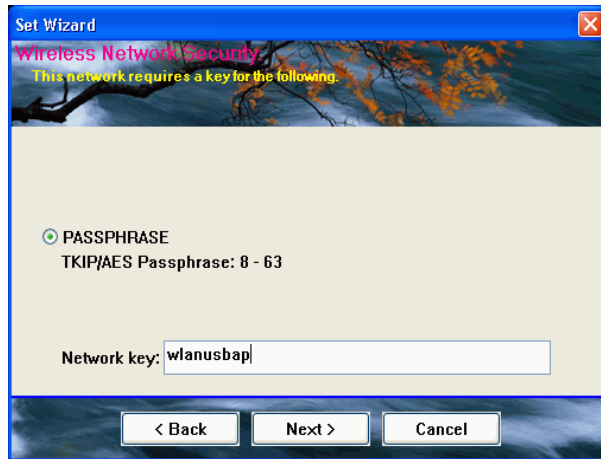
5.3.4 Wizard-4

This page sets
PASSPHRASE
network key Security
settings

Back to go previous

Next to continue.

Cancel to close wizard.



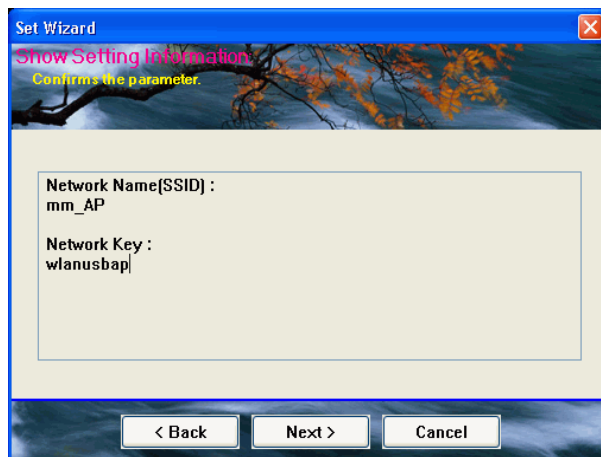
5.3.5 Wizard-5

This page shows the
settings.

Back to go previous.

Next to continue.

Cancel to close wizard.



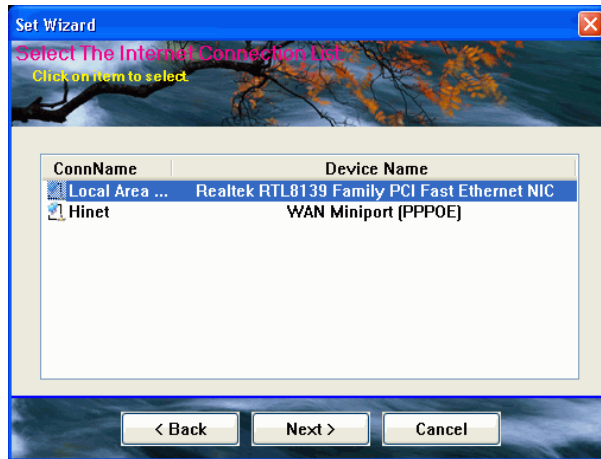
5.3.5 Wizard-6

Select device that connects with internet.

Back to go previous.

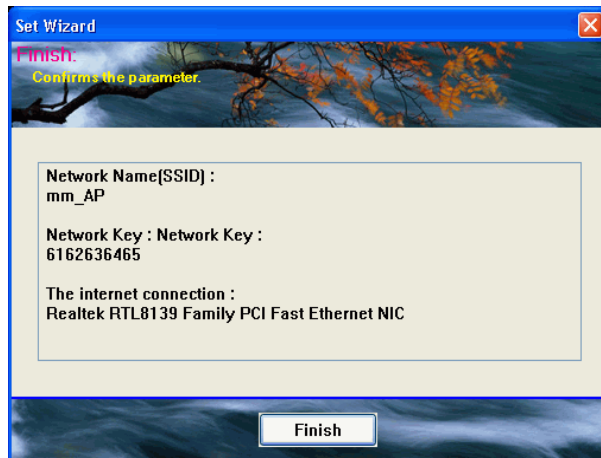
Next to continue.

Cancel to close wizard.



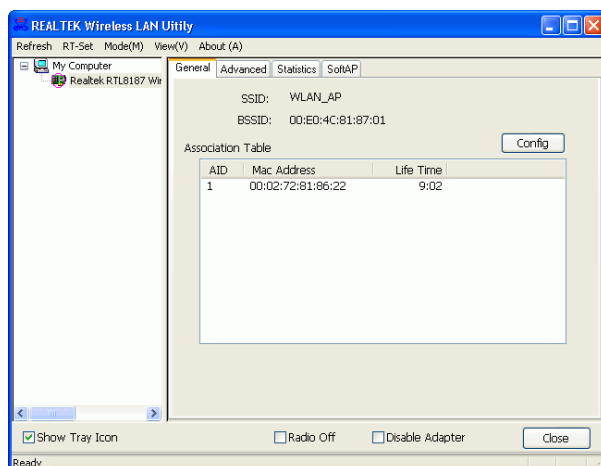
5.3.5 Wizard-7

Show all settings under AP mode. Click **Finish** to complete wizard setup.



5.4 AP Mode

There are General, Advanced, Statistics and SoftAP pages to do configure SSID, channel, advanced wireless parameters, statistics counters and internet device setup respectively.



6

TECHNICAL SPECIFICATIONS

Product Name	Wireless LAN 11g USB Adapter
Chipset	RTL8187B
Standard	IEEE 802.11b, IEEE 802.11g
Frequency Band	2.4GHz ~ 2.484GHz unlicensed ISM band
Spread Spectrum	IEEE 802.11b : DSSS IEEE 802.11g : OFDM
Modulation	IEEE 802.11b : DBPSK / DQPSK / CCK IEEE 802.11g : BPSK, QPSK, 16QAM, 64QAM
Data Rate	IEEE 802.11b : 1, 2, 5.5, 11Mbps IEEE 802.11g : 6, 9, 12, 18, 24, 36, 48, 54Mbps
Operation Mode	Ad hoc, Infrastructure (Access Points is needed)
Transmitter Power	17 dBm @11b, 14 dbm @11g
Receive Sensitivity	Operating at 11 Mbps: < -85 dBm @8% FER, 54 Mbps: < -68 dBm @8% FER
Operating Range	100 - 300m, depending on surrounding environment
Power Consumption	Transmit : around 428 mA. Receive : around 387 mA.
Security	64-bit or 128-bit WEP (Wired Equivalent Privacy) / WPA/WPA2-PSK, WPA/WPA2-802.1x TKIP/AES
I/O Interface	USB 2.0
LED	Green LED indicator
Operating System	Windows 2000, XP, Vista, Mac, Linux Kernel 2.6
Regulation	FCC part 15B/C for North America, CE for Europe.
Operating Temperature	0 ~ 55 celsius
Storage Temperature	-20 ~ 70 celsius
Humidity	5 ~ 90% (non-condensing)
Size	76.5 (L) x 27 (W) x 10 (H) mm
Weight	14 g



7 TROUBLESHOOTING

Symptom :

The LED is off.

Remedy :

Make sure the PC Card is inserted properly. Otherwise contact your vendor.

Symptom :

The LED is always on not blinking.

Remedy :

Make sure that you have installed the driver from attached CD. Otherwise contact your vendor.

Symptom :

The LED is blinking but the PC Card icon does not appear in your icon tray.

Remedy :

Make sure that you have installed the Utility from the attached CD.

Symptom :

The PC Card is linking, but can't share files with others.

Remedy :

Make sure the **file and printer sharing** function is enabled. You can enable the function by checking the icon of **My Computer -> Control Panel -> Network -> file and printer sharing -> I want to be able to give others to access to my files.**

Symptom :

Detect dongle slow while plugged in.

Remedy :

Try to upgrade USB1.1 to USB2.0.

Symptom :

Slow or poor performance under AP mode

Remedy :

Try to select another channel for the communicating group or move your device closer to the Access Point.



IEEE 802.11 Standard

The IEEE 802.11 Wireless LAN standards subcommittee, which is formulating a standard for the industry.

Access Point

An internetworking device that seamlessly connects wired and wireless networks together.

Ad Hoc

An Ad Hoc wireless LAN is a group of computers, each with a WLAN adapter, connected as an independent wireless LAN. Ad Hoc wireless LAN is applicable at a departmental scale for a branch or SOHO operation.

BSSID

A specific Ad Hoc LAN is called a Basic Service Set (BSS). Computers in a BSS must be configured with the same BSSID.

DHCP

Dynamic Host Configuration Protocol - a method in which IP addresses are assigned by server dynamically to clients on the network. DHCP is used for Dynamic IP Addressing and requires a dedicated DHCP server on the network.

Direct Sequence Spread Spectrum

This is the method the wireless cards use to transmit data over the frequency spectrum. The other method is frequency hopping. Direct sequence spreads the data over one frequency range (channel) while frequency hopping jumps from one narrow frequency band to another many times per second.

ESSID

An Infrastructure configuration could also support roaming capability for mobile workers. More than one BSS can be configured as an Extended Service Set (ESS). Users within an ESS could roam freely between BSSs while served as a continuous connection to the network wireless stations and Access Points within an ESS must be configured with the same ESSID and the same radio channel.

Ethernet

Ethernet is a 10/100Mbps network that runs over dedicated home/office wiring. Users must be wired to the network at all times to gain access.

Gateway

A gateway is a hardware and software device that connects two dissimilar systems, such as a LAN and a mainframe. In Internet terminology, a gateway is another name for a router. Generally a gateway is used as a funnel for all traffic to the Internet.

IEEE

Institute of Electrical and Electronics Engineers
Infrastructure

An integrated wireless and wired LAN is called an Infrastructure configuration. Infrastructure is applicable to enterprise scale for wireless access to central database, or wireless application for mobile workers.

ISM Band

The FCC and their counterparts outside of the U.S. have set aside bandwidth for unlicensed use in the so-called ISM (Industrial, Scientific and Medical) band. Spectrum in the vicinity of 2.4 GHz, in particular, is being made available worldwide. This presents a truly revolutionary opportunity to place convenient high-speed wireless capabilities in the hands of users around the globe.

Local Area Network (LAN)

A LAN is a group of computers, each equipped with the appropriate network adapter card connected by cable/air, that share applications, data, and peripherals. All connections are made via cable or wireless media, but a LAN does not use telephone services. It typically spans a single building or campus.

Network

A network is a system of computers that is connected. Data, files, and messages can be transmitted over this network. Networks may be local or wide area networks.

Protocol

A protocol is a standardized set of rules that specify how a conversation is to take place, including the format, timing, sequencing and/ or error checking.

SSID

A Network ID unique to a network. Only clients and Access Points that share the same SSID are able to communicate with each other. This string is case-sensitive.

Static IP Addressing

A method of assigning IP addresses to clients on the network. In networks

with Static IP address, the network administrator manually assigns an IP address to each computer. Once a Static IP address is assigned, a computer uses the same IP address every time it reboots and logs on to the network, unless it is manually changed.

Temporal Key Integrity Protocol (TKIP)

The Temporal Key Integrity Protocol, pronounced tee-kip, is part of the IEEE 802.11i encryption standard for wireless LANs. TKIP is the next generation of WEP, the Wired Equivalency Protocol, which is used to secure 802.11 wireless LANs. TKIP provides per-packet key mixing, a message integrity check and a re-keying mechanism, thus fixing the flaws of WEP.

Transmission Control Protocol / Internet Protocol (TCP/IP)

TCP/IP is the protocol suite developed by the Advanced Research Projects Agency (ARPA). It is widely used in corporate Internet works, because of its superior design for WANs. TCP governs how packet is sequenced for transmission the network. The term "TCP/IP" is often used generically to refer to the entire suite of related protocols.

Transmit / Receive

The wireless throughput in Bytes per second averaged over two seconds.

Wi-Fi Alliance

The Wi-Fi Alliance is a nonprofit international association formed in 1999 to certify interoperability of wireless Local Area Network products based on IEEE 802.11 specification. The goal of the Wi-Fi Alliance's members is to enhance the user experience through product interoperability. The organization is formerly known as WECA.

Wi-Fi Protected Access (WPA)

The Wi-Fi Alliance put together WPA as a data encryption method for 802.11 wireless LANs. WPA is an industry-supported, pre-standard version of 802.11i utilizing the Temporal Key Integrity Protocol (TKIP), which fixes the problems of WEP, including using dynamic keys.

Wide Area Network (WAN)

A WAN consists of multiple LANs that are tied together via telephone services and / or fiber optic cabling. WANs may span a city, a state, a country, or even the world.

Wired Equivalent Privacy (WEP)

Now widely recognized as flawed, WEP was a data encryption method used to protect the transmission between 802.11 wireless clients and APs. However, it used the same key among all communicating devices.

WEP's problems are well-known, including an insufficient key length and no automated method for distributing the keys. WEP can be easily cracked in a couple of hours with off-the-shelf tools.

Wireless LAN (WLAN)

A wireless LAN does not use cable to transmit signals, but rather uses radio or infrared to transmit packets through the air. Radio Frequency (RF) and infrared are the commonly used types of wireless transmission. Most wireless LANs use spread spectrum technology. It offers limited bandwidth, usually under 11Mbps, and users share the bandwidth with other devices in the spectrum; however, users can operate a spread spectrum device without licensing from the Federal Communications Commission (FCC).

Fragment Threshold

The proposed protocol uses the frame fragmentation mechanism defined in IEEE 802.11 to achieve parallel transmissions. A large data frame is fragmented into several fragments each of size equal to fragment threshold. By tuning the fragment threshold value, we can get varying fragment sizes. The determination of an efficient fragment threshold is an important issue in this scheme. If the fragment threshold is small, the overlap part of the master and parallel transmissions is large. This means the spatial reuse ratio of parallel transmissions is high. In contrast, with a large fragment threshold, the overlap is small and the spatial reuse ratio is low. However high fragment threshold leads to low fragment overhead. Hence there is a trade-off between spatial re-use and fragment overhead.

Fragment threshold is the maximum packet size used for fragmentation. Packets larger than the size programmed in this field will be fragmented. If you find that your corrupted packets or asymmetric packet reception (all send packets, for example). You may want to try lowering your fragmentation threshold. This will cause packets to be broken into smaller fragments. These small fragments, if corrupted, can be resent faster than a larger fragment. Fragmentation increases overhead, so you'll want to keep this value as close to the maximum value as possible.

RTS (Request To Send) Threshold

The RTS threshold is the packet size at which packet transmission is governed by the RTS/CTS transaction. The IEEE 802.11-1997 standard allows for short packets to be transmitted without RTS/CTS transactions. Each station can

have a different RTS threshold. RTS/CTS is used when the data packet size exceeds the defined RTS threshold. With the CSMA/CA transmission mechanism, the transmitting station sends out an RTS packet to the receiving station, and waits for the receiving station to send back a CTS (Clear to Send) packet before sending the actual packet data. This setting is useful for networks with many clients. With many clients, and a high network load, there will be many more collisions. By lowering the RTS threshold, there may be fewer collisions, and performance should improve. Basically, with a faster RTS threshold, the system can recover from problems faster. RTS packets consume valuable bandwidth, however, so setting this value too low will limit performance.

Beacon Interval

In addition to data frames that carry information from higher layers, 802.11 includes management and control frames that support data transfer. The beacon frame, which is a type of management frame, provides the "heartbeat" of a wireless LAN, enabling stations to establish and maintain communications in an orderly fashion. Beacon Interval represents the amount of time between beacon transmissions. Before a station enters power save mode, the station needs the beacon interval to know when to wake up to receive the beacon (and learn whether there are buffered frames at the access point).

Preamble Type

There are two preamble types defined in IEEE 802.11 specification. A long preamble basically gives the decoder more time to process the preamble. All 802.11 devices support a long preamble. The short preamble is designed to improve efficiency (for example, for VoIP systems). The difference between the two is in the Synchronization field. The long preamble is 128 bits, and the short is 56 bits.

WPA2

It is the second generation of WPA. WPA2 is based on the final IEEE 802.11i amendment to the 802.11 standard.

Temporal Key Integrity Protocol (TKIP)

The Temporal Key Integrity Protocol, pronounced tee-kip, is part of the IEEE 802.11i encryption standard for wireless LANs. TKIP is the next generation of WEP, the Wired Equivalency Protocol, which is used to secure 802.11 wireless

LANs. TKIP provides per-packet key mixing, a message integrity check and a re-keying mechanism, thus fixing the flaws of WEP.

802.1x Authentication

802.1x is a framework for authenticated MAC-level access control, defines Extensible Authentication Protocol (EAP) over LANs (WAPOL). The standard encapsulates and leverages much of EAP, which was defined for dial-up authentication with Point-to-Point Protocol in RFC 2284.

Beyond encapsulating EAP packets, the 802.1x standard also defines EAPOL messages that convey the shared key information critical for wireless security.

Advanced Encryption Standard (AES)

Security issues are a major concern for wireless LANs, AES is the U.S. government's next-generation cryptography algorithm, which will replace DES and 3DES.