



# BLUETOOTH 2.0 MINI USB ADAPTER

## Quick Start Guide

© All rights reserved.

All trade names are registered trademarks of respective manufacturers listed.

The Bluetooth name and the Bluetooth trademarks are owned by Bluetooth SIG, Inc.

This manual may not be copied in any media or form without the written consent of original maker.

## TABEL OF CONTENTS

WELCOME .....	1
Features .....	2
System Requirements .....	2
Before You Start .....	2
1. INSTALL WIDCOMM DRIVER in Win 2000/XP x86/Vista x86.....	3
2. SELECT BLUETOOTH SERVICES .....	6

## WELCOME

Thank you for your purchase of the Bluetooth USB Adapter. Featuring Bluetooth wireless technology, Bluetooth USB Adapter creates cable-free connections between your PCs and other Bluetooth devices. Bluetooth USB Adapter is following Bluetooth V2.0 specification and is compatible with all Bluetooth certified devices.

### Features

- Compliant with Bluetooth standard version 2.0.
- Support for Microsoft Windows 2000 / XP x86 and Vista x86.
- Easy operation and setting up.

### System requirements

- Processor : Intel Celeron / Pentium III, IV; AMD Duron / Athlon
- Operating System : Microsoft Windows 2000 / XP x86 and Vista x86.
- System memory : 32MB at least
- Hard Drive Free Space : 11.5MB

### Before you start

- 1). Remove any Microsoft native driver.
- 2). Please remove any previous version of Widcomm Bluetooth software existing in your system.

The remove procedures are as follows:

Step 1 : Click Start/Settings, then select Control Panel.

Step 2 : In the Control Panel window, double click Add/Remove programs icon.

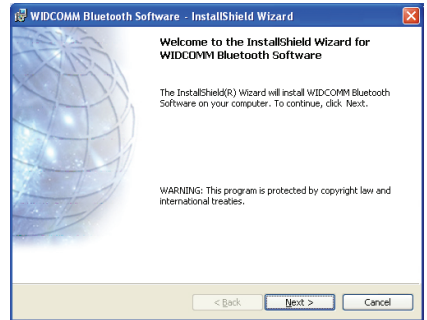
Step 3 : Find out the item Widcomm Bluetooth Software x.x.x.x then remove it.

### Install Widcomm in Win 2000 / XP x86 / Vista x86

The following steps tell you how to install the Widcomm driver in Win 2000 / XP x86/ Vista x86 .  
Note: If you bought the extra software, CAMagic, it will be automatically installed while you install software.

### Step 1:

Put Widcomm Driver CD into CD drive of your PC, an Auto-install program will start to guide you to complete the installation step by step. You also can find **Setup.exe** from the given Widcomm Driver CD, double click on it, the InstallShield wizard dialog box will open, click **Next**.



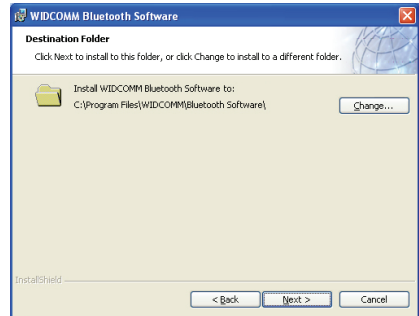
### Step 2:

Accept the software license agreement.  
Click **Next**.



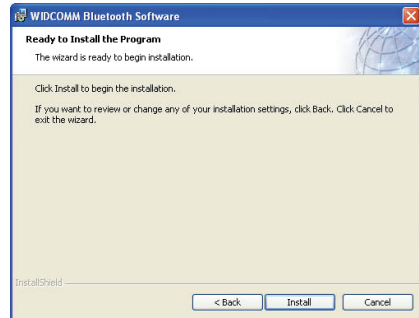
### Step 3:

Select destination folder, you can choose the default or change to your favorite.



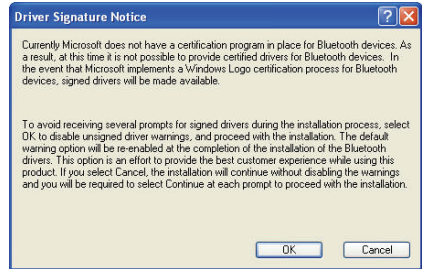
### Step 4:

Click **Install** to start the installation and files copying in processing ...



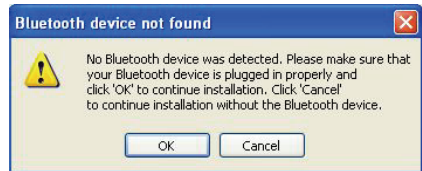
## Step 5:

Click OK to ignore un-signed driver warning.




**Step 6:** If Bluetooth dongle is plugged in your PC now, his screen will not be displayed, otherwise it will show up and one reminding window will show up to ask you to **plug in** the USB adapter.

Plug in your USB adapter if it has not been plugged in before. Click **OK** to continue.



**Step 7:** Installation is complete.


My Bluetooth places  should appear on your desktop and a similar icon also appears on the lower right corner of your screen.



## Select Bluetooth Services

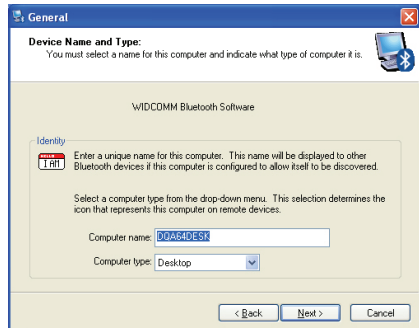
When the first time Widcomm driver is installed, and USB Bluetooth Dongle is plugged to your system, you can configure your Bluetooth services for your system.

### Step 1:

Double-click on the Bluetooth icon  on the lower-right corner of the screen, you will see configuration wizard, Click **Next** button.

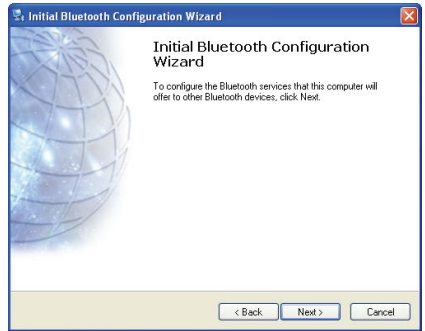
### Step 2:

Assign computer name and specify computer type, then click **Next** button. These can be defined by customer.

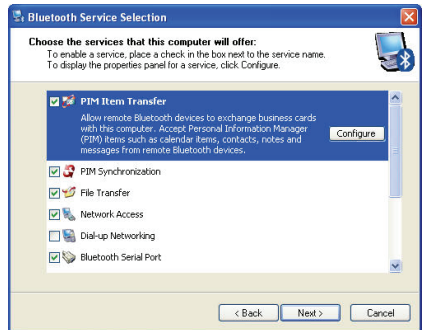


### Step 3:

Click **Next** button to configure Bluetooth services.



**Step 4:** The default setting is that all services are available, you can check or uncheck one or more services, then click **Next** button..



**Step 5:** Click **Skip**.



**Step 6:** Configuration is completed. Click **Finish**.

