



UPS BATTERY MODULE



Quick Installation Guide

DN-170120/ DN-170121/





DN-170122/ DN-170123

Table of Contents

- 1. Introduction 3
- 2. Package Content 3
- 3. Safety Warnings 3
- 4. Rear Panel Description 4
- 5. Installation 4

Special Symbols

The following are examples of symbols used on the UPS or accessories to alert you to important information:

	<p>RISK OF ELECTRIC SHOCK – Observe the warning associated with the risk of electric shock symbol.</p>
	<p>CAUTION: REFER TO OPERATOR'S MANUAL – Refer to your operator's manual for additional information, such as important operating and maintenance instructions</p>
	<p>This symbol indicates that you should not discard the UPS or the UPS batteries in the trash. This product contains sealed, lead-acid batteries and must be disposed of properly. For more information, contact your local recycling/ reuse or hazardous waste center.</p>
	<p>This symbol indicates that you should not discard waste electrical or electronic equipment (WEEE) in the trash. For proper disposal, contact your local recycling/ reuse or hazardous waste center.</p>

1. Introduction

The extended battery pack can be added to UPS to extend the available battery time. Up to four EBPS can be installed with the ups.

2. Package Content

Check the accessories according to the packing list and contact the dealer in case of missing parts.

- 1x Battery Pack
- 1x User Manual
- 1x AC input cord
- 1x Plastic base
- 1x EBP Cable

3. Safety Warnings

IMPORTANT SAFETY INSTRUCTIONS – SAVE THESE INSTRUCTIONS

This manual contains important instruct icons that you should follow during installation and maintenance of the EBP. Please read all instruct icons before operating the equipment and save this manual for future reference.

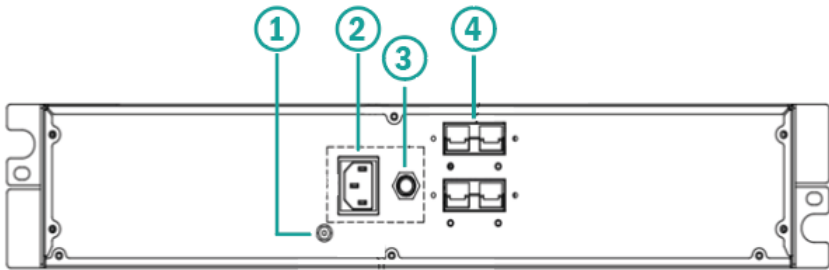


CAUTION

- Batteries can present a risk of electrical shock or burn from high short-circuit current. Observe proper precautions. Servicing should be performed by qualified service personnel knowledgeable of batteries and required precautions. Keep unauthorized personnel away from batteries.

- Proper disposal of batteries is required. Refer to your local codes for disposal requirements.
- Never dispose of batteries in a fire. Batteries may explode when exposed to flame.

4. Rear Panel Description



1	GND screw hole	2	AC input socket
3	Breaker	4	SBS50 terminal

5. Installation

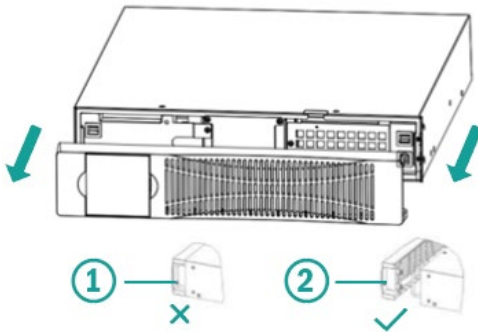
Inspecting the Equipment

If any equipment has been damaged during shipment, keep the shipping cartons and packing materials for the carrier or place of purchase and file a claim for shipping damage. If you discover damage after acceptance, file a claim for concealed damage.

To install the optional EBP(s) for a UPS:

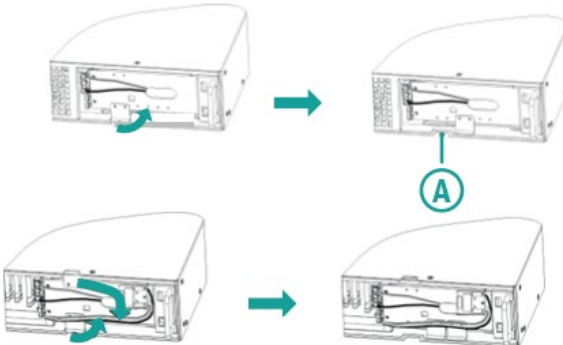
1. Remove the front cover of each EBP. Press the panel side, hold the other side, and quickly extract it, then extract the other side with display.

- Remove the front cover of UPS.
Press the panel side with LCD display, hold the other side and quickly extract it, and then extract the other side with display. A ribbon cable connects the LCD control panel to the UPS. Do not pull on the cable or disconnect it. When remove the panel, operate as the following below Figure shows instead of the left one.



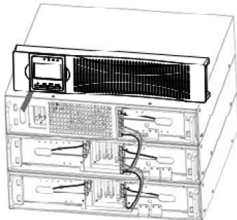
1	It is wrong that extracting the front cover from the handle.
2	It is correct that extracting the front cover from the panel.

- On the bottom of the UPS front cover, remove(A) the EBP cable knockout.

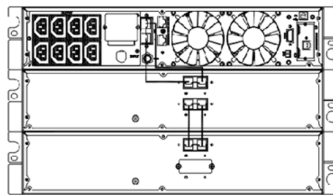


4. Plug the EBP cable(s) into the battery connector(s)
 - A small amount of arcing may occur when connecting an EBP to the UPS. This is normal and will not harm personnel. Insert the EBP cable into the UPS battery connector quickly and firmly. Connect red to red, black to black, and yellow to yellow. Press the two parts tightly together to ensure a proper connection.
 - To connect a second EBP, unclip the EBP connector on the first EBP and pull gently to extend the wiring to the EBP connector on the second EBP. Repeat for any additional EBPS.
 - The other connection through rear panel:
 - Remove “battery terminal cover” on UPS rear panel and “upper battery terminal cover” on battery pack rear panel.
 - Connect both terminals through the battery cable, which is included in the package. The cable has SBS50 connectors on both ends.
 - If more battery packs are needed, remove the bottom battery terminal cover to connect the next battery pack.
 - Note: Pay attention to the positive and negative electrodes.

Note: Up to four EBPS may be connected to the UPS.



Front panel



Rear panel

5. Verify that the EBP connections are tight, and that adequate bend radius and strain relief exist for each cable.
6. Replace the EBP front cover.
 - To replace the cover, verify that the EBP cables are routed through the EBP cover knockouts, cover connects with the cover hook near the left side of the EBP cabinet. Repeat for each additional EBP.
 - Put the front panel side with display to the panel port, put another side to the other two ports, then press it until the panel and the chassis are combined tightly.
7. Verify that all wiring connecting the UPS and EBP(s) is installed behind the front covers and is inaccessible to users.

This is a Class A product. In home environment, this product may cause radio interference. In this case, the user may be required to take appropriate measures.

Hereby ASSMANN Electronic GmbH declares that the Declaration of Conformity is part of the shipping content. If the Declaration of Conformity is missing, you can request it by post under the below mentioned manufacturer address.

www.assmann.com

Assmann Electronic GmbH

Auf dem Schüffel 3

58513 Lüdenscheid

Germany

