

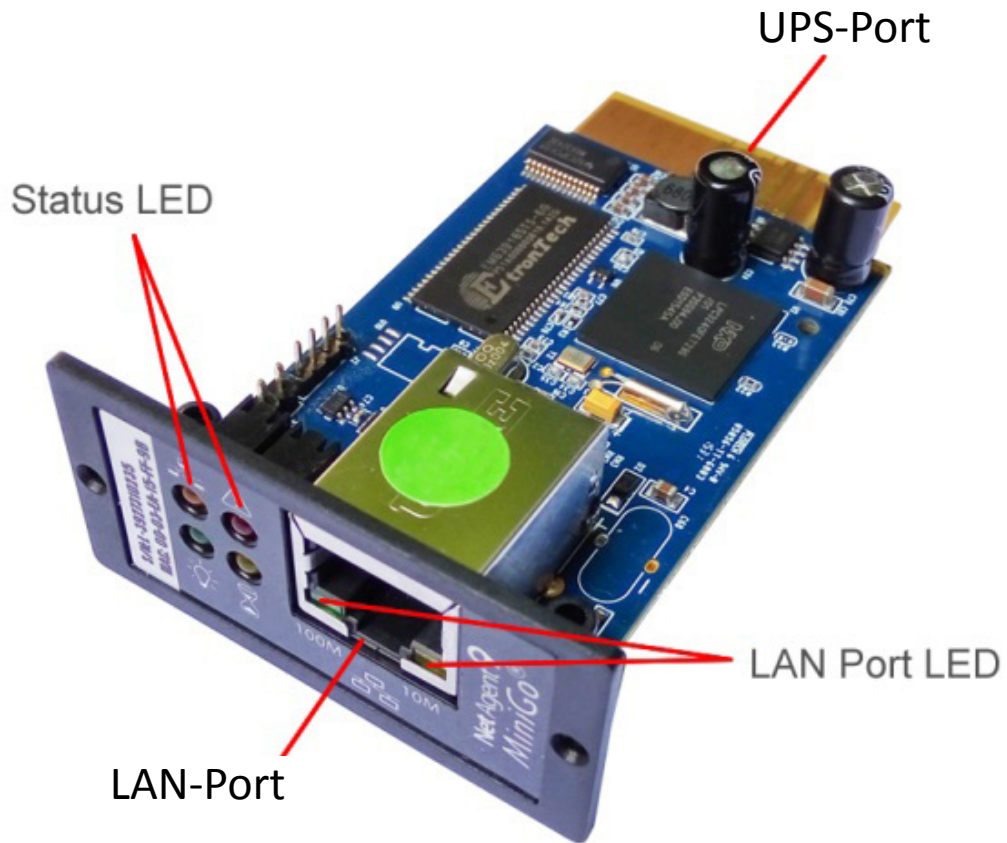


**SNMP & WEB Card for  
DIGITUS® Professional OnLine UPS  
systems**

**Quick Installation Guide**

DN-170089, DN-170090, DN-170091, DN-170092

## 1. Overview



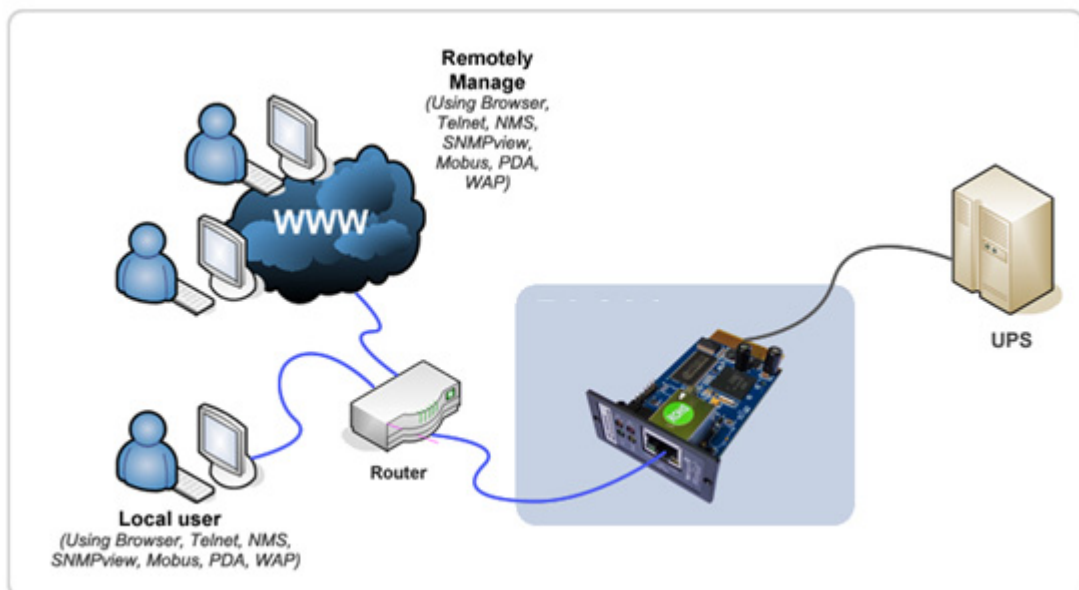
| Light signal application - Status LED |           |          |                              |
|---------------------------------------|-----------|----------|------------------------------|
| Yellow                                | Red       | Green    | Status                       |
| Solid Off                             | Solid Off | Solid ON | Power ON                     |
| Flashing                              | Solid ON  | Solid ON | System initial               |
| Solid ON                              | Solid Off | Solid ON | Normal operation             |
| Solid ON                              | Flashing  | Solid ON | No connection to UPS         |
| Flashing                              | Flashing  | Solid ON | Writing data to flash memory |
| Green light : Power state             |           |          |                              |
| Red light : Connection state with UPS |           |          |                              |

| Light signal application - LAN Port LED |   |
|---|---|
| Light color                             | Condition description   |
| Green                                   | On: Internet correspond speed is 100M<br>Flash: Data transmitting |
| Yellow                                  | On: Internet correspond speed is 10M<br>Flash: Data transmitting  |

## 2. Installation and Connection

**Step 1:** Insert the SNMP Card into the slot of UPS

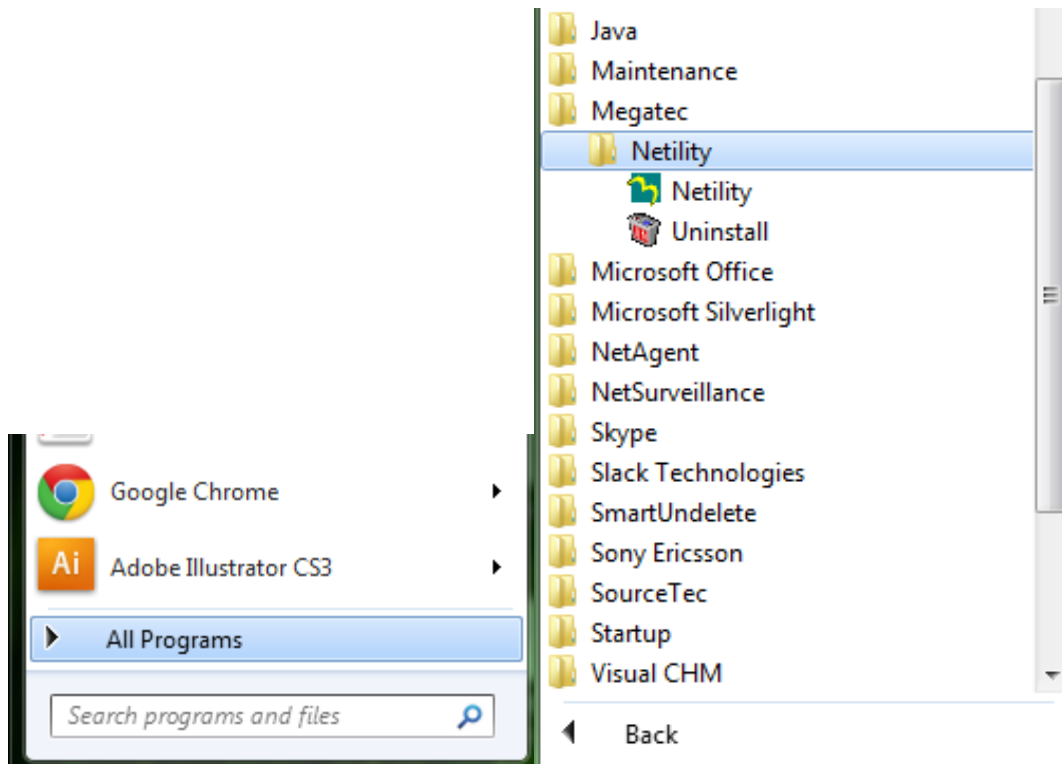
**Step 2:** Connect the SNMP Card to LAN, using the appropriate UTP port.



### 3. Configuration

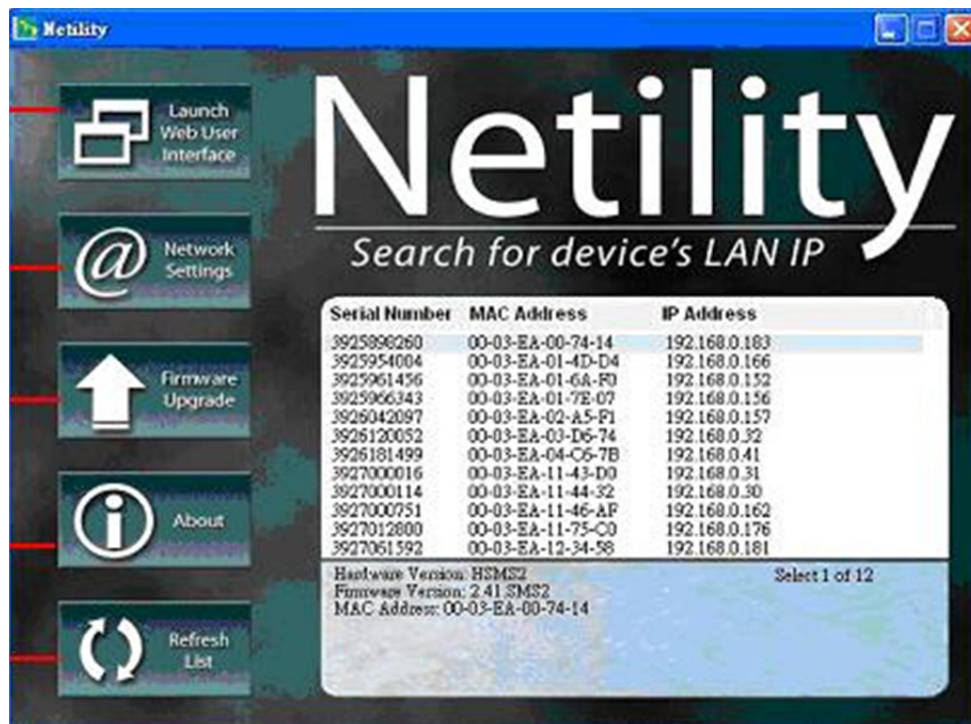
#### a) Install Netility

Please install Netility.exe in your PC. After software is successfully installed, there will be a 'Netility' group in Windows 'Start' → 'Program Group'. Click "Netility" to initiate the Netility and enter the mail window for configuration.



#### b) Using Netility

The main window of Netility is here below, right table is to show you all SNMP cards be searched in LAN; left side is function selection menu.



### ❶ Launch Device

Click Launch Device or double click the SNMP card listed in the table to launch it.

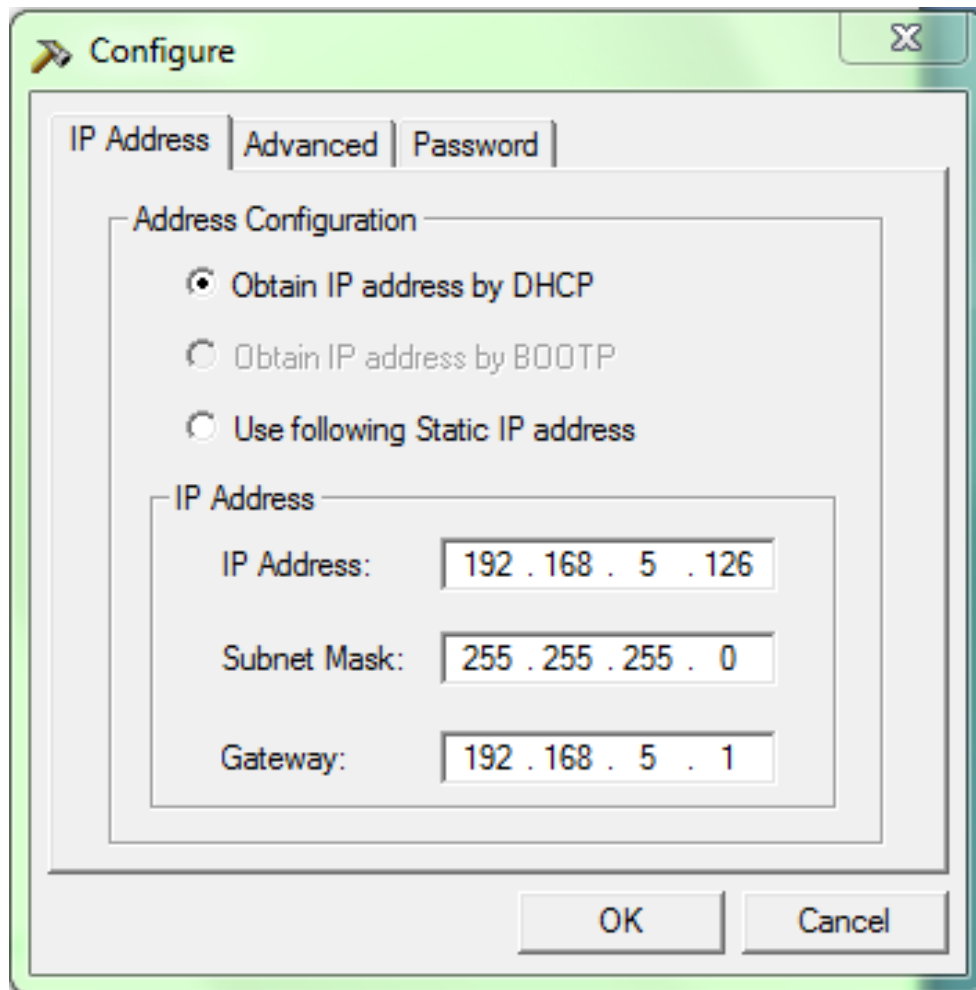
Enter the Account (Login Name) and the Password (Login Password) set earlier to login. If you did not configure one, then just click Apply to login.

### ❷ Network Settings

Choose the SNMP card from the right of the screen, then click "Configure". It would show the following setting page.

#### IP Address: Set IP address for UPS

When using at the first time, please set IP address; subnet mask; and gateway. After setting, enter IP address from Telnet or Browser to connect to SNMP website.



When using DHCP or BOOTP to set up IP address, IP address, Subnet Mask and Gateway would receive directly by the system.

### **Advanced: Advanced UPS Setting**

In order to ensure the secure management of UPS, Netility provides two protecting function:

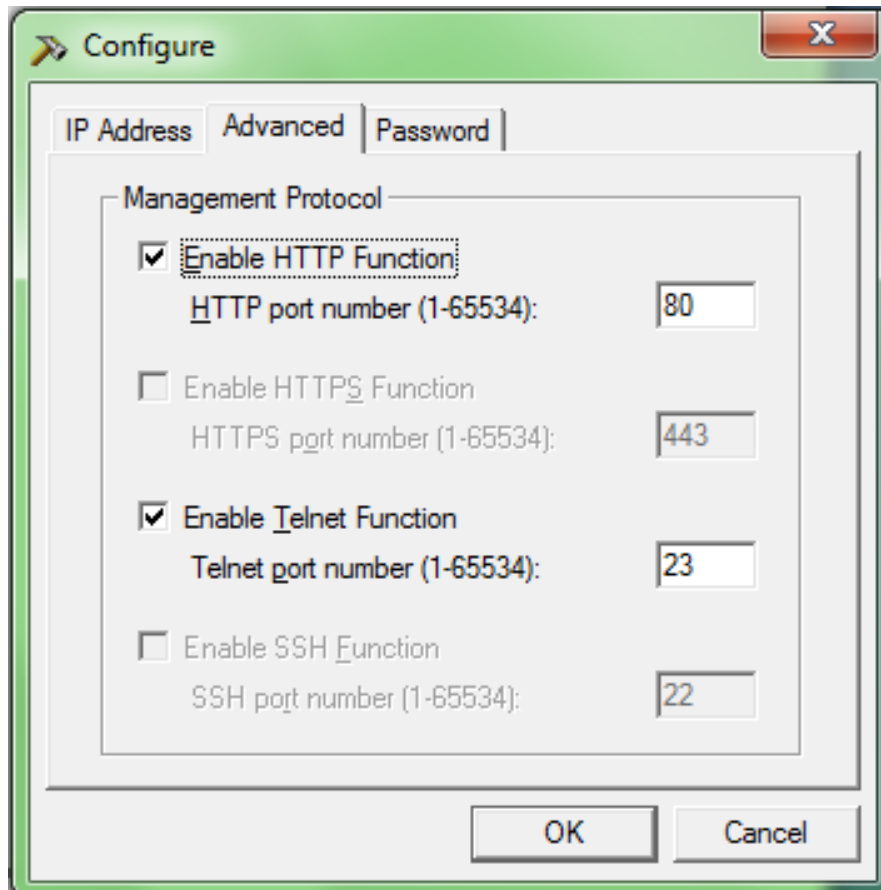
#### **Management Protocol**

UPS provides HTTP/HTTPS (WEB) and Telnet to reference any related parameter setting for the manager. Concerning with security, the manager could build use openly or any advance port setting methods. Followings are the description:

1. At advanced setting, two functions were set as activated by using port number 80 and 23 for Http and Telnet. As for Https and SSH are 443 and 22.
2. Untick means not using the function.
3. When set to the other port value, full IP Address must be entered in order to login to the website or Telnet.

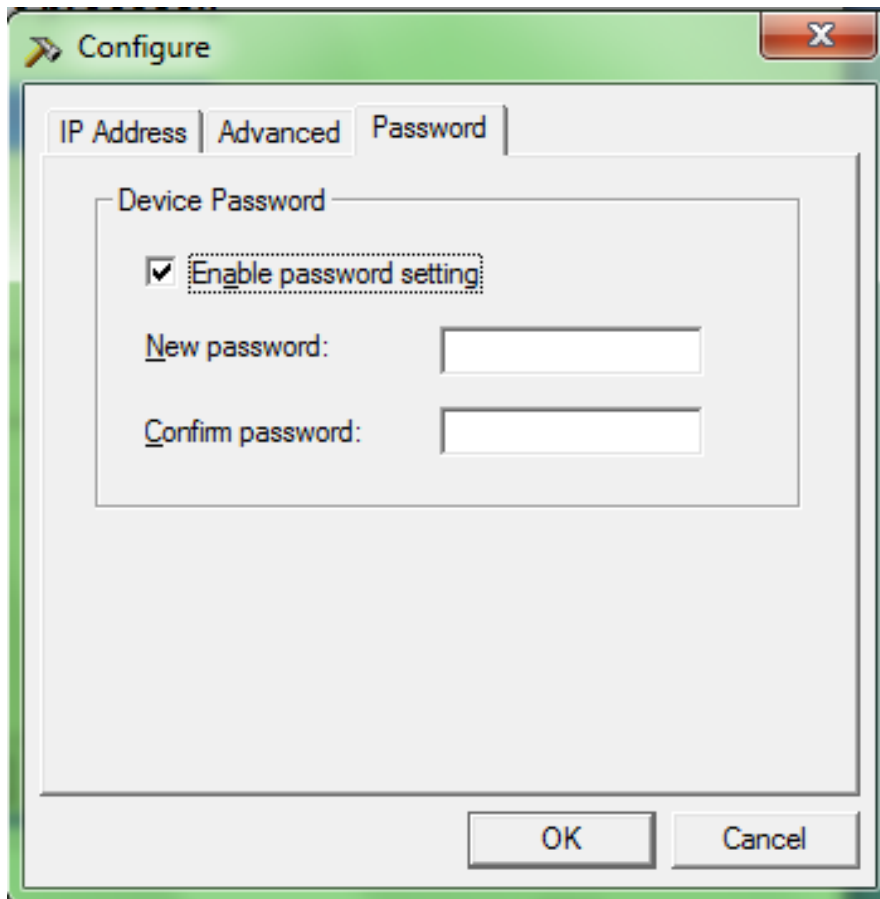
**For example:**

- ☞ Set 81 as HTTP port number, then <http://192.168.5.126:81> must be typed at the web address to proceed to DL801 UPS's website.
- ☞ Set 23 as Telnet port number, then "192.168.5.126:24" must be typed at Telnet to proceed to the Telnet screen of DL801 UPS.



**Password:**

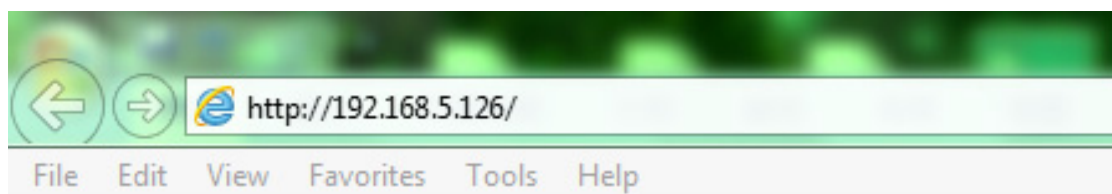
After password setting here, there is no way to give any command to UPS by Netility software without user's password. **(NB. If lose this password, UPS will never be able to complete any upgrade process.)**



#### 4. Monitoring

You are now able to go to SNMP web site to monitor and control UPS by inputting SNMP IP address in Browser.

- 1 Starting the Web Brower (Netscape or Internet Explore)
- 2 Enter the IP Address (Which is setting on Netility, e.g. 192.168.5.126).

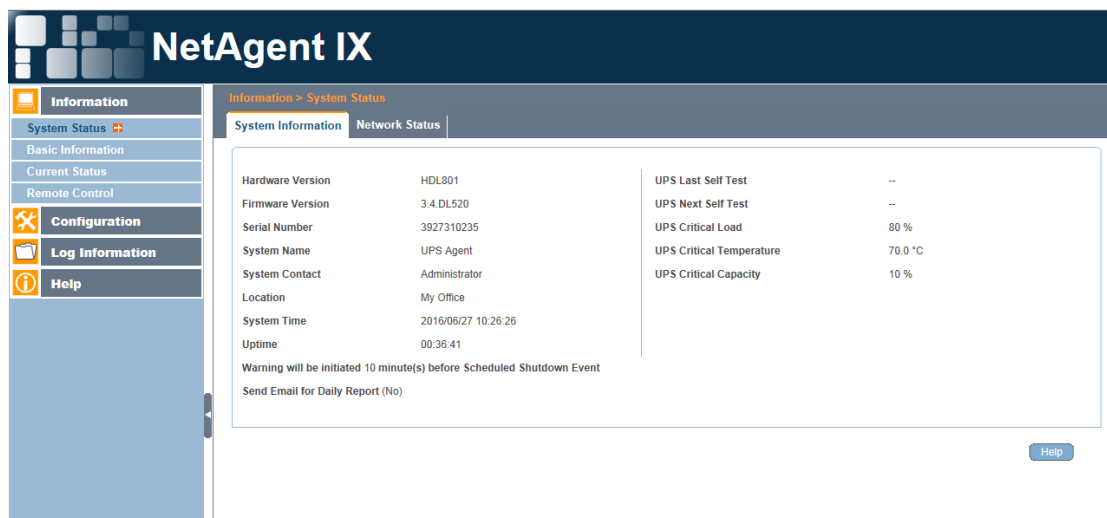


- 3 On the first screen, enter the current password. If no password has been set, just press [ENTER].





[Configuration] menu item to set all the configuration items. Then the UPS status could be correctly revealed by other pages.



For the specific operation, please refer to the product manual, or contact our technical support.

Hereby Assmann Electronic GmbH, declares that the Declaration of Conformity is part of the shipping content. If the Declaration of Conformity is missing, you can request it by post under the below mentioned manufacturer address.

**[www.assmann.com](http://www.assmann.com)**

Assmann Electronic GmbH

Auf dem Schüffel 3

58513 Lüdenscheid

Germany

