



NETWORK VIDEO RECORDER DIGITUS® PLUG&VIEW NVR




Quick Installation Guide

DN-16150

1.1 Front Panel

NVR Front Panel



Item	Key Name or Indicator	Remark	Function & Description
1	Power Indicator	PWR	If the "Green" indicator is on, NVR is getting power normally.
2	HDD Indicator	HDD	If the "Red" indicator flashes, the hard drive is being read or written to. If the indicator is always on, it means the hard disk is abnormal, unformatted or has no recording files.
3	USB		USB port for USB mouse or USB pen drive

1.2 Rear Panel

NVR Rear Panel



Item	Physical Port	Connection Method
1	Power Port	Start-up and shutdown with DC12V power
2	USB Port	Connect USB devices, such as USB mouse and USB flash disk
3	HDMI Port	HDMI high definition port
4	VGA Port	Connect to VGA monitor, such as PC monitor
5	AUDIO OUTPUT	Audio signal output, RCA interface
6	LAN Port	Network interfaces, connect to local network

Chapter 2 NVR Connection

2.1 HDD Installation

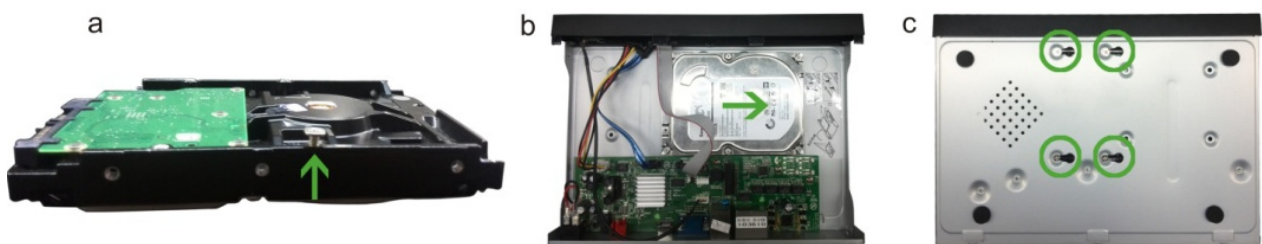
Caution: Please do not take out hard drive when NVR is running!

HDD Installation:

- (1) Cut power first, then remove the screws on both sides and rear panel and open the NVR upper cover.



- (2)
 1. Insert 4 hard drive screws into the bottom of the hard drive and tighten them 1/2 of the way.
 2. Place the hard drive in the screw slots with the power and data connectors facing left (if looking at the NVR from the front), and slide the hard drive into place.
 3. Tighten the hard drive screws to secure the hard drive in place.

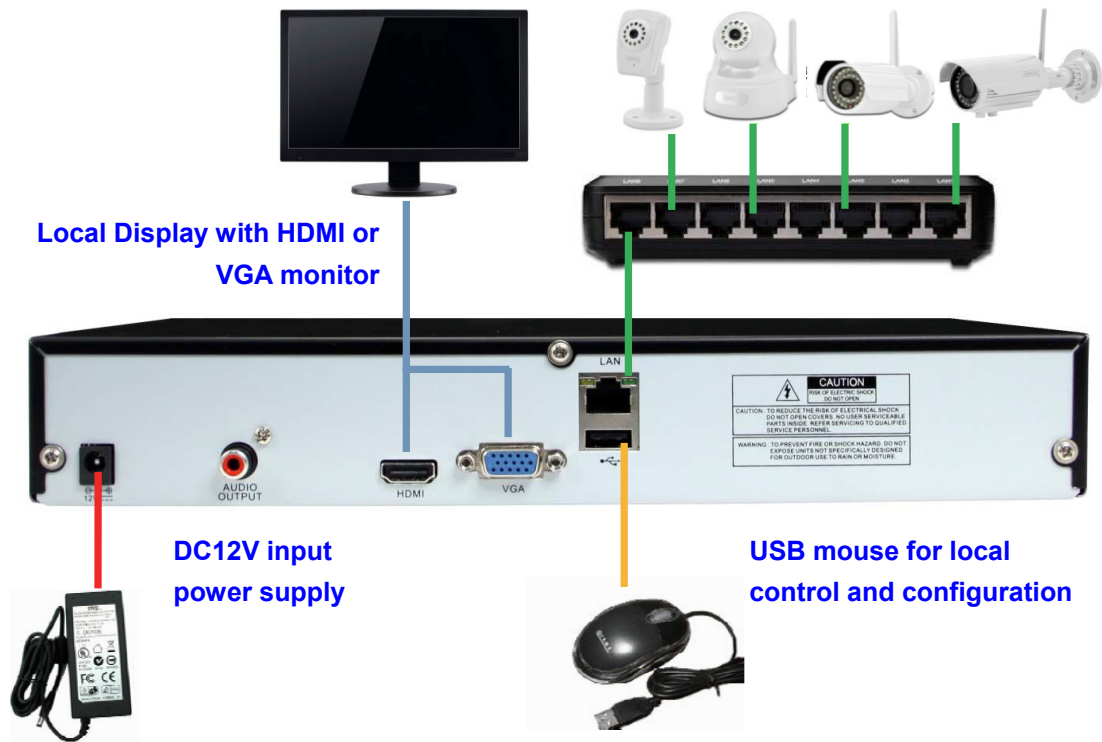


- (3) Connect the HDD data cable and power cable to the main board. Install the HDD and fix it on the bracket; then connect the HDD power cable and data cable.

2.2 Setup

After hard disk installation, connect the NVR to the router or Ethernet switch using an Ethernet cable to the LAN port on the NVR. Then connect either a VGA or HDMI monitor to the NVR as local display. Also connect USB mouse to the USB port on the NVR to setup configuration. Then power on the NVR with the DC12V power adapter.

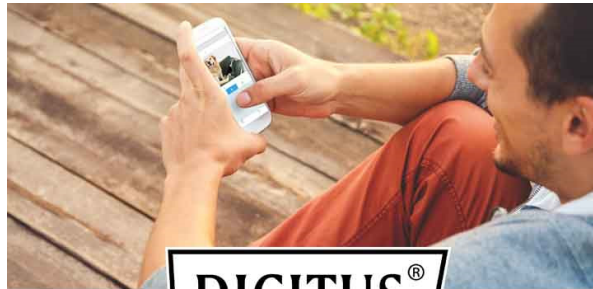
In parallel, install up to 4 DIGITUS Plug & View cameras via a router or Ethernet switch on the same network as the NVR.



Chapter 3 NVR Boot Up

3.1 System Initialization

On the local display with the VGA or HDMI monitor, after connecting the power cable of the NVR to a wall outlet and pressing the power button, you will see on screen that the NVR system is initializing, as shown below.



DIGITUS®

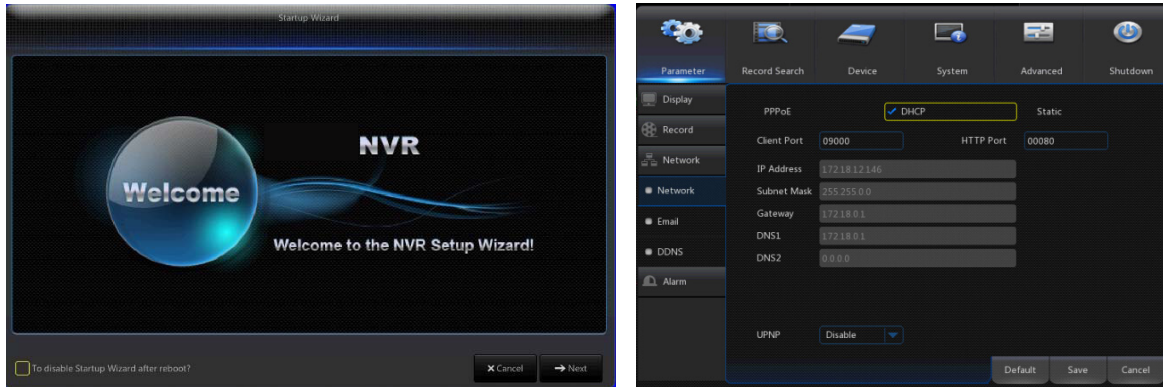
Always know what's going on at home.

3.2 Setup Wizard

After NVR start-up is completed, enter “admin” for both login and password to login. The “Setup Wizard” will be displayed. Follow the “Setup Wizard” to guide you through the first time installation.

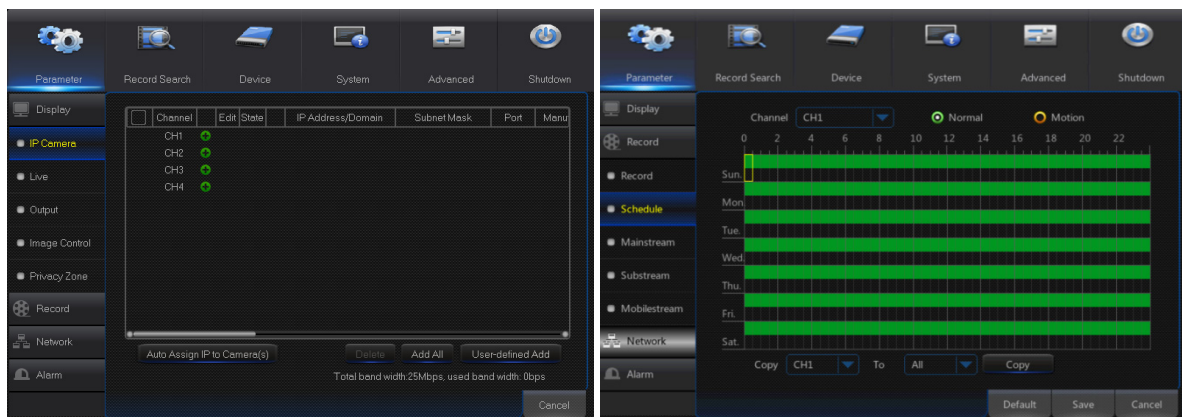
Wizard setting menu includes: Homepage, Network Setup, IPC Setup, Record Schedule and Hard Disk Maintenance.

1. Homepage and Network Setup. On the Network Setup page, keep the default “DHCP” setting as the NVR will be assigned with an IP address automatically when it is connected to the router or access point.



2. IPC Setup: On this page, you add and delete IP cameras. It automatically searches all the DIGITUS Plug & View IP cameras installed under the same network as the NVR. Then you select the desired cameras for recording to NVR by enabling the channels.

Record Schedule: On this page, you set recording time and scheduled recording of the NVR.

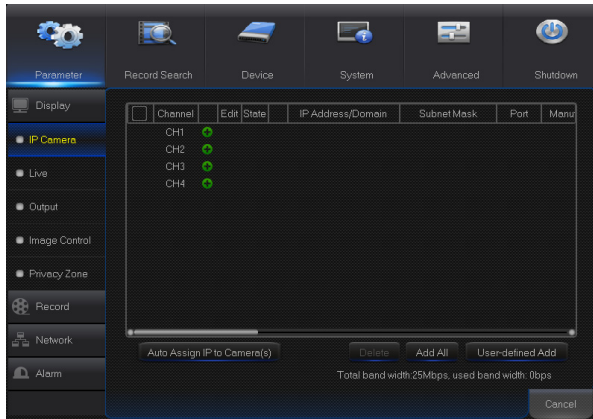



3. HDD: It supports HDD formatting and overwriting setting.



Chapter 4 NVR Menu

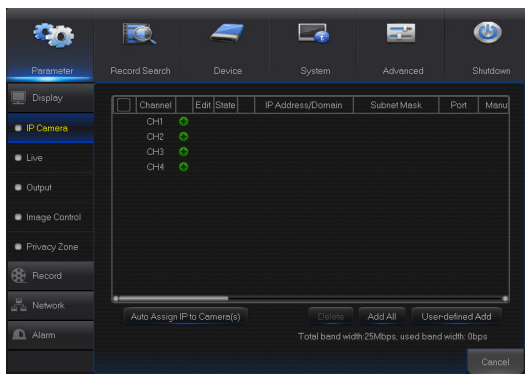
4.1 Main Menu



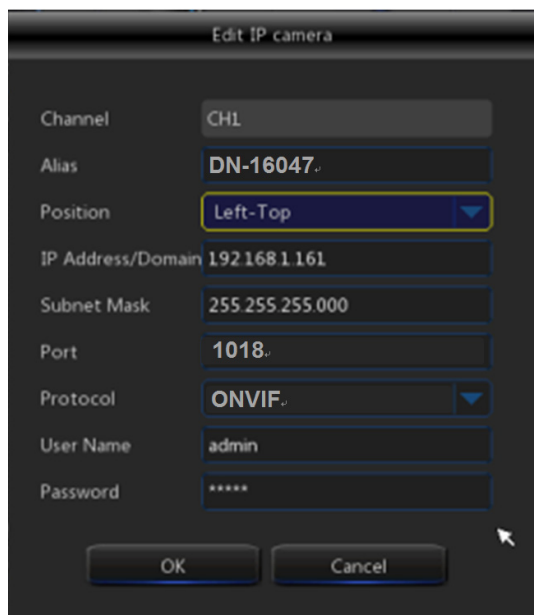
In LIVE mode, click or press the [Menu] button on the remote control, or click the [] icon in the toolbar to enter the main menu for more setting options.

4.2 IP Camera

Go to “Main Menu” → “Parameter” → “Display” → “IP Camera” to enter the menu as shown below.



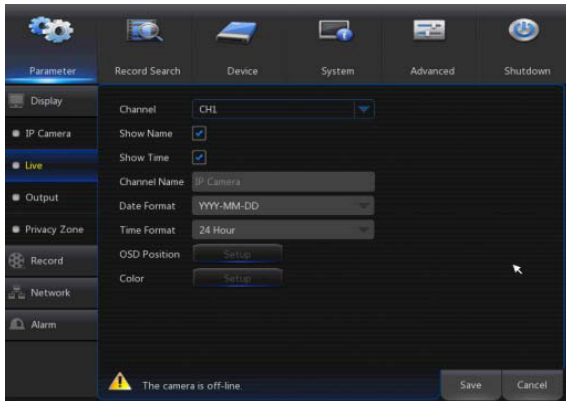
- **Channel:** IP camera channel.
- **Edit:** Modify the name and location of channels, change settings.
- **State:** Display camera online status.
- **IP Address/Domain:** IP address of the IP camera connected of the channel.
- **Subnet Mask:** IP camera subnet mask.
- **Port:** Connection port number of the currently set IP camera.



- **Alias:** The name you can give to the camera.
- **IP Address/Domain:** IP address should be automatically assigned by the router.
- **Subnet Mask:** IP camera subnet mask.
- **Port:** The port number is normally automatically detected and displayed. If it is not displayed, for DIGITUS Plug & View Revision1 camera, the port number is 80. For Revision2 camera, the port number is 1018.
- **User Name:** Enter “admin”.
- **Password:** Enter “admin”.

4.3 Live View

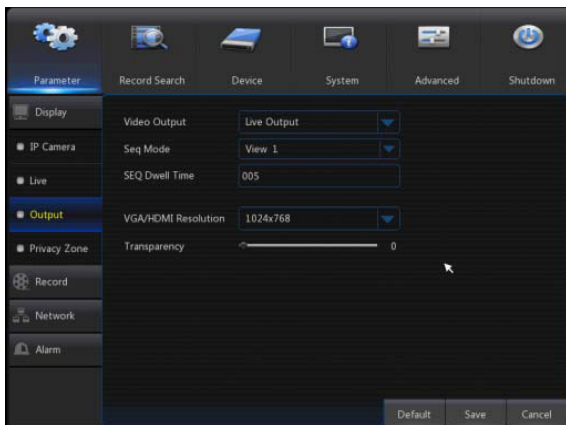
Go to “Main Menu” → “Parameter” → “Display” → “Live” to enter the menu as shown below.



- **Channel:** Select channel number.
- **Show Time:** Tick the checkbox to display the time.
- **Channel Name:** Name marked on IP camera.
- **Date Format:** Set date format such as mm/dd/yyyy or yyyy/mm/dd.
- **Time Format:** 12-hour or 24-hour.
- **OSD Position:** Freely set the position of IP camera name and time.

4.4 Output

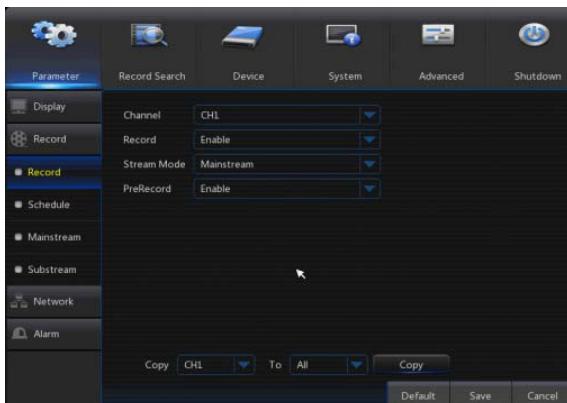
Go to “Main Menu” → “Parameter” → “Display” → “Output” to enter the menu as shown below.



- **Video Output:** Live output.
- **Seq Mode:** Set sequence mode.
- **SEQ Dwell Time:** Sequence dwell time is 5 seconds by default. You may set it as required.
- **VGA/HDMI Resolution:** VGA output or HDMI output. Including 1024×768, 1280×1024, 1440×900, 1280×720, 1920×1080
- **Transparency:** Set the transparency of the menu in the range of 0-128.

4.5 Record

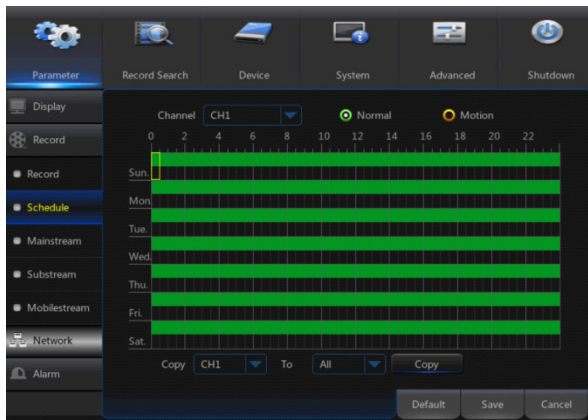
Go to “Main Menu” → “Parameter” → “Record” → “Record” to enter the menu as shown below.



- **Channel:** Set the desired channel in the drop-down menu.
- **Record:** Set up the record status (Enable/Disable) of each channel.
- **Stream Mode:** Select Mainstream or Substream.
- **PreRecord:** “Enable” status supports pre-record for motion detection record

4.6 Schedule

Go to “Main Menu” → “Parameter” → “Record” → “Schedule” to enter the Schedule interface and set the recording schedule of the NVR.



Select the channel and the date to be set. One week's schedule can be set.

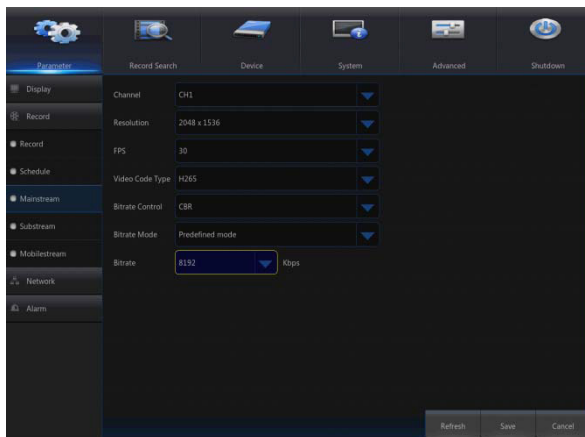
The recording schedule of the current channel can be copied to any other channel or all channels.

Note:

1. In the Record menu and Record Search menu, No Color stands for no record.
2. “Green” stands for normal record and “yellow” stands for motion record.

4.7 Mainstream/Substream

Go to “Main Menu” → “Parameter” → “Record” → “Mainstream/Substream” to enter the menu as shown below.

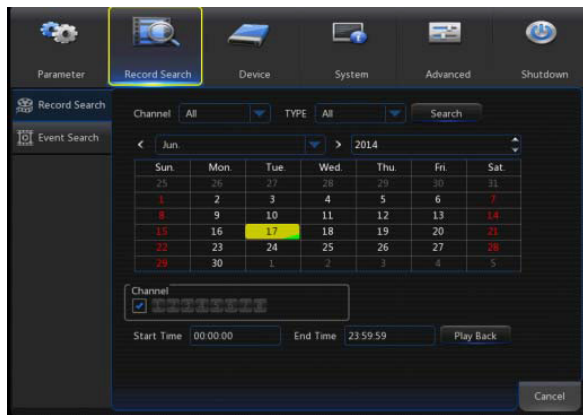


Mainstream and substream are the two video streams of the IPC. Mainstream is mostly used for recording and the substream is mostly used for remote network monitoring.

- **Channel:** Select a channel.
- **Resolution:** Set camera resolution.
- **FPS:** Min 1 and max 30.
- **Video Code Type:** H.264.
- **Bitrate:** Set IPC bitrate.

4.8 Record Search

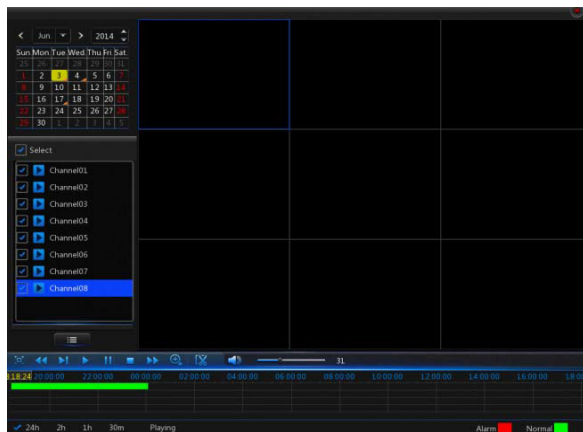
Go to “Main Menu” → “Record Search” → “Record Search” to enter the menu as shown below.



- **Channel:** Select the channel you want to search.
- **Type:** There are two options besides All: Normal and Motion.
- **Start Time/End Time:** Select the specific period of time. The default setting is from 0:00 to 24:00.
- **Playback Channel:** Click a date and select the corresponding channel in Playback Channel.

Playback: Select the desired year and month and click “Search”. If there are any records, a green corner mark which shows the recording at the specified date will appear in the bottom right corner of the date sheet. Select the date checkbox and select the playback channel; then click Playback to enter the menu.

- **Playback menu:** You can use the Playback control bar to operate Fast Forward (X2, X4, X8 and X16), Rewind (X2, X4, X8 and X16), Slow play (1/2, 1/4 and 1/8 speed), Play, Pause/Frame. Click or drag the volume control bar to adjust the volume. When playback ends, the NVR will remain in the playback menu.



4.9 Play Backup Files

1. Copy backup files to the computer.
2. Open playback player and click “+” or “Open file”. For example, if you want to select *.264, add backup file and select a file to play





Play: Click to play file.



Pause: Click to pause.



Stop: Click to stop playback.



Next: Click to play next file.



Previous: Click to play previous file.



Slow Play: click to play at 1/2, 1/4, 1/8, 1/16 speed.



Fast Play: click to play at 2x, 4x, 8x, 16x speed.



Open file.



Full screen display.



Never on top.



Always on top.



On top during playing.



Screenshot: Save path: installation directory\Video Client\Capture.



Adjust volume.



Add folder or file.



Delete file in the list.



Delete all files in the list.

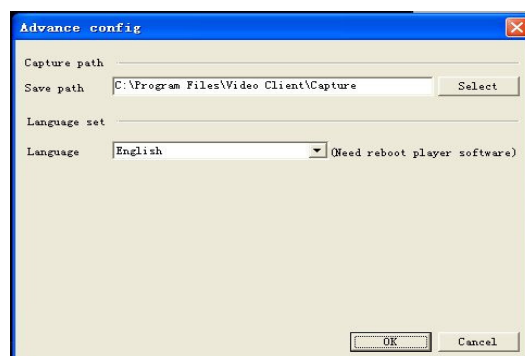


Expand/pack up the list.



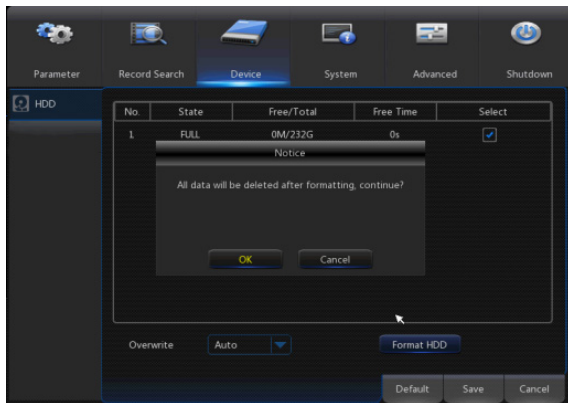
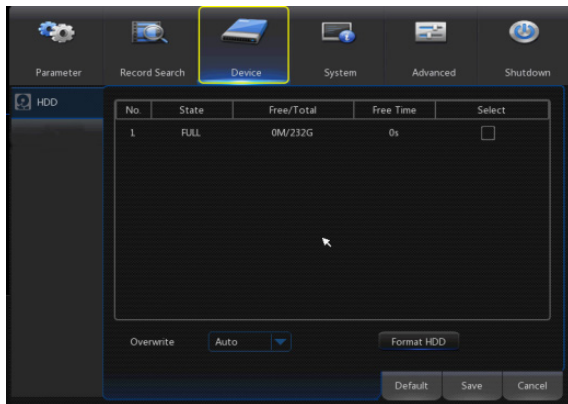
Advanced configuration: Set the save path for the captured pictures and set the display

language of the player.



5.0 Device

Go to “Main Menu” → “Device” → “HDD” to enter the menu as shown below.



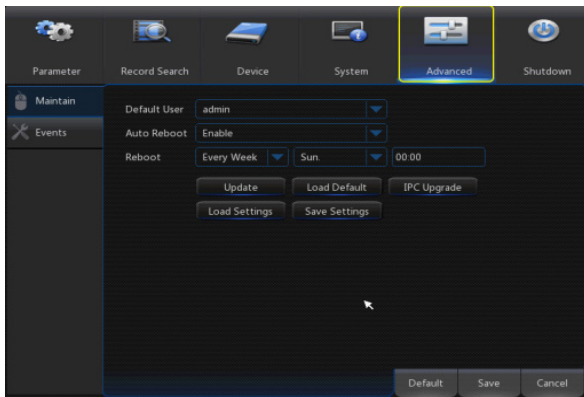
- When NVR is connected to a HDD, the system will automatically detect if HDD is normal or not; if HDD needs to be formatted, the status will be shown as “Not formatted”. Select the HDD and format the HDD. If the system detects HDD is in normal state, the HDD status will be shown as “Normal”.
- **No.:** Number of HDD connected.
- **State:** It shows the current status of the HDD. Available only when HDD is “Normal”.
- **Free/Total Space:** Remaining or total space of HDD.
- **Free Time:** Remaining time for HDD recording according to currently set “Resolution”, “Encoding Rate” and “Frame Rate” of image.
- **Overwrite:** When set to AUTO, the NVR will overwrite the oldest files on the hard drive if hard drive space is full. When set to DISABLE, the NVR will stop recording if the hard drive space is full. Overwrite time: 1 day, 3 days, 7 days, 14 days, 30 days and 90 days. It means the longest storage time of records on the HDD. If the time expires, the records will be deleted. For example, if the time is set to 3 hours and the data on the HDD include 12, 13, 14, 15, 16, 17, 18, 19 and 20 o'clock, then data 18, 19 and 20 will be saved and data 12, 13, 14, 15, 16 and 17 will be deleted.
- **Format HDD:** Format HDD for first use.

Note: Recording can only be performed when HDD is in “Normal” state.

5.1 Advanced

Maintain

Go to “Main Menu” → “Advanced” → “Maintain” to enter the menu as shown below.

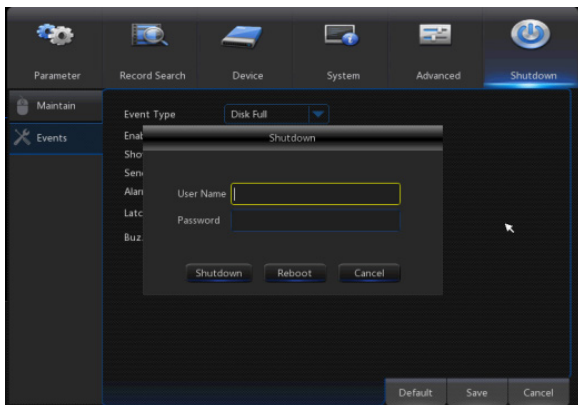


- **Auto Reboot:** Enable the auto maintenance function to reboot system regularly at every day/week/month. When Auto Reboot is enabled, the NVR should be in the main menu and no user operation.
- **Upgrade:** Decompress update file package and copy the upgrade file folder named “nvrupgrade” (the upgrade program is inside) to the root directory of a USB stick; insert the USB stick in the USB port of the NVR; click <Update>.
- **Load Default:** If [Load Default] is selected, you can initialize the system to the factory default setting. Click “Load Default” and select items to be restored.
- **Load Settings:** Load parameters from the removable storage device to the NVR.
- **Save Settings:** Save the set parameters of user’s NVR to the removable storage device.

5.2 Shutdown

Go to “Main Menu” → “Shutdown” to enter the menu as below picture.

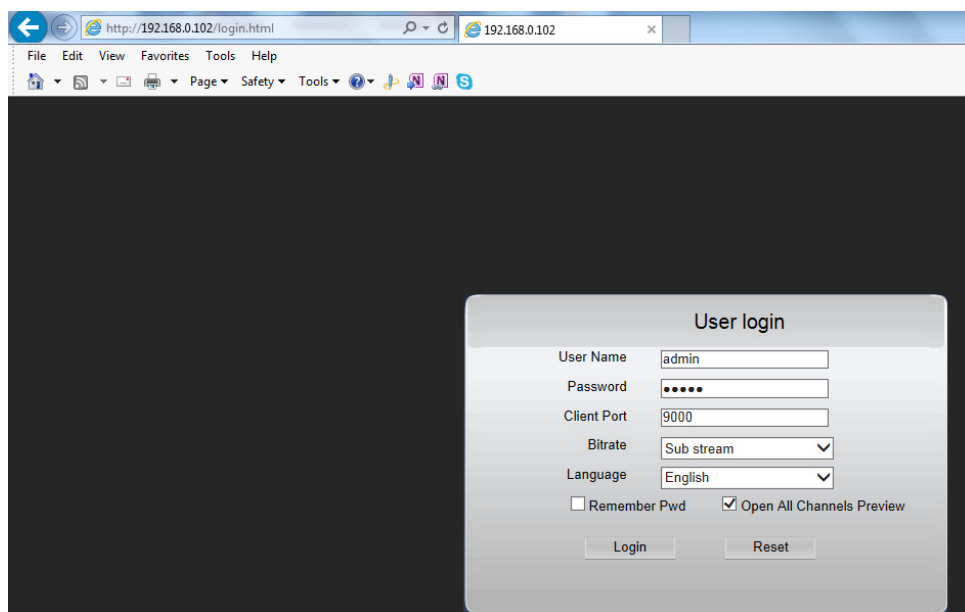
Shutdown function requires you to login by entering user name and password to shut down or reboot the system.



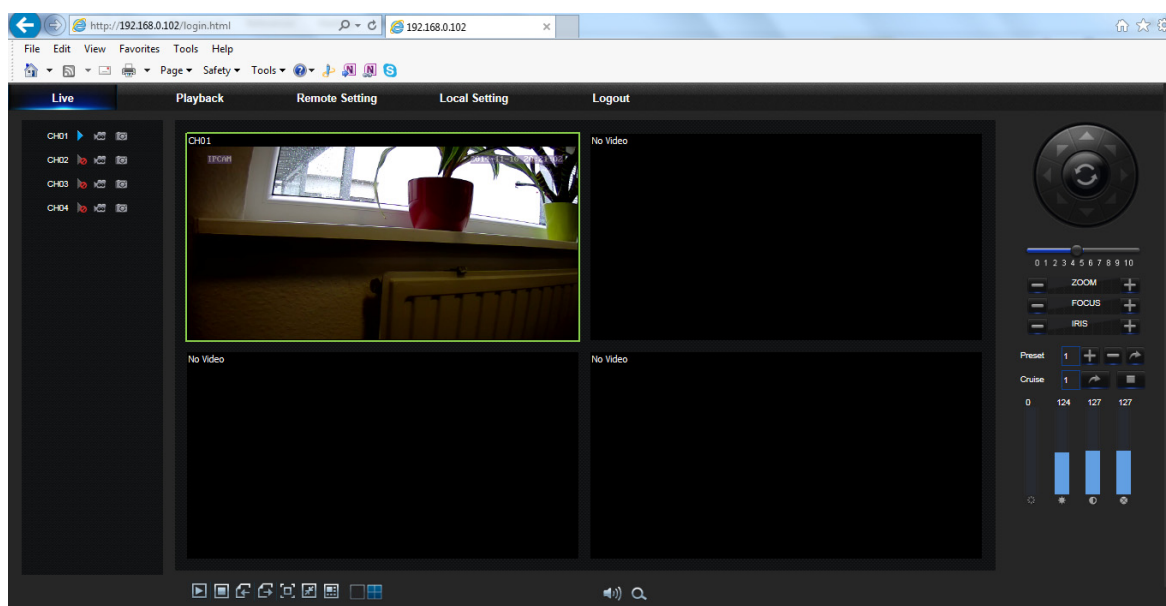
6.0 Web UI Access via Browser

Open your web browser (Internet Explorer, Firefox or Chrome) and enter the IP address of the NVR, such as: <http://192.168.1.168>. If your computer is connected to the Internet it will download and install “ActiveX” plug-in manually. If your computer system is Windows Vista or Windows 7, you may need to setup the user authority for remote control, or you may be unable to backup or record. You can also find the IP address of the NVR on the local display of your VGA or HDMI monitor under “Network” settings.

After ActiveX controls installation, enter “admin” as your user name and “admin” as your password to login. Select Main stream or Sub stream (in general, select Main stream for intranet and Sub stream for Internet), then select the language.



6.1 Live Interface



7.0 Mobile Access:

Please download “Digitus Recorder” APP from the APP store or Google Play to see live-view and playback from smart phones.

Hereby ASSMANN Electronic GmbH, declares that this device is in compliance with the requirements of Directive 2014/30/EU (EMC), Directive 2014/35/EU (LVD) and the Directive 2011/65/EU for RoHS compliance. The complete declaration of conformity can be requested by post under the below mentioned manufacturer address.

Note:

If wrongly installed or improperly used in the living area, the device can cause interference in radios and other electronic devices. Appropriate use is when the device, as far as feasible, is operated with shielded connection cables (with network products in addition to category 5 shielded cables and higher). The device has been tested and falls within the limits of class A computing equipment according to the requirements of EN 55022.

Warning:

This device conforms with test category A - it can cause radio interference in the living area; in this case the operator may demand that appropriate measures are implemented and arise for this reason. Declaration of conformity: The device fulfills the EMV requirements according to EN 55022 for ITE and EN 55024 class A. Devices with external or integrated power supply furthermore fulfill the requirements of EN 61000-3-2 and EN 61000-3-3. In this way, the fundamental protection requirements of the EMV-2014/30/EU guideline are fulfilled.

www.assmann.com

Assmann Electronic GmbH
Auf dem Schüffel 3
58513 Lüdenscheid
Germany

