



OUTDOOR IR NETWORK CAMERA SERIES

User Manual

Please read instructions thoroughly before operation and retain it for future reference.

IMPORTANT SAFEGUARD



All lead-free products offered by the company comply with the requirements of the European law on the Restriction of Hazardous Substances (RoHS) directive, which means our manufacture processes and products are strictly "lead-free" and without the hazardous substances cited in the directive.



The crossed-out wheeled bin mark symbolizes that within the European Union the product must be collected separately at the product end-of-life. This applies to your product and any peripherals marked with this symbol. Do not dispose of these products as unsorted municipal waste. Contact your local dealer for procedures for recycling this equipment.

Trademark Acknowledgements

iPhone® is the registered trademark of Apple Inc.

BlackBerry® and related trademarks, names and logos are the property of Research In Motion Limited and are registered and/or used in the U.S. and countries around the world. Used under license from Research In Motion Limited.

Android™ is a trademark of Google Inc. Use of this trademark is subject to Google Permissions.

Microsoft, Windows, Internet Explorer, Mozilla FireFox, Google Chrome, QuickTime, Windows Mobile & Symbian mentioned in this document are the registered trademarks of their respective holders.

Disclaimer

We reserve the right to revise or remove any content in this manual at any time. We do not warrant or assume any legal liability or responsibility for the accuracy, completeness, or usefulness of this manual. The content of this manual is subject to change without notice.

Trademark Acknowledgements

Internet Explorer, Microsoft, Windows, Mozilla & QuickTime are registered trademarks of the respective holders.

MPEG4 Licensing

THIS PRODUCT IS LICENSED UNDER THE MPEG4 VISUAL PATENT PORTFOLIO LICENSE FOR THE PERSONAL AND NON-COMMERCIAL USE OF A CONSUMER FOR (i) ENCODING VIDEO IN COMPLIANCE WITH THE MPEG4 VISUAL STANDARD ("MPEG-4 VIDEO") AND/OR (ii) DECODING MPEG4 VIDEO THAT WAS ENCODED BY A CONSUMER ENGAGED IN A PERSONAL AND NON-COMMERCIAL ACTIVITY AND/OR WAS OBTAINED FROM A VIDEO PROVIDER LICENSED BY MPEG LA TO PROVIDE MPEG4 VIDEO. NO LICENSE IS GRANTED OR SHALL BE IMPLIED FOR ANY OTHER USE. ADDITIONAL INFORMATION INCLUDING THAT RELATING TO PROMOTIONAL INTERNAL AND COMMERCIAL USES AND LICENSING MAY BE OBTAINED FROM MPEG LA, LLC. SEE [HTTP://WWW.MPEGLA.COM](http://www.mpegla.com).

GPL Licensing



This product contains codes which are developed by Third-Party-Companies and which are subject to the GNU General Public License ("GPL") or the GNU Lesser Public License ("LGPL").

The GPL Code used in this product is released without warranty and is subject to the copyright of the corresponding author.

Further source codes which are subject to the GPL-licenses are available upon request.

We are pleased to provide our modifications to the Linux Kernel, as well as a few new commands, and some tools to get you into the code. The codes are provided on the FTP site, and please download them from the following site or you can refer to your distributor:

<ftp://ftp.dvrtw.com.tw/GPL/AV074/>

TABLE OF CONTENTS

1.1 Product Features.....	1
1.2 Package Content.....	1
1.3 Dimensions	1
1.4 Cable Overview.....	1
3.1 Installing Video Viewer	3
3.2 Accessing the camera	3
3.3 Control panel overview.....	4
3.3.1 Simplified Version (Default).....	4
3.3.2 Full Function Version.....	5
3.3.3 Main Button Overview	5
3.4 Frequently-used functions	6
3.4.1 Record.....	6
3.4.2 Playback.....	6
3.4.3 Firmware Upgrade	7
3.4.4 E-Map.....	7
4.1 Accessing the camera	12
4.2 Control panel overview.....	13
4.3 IVS configurations	14
4.3.1 Intelligent Video System.....	14
4.3.2 Face Tracking.....	15
4.4 Digital PTZ (DPTZ) operations	16
4.5 System configuration menu.....	17
4.6 Network	18
4.6.1 Network.....	18
4.6.2 DDNS	18
4.6.3 SNTP	18
4.6.4 FTP.....	18
4.6.5 MAIL.....	19
4.6.6 Filter	19
4.7 Camera	20
4.7.1 System	20
4.7.2 Camera.....	20
4.7.3 Preset.....	21
4.7.4 Cruise.....	21
4.7.5 Color.....	22
4.7.6 Time.....	23
4.8 General	23
4.8.1 General.....	23
4.8.2 Server Log.....	23
4.8.3 Online	24
4.8.4 Account.....	24
4.8.5 Trigger	25
4.8.6 Upgrade / Configure.....	26

1. OVERVIEW

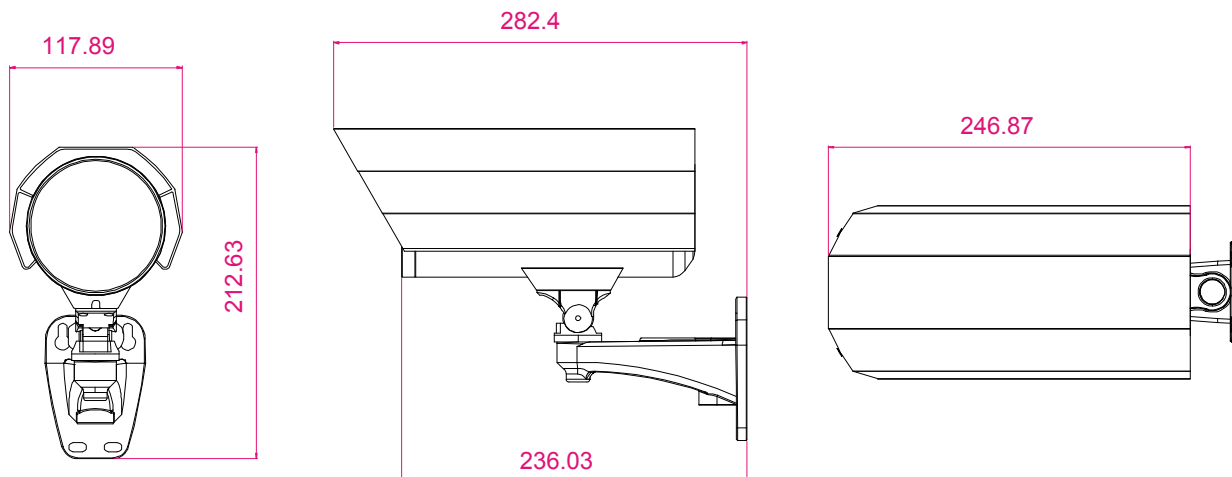
1.1 Product Features

- Free CMS software with E-Map for multiple devices control & surveillance
- Smart Light Control to avoid overexposure
- Motion detection & notification
- Excellent outdoor design with cable management and IP67
- IVS function support: Virtual fence / flow counting / one-way pass
- Face Tracking support to zoom in on intruders with clear images
- 1.3 Megapixel for clear and accurate images
- Digital pan / tilt / zoom support for wide area monitoring

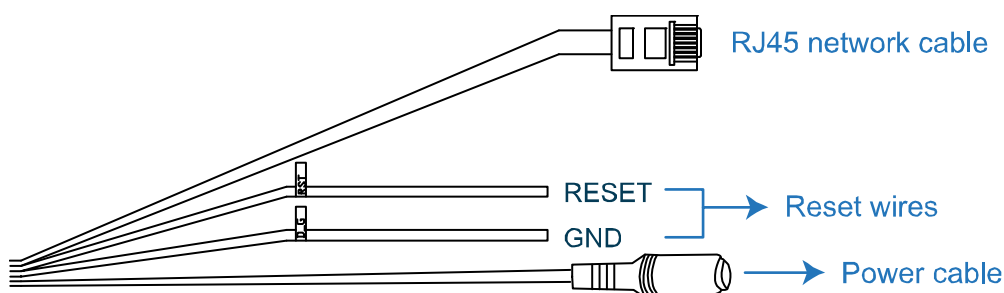
1.2 Package Content

<input type="checkbox"/> Network camera	<input type="checkbox"/> Installation Sticker
<input type="checkbox"/> Installation Guide	<input type="checkbox"/> RJ45 cable extender adapter
<input type="checkbox"/> CD-ROM disc (including user manuals & CMS software "Video Viewer")	

1.3 Dimensions



1.4 Cable Overview



CABLE	DESCRIPTION
RJ45 network cable	Connect it to the supplied RJ45 cable extender adapter for cable extension, and prepare another RJ45 network cable with suitable length for your connection.
Reset wires	Remove the insulating coating of these two wires, and twist them together to reset default. This will reset all parameters, including the IP address to factory default settings. Note: Disconnect power before twisting these two wires together, and connect to power again for reset default.
Power cable	Connect to DC12V power supply.

2. BEFORE USING YOUR NETWORK CAMERA

This network camera can be accessed via our supplied CMS software “Video Viewer”, the web browser (such as “Microsoft Internet Explorer” or “Mozilla Firefox”), and smart phones with our self-developed program “EagleEyes” installed depending on different using situations.

Note: For details about accessing network cameras via smart phones, please refer to <http://www.eagleeyesccv.com>.

Before using the network camera, make sure:

- 1) You have installed the supplied CMS software, “Video Viewer”, or a web browser.
- 2) You have configured the network settings, and the network connection is fine.

For Video Viewer installation, please refer to “3.1 Installing Video Viewer” at page 3.

For network configurations, please refer to your installation guide.

- To check or configure up to 16 surveillance devices simultaneously with the record function, please use “Video Viewer”.

For details about using Video Viewer, please refer to “3. ACCESSING THE CAMERA VIA VIDEO VIEWER” at page 3, and “4. CAMERA CONFIGURATION” at page 12.



- To check or configure this network camera only, it's recommended to use the web browser “Microsoft Internet Explorer” or “Mozilla Firefox”.

For details about using the web browser, please refer to “4. CAMERA CONFIGURATION” at page 12.

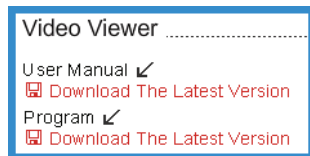



3. ACCESSING THE CAMERA VIA VIDEO VIEWER

3.1 Installing Video Viewer


Step1: Place the supplied CD into your CD-ROM or DVD-ROM drive. The program will be automatically run.


Step2: Click “Program” in the “Video Viewer” section to install Video Viewer, or click “Download The Latest Version” under “Program” to download the latest version of Video Viewer from the Internet (if your PC is connected to Internet).



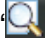


Step3: Follow the on-screen instructions to finish the installation. When the installation is completed, a shortcut icon  will be placed on your PC desktop.

3.2 Accessing the camera

Step1: Double-click  on your PC desktop to open Video Viewer. By default, the “Address Book” panel will be displayed on the right side of the control panel.

Step2: In “Address Book”, click  to key in the IP address, user name, password, and port number of the camera you intend to connect.

OR

Click  →  to search the available IP address(es) of other camera(s) under the same domain as your PC’s IP address. The found address(es) will be listed, and can be added into the address book by clicking .

Step3: Double-click the IP address you just added into the address book to log in. The live view is displayed in the Video Viewer.



3.3 Control panel overview

Two control panels are available and can be switched depending on your using habit.

3.3.1 Simplified Version (Default)



3.3.2 Full Function Version






- Close All Display Views
- Close Current View
- Original Size
- Full Screen
- Display View: 1-Cut
- Display View: 4-Cut
- Display View: 6-Cut
- Display View: 9-Cut
- Display View: 13-Cut
- Display View: 16-Cut
- E-Map
- Record
- Snapshot
- Miscellaneous Control
- Log

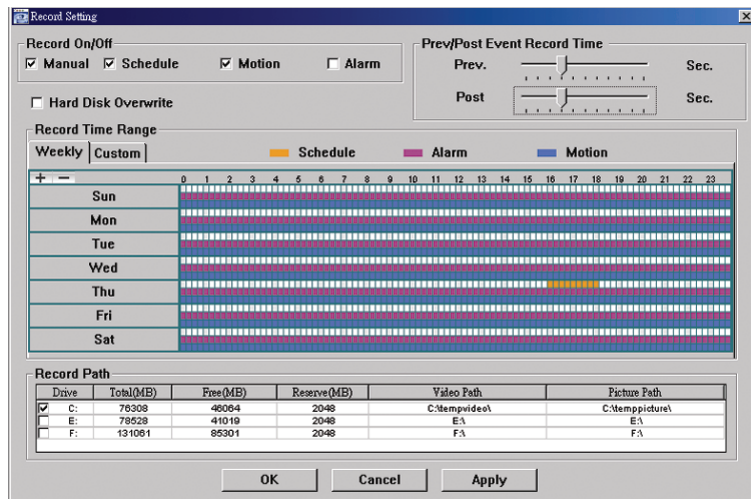
3.3.3 Main Button Overview

Button		Function	Description	
Simplified	Full Function			
		Address Book	Click to show the predefined IP address(es). You can add, remove or search the IP address to log in the DVR remotely.	
		Miscellaneous Control		Remote Config Click to go to the detailed system configuration. For details, please refer to "4. CAMERA CONFIGURATION" at page 12.
				Record Setting Click to go to the detailed record setting. For details, please refer to "3.4.1 Record" at page 6.
				Custom Setting Click to choose the language of this program, or set the password when activating this program. The changes will take effect when this program is closed and executed again.
		Log	Click to view all event and recording logs, search the desired log(s) by date, or playback the recording of the selected log.	
		Record / Record Stop	Click to start / stop the manual recording. The record button will be disabled when the reserved disk capacity set in "Record Setting" is larger than the current disk capacity. For details, please refer to "3.4.1 Record" at page 6.	
		Snapshot	Click to take a snapshot of the current view. The snapshot will be saved in the path you specified in "Record Setting".	
		Information	Click to show the current network connection details.	
		PTZ Control	Click to enter the PTZ control panel for the smart zoom function.	

3.4 Frequently-used functions

3.4.1 Record



To record remotely, click “” or “” → “” to go to the “Record Setting” page.



In the “Record Setting” page, you can set the following items:



- Record type
- Pre- / post-event record time (0~10 seconds)
- Record time setting
- Record path

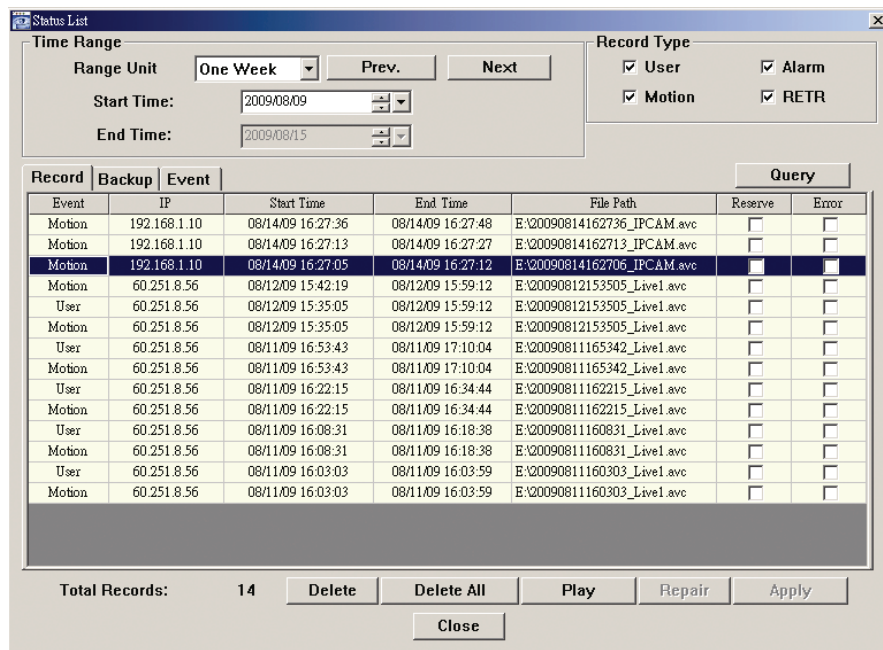
Note: The record function will be disabled when the reserved disk capacity in “Reserved(MB)” is larger than the current disk capacity in “Free(MB)”.

When “Manual” is checked, click “” or “” on the main control panel to start the manual recording immediately, and the recordings will be saved in the location specified in “Record Path”.

When “Motion” and / or “Alarm” are checked, the recording function will be enabled for any motion or alarm event, and the recordings will be saved in the location specified in “Record Path”.

3.4.2 Playback


To play a recording, click “” or “”, and select the “Record” tab. A list of all the recordings will be shown by defaults, and you can also sort out the logs you want to speed up the search time.




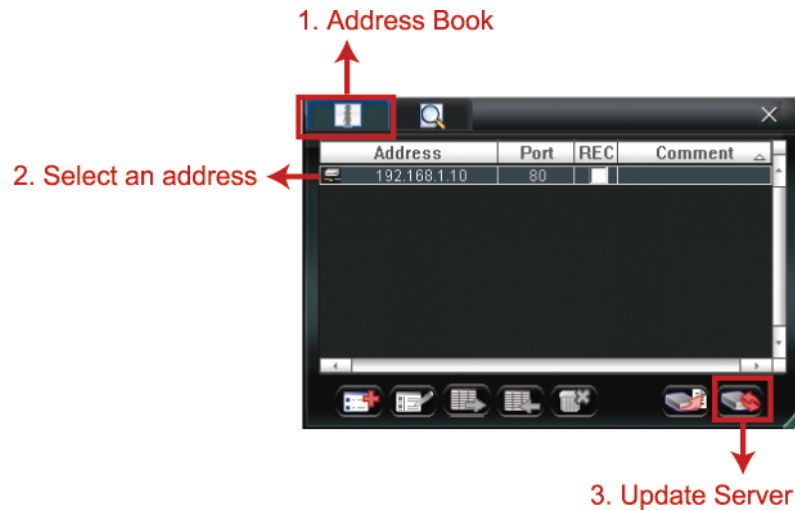
3.4.3 Firmware Upgrade

This function is used when users need to upgrade the network camera for function scalability.

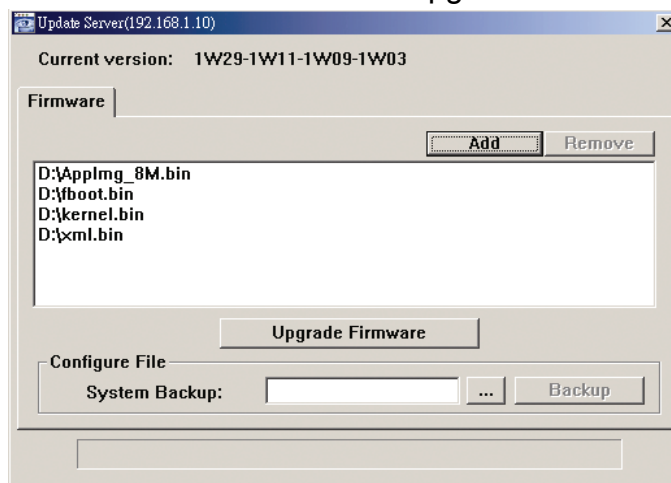
Note: Before using this function, make sure you have the correct upgrade files provided by your installer or distributor.

Step1: Click “”, and select the IP address of your network camera in the address book.

Step2: Click “” to show the upgrade page, “Update Server”.



Step3: Click “Add” to browse to the upgrade files.



Step4: Click “Upgrade Firmware” to start firmware upgrade.

Note: It takes a few minutes to finish the upgrade process. Do not disconnect the power during firmware upgrade, or the upgrade may be failed. The camera will reboot after the upgrade.

Step5: Select the IP address of the camera and click “” again to check if the firmware is upgraded.



3.4.4 E-Map

Video Viewer is also a Central Management System (CMS) software, which allows network device control & management for up to 16 devices simultaneously.

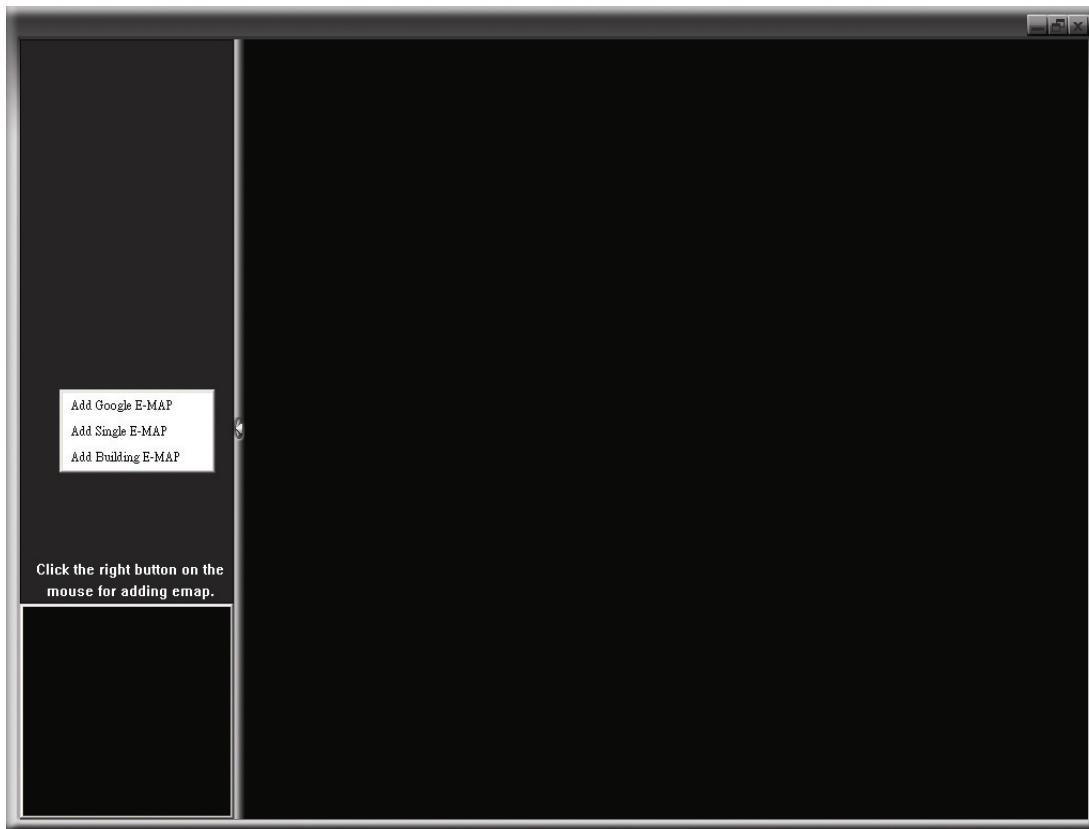
Note: Before using this function, make sure Video Viewer is connected to all the devices (up to 16) you want to monitor.

E-Map is **ONLY** available when the control panel is switch to the full function version.

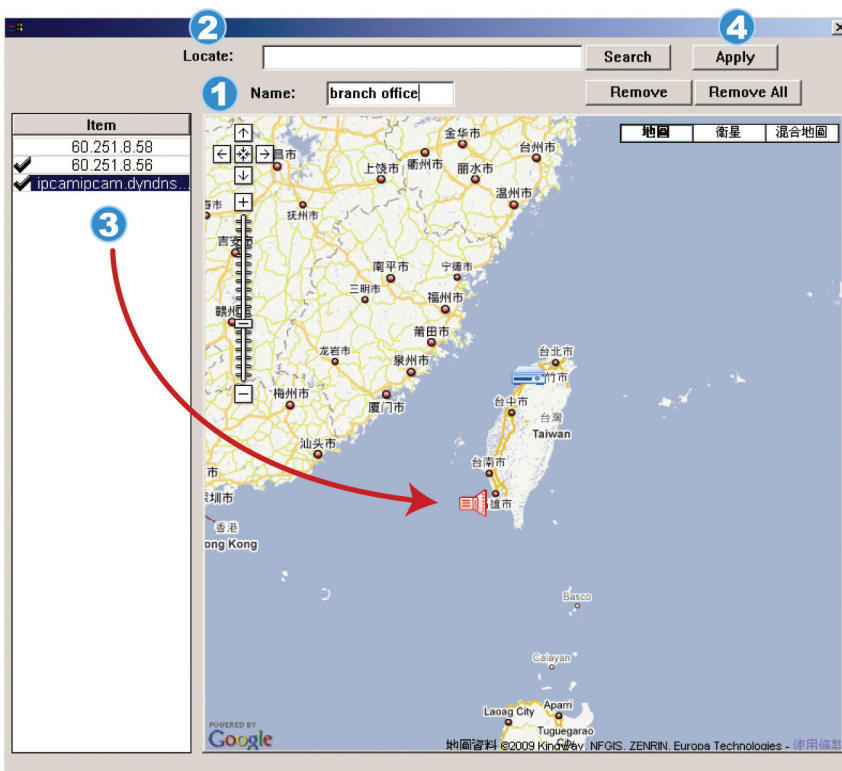
How to Add an E-Map Group

STEP1: In the simplified version, click “” to switch the control panel to the full function version, and click “” to enter the E-Map page as follows.

Note: To know where the buttons are, please refer to “3.3.1 Simplified Version (Default) at page 4, and “3.3.2 Full Function Version” at page 5.

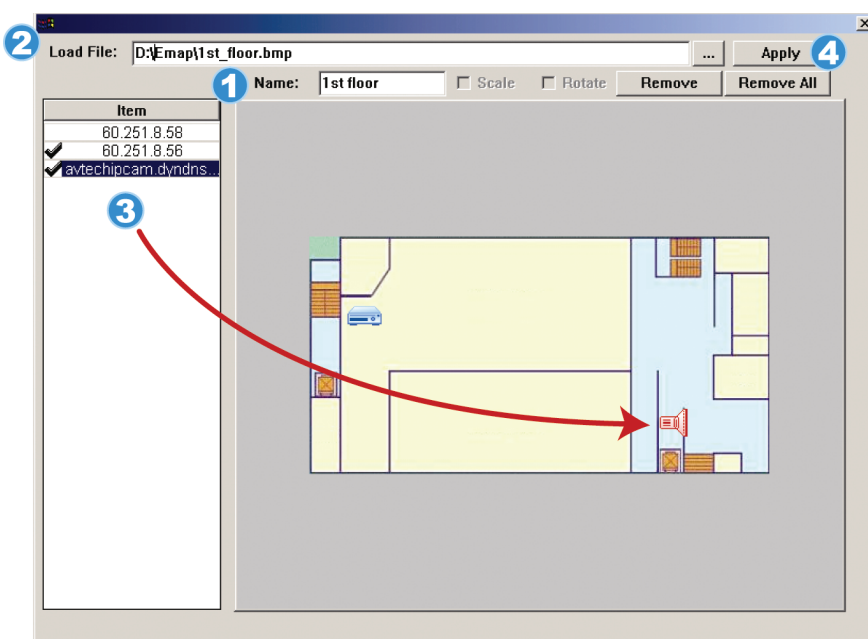


STEP2: Right-click to show the shortcut menu on the top-left panel, and select the E-Map group you want to add. There are three E-Map groups you can add: Google E-MAP, Single E-MAP, and Building E-MAP.



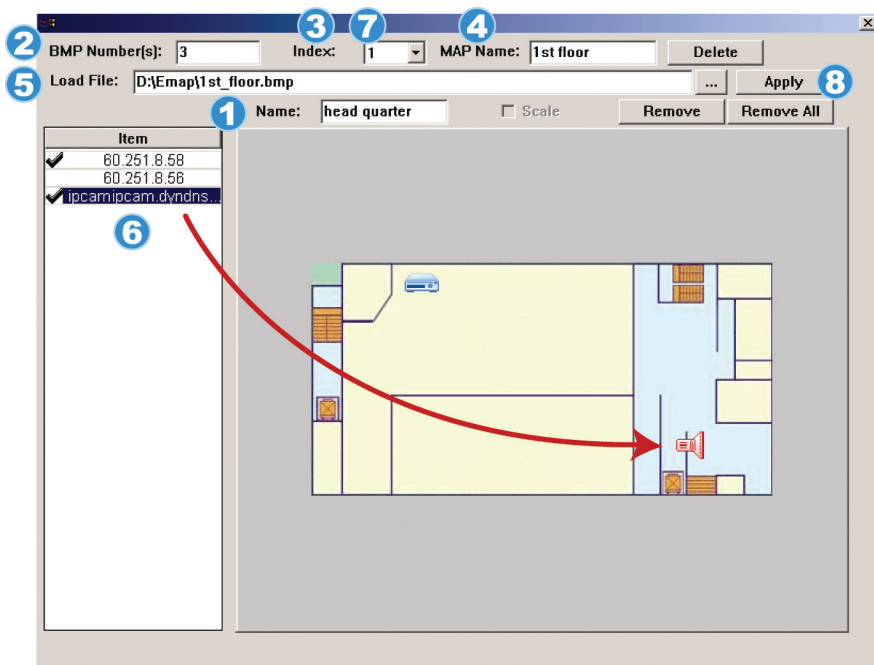
How to add a Google E-Map group:

- 1 Enter the name of this Google E-Map group.
- 2 Enter a specific address or landmark, and click "Search".
OR
Move to the map and drag to the location you want.
- 3 Click and drag the IP address to where it's located in the current level.
- 4 Click "Apply" to save and finish.



How to add a single E-Map group:

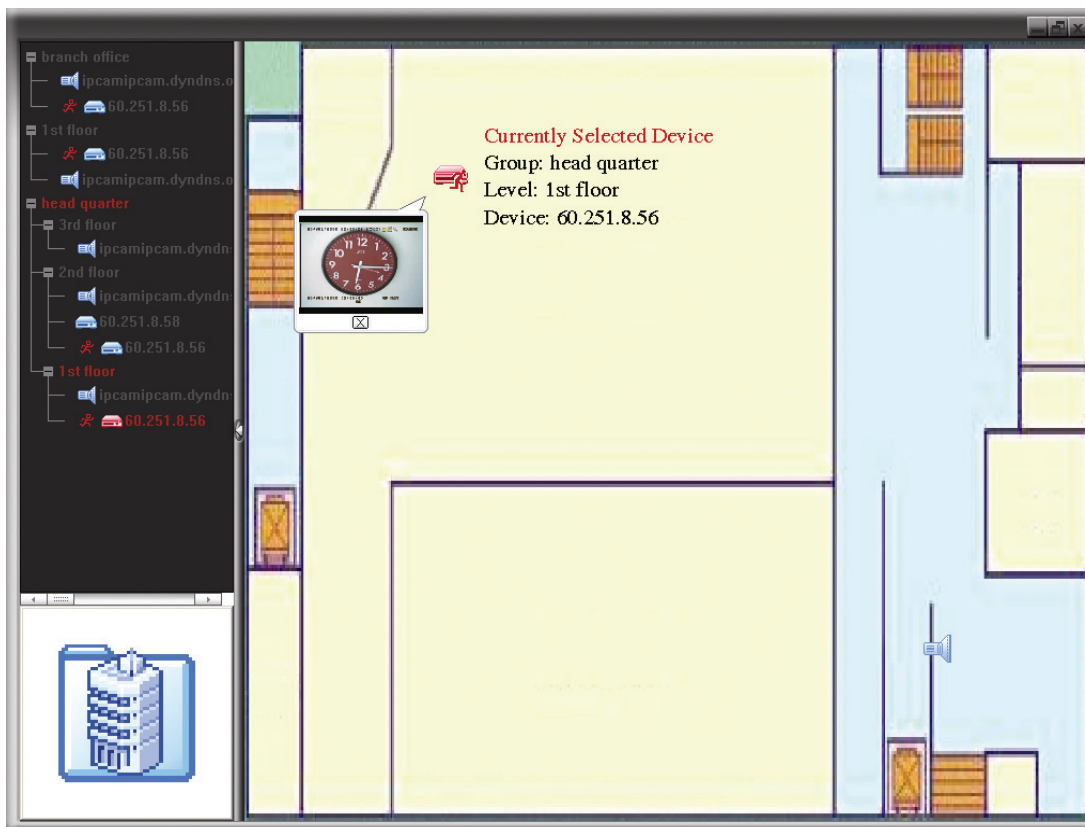
- 1 Enter the name of this single E-Map group.
- 2 Click "..." to browse the map file in BMP or JPEG.
- 3 Click and drag the IP address to where it's located in the current level.
- 4 Click "Apply" to save and finish.






How to add a building E-Map group:

- 1 Enter the name of this building E-Map group.
- 2 Enter the total levels of this building.
- 3 Select the level of the building from the drop-down list.
- 4 Enter the name of the level.
- 5 Click “...” to browse the map file in BMP or JPEG.
- 6 Click and drag the IP address to where it's located in the current level.
- 7 Go back to STEP 3 to select other level of the building, and repeat from STEP 3 to 6 until the setup for all levels are finished.
- 8 Click “Apply” to save and finish.

STEP3: When the E-Map group is created, you will see the tree on the top-left panel, showing all the devices you've added to this group.



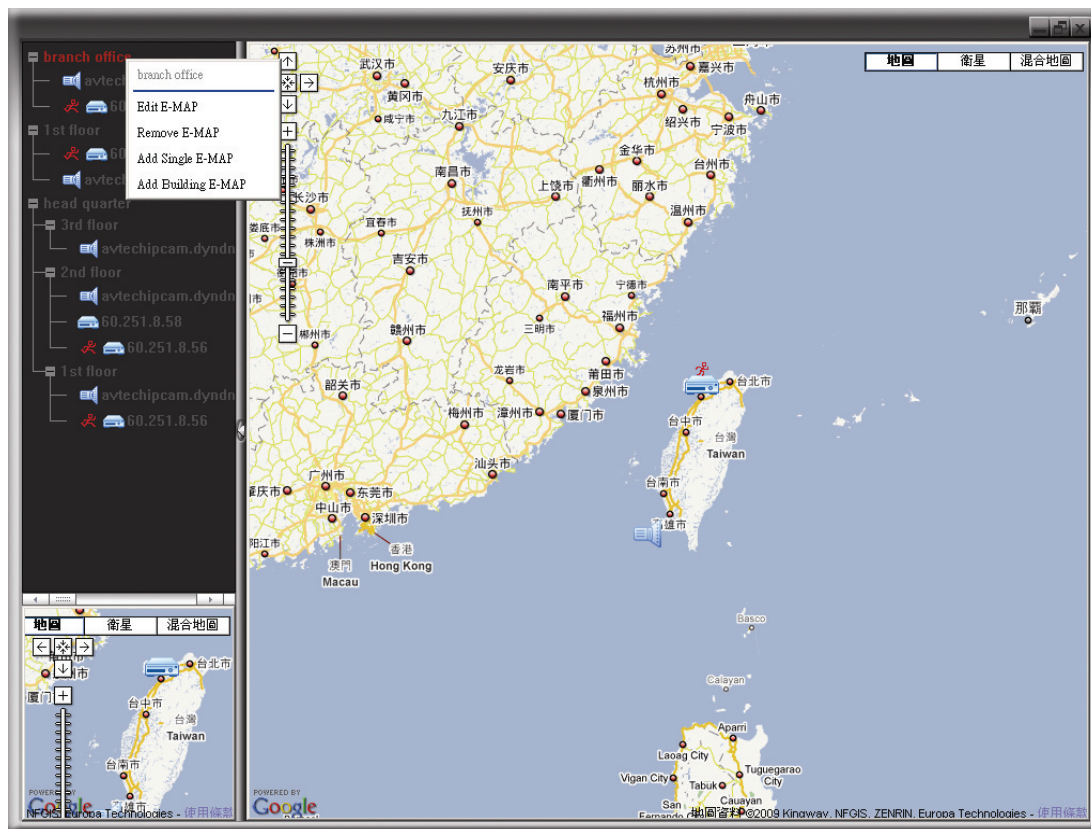
Icon	Description
	The connected device is camera. When it's selected, it will become red.
	The connected device is DVR. When it's selected, it will become red.
	For any motion or alarm event, it will appear on the screen to catch your attention. To know what's happening quickly, double-click the device icon on the E-Map to show the live view.

How to Edit / Remove an Existing E-Map Group

➤ For Google E-Map Group

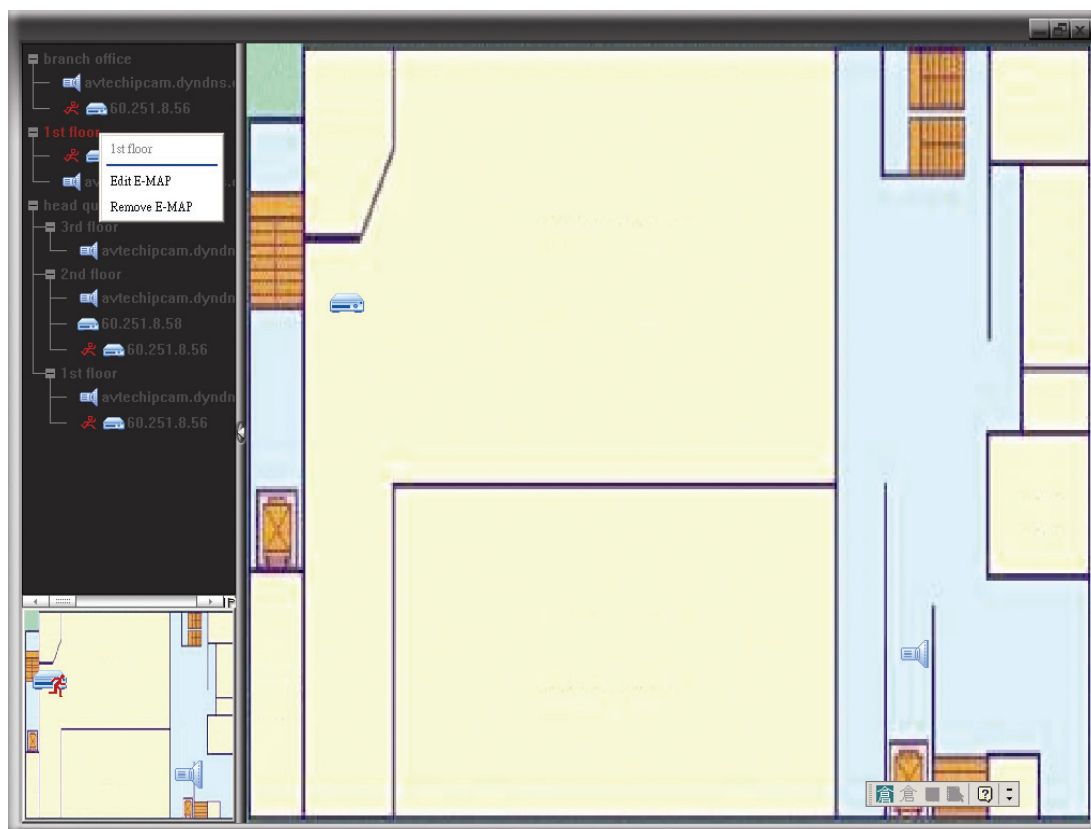
Right-click on the group name to show the shortcut menu list, and select “Edit E-MAP” or “Remove E-MAP” as needed.

You can also add a single E-Map group (Add Single E-MAP) or Building E-Map group (Add Building E-MAP) into the existing Google E-Map group.



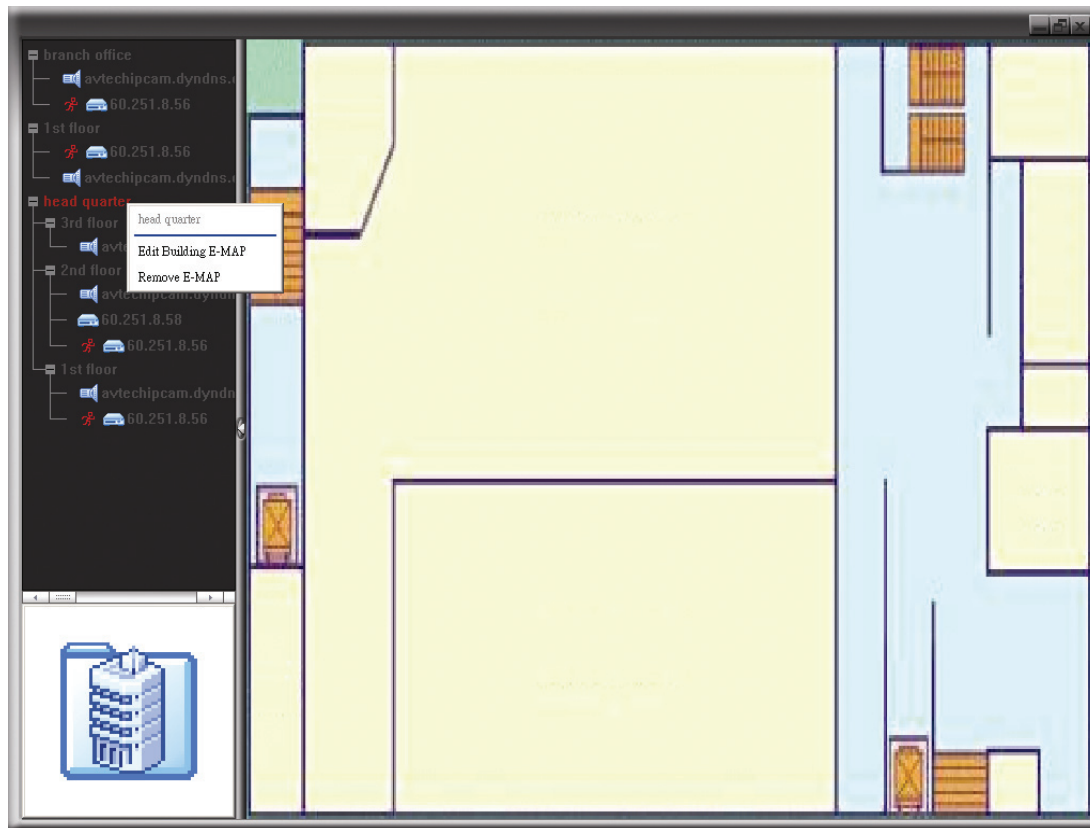
➤ For Single E-Map Group

Right-click on the group name to show the shortcut menu list, and select “Edit E-MAP” or “Remove E-MAP” as needed.



➤ For Building E-Map Group

Right-click on the group name to show the shortcut menu list, and select “Edit Building E-MAP” or “Remove E-MAP” as needed.



4. CAMERA CONFIGURATIONS VIA WEB BROWSER

Users can also access the network camera via a web browser, such as Microsoft Internet Explorer, Mozilla Firefox or Google Chrome.

Note: It's recommended to consult with your installer before changing system configurations.

Note: You need to be the supervisor to enter the system configuration page. If not, please re-log into the camera with the supervisor user level.

However, the web browser is only available for single device access. If users want to access more than two devices through one interface, it's recommended to use our supplied CMS software, Video Viewer. For details, please refer to "3. ACCESSING THE CAMERA VIA VIDEO VIEWER" at page 3.

Before using the network camera, make sure you have configured the network settings and have the IP address, user name and password used for accessing the camera in hand. If not, please refer to the installation guide.

4.1 Accessing the camera

Step1: Open your web browser, and key in <http://ipaddress:portnum> in the URL address box.

For example, for IP address 60.121.46.236 and port No. 888, please key in "<http://60.121.46.236:888>" into the URL address box, and press "Enter".

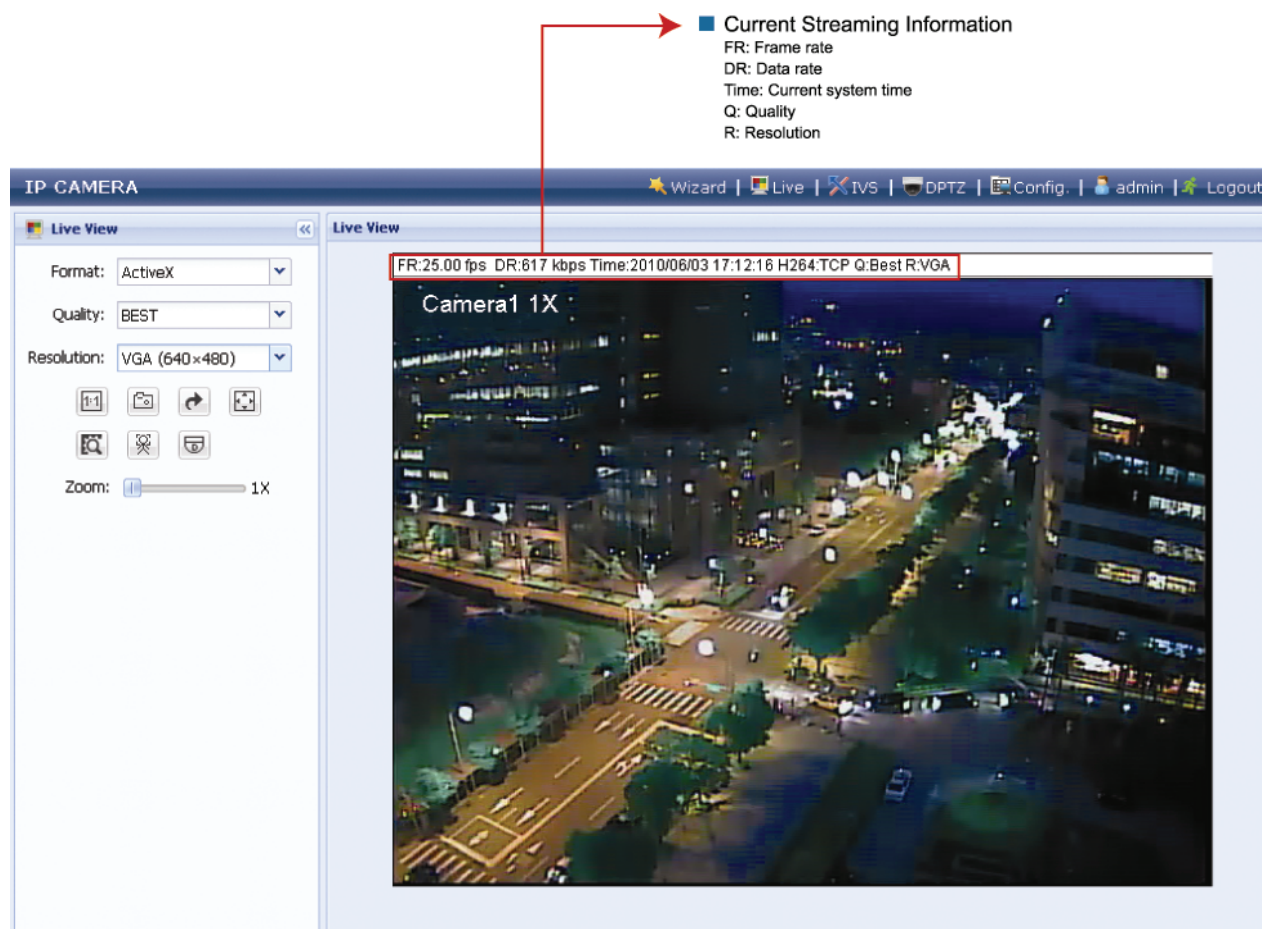
Step2: In the login page, key in the user name and password, and enter the security code from the image below if any. Then, click "LOGIN".

Step3: The wizard is then started.

- To skip the wizard and directly access the camera live view, click "Close".
- To directly access the camera live view without starting the wizard for the login next time, check "Do not start wizard at login".

Step4: When the login is successful, the live view is shown.

4.2 Control panel overview



Function	Icon	User Level	Description
Configuration Page:		Supervisor / Power User	
Live			Switch to the live view page.
IVS			Switch to the IVS configuration page. The IVS functions include Flow Counting, Virtual Fence, One Way Pass, and Face Tracking. For details, please refer to "4.3 IVS configurations" at page 14.
DPTZ			Switch to the DPTZ configuration page. For details, please refer to "4.4 Digital PTZ (DPTZ) operations" at page 16.
Config.			Switch to the system configuration page. For details, please refer to "4.5 System configuration menu" at page 17.
Format	--	Supervisor / Power User / Normal User / Guest	Select the web transmission format from the drop-down list: <ul style="list-style-type: none"> ■ ActiveX ■ QuickTime For users using Mozilla Firefox or Google Chrome, only "QuickTime" is selectable. QuickTime is Apple Inc.'s multimedia software. You need to have QuickTime installed in your operating system before selecting "QuickTime". When it is selected, you will be promoted to enter the user name and password to access the camera.
Quality	--	Supervisor / Power User / Normal User	Click & drag the slider to select the video quality: BASIC / NORMAL / HIGH / BEST.
Resolution	--	Supervisor / Power User / Normal User	Select the image resolution from the drop list: <ul style="list-style-type: none"> ■ SXGA (1280 x 1024) ■ SXVGA (1280 x 960) ■ 720P (1280 x 720) ■ VGA (640 x 480) ■ QVGA (320 x 240)
Live View Size:		Supervisor / Power User / Normal	
Normal Size			The current live view size is the same as the selected resolution.
Fit to screen			Resize the selected resolution to fit into the live view size. <i>This icon appears only when the selected resolution is larger than the current live view size.</i>
Scale			Click and hold the movable square on the left bottom corner of the live view to move <i>This icon appears only when the selected resolution is larger than the current live view size.</i>
CIF Resize			Resize the QVGA resolution to fit into the live view size. <i>This icon appears only when the selected resolution is QVGA (CIF) than the current live view size.</i>
Snapshot		Supervisor / Power User /	Click to take a snapshot of the current view, and save to the location

Function	Icon	User Level	Description
		Normal User	specified in "Config." → "Camera" → "Camera" → "Snapshot Path".
Flip		Supervisor / Power User / Normal User	Click to rotate the image 180° counterclockwise when necessary.
Full Screen		Supervisor / Power User / Normal User	Click to display the image in full screen. To exit the full screen mode, press "Esc" on your keyboard.
Digital Smart Zoom		Supervisor / Power User	Click to activate the smart zoom function.
Face Tracking**		Supervisor / Power User	Click to enable the face tracking function.
DPTZ**		Supervisor / Power User	Click to enable digital PTZ functions.

** Face Tracking, Flow Counting, DPTZ & Smart Zoom can't be activated simultaneously.

4.3 IVS configurations

IVS related functions are grouped into two categories, and they are not allowed to be activated at the same time:

- Intelligent Video System (Flow Counting / Virtual Fence / One Way Pass)
- Face Tracking

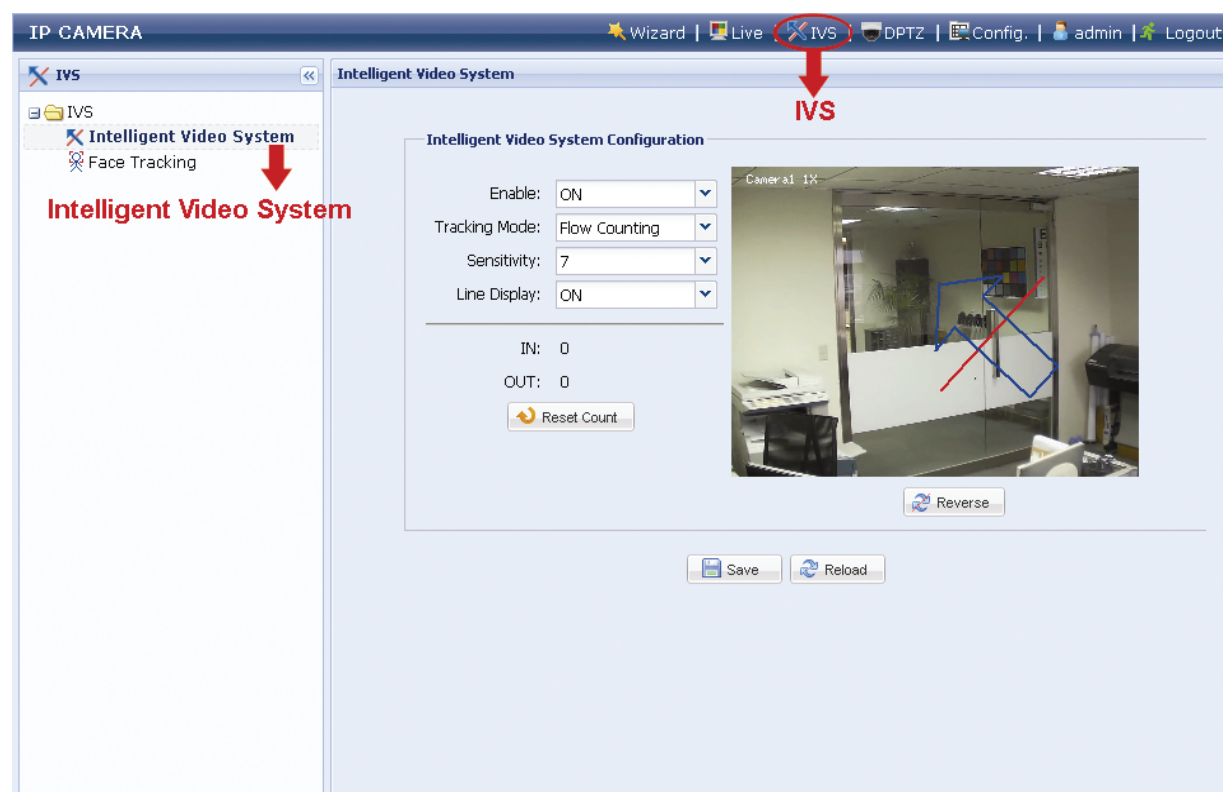
Note: This function is available only for Megapixel models.

Note: This function is not available when the stream format is selected as MJPEG.

4.3.1 Intelligent Video System

Note: When this function is enabled, DPTZ, Face Tracking, Smart Zoom, and optical zoom are not allowed to use.

Intelligent Video System allows you to choose from Flow Counting, Virtual Fence or One-Way Pass based on your installation environment.



STEP1: Click "IVS" to enter the IVS system configuration page, and select "Intelligent Video System".

STEP2: Select and set the IVS system as described below:

ITEM	DESCRIPTION
Enable	Select "ON" to enable or "OFF" to disable the selected function in "Tracking Mode".
Tracking Mode	Select "Flow Counting", "Virtual Fence" or "One Way Pass" from the drop-down list.
Reverse	Draw a detection line directly on the live view preview area above "Reverse", and click it to decide the detection orientation based on your selection in "Tracking Mode". ----- <ul style="list-style-type: none"> ■ For Flow Counting: <ul style="list-style-type: none"> IN: People coming from the opposite direction to the arrow mark. OUT: People coming from the same direction as the arrow mark.

ITEM	DESCRIPTION
	<ul style="list-style-type: none"> ■ For Virtual Fence: An event happens for anyone walking across the detection line.
	<ul style="list-style-type: none"> ■ For One Way Pass: An event happens for anyone walking from the opposite direction to the arrow mark.
Sensitivity	Set the sensitivity for IVS from 00 ~ 15. The larger the value, the more sensitive the IVS will be.
Line Display	Select to display (ON) or hide "OFF) the detection line for IVS on the live view or not.
Reset Count	Reset the flow counting number to 0 when the tracking mode is set to "FLOW COUNTING" and activated.

STEP3: When all the configurations are done, click "Save" to save your changes, and click "Live" on the top to return to the live view.

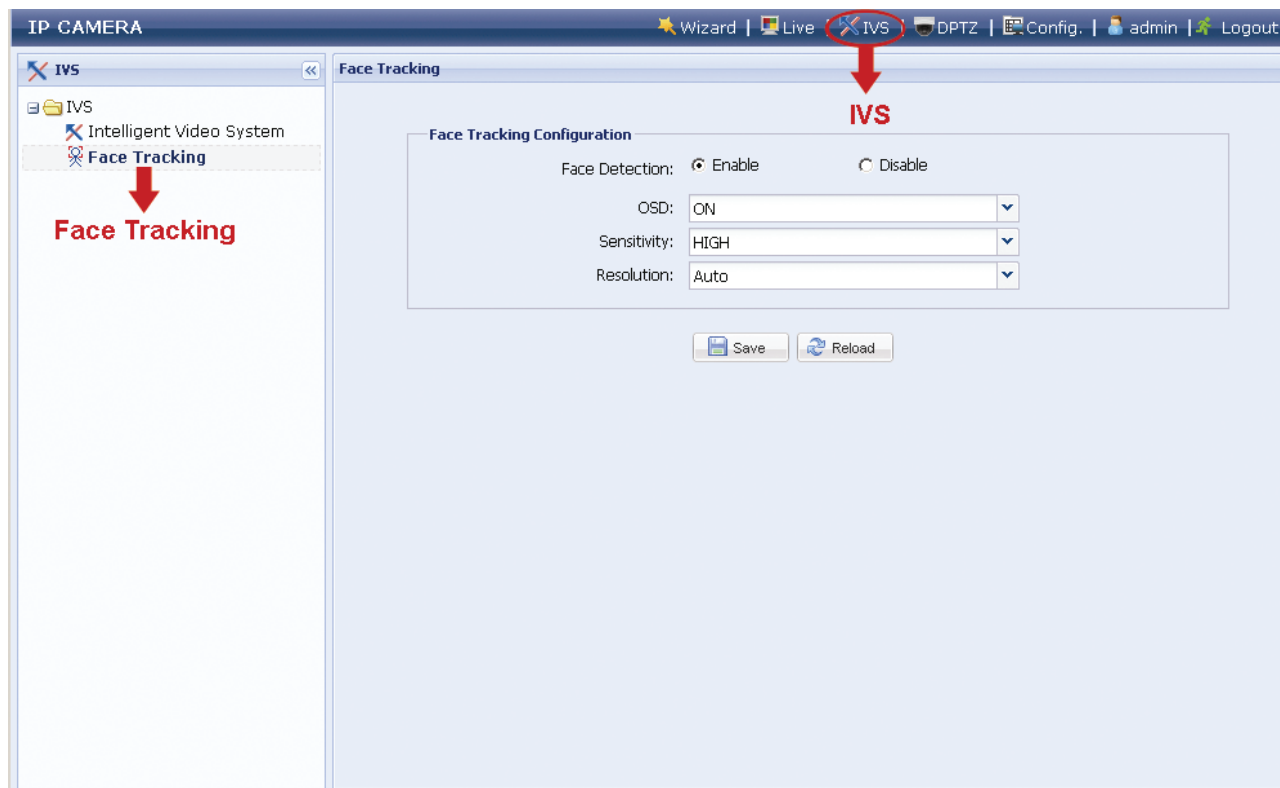
When "Flow Counting" is selected and enabled, you will see the flow-counting panel as shown below on the left panel of the live view.



4.3.2 Face Tracking

Note: When this function is enabled, DPTZ, Intelligent Video System, Smart Zoom, and optical zoom are not allowed to use.

Face Tracking is used to especially zoom in on the intruder's face, easy for everyone to identify.



STEP1: Click "IVS" to enter the IVS system configuration page, and select "Face Tracking".

STEP2: Select and set Face Tracking as described below:

ITEM	DESCRIPTION
Face Detection	Select "Enable" to activate or "Disable" to deactivate this function.
OSD	Select "ON" to display the following status messages on the live view: FACE STANDBY: This function is activated and ready to use. FACE TRACKING: This function is tracking. FACE ZOOM IN / OUT: This function is zooming on the face for tracking / zooming out when the tracking object leaves the surveillance area.
Sensitivity	Set the tracking sensitivity from HIGH / MEDIUM / LOW.
Resolution	Set the resolution for face tracking from Auto / VGA / QVGA.

STEP3: When all the configurations are done, click "Save" to save your changes, and click "Live" on the top to return to the live view.

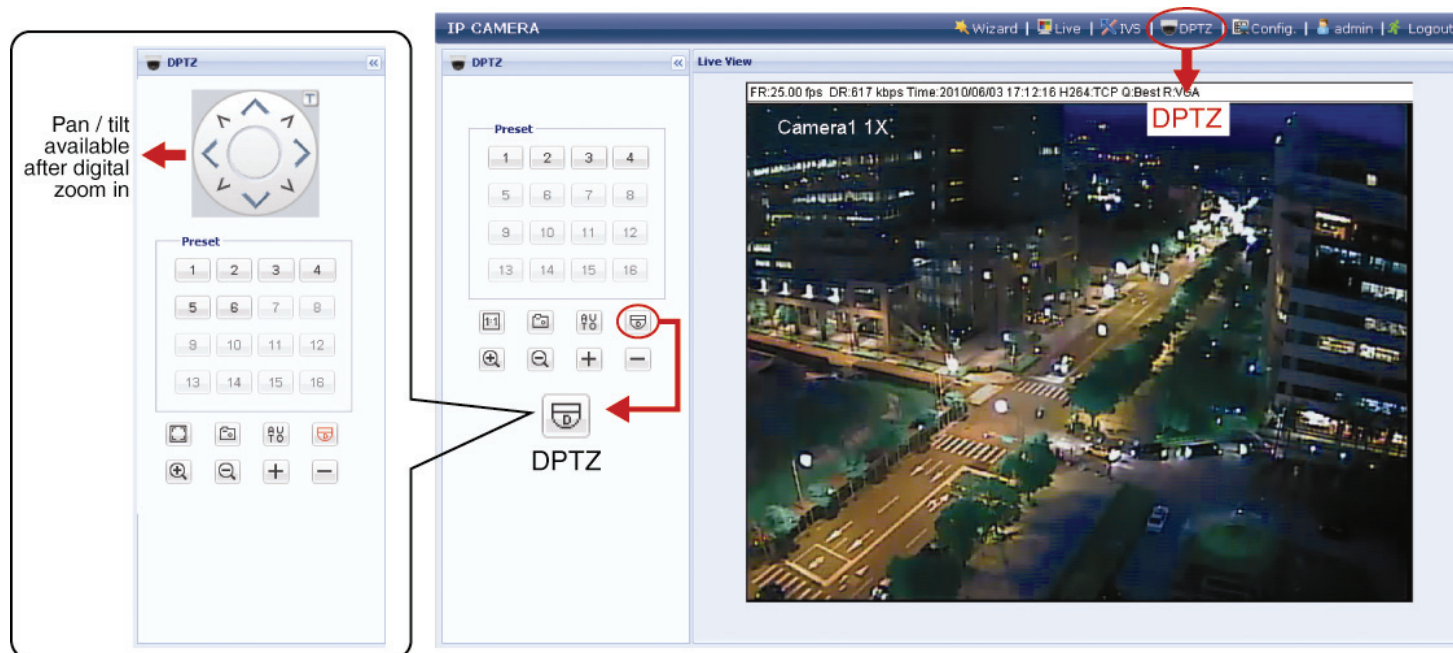
4.4 Digital PTZ (DPTZ) operations

This fixed network camera type has PTZ capability, i.e. digital PTZ (hereafter called “DPTZ”), for wide area monitoring.

Note: This function is available only for Megapixel models.

Note: When this function is enabled, Intelligent Video System, DPTZ, Face Tracking, Smart Zoom, and optical zoom are not allowed to use.

STEP1: Click “DPTZ” to show the DPTZ control panel.



STEP2: Select the functions when needed:

ICON	FUNCTION	DESCRIPTION
	Fit to screen / Restore to original size	<p>There are several monitor resolutions available. When the selected resolution is out of your current live view support, a part of your surveillance area might get covered on the screen, and you need to manually move on the screen to check the covered part.</p> <p>: This is used to scale the selected resolution to fit in the current live view size.</p> <p>: This is used to restore the scaled live view resolution to its original size.</p>
	Take snapshots	Click to take a snapshot of the current view, and save to the location specified in “Config.” → “Camera” → “Camera” → “Snapshot Path”.
	Enable Auto mode	<p>Click to activate the auto mode of the camera. The auto mode could be “Sequence” or “Auto Pan” specified in “Config.” → “Camera” → “Cruise” → “Active Mode”.</p> <p>Note: This function is available only when DPTZ is enabled.</p> <p>Sequence: Move to several preset points accordingly and regularly specified in “Config.” → “Camera” → “Cruise” → “Active Mode” → “Sequence”.</p> <p>Note: Preset points are set in “Config.” → “Camera” → “Preset”.</p> <p>Auto Pan: Pan automatically and horizontally.</p>
	Enable DPTZ	<p>Click to activate the digital PTZ function. When this function is enabled, the following operations are available:</p> <ul style="list-style-type: none"> Auto mode Move up / down / left / right after digital zoom-in.

4.5 System configuration menu

Click “Configuration” or “Config.” to enter the configuration page.

Note: You need to be the supervisor to enter the system configuration page. If not, please re-log into the camera with the supervisor user level.

The functions are categorized into three menus: Network, Camera and General.

- For details about “Network”, please refer to “4.6 Network” at page 18.
- For details about “Camera”, please refer to “
- 4.7 Camera” at page 20.
- For details about “General”, please refer to “4.8 General” at page 23.

Main Menu	Sub-Menu	Reference
Network	Network	Configure network settings.
	DDNS	Enter DDNS information when the network type is PPPOE or DHCP.
	SNTP	Synchronize your camera time with the networked computer systems.
	FTP	Enter the FTP information for event notifications when “FTP” is chosen in “General” → “Trigger”.
	Mail	Enter Email information for event notifications when “Email” is chosen in “General” → “Trigger”.
	Filter	Choose to permit or block the IP address(es) which can access this camera.
Camera	Camera	<ol style="list-style-type: none"> 1. Set the camera title. 2. Specify the snapshot path. 3. Select the streaming settings based on your network environment.
	Preset	Set the preset points for the DPTZ function.
	Cruise	Set the cruise mode when the auto mode is enabled: Sequence or Auto Pan.
	Color	Adjust the color performance.
	Time	Set daylight saving time and the current time.
	Digital Smart Zoom	Set the sensitivity and standby interval.
General	General	<ol style="list-style-type: none"> 1. Select the language of the web browser. 2. Check the MAC address of the camera.
	Server Log	Check the system event logs.
	Online	Check the current online user(s).
	Account	<ol style="list-style-type: none"> 1. Create a new user account with different access privilege. 2. Modify or delete an existing user account.
	Trigger	<ol style="list-style-type: none"> 1. Enable / disable the motion detection. 2. Set the motion detection area. 3. Select the event notification method.
	Configure	Check the current firmware version.

4.6 Network

4.6.1 Network

You can set the network configuration of the network camera depending on your network type. For details, please refer to your installation guide.

4.6.2 DDNS

Select “On” when the selected network type in “Network” is “PPPOE” or “DHCP”. For details, please refer to the installation guide.

4.6.3 SNTP

SNTP (Simple Network Time Protocol) is used to synchronize your camera time with the networked computer systems.

Function	Description
GMT	Once users choose the time zone, the network camera will adjust the local area time of the system automatically.
NTP Server	Simply use the default SNTP server (For example, tock.stdtime.gov.tw) or change to another server with which users are familiar.
Sync. Period	Select “Daily” to synchronize the camera time with the network time every day or “None” to turn off this function.
Server Time	Click and the network camera will synchronize the time with the network time.

4.6.4 FTP

Enter the detailed FTP information and click “Save” to confirm. The information you set here will be applied when “FTP” is selected in “General” → “Trigger”.

FTP Configuration

Username:

Password:

Server:

Port:

Directory:

4.6.5 MAIL

Enter the detailed e-mail information and click “Save” to confirm. The information you set here will be applied when “Email” is selected in “General” → “Trigger”.

SMTP Configuration

SMTP Server:

Mail From:

Verify Password: Yes No

Username:

Password:

E-Mail Address:

Receiver Name	E-Mail Address
manager	manager@tech.com

Function	Description
SMTP Server	Enter the SMTP server address provided from your e-mail system supplier.
Port*	Enter the port number provided from your e-mail system supplier. If this column is left blank, the e-mail server will use port 25 to send e-mails.
Mail From	Enter the entire mail address to ensure e-mails will not be blocked by SMTP.
SSL Encryption*	Select “Yes” if your e-mail server is using SSL encryption to protect your e-mail content from unauthorized access.
Verify Password	Some mail servers are required to verify the password. Please enter the “user name” and “password”.
E-Mail Address List	Add the e-mail address(s) of the assigned recipient(s).
Test Mail*	When all information is entered, click “Test Mail” to try if the recipe.

4.6.6 Filter

Choose to permit or block the IP address(es) which can access this camera, and click “Save” to confirm.

Filter

Filter Configuration

Error Count:

Error Lock Time: Minute(s)

Echo Request: Non-Block Block

IP/MAC Filter Configuration

IP/MAC Filter: Enable Disable

IP/MAC Filter Policy: Allow Deny

IP/MAC Filter Rules

Rule :

Function	Description
■ Filter Configuration	

Function	Description
Error Count	Set the maximum count for login failure. When the maximum count is reached, the IP address trying to access the network camera will be locked.
Error Lock Time	Set the lock time in minutes when the maximum count of error login for an IP address is reached.
Echo Request	Select "Non-Block" to allow other users to use the ping command to detect the IP address of your network camera, or "Block" to deny the ping command request.
■ IP/MAC Filter Configuration	
IP/MAC Filter	Choose to enable or disable the filter function.
IP/MAC Filter Policy	If "Enable" is selected, choose whether you want to permit (Allow) or block (Deny) the IP address list below.
■ IP/MAC Filter Rules	
Rule	<ul style="list-style-type: none"> To add an item to the IP address list, key in the IP address in "Rule", and click "Add". To remove an existing item in the IP address list, click the item you want to remove, and click "Delete".

4.7 Camera

4.7.1 System

Set the camera OSD display.

Function	Description
Display	<p>Select "CAMERA" to display the camera title you set in "Title" here.</p> <p>Select "SMART ZOOM" to display the current status of Smart Zoom when this function is activated.</p> <p>Select "ALL" to display the camera title and smart zoom status.</p> <p>Select "OFF" to disable this function.</p>
Title	Enter the title for the camera with up to 15 alphameric characters.
Position	Set the position where the OSD will be shown: U-L (top-left) / U-R (top-right) / D-L (bottom-left) / D-R (bottom-right).

4.7.2 Camera

Adjust the camera parameters if necessary.

Item	Description
Title	Enter the title for the camera with up to 15 alphameric characters.
Snapshot Path	Specify the location to save the snapshot pictures.
Environment	Select the current environment for the camera to automatically adjust itself to produce the images suitable for the selected environment.

Item	Description
Frame Rate	The frame rate allowed to each viewer can be adjusted to adapt to the bandwidth on the network. Set the desired image frequency to the maximum (FULL) or to a specified frame rate (1/2; 1/3; 1/4; 1/5; 1/10; 1/15). The actual frame rate depends on the actual network connection, and may be lower than the specified one.
System Type	It shows the current system type: NTSC or PAL.
Stream Format	Select the streaming format to H.264 / MPEG-4 / Motion JPEG.
ADSL Upload Speed	Select your Internet upload speed, and the system will automatically adjust your data flow. The options are: Local (>2Mbps) / 2M (2000Kbps) / 1M (1000Kbps) / 640Kbps / 512 Kbps / 256Kbps / 128 Kbps / 64Kbps
IR Control	Select "AUTO" to automatically enable IR LEDs based on the current light condition, or "OFF" to disable this function.
OSD	Select "ON" to show the camera title on the live view, or "OFF" to hide the camera title.
Maximum Exposure Limits	This function is used to extend the exposure time for clearer images when the light is not sufficient. Select 1 ~ 5 to extend the exposure time based on your current light condition. The larger the value, the longer the exposure time, and the less the fps. 0 means function off.

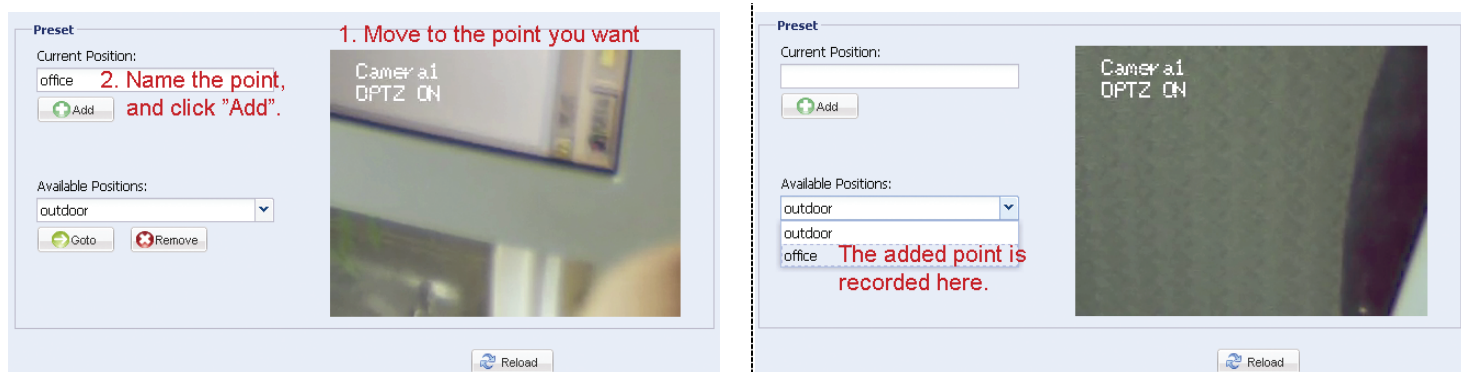
4.7.3 Preset

You can set new preset points (up to 16) or check existing points here.

How to set a new preset point

Step1: Click to move to the point you want on the live view panel on the right side.

Step2: In "Current Position", give a name to this point, and click "Add".



How to check an existing preset point

In "Available Positions", select the name of the point you want to check from the drop-down list, and click "Goto".

You will see the camera view on the right side moving to the point it's recorded.

How to delete an existing preset point

In "Available Positions", select the name of the point you want to check from the drop-down list, and click "Remove".

4.7.4 Cruise


Here defines how the auto mode of the camera is going to work when **AUTO** is selected: Sequence or Auto Pan.

Auto Pan

When "Auto Pan" is selected here and **AUTO** is clicked on the live view page, the camera will start panning.

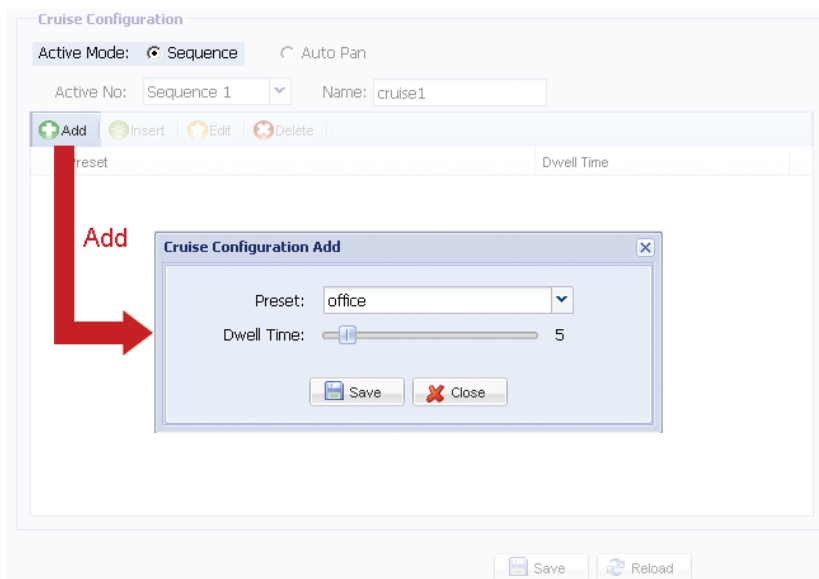


Sequence

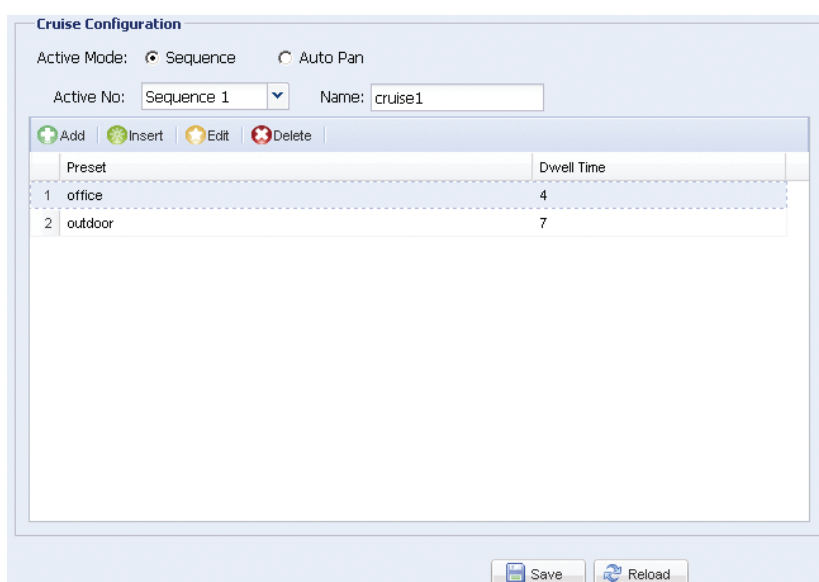
When “Sequence” is selected here and  is clicked on the live view page, the camera will start patrolling each preset point defined in “Sequence”.

Step1: Click “Add” to choose a preset point from the drop-down list, and select the duration to stay at this point from 1 ~ 60 minutes.

Then, click “Save” to confirm.



Step2: Click “Add” again to add more preset points. When all the points are added, click “Save” to confirm.



4.7.5 Color

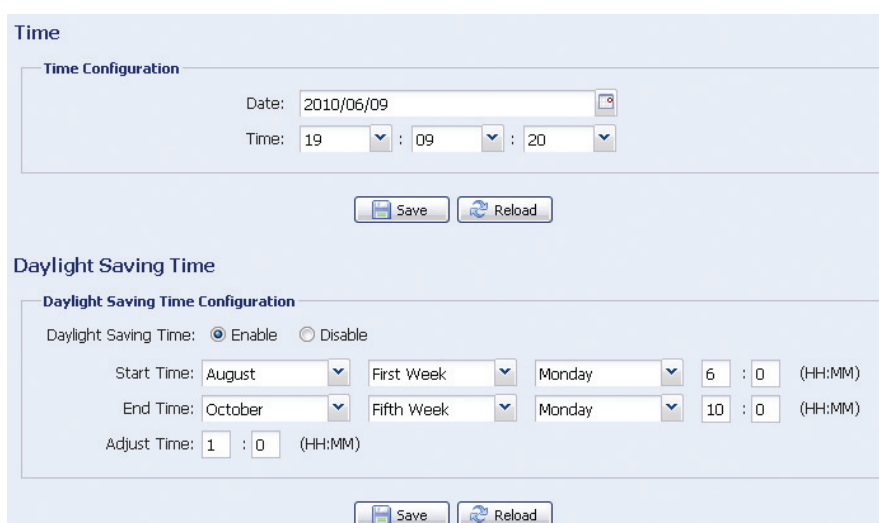
Adjust the color performance from Brightness, Contract, Hue and Saturation. Click and drag the slider to preview the color change on the right side of this page and adjust the image color.

To restore the default values, click “Back to Default”.



4.7.6 Time

Set daylight saving time and the current time, and click “Save” to confirm.

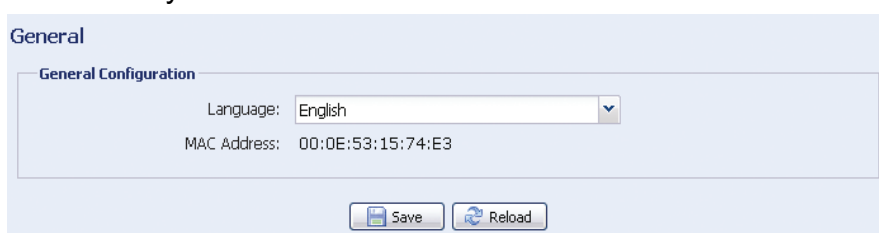


Function	Description
■ Time Configuration	
Date	Set the current date.
Time	Set the current time.
■ Daylight Saving Time Configuration	
Daylight Saving Time	Specify whether to use daylight saving time (Enable / Disable).
	If this function is enabled, set the time period (Start Time / End Time), and adjust the daylight saving time in hours (Adjust Time).

4.8 General

4.8.1 General

In “General”, you can select the UI language to English or Chinese, and check the MAC address of your camera.



4.8.2 Server Log

To quickly search the system logs you want by event type, click “Prev. Page” or “Next Page” to find the logs you want, or check the event type(s) and click “Reload” to start searching.

To clear all system event logs, click “Clear All”.

No.	Event	Time	Result
1	Remote Login	2010/06/09 23:35:04	admin
2	Remote Login	2010/06/09 23:33:03	admin
3	Remote Login	2010/06/09 23:31:56	admin
4	Remote Login	2010/06/09 23:28:01	admin
5	Remote Login	2010/06/09 23:24:57	admin
6	Remote Login	2010/06/09 23:24:11	admin
7	Remote Login	2010/06/09 23:22:19	admin
8	Remote Login	2010/06/09 23:22:16	admin
9	Remote Login	2010/06/09 23:21:59	admin
10	Remote Login	2010/06/09 23:21:57	admin
11	Remote Login	2010/06/09 23:21:51	admin
12	Remote Login	2010/06/09 23:21:48	admin

4.8.3 Online

You can check the current online user(s) with respective online information. To refresh the list, click "Reload".

To allow anonymous login, check "Enable".

Online Configuration

Anonymous Viewer Login: Enable Disable

Max Online User: 10

Username	IP Address	User Level	Media Type
admin	211.75.84.96	SUPERVISOR	H.264
admin	114.32.58.99	SUPERVISOR	H264

Reload

Save Reload

4.8.4 Account

You can create a new account with different user access privilege, or delete or modify an existing account setting.

How to create a new account

Step1: Click "New", and fill in the following columns.

Account

Username	User Level	Life Time
admin	SUPERVISOR	INFINITE
guest	SUPERVISOR	5 MIN

New Account Info

Username:

Password:

Confirm Password:

User Level:

Life Time:

Save Close

Add Edit Delete

Column	Description
User Name	Set a user name that will be used for camera access. The user name allows up to 16 alphanumeric characters.
Password	Set the password that will be used for remote login. The password allows up to 16 alphanumeric characters.

Column	Description
Confirm Password	Enter the password again to confirm.
User Level	Set the security level of an account to give the permission to control different functions. There are four user levels: SUPERVISOR, POWER USER, NORMAL USER and GUEST.
Life Time	Select how long this account is allowed to stay online (1 MIN / 5 MIN / 10 MIN / 1 HOUR / 1 DAY / INFINITE)

Step2: Then, click “Save” to save your setting and create a new account.

How to modify or delete an existing account

Step1: Select the account you want to modify or delete.

Step2: To modify the account, click “Edit” to change the settings, and click “Save”.

To remove the account, click “Delete”.

Note: It's not allowed to remove an account when there's only one account in the account list.

4.8.5 Trigger

You can set the motion or alarm detection and select the notification function.

◆ Trigger Setting

In this section, you can select to enable or disable the alarm or motion detection.

Item	Description
Motion	<p>Select to enable or disable the motion detection function.</p> <ul style="list-style-type: none"> • Motion Detection Area Setting <p>When “Enable” is selected, click “Detection” to enter the motion detection area setting page as follows:</p> <p>Level of Sensitivity: Set the detection sensitivity from 0 ~ 9 (For Model 1 & 2 only), or High / Normal / Low (For Model 3 only).</p> <p>Area Setting: Set the motion detection area by selecting the area grids with your mouse. Pink grids represent the area that is not being detected while the transparent grids are the area under detection. You can set multiple areas under detection. Click “Clear All” to set the whole area undetected. Click “Select All” to set the whole area under detection.</p>
Trigger Duration	Set the duration time for trigger recording (5 / 10 / 20 / 40 seconds).

◆ Notification Setting

In this section, you can select to enable e-mail and/or FTP notification when an alarm or a motion happened.


Item	Description
------	-------------

Method	<input type="checkbox"/> Email When this option is checked, the network camera will upload the captured video clip to the assigned e-mail address(s) once motion or alarm recording happened. <input type="checkbox"/> FTP When this option is checked, the network camera will upload the captured video clip to the specified FTP site once motion or alarm recording happened.
Media Type*	Select the file type of the notification files: H264 (video) / MPEG4 (video) / JPEG (image).
Record Time	Set the record time of the notification video clip (1 ~ 5 seconds).

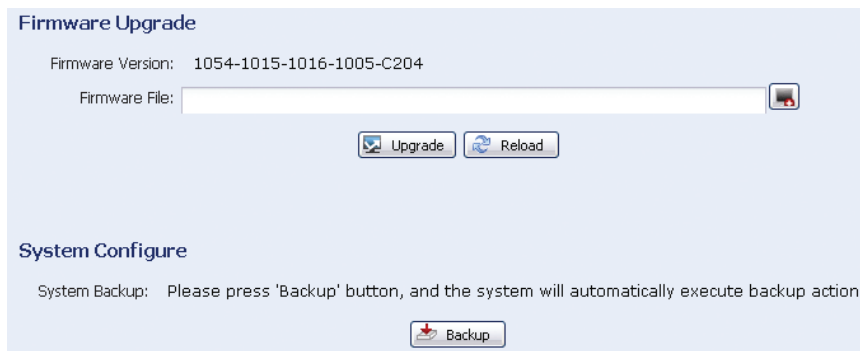
4.8.6 Upgrade / Configure

This function is used when users need to upgrade the network camera for function scalability.

Note: Before using this function, make sure you have the correct upgrade files provided by your installer or distributor.

Step1: Click “” to browse to where you save the upgrade files, and select one of the files to upgrade.

Note: It’s not allowed to upgrade many files at a time. Please upgrade one by one.



Step2: Click “Upgrade” to start system upgrading.

Note: It takes a few minutes to finish the upgrade process. Do not disconnect the power during firmware upgrade, or the upgrade may be failed. The camera will reboot after the upgrade.

APPENDIX 1 PRODUCT SPECIFICATIONS

■ 1.3 Megapixel IR Network Camera Series

Network	
Network Compression	H.264 / MPEG4 / MJPEG
LAN Port	YES
LAN Speed	10/100 Based-T Ethernet
Supported Protocols	DDNS, PPPoE, DHCP, NTP, SNTP, TCP/IP, ICMP, SMTP, FTP, HTTP, RTP, RTSP
Video Resolution	SXGA, SXVGA, 720P, VGA, QVGA
Frame Rate	NTSC:30, PAL:25
Number of Online Users	10
Security	Multiple user access levels with password
Web management	(1) Web browsers, such as Internet Explorer, Mozilla FireFox & Google Chrome for single device access, or (2) Free CMS software, Video Viewer, for up to 16 network cameras control simultaneously
Camera	
Image Sensor	1/3" MOS-Type Image Sensor
Pixels	1280 (H) x 1024 (V)
Min Illumination	0 Lux (11m IR ON) / 0.2 Lux (IR OFF)
Shutter Speed	At 60 fps: 1/60s to 1/60000s
S/N Ratio	More than 48dB (AGC off)
Lens	f6.0mm
F-number	F1.8
Viewing Angle	62°
IR LED	56 units
IR Effective Range	Up to 25 meters
IR Shift	YES
White Balance	ATW
IP Rating	IP67
Power Source (±10%)	DC12V / 1.5A
Power Consumption (±10%)	--
Current Consumption (±10%)	1000 mA
Operating Temperature	-20℃~40℃
Others	
Mobile Surveillance	iPhone, BlackBerry, Window Mobile & Symbian
Motion Detection	YES
Smart Light Control	YES
Digital Smart Zoom	YES
Digital Pan / Tilt / Zoom	YES
Virtual Fence	YES
Flow Counting	YES
Face Tracking	YES
Alarm and event Notification	By FTP and Email
Minimum Web Browsing Requirements	<input type="checkbox"/> Pentium 4 CPU 1.3 GHz or higher, or equivalent AMD <input type="checkbox"/> 256 MB RAM <input type="checkbox"/> AGP graphics card, Direct Draw, 32MB RAM <input type="checkbox"/> Windows Vista, XP, Windows 2000 Server, ME, 98, DirectX 9.0 or later <input type="checkbox"/> Internet Explorer 6.x or later

** The specifications are subject to change without notice.

** Dimensional tolerance: ± 5mm