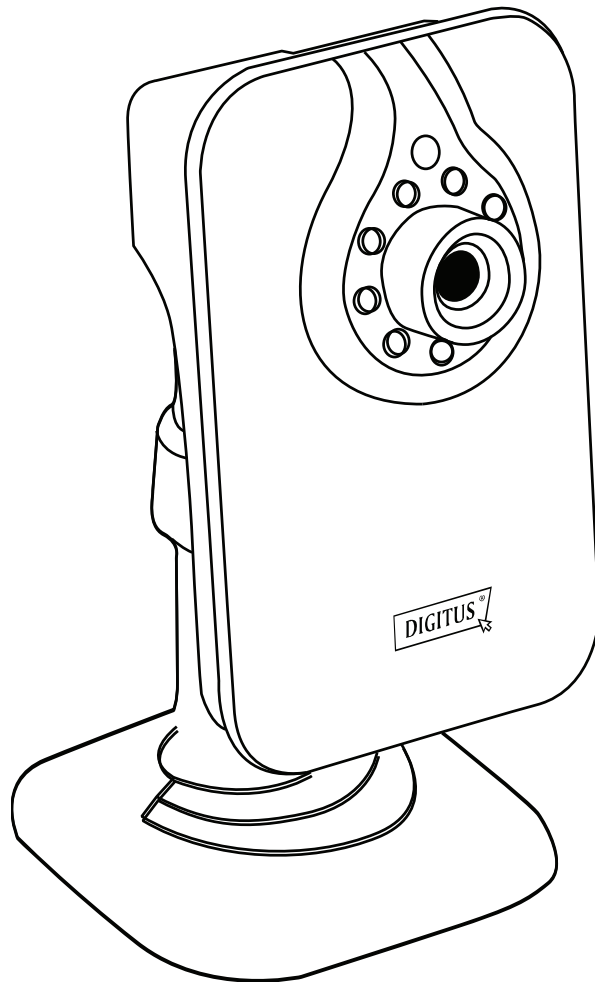




DIGITUS Plug&View OptiView



User Manual

DN-16028

1. Introduction:

DIGITUS Plug&View series of IP cameras offers P2P Cloud service to avoid those complicated network setting for camera installation. All you need is just “Plug&View” with the 3 simple steps.

2. Package Content:

- IP camera x 1
- Power supply x 1
- Ethernet cable x 1
- Support CD x 1
- Mounting accessory x 1

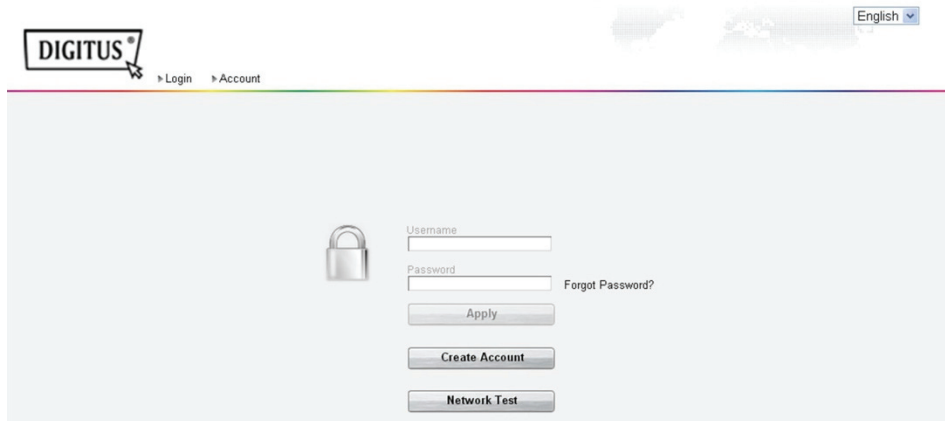
3. Installation Procedures:


3.1 Getting connected

1. Power on the camera and connect the Ethernet cable from the camera to the router. Please make sure that the router is setup to be able to access Internet.



2. Open a browser (Internet Explorer, Google Chrome, Mozilla Firefox...) and key in <http://mydigitus.net/> to access DIGITUS Plug&View Website. Please login your account and password if you already have a Google Account (gmail account). Otherwise, please create a new Google account.



Alternatively you can also download “DIGITUS Plug&View” APP  from APP store or Google Play and execute this APP from your mobile devices and login the account and password instead of using browser.

3. With browser, please key in the MAC address and Activation code as shown on the 1st page of the QIG to add camera under your account. After press “Apply”, it will show “Success”.


No.	MAC Address	Activate Code	Apply
1	<input type="text" value="000102030405"/>	<input type="text" value="ABCDEF12345"/>	<input type="button" value="Apply"/>
2	<input type="text"/>	<input type="text"/>	<input type="button" value="Apply"/>

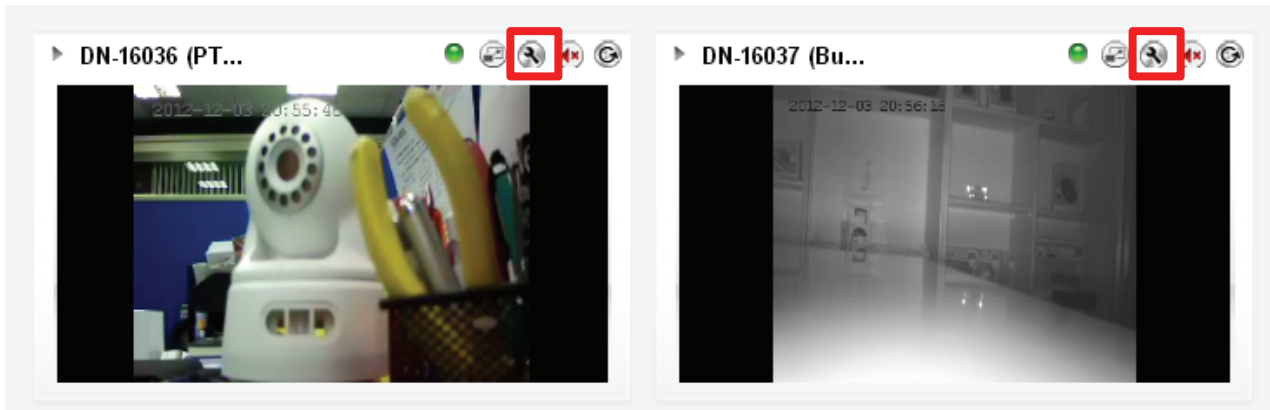
Alternatively the easiest way to add camera without key-in long numbers is using the smart phone to scan the QR code on the 1st page of this QIG using “DIGITUS Plug&View” APP from your mobile devices.

After adding the camera, now you can have live-view anytime anywhere.

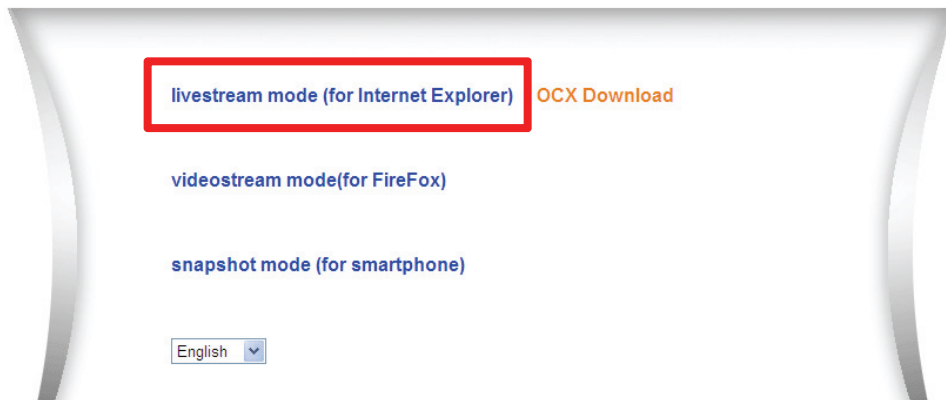
3.2 Getting connected wirelessly

Wireless (WiFi) connection between IP cameras and Wireless router / Access point is also available with the following procedures.

4. After completing Step 1 ~ 3 for wired connection with Ethernet cable, login into <http://www.mydigitus.net/> and click the setting icon  to enter camera user interface.



Then you will enter the Web User Interface of the cameras. Please select livestream mode to enter. Please key in “admin” for the account and password to log in.



5. Press “Tool bar” to enter the configuration page.



- Go to “Wireless Lan Settings” and select the wireless router / access point to connect to. Then enable “Using Wireless Lan” and key in the password. Press “Submit” to take effect of the new WiFi setting and close this camera user interface window. Then unplug the Ethernet cable. Now you can access the camera wirelessly via Plug&View APP or through <http://mydigitus.net>

ID	SSID	MAC	
1	My Network	00:D0:41:C8:64:3E	
2	Digitus AP	7C:F4:29:00:02:DF	
3	Demo	BC:AE:C5:C3:C6:4C	
4	Demo 2	7C:F4:29:00:02:C7	
5	QAQlync1	7C:F4:29:00:04:80	
6	Lab	7C:F4:29:00:02:F4	
7	xxx	7C:F4:29:00:01:B3	
8	ASUS	00:26:18:C7:A7:60	
9	QAtest1	7C:F4:29:00:02:73	

Using Wireless Lan


SSID

Network Type

Authetication

Share Key


4.0 Change Device Name

Go to Settings and click **Config** button  to lead to a **Modify** page for each camera. You may change the name to any desired description.

Name	Owner	MAC Address	Service Type	Port	Device Matrix	Config
DN-16028 (Cube Camera)	digitus-test	00010203045C	Camera	554	<input checked="" type="checkbox"/>	
DN-16036 (PT camera)	digitus-test	000102030480	Camera	554	<input checked="" type="checkbox"/>	
DN-16037 (Bullet Camera)	digitus-test	00010203042D	Camera	554	<input checked="" type="checkbox"/>	


Property	Content
Name	<input type="text" value="DN-16037 (Bullet Camera)"/>
Owner	digitus-test
MAC Address	00010203042D
IP Address	rtsp://60.251.99.254/ch1.h264
Port	554

5.0 Tool bar description


Tool bar  is located on the up-right-side of each IP cam media screen to foster an easy management at your preference.

5.1 Light Signal


■ Green Signal

When you read  the green light that means the IP cam is online and on air, therefore, its video is successfully displayed on the screen.


■ Yellow Signal

When you read  the yellow light that means the IP cam is online but not yet on air, therefore, its video is not displayed on the screen.

■ Red Signal


When you read  the red light that means the IP cam is offline, therefore, the screen is blank.

5.2 Full Screen



Full screen button  is to lead you to a new screen layer where the video is displayed in full screen for the clearer vision and event play back function.



5.3 Live View

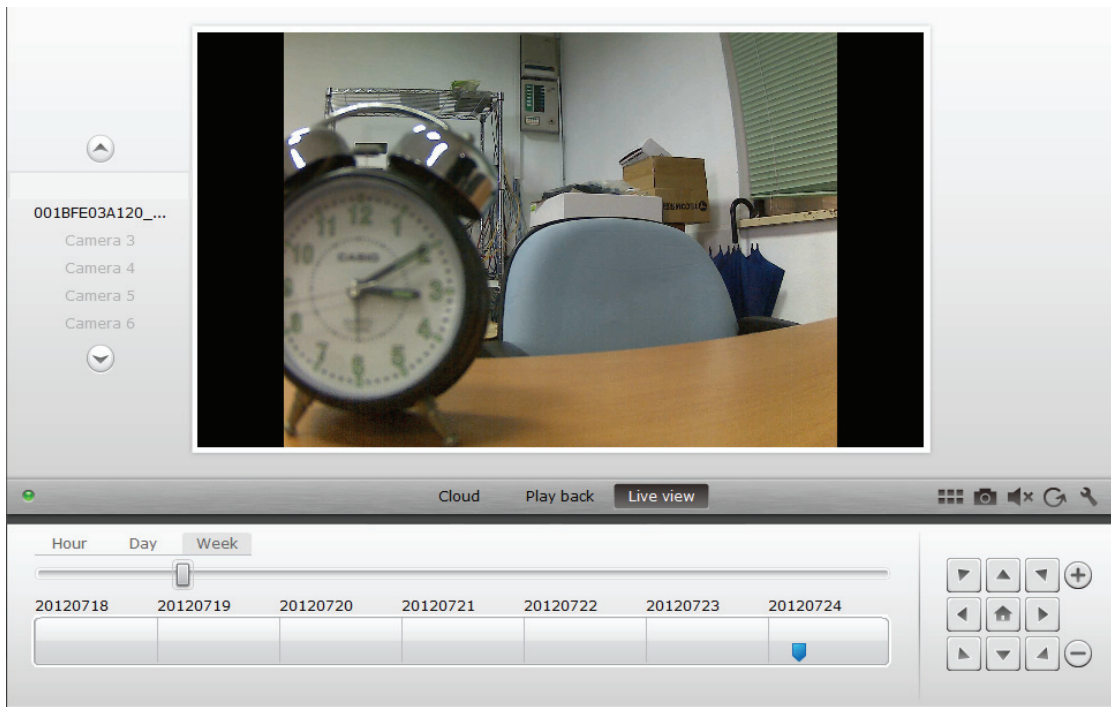
“Live view” button is to view the selected IP cam’s media in a timely manner. You may also select to view the different camera’s media from the **“camera list”**

displayed on the left-hand side of the screen. Click the arrow buttons  and

 to select more IP cams from the list.

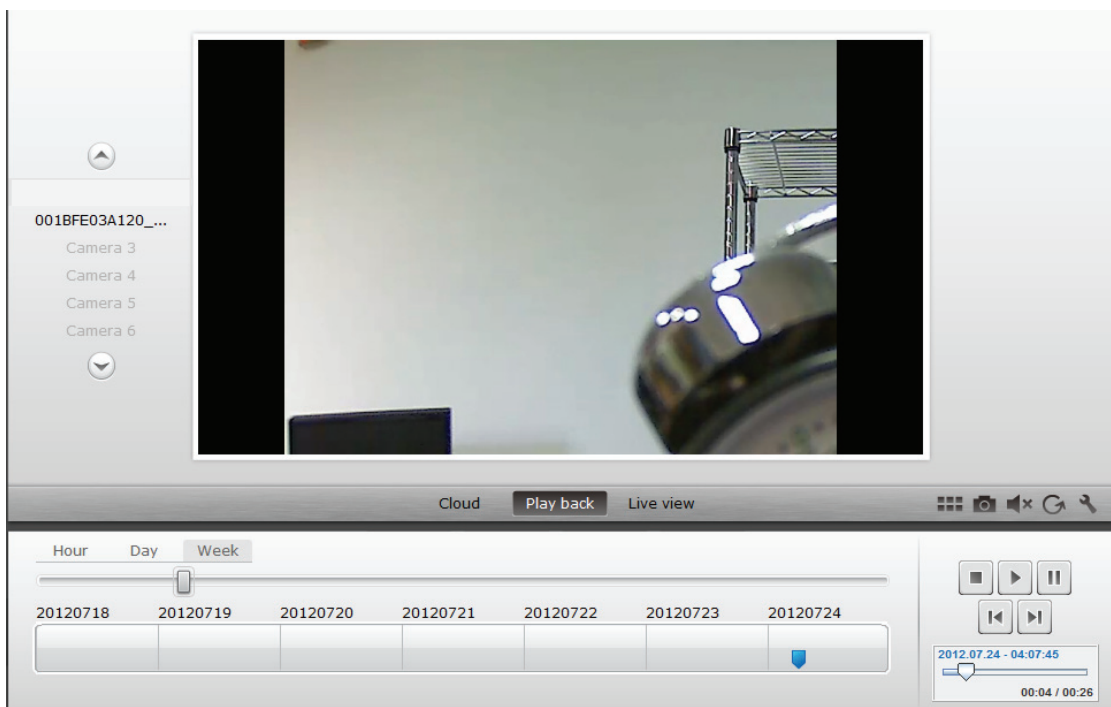
Click  located on the top-right hand side of the screen to exit the full screen function, or click  located on the right-bottom side of the screen to get back to the matrix view page.

You may click  to reload the live view media if you encounter problem getting it. Each selected camera's configuration can be accessed by clicking  on the right-bottom side of the screen.

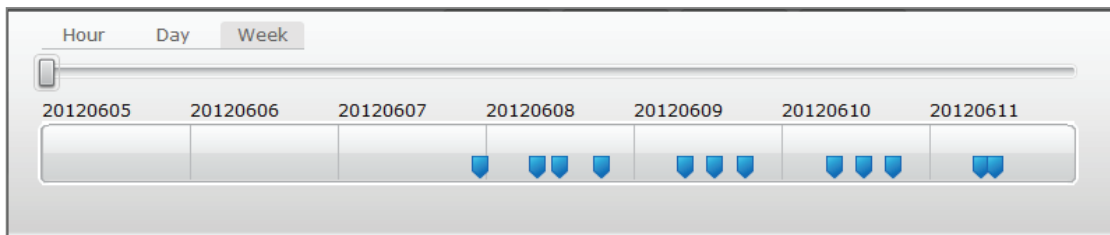


5.4 Play Back

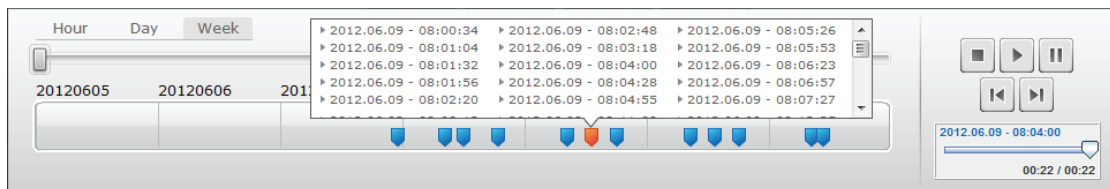
"Play back" function is only supported when IP cam is embedded with SD card for media recording. All the recorded events can be retrieved from the blue mark displayed in timeline.



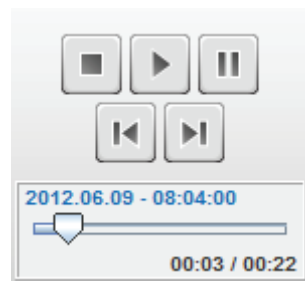
All recorded events are stored and marked in the timeline as in blue tag. You may manage to view them in different time length: by clicking hour, day or week located on the top-left hand side of the timeline.



The detailed recorded clips will be displayed when mouse over on the blue tag and the tag turned to be in orange. You can the select a specific clip to review at your wish.

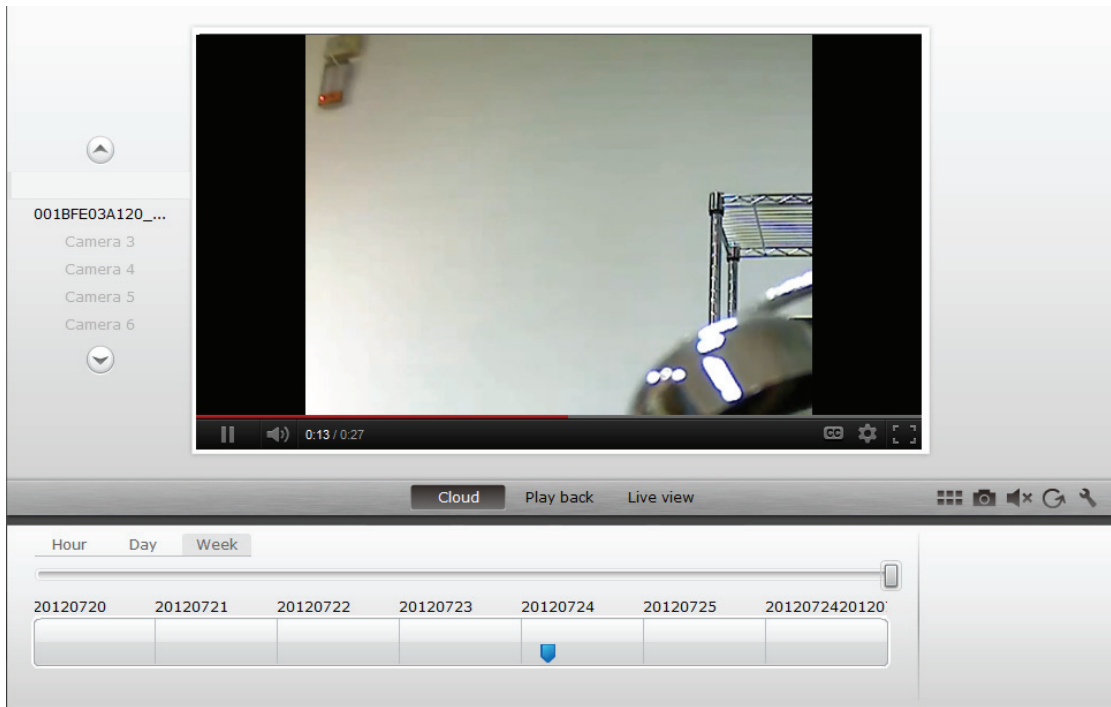


While playing back the selected media clip, you may also manage it to be stopped, paused, move one clip forward or backward from the **media control panel**. Or, you may also drag the **progress bar cursor** to the specific playing point at your preference.




5.5 Cloud



“**Cloud**” is utilized as a backup service to copy those video clips stored in camera’s SD card and save on to your personal Google Drive. Before you can review the clips stored in this “**Cloud**” service, you need to have a Google account and sign in.



Setting

Setting button  is to lead you to that specific IP cam's setting web UI.


Mute

Mute  or un-mute  buttons are used to control whether the users would like to hear the voice receiving via camera or not.


Refresh

Refresh button  is for you to refresh or reload the IP cam video.

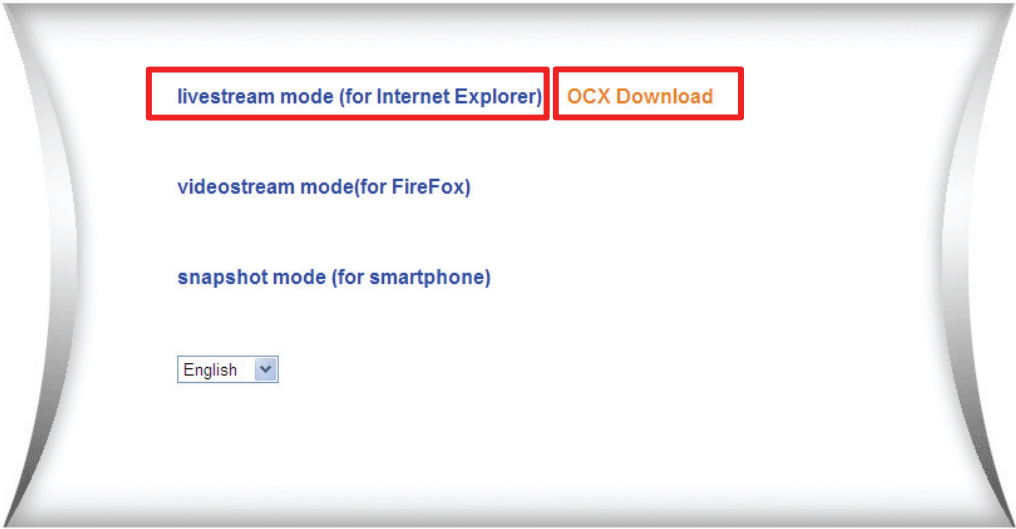
Remove

Remove button  is the button for you to remove this specific IP cam media in Overview page.

6.0 Camera User Interface

After entering Camera User Interface from DIGITUS Plug&View website through setting icon , please key in “**admin**” for the Username and Password to login.

At the first viewing of the IP camera, the browser will prompt the users to install the **OCX** component.



Then press "Livestream mode (for Internet Explorer)" to enter the User Interface.

6.1 Setting Menu Description

Press the tool bar to enter the Setting Menu description



■ 6.1.1 Device Basic Information

You can change the Camera name under “Alias Settings”.

Alias Settings	
Alias	<input type="text" value="DN-16028"/>
<input type="button" value="Submit"/> <input type="button" value="Refresh"/>	

For time setting, you can either synchronize the time with NTP server or synchronize with your computer time.

Device date&Time Settings	
Device Clock Time	Tue, 4 Dec 2012 16:47:57 UTC
Device Clock Timezone	(GMT -08:00) Pacific Standard(USA and Canada) <input type="button" value="v"/>
Sync with NTP Server	<input checked="" type="checkbox"/>
Ntp Server	time.nist.gov <input type="button" value="v"/>
<input type="button" value="Sync with PC Time"/>	
<input type="button" value="Submit"/> <input type="button" value="Refresh"/>	

For recoding to the computer or notebook, you can select the desired recording path. For recycling recording, please tick “Recover cover”.

Record Path	
Record Path	<input type="text" value="C:\"/> <input type="button" value="select..."/>
Record file length(MB)	<input type="text" value="100"/> <small>Least 100MB , MAX 1000MB</small>
Record time length(Minute)	<input type="text" value="5"/> <small>Least 5 Minutes , MAX 120 Minutes</small>
Reserved disk space(MB)	<input type="text" value="200"/> <small>Least 200MB</small>
Record cover	<input type="checkbox"/>
<input type="button" value="Submit"/> <input type="button" value="Refresh"/>	

■ 6.1.2 Alarm Service Setting

To enable motion detection, please tick the box. The motion detection sensitivity is adjustable. You can enable “Send alarm notification by mail”. Mail setting is shown in the next section.

Alarm Service Settings	
Motion Detect Armed	<input checked="" type="checkbox"/>
Motion Detect Sensibility	5 <input type="button" value="v"/> The smaller the value, the more sensitive
Alarm Input Armed	<input type="checkbox"/>
Alarm trigger event	
Alarm preset linkage	None <input type="button" value="v"/>
IO Linkage on Alarm	<input type="checkbox"/>
Send Alarm Notification by Mail	<input checked="" type="checkbox"/>
Upload Image on Alarm	<input type="checkbox"/>
Alarm Arming Time	
Scheduler	<input type="checkbox"/>

Please setup the email setting for the event notification.
 Press "Submit" first before "Test" the email setup.

Mail Service Settings	
Sender	Test
SMTP Server	smtp.gmail.com <input type="button" value="v"/> Please select
SMTP Port	465
Need Authentication	<input checked="" type="checkbox"/>
SSL	TLS <input type="button" value="v"/>
SMTP User	assmann.plug.view@gmai
SMTP Password	●●●●●●
Receiver 1	lewis.liao@assmann.com
Receiver 2	<input type="text"/>
Receiver 3	<input type="text"/>
Receiver 4	<input type="text"/>
	<input type="button" value="Test"/> Please set at first, and then test.

■ 6.1.3 Network Configuration

DHCP is default enabled and it should always be enabled for DIGITUS Plug&View connection.

Basic Network Settings	
Obtain IP from DHCP Server	<input checked="" type="checkbox"/>
Http Port	81

