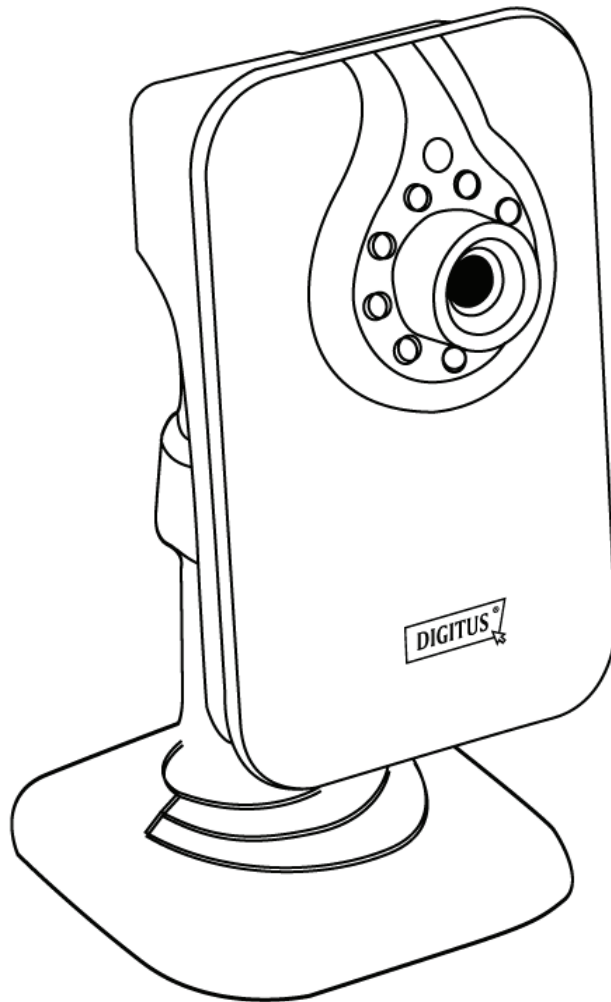


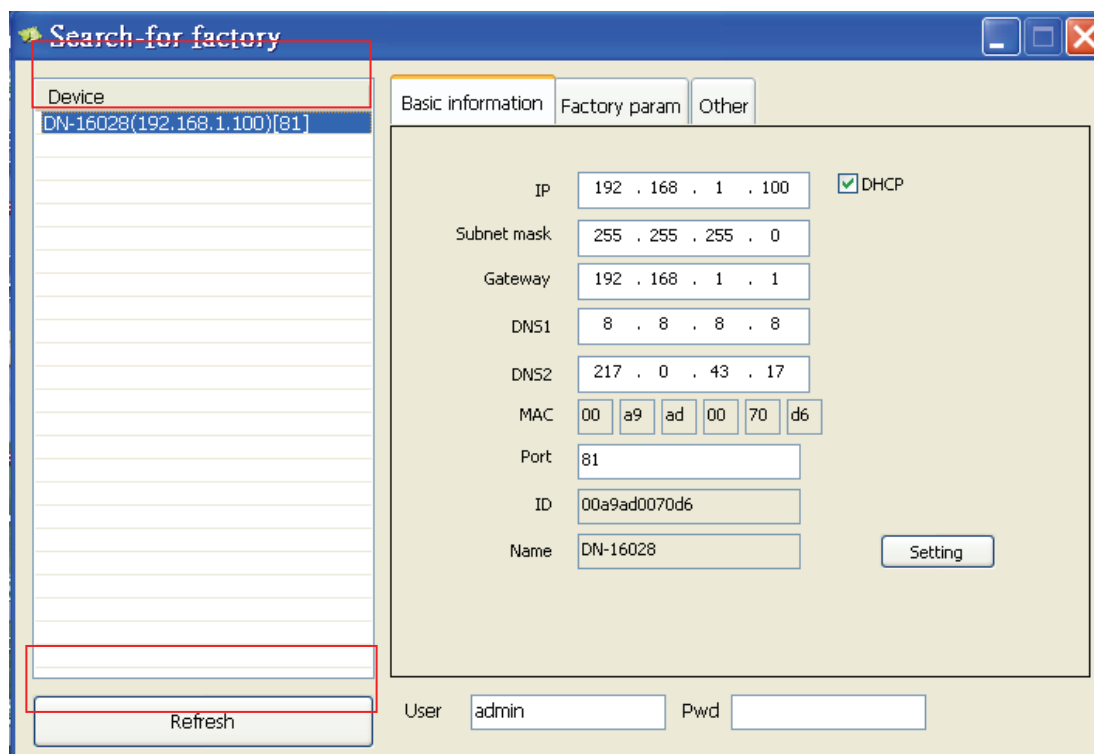


FIRMWARE UPGRADE PROCEDURES

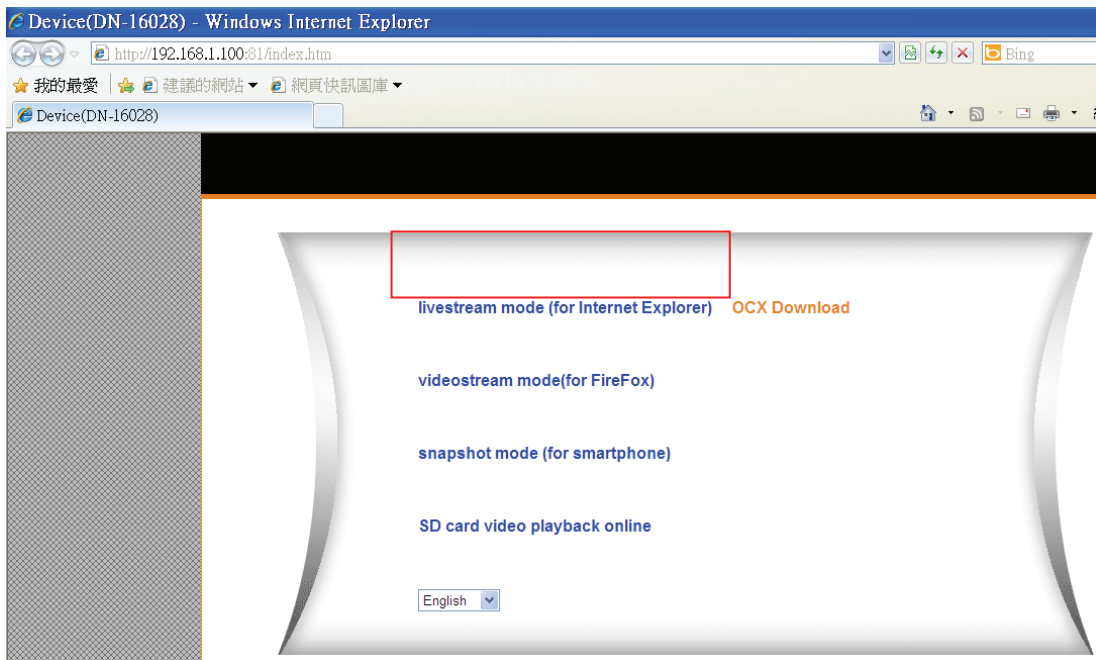


**DIGITUS® OptiView
DN-16028**

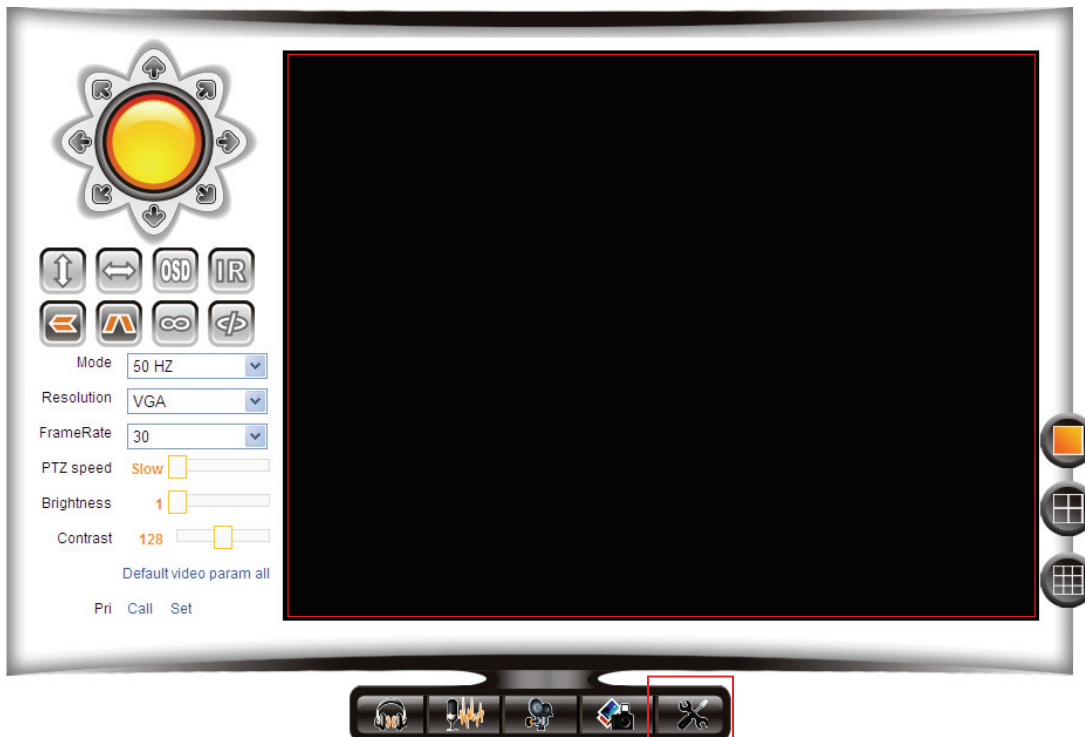
1. Take out the CD in the color box and insert the CD to the Computer/Notebook. Please go to DN-16028 folder and find the “Search Utility”.
2. Please make sure that the IP camera is connected to the same network domain as your Computer/Notebook.
3. Execute the “Search Utility”, and press “Refresh” to find the IP address of the camera. Double click the Device “DN-16028(192.168.x.x)” to enter the Camera Web User Interface.



4. Please key in “admin” as the account and password to enter the Camera Web User Interface. Then press “livestream mode (for Internet Explorer)” to go to the livestream page.



5. Click the “tool” icon to get into the “Setting” page.



6. Please go to “Maintain” and browse to the new firmware (64.1.0.xx.bin) and press “upgrade”. Please wait for 90 seconds for the camera to reboot.

Device basic information	Upgrade Device Firmware
Device Information	Restore Factory Settings <input type="button" value="Restore Factory Settings"/>
Alias Settings	Reboot Device <input type="button" value="Reboot Device"/>
Device date&Time Settings	Upgrade Device Firmware <input type="text" value=""/> <input type="button" value="瀏覽..."/> <input type="button" value="Upgrade"/>
Record Path	Upgrade Device Embedded Web UI <input type="text" value=""/> <input type="button" value="瀏覽..."/> <input type="button" value="Upgrade"/>
Record Schedule	
Alarm Service Settings	
Alarm Service Settings	
Mail Service Settings	
Ftp Service Settings	
Alarm Log	
Network configuration	
Basic Network Settings	
Wireless Lan Settings	
DDNS Service Settings	
PTZ configuration	
PTZ Settings	
User&device manage	
Multi-Device Settings	
Users Settings	
Maintain	
Back	

7. Then repeat the same procedure to upgrade the other firmware file (64.1.0.xx.**patch**.bin).

Device basic information	Upgrade Device Firmware
Device Information	Restore Factory Settings <input type="button" value="Restore Factory Settings"/>
Alias Settings	Reboot Device <input type="button" value="Reboot Device"/>
Device date&Time Settings	Upgrade Device Firmware <input type="text" value=""/> <input type="button" value="瀏覽..."/> <input type="button" value="Upgrade"/>
Record Path	Upgrade Device Embedded Web UI <input type="text" value=""/> <input type="button" value="瀏覽..."/> <input type="button" value="Upgrade"/>
Record Schedule	
Alarm Service Settings	
Alarm Service Settings	
Mail Service Settings	
Ftp Service Settings	
Alarm Log	
Network configuration	
Basic Network Settings	
Wireless Lan Settings	
DDNS Service Settings	
PTZ configuration	
PTZ Settings	
User&device manage	
Multi-Device Settings	
Users Settings	
Maintain	
Back	