



Powerline Ethernet Adapter

Quick Installation Guide

Introduction

The Wall Mount Powerline Ethernet Bridge can be used to bridge any Ethernet device to your powerline networking with 200Mbps high speed, better than wired 10/100Mbps speed. No need to spend time and money professionally installing expensive Ethernet cabling to share your Internet connection or HD/ SD video stream at home. Just plugging the devices to the power outlet on the wall. All with no new wires!

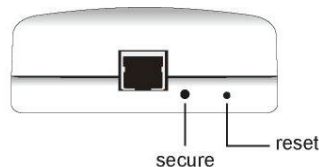
LEDs for Powerline Networking Status

PL Indicate powerline networking activity.
ETH Indicate Ethernet link activity.
PWR Power ready.

Package Content

- Wall Mount Powerline Ethernet Bridge
- Quick installation guide
- Powerline management utility CD
- Ethernet cable

Ethernet Connector



Ethernet Where you will connect 10/100M Ethernet network devices, such as PCs, printer servers, and anything else you want to put on your networks.

Secure Please make sure press this button > 10 sec till all LEDs re-flash for each devices to generate a random network password first. When each devices get the new random network password, please press one device's secure button < 3 sec first and then press another device secure button < 3 sec, the two devices will auto group. It will easy secure your home powerline network. All the operations must be completed otherwise timed out after 2 mins.

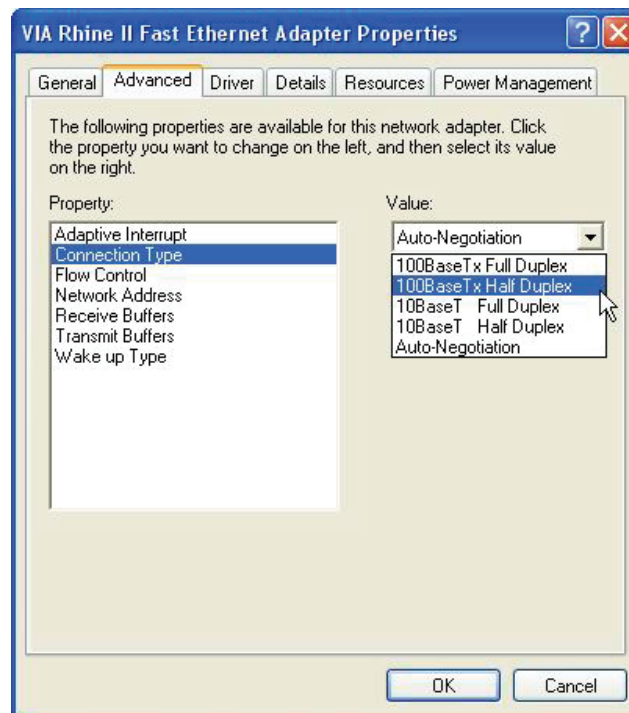
Reset Reset the device to factory default. Please remove the Ethernet cable from RJ-45 Connector before you press the button. Please press the button < 3 sec, the device will auto reset.



Unplug the Ethernet Cable before press the Reset button.

Installation

1. Simply plug into a power outlet and do not use a power strip or UPS with the wall mount device.
2. Use a twisted-pair cable with RJ-45 plugs at both ends, and plug into Ethernet device and Ethernet of Powerline Bridge.
3. Before install Powerline 200M Bridge Utility, please make sure your windows OS already installed the Microsoft .NET Framework 1.1 or later version.



In some respects, User had better to adjust the NB/PC NIC's connection type setting to 100MBaseTx half duplex while connect to powerline 200M device. It will keep the performance to the best status and stable. When user found the link is unstable or not good, please change the NIC's connection type setting to half duplex.

Warning

This is a class A product. In a domestic environment this product may cause radio interference in which case the user may be required to take adequate measures.

Important Safety Instructions

This product is intended for connection to the AC power line.

The following pre-cautions should be taken when using this product:

- Please read all instructions before installing and operating this product.
- Please follow all warnings and instructions marked on the product.
- Do not operate this product near water.
- This product should never be placed near or over radiator, or heat register.
- This product relies on a building's electrical installation for short-circuit (over current) protection.
- Ensure that a fuse or circuit breaker is used on the phase conductors (all current-carrying conductors).
- Do not allow anything to rest on the product interconnect cords.
- Do not locate this product where people may walk on the cords.
- The power cord should be plugged directly into a specification AC wall outlet.
- Only a qualified technician should service this product. Opening or removing covers may result in exposure to dangerous voltage points or other risk.
- Unplug this product from the wall outlet and refer the product to qualified service personnel for the following conditions:
 1. When the interconnect cords are damaged or frayed.
 2. If liquid has been spilled onto the product.
 3. If the product has been exposed to rain or water.
 4. If the product does not operate normally when the operating instructions have followed.
 5. If the product exhibits a distinct change in performance.