



Multifunction USB Network Server Series

Quick Installation Guide

DN-13023

Safety Precautions

- Only use the device within the specified temperature range for: 0 ~ 40°C
- When not in use, store the product in a clean and dry place in temperatures between 0°C and 40°C
- Do not let the indoor devices come into contact with liquids
- Ensure that the indoor devices are only used inside. These devices are not intended for outdoor use and would be damaged
- During thunderstorms, there is a danger of lightning strike and due to overvoltage damage to connected electrical appliances
- Do not install the product during a thunderstorm
- Disconnect the product from power source during a thunderstorm
- Keep the devices outside the reach of children, since these components can be dangerous
- Never try to repair the device by yourself. Repair and maintenance work must be carried out by specialists
- In case of problems contact our customer service
- Dust, humidity and vapours as well as sharp cleaning agents or solvents can damage the product
- Disconnect the product from the power source before cleaning
- Clean the product with a slightly damp, lint-free cloth

Introduction

This document describes the steps for installing and configuring the Multifunction USB Network Server as a USB device server in the Windows environment.

Package Contents

If any item is missing, please contact the shop where you bought this product.

- One Multifunction USB Network Server (x1)
- One Quick Installation Guide (x1)
- One Control Center Software CD (x1)
- Power Adaptor DC IN 12V/2A (x1)

OS Supported

- Windows XP, Windows Vista, Windows 7, Windows 8, Windows 10
- Mac OS X 10.6 Snow Leopard, Mac OS X 10.7 Lion, Mac OS X 10.8 Mountain Lion, Mac OS X 10.9 Mavericks, Mac OS X 10.10 Yosemite, OS X 10.11 El Capitan

Physical Description

1. **Power Adaptor Connector:** for DC IN 12V/2A power adaptor
2. **Init Button:** for restoring the configurable parameters to the default values
3. **Wireless Station:** IEEE 802.11 b/g/n wireless station with antenna
4. **Ethernet Connector:** connected to a twisted pair category 5 cable
5. **USB Host Ports:** USB 1.1/2.0 low, full, and Hi-Speed compliant

6. Indicators

- *Power Indicator* is lit while power is applied. If it is not lit, or if it blinks, there is a problem with the USB device server or Power Adapter.
- *LAN Indicator* blinks to indicate wired network activity. If it is lit, it indicates the wired network is applied. If it is not lit, it indicates that the server does not connect to the wired network.
- *WLAN Indicator* blinks to indicate wireless network activity. If it is lit, it indicates the wireless network is applied. If it is not lit, it indicates that the server does not connect to the wireless network.
- *USB Indicator(s)* is lit while a USB device connects to a USB Port of the USB device server. If it is not lit, or if it blinks, there is a problem with the USB device or the USB device server.

Connect Multifunction USB Network Server to Your Wired Network

- I. Connect Server to the wired network, such as a LAN switch or a LAN hub, using a LAN cable.
- II. Connect USB printers, hard drives or flash ROM disks, or all-in-one series printers (AIO/MFP), or USB speaker, or USB 1.1 camera to the server using USB cables.
- III. Plug in the power adaptor (included in this package) to power on the device.

Connect Multifunction USB Network Server to Your Wireless Network

- IV. Follow Step 5.
- V. Properly set up wireless configuration as Step 8.
- VI. Plug-off the LAN (Ethernet) cable.
- VII. Plug-off the power adapter and then plug-in the power adapter to restart server. The server will connect to your wireless network.

Install Utility

VIII. Insert the included CD-ROM into the personal computer.

The Autorun screen should appear.

IX. Click **Install Product** button.

X. Click **Next**, if you see any Next button in installation windows.

XI. Click **Finish**.

Configure Server with Utility

Using the Control Center Software (Fig 1):

1. Run the Control Center. It will automatically search the existing servers and display their status.

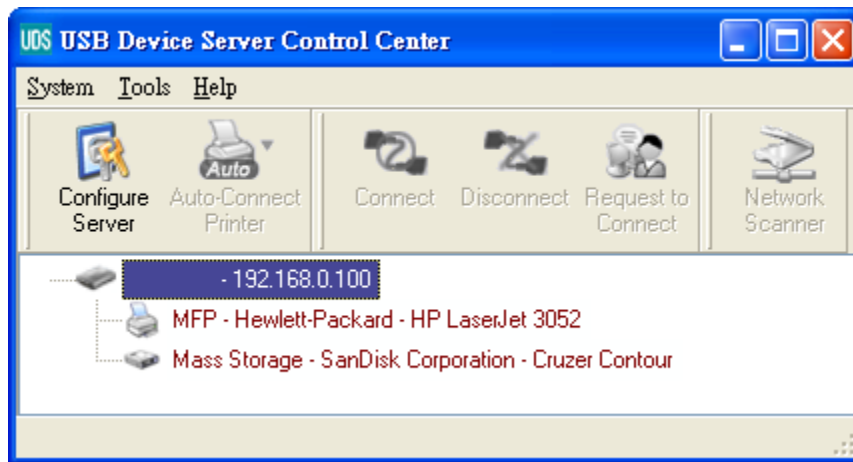


Figure 1 Control Center

2. Select the server that you want to configure. Double click the selected server and you will get the web pages of the server.

Web Page

3. Click "CONFIG" icon and then enter Administrator (default: *admin*) and Password (default: *admin*) to login.
4. Assign IP address to server as. Please choose one method to set the IP address of the server. You can automatically get IP address by using DHCP or manually assign an IP address to the server.

TCP/IP Setting

5. Set up wireless configuration (only for wireless model):

- Set SSID, Channel, and Security according to the table below

	Infrastructure Mode
SSID	Must match the Access Point.
Channel	Access Point sets the Channel used. Wireless stations automatically locate the correct channel.
Security Settings	Must match the Access Point.

Install the Driver of the USB Device

Some USB devices, like printers or MFPs (multifunction printers), require to install vendor-supplied driver (usually on CDROM). For those USB devices that do not need to install driver, please skip to next step.

- Insert the CDROM into the CD drive and run the “autorun” program.
- Follow the instructions of the installation program to install driver.
- When the installation program asks you to plug-in the USB device, run the “Control Center”.
- In the Control Center, click the USB device server that has the desired USB device attached.
- Click the desired USB device as Fig 4.

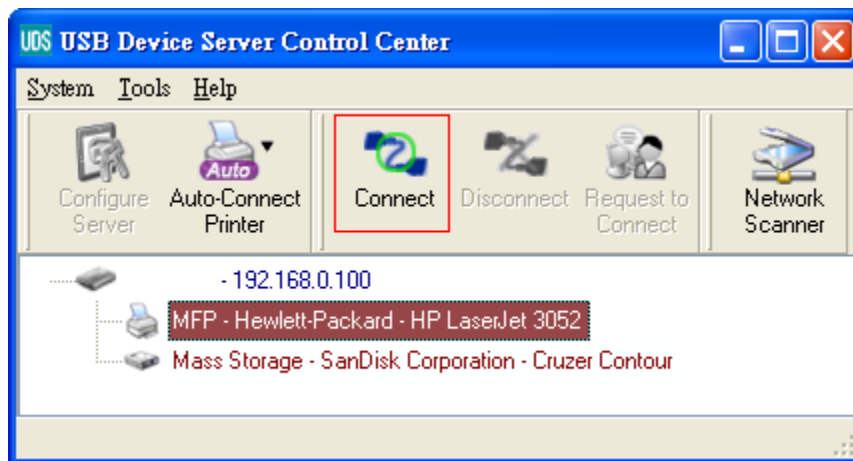


Figure 4 Click the Desired USB Device

- Click the “Connect” button. Then the message “Manually Connect by your_computer_name” will be shown, as Fig 5.

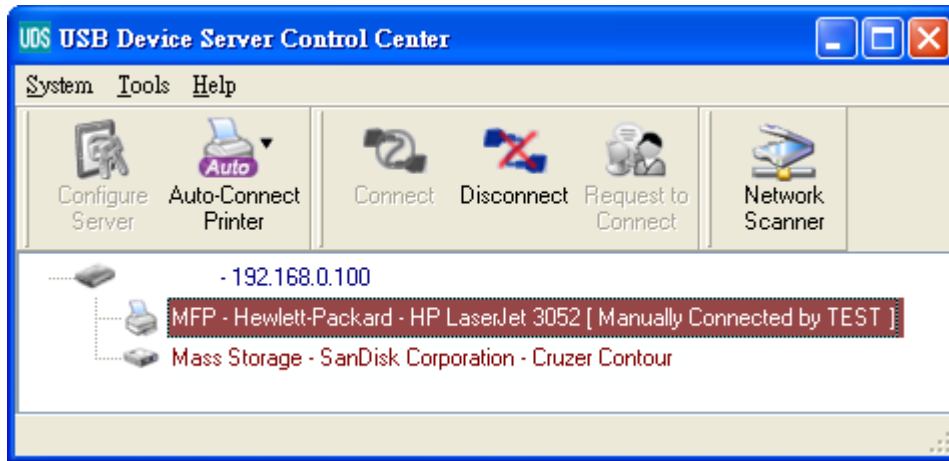


Figure 5 Device Connected

- G. Now, the installation program will detect the USB device and continue to install driver.
- H. After the installation is completed, click the USB device in the Control Center and then click the “Disconnect” button to disconnect the USB device.

Use the USB Device

- A. In the Control Center, click the USB device server that has the desired USB device attached.
- B. Click the desired USB device as Fig 4.
- C. Click the “Connect” button. Then the message “Manually Connect by *your_computer_name*” will be shown, as Fig 5.
- D. Now, PC will detect the plug-in of the USB device. The “connect” operation is a software operation that simulates an actual USB device plug-in. That is to say, when you do a “connect” operation in the Control Center, PC can then detect a USB device’s plug-in, although actually you do not plug in any USB device.
- E. Then, just use the USB device as if it is connected directly to your PC’s USB port.
- F. After you finish using the USB device, click the USB device in the Control Center and then click the “Disconnect” button to disconnect the USB device, as Fig 6. Other PCs can not “Connect” the USB device until you “Disconnect” that USB device. That is to say, only one PC is allowed to connect the USB device at the same time.

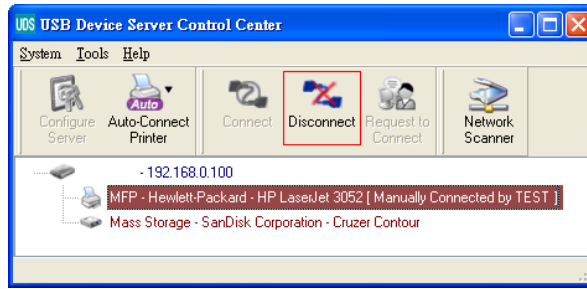


Figure 6 The Disconnect Button

An Example of USB Storage

If you connect a USB storage, like Fig 7, your PC will have a new disk. If the USB storage is a flash drive, the new disk is a “removable disk”.

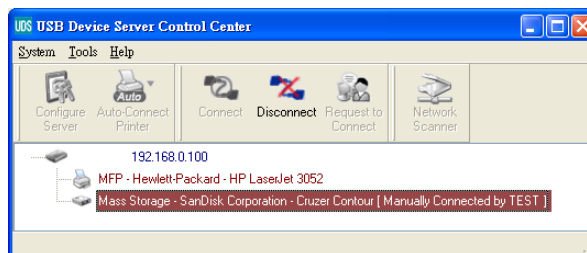


Figure 7 The USB Storage

You can see the storage icon in the system tray, as Fig 8.

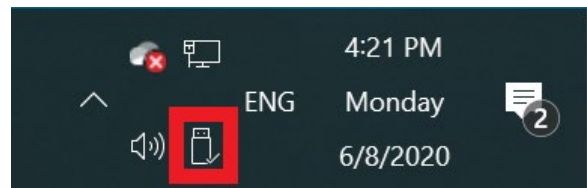


Figure 8 The System Tray

Then just use the new disk as a general disk. After you finish the disk operations, click the storage icon in the system tray and choose “Safely Remove Hardware and Eject Media” to remove the USB storage, as Fig 9.

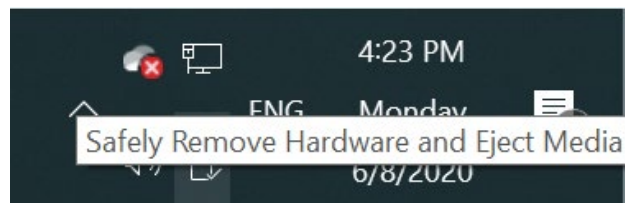


Figure 9 Removing the USB Storage

Then, in the Control Center, click the USB storage device and click the “Disconnect” button to disconnect the USB storage device.

Default Parameters

Some of the important default parameters are shown below.

- Administrator: admin
- Password: admin
- Server Name: DIGITUS
- Workgroup: WORKGROUP
- Static IP: 192.168.1.100
- DHCP: enabled

Technical Description

- Frequency Range 2400-2483.5 MHz
- Transmit Power 16.55-19.98 dBm EIRP
- Hardware Version 1.0
- Software Version 2.0.6

Hereby ASSMANN Electronic GmbH, declares that this device is in compliance with the requirements of Directive 2014/53/EU and the Directive 2011/65/EU for RoHS compliance. The complete declaration of conformity can be requested by post under the below mentioned manufacturer address.

Warning

This device is a class B product. This equipment may cause some radio interference in living environment. In this case, the user can be requested to undertake appropriate measures to prevent interference.

www.assmann.com

Assmann Electronic GmbH
Auf dem Schüffel 3
58513 Lüdenscheid
Germany

