



# USB 2.0 ETHERNET PRINT SERVER



DN-13014-3

DN-13003-1

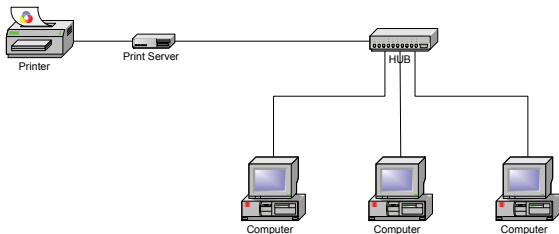


**Quick Installation Guide**  
DN-13014-3 • DN-13003-1

## Before you start, you should prepare the following items:

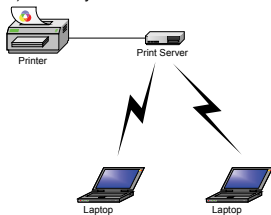
- Windows 2000/XP/2003/Vista/7/8/10 computer with print server setup CD
- One Printer(non-GDI/CAPT)
- One Printer cable
- One 802.11b/g/n Access Point (optional)

## Wired Network with Print Server:

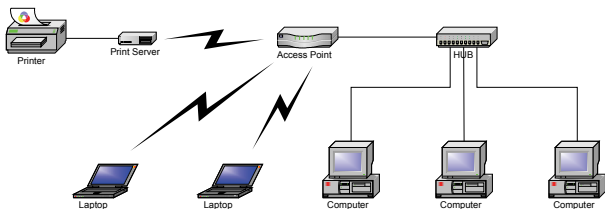


## Wireless Network with Print Server:

Ad-Hoc mode (Peer to Peer) – Factory Default:



Infrastructure mode (Access Point):



## Factory Default Settings:

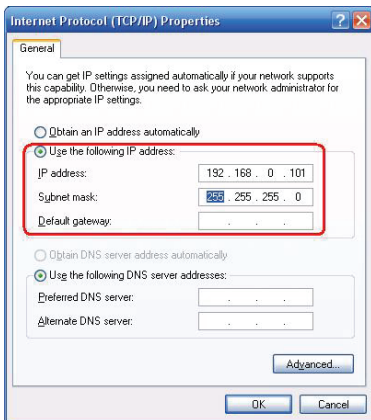
- Password:
- Wireless Mode: Ad-Hoc (Peer-to-Peer)
- Channel: 6
- SSID: WLAN-PS
- IP Address: 192.168.0.10
- Subnet Mask: 255.255.255.0

## Hardware Installation:

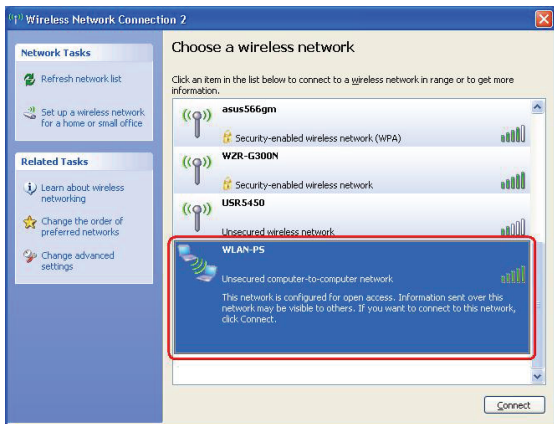
1. Turn off the printer's power.
2. Connect the print server to your printer with the supplied printer cable.
3. Turn the printer's power on.
4. Plug the AC power adapter into the power connector on the print server.
5. Wait 40 seconds as part of the print server's Power On Self Test (POST).

## Prepare Your Computer to Connect Wireless Print Server first (Wireless Ad-Hoc Mode):

1. Please specify a proper IP address for your wireless adapter, e.g.192.168.0.101.



2. Find the wireless print server by Windows Zero Configuration or vendor utility of wireless adapter. Then click **Connect**.



Or

You can use **WPS** function to quickly set up a wireless network with strong security, without having to configure security settings manually.

1. Press **WPS** buttons in each of the device itself and Wireless AP in three seconds and release it, then the WLAN LED of device will be off.
2. Wait two minutes to find another device that also has WPS activated. Then, the two devices connect and set up a secure network by themselves.

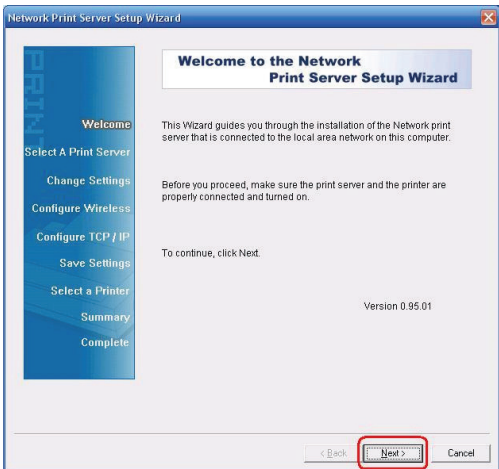
### Software Installation:

1. To enable network communication with print server, your computer must have a proper IP address, e.g. 192.168.0.101 (the print server's default IP is 192.168.0.10)
2. Insert the setup CD into your CD-drive. The autorun program will be started.

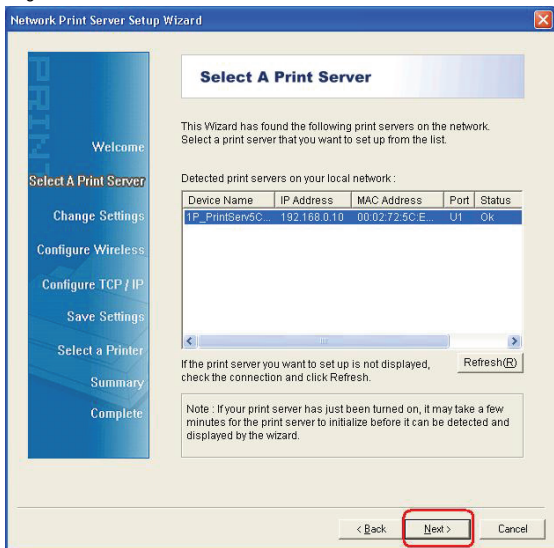
3. Choose **Setup Wizard** to install the print server and configure the connected printer.



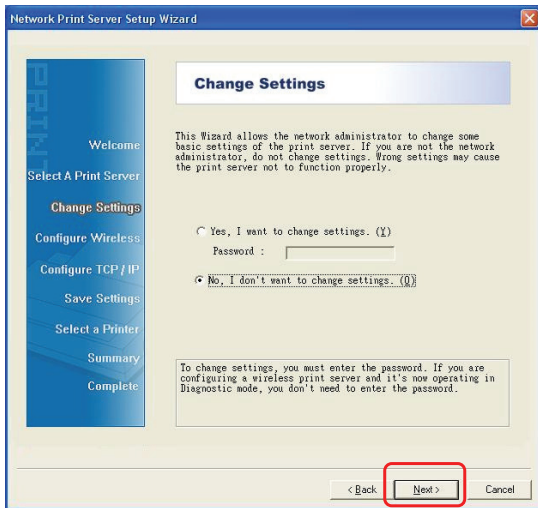
4. Click **Next**, the wizard will automatically discover the print server.



5. From the **Select A Print Server** screen, select the print server port that you want to configure and click **Next**.



6. On the **Change Settings** screen, select **No** or **Yes**:



Click **No** if you want the wireless print server to keep using the default IP address and the default settings:

- Password:
- Ad-Hoc mode
- Channel: 6
- SSID: WLAN-PS
- Encryption: none
- DHCP client: Off
- IP address: 192.168.0.10
- Subnet Mask: 255.255.255.0

Or

Click **Yes** if you want change wireless settings or assign a static IP address to the print server:

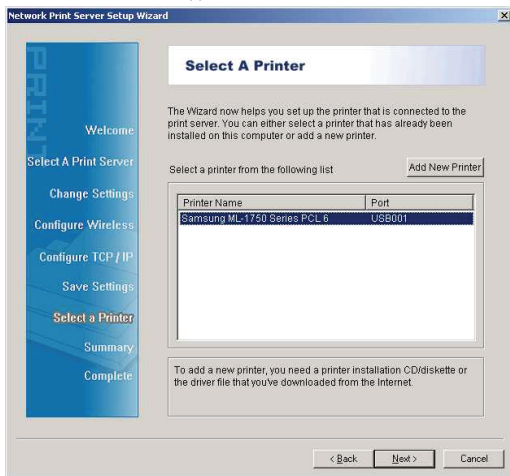
- On the **Basic Wireless Settings** screen, select **Communication Type** according to your network:
  - Infrastructure
  - Ad-Hoc

- Enter the proper **SSID** of your wireless network.
  - **Channel**: optional
  - **Data Transmit Rates**: select Auto or others
  - **Transmit Mode**: select Auto or others
- On the **Wireless Security** screen, enable or disable WEP/WPA/WPA2 encryption, configure according to your wireless network and click **Next**.
- On the **TCP/IP Settings** screen, specify a fixed or dynamic IP address for the print server, a fixed IP address is highly recommended. Click **Next**.

**Note:**

The IP address of print server must be within the same subnet as your network adapter.

7. In the setup wizard, select an already configured printer from the list, click **Next**, **Next** and then **Finish** to complete the installation.
- or
- Select **Add New Printer** if the print server is connected to a printer that hasn't been installed before and does not appear in the list.

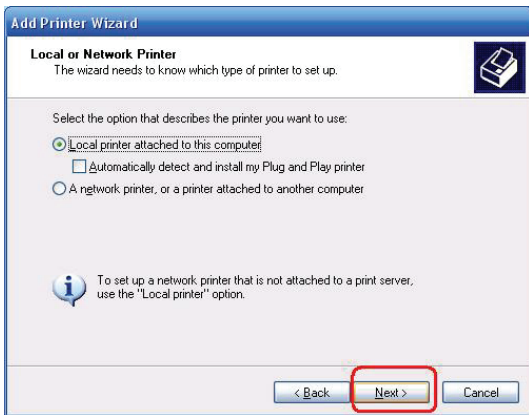




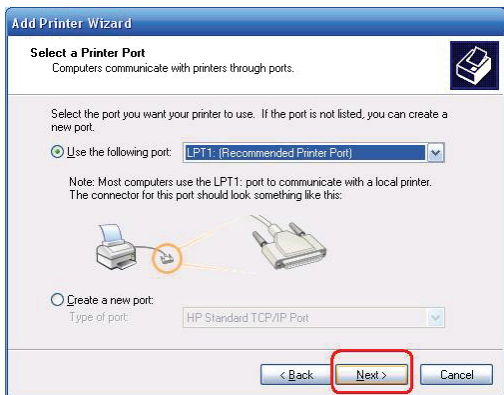
8. Click **Add New Printer** to launch **Windows Add Printer Wizard**.



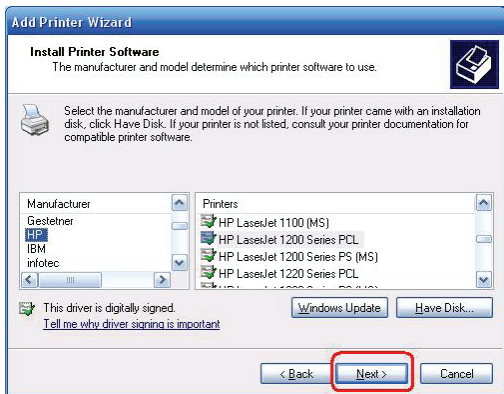
9. Click **Next** and select **Local Printer**, make sure the **Automatically detect and install my Plug and Play printer** check box is **NOT** checked. Then click **Next**.



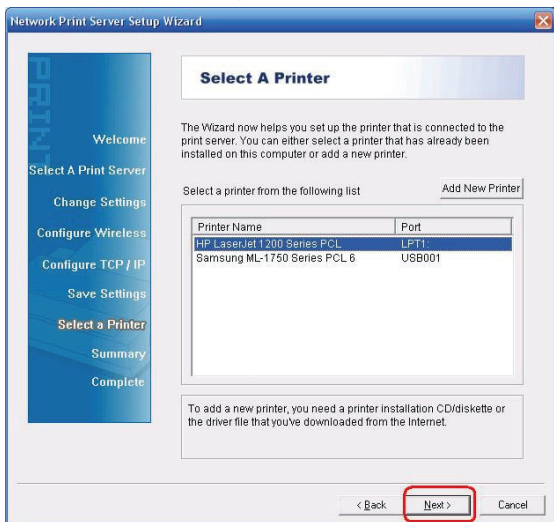
10. Make sure the **Use the following port** radio-button is clicked and select **LPT1: (Recommended Printer Port)** from the pull-down list. Then click **Next**.



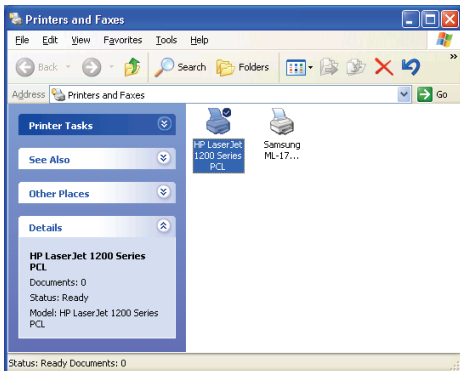
11. Select **Manufacturer** and **Printer** from the lists of printer's driver. Then click **Next**.



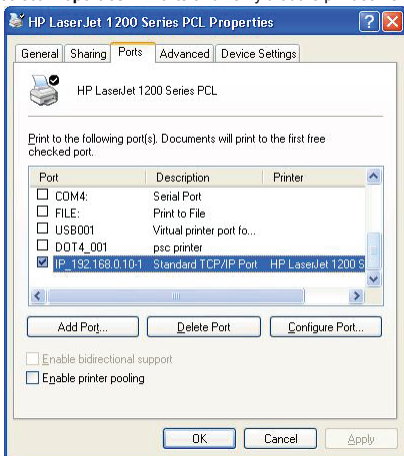
- If you already have the printer's driver installed, you will be asked whether to keep it or to replace it. Click **Next**. Supply a name for the printer and choose whether you want to make it your default printer. Then click **Next**.
- Then, choose whether you want to share the printer with other network users, print a test page (please select **No.**), etc. Select the appropriate radio-button and click **Next** and **Finish**.
- In the setup wizard, finish the installation by highlighting the installed printer in the **Select a Printer** list and click **Next**, **Next** -> **Finish**.



15. From Windows system, go to **start -> Printers and Faxes** and highlight your newly installed printer.



16. Right-click, select **Properties -> Ports** and verify that the print server's port appears.



17. Go to **General**; click **Print Test Page** to verify the configuration.

18. Done.

**Note:**

If you wish to install more print servers, start setup wizard from your Windows Start menu: **start -> All Programs -> Network Print Server -> Standard TCP/IP Printer Port -> PSWizard** and repeat the installation procedure.

### How to create print server port manually?

1. From your Windows Start menu: **start -> All Programs -> Accessories -> System Tools -> Control Panel -> Hardware and Sound -> Printers.**
2. Find your installed printer icon, right-click, select **Properties -> Ports -> Add Port -> Standard TCP/IP Port -> New Port -> Next.**
3. Input the exact IP address of print server that you configured it. Click **Next.**
4. Select **Custom**, and click **Settings.**
5. Choose **LPR**, and input the queue name as **lp1.**
6. Click **OK -> Next -> Finish**, to complete the wizard.
7. Click **Close -> Apply.**
8. Now, the print server port has been created.

### How to know the current settings of print server?

1. Plug the AC power adapter into the power connector on the print server.
2. Wait 40 seconds as part of the print server's Power On Self Test (POST).
3. Press the reset button for 8 seconds, and then release it.
4. Then, the test page includes the current settings of print server will be printed out.

Hereby ASSMANN Electronic GmbH, declares that this device is in compliance with the requirements of Directive 2014/53/EU and the Directive 2011/65/EU for RoHS compliance. The complete declaration of conformity can be requested by post under the below mentioned manufacturer address.

**Warning:**

This device is a class B product. This equipment may cause some radio interference in living environment. In this case, the user can be requested to undertake appropriate measures to prevent interference.

www.assmann.com  
Assmann Electronic GmbH  
Auf dem Schüffel 3  
58513 Lüdenscheid  
Germany



\* All contents and specifications are subject to change without notice. Other brands and product names are trademarks or registered trademarks of their respective owners.