



USB to PARALLEL PRINTER CABLE



Manual
DC-USB-PM1

Introductions

The USB to parallel printer cable allows your PC to print to most parallel printer device connected through the USB port. Just plug the USB connector of the cable into the USB port of your PC and the other end into the Centronics connector of the parallel printer. USB (Universal Serial Bus) interface provides up to 12Mbps data throughput, so printing is much faster compared when connected to standard parallel port (150kbs). The USB-Parallel cable also provides true plug-n-play and hot-plug capability – simply plug in the cable under the Windows operating system and the cable will be instantly detected.

Specifications & Features

Single chip (ASIC) USB to Parallel communication

Windows 98 and Windows Me Driver Support

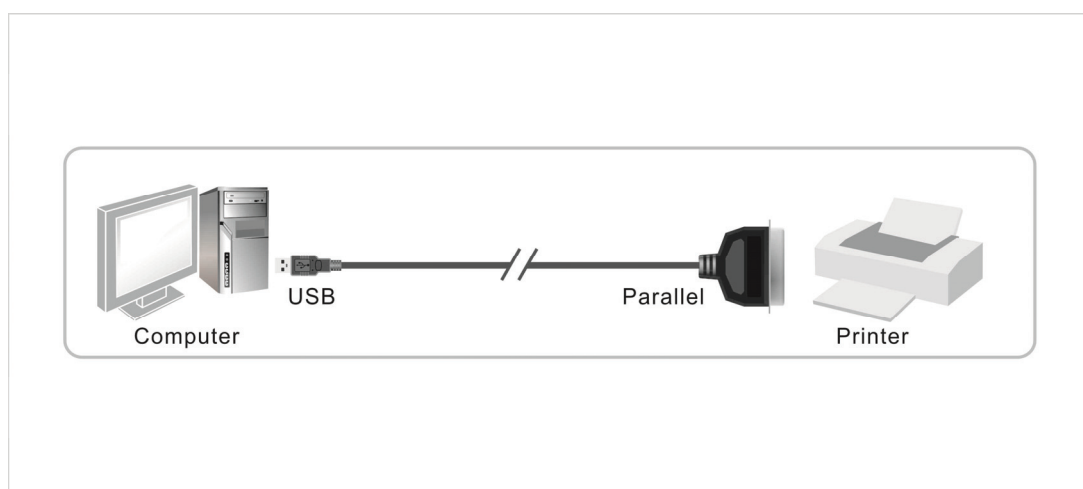
Universal Serial Bus Specification Rev. 1.1 compliant

USB full speed communication and bus powered

USB Printer Class Specification 1.0 compliant

IEEE-1284 1994 (bi-directional parallel interface) specification compliant

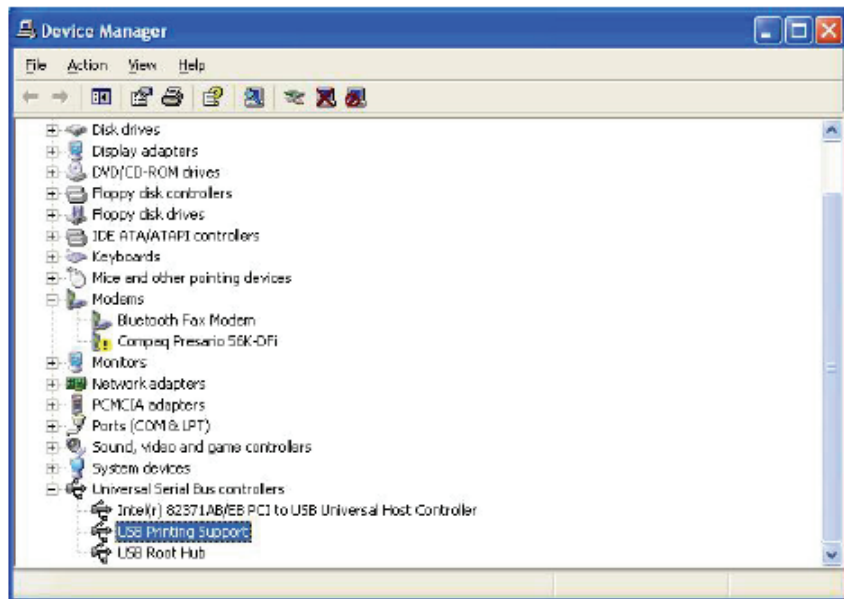
Product connection diagram (Application)



Attentions

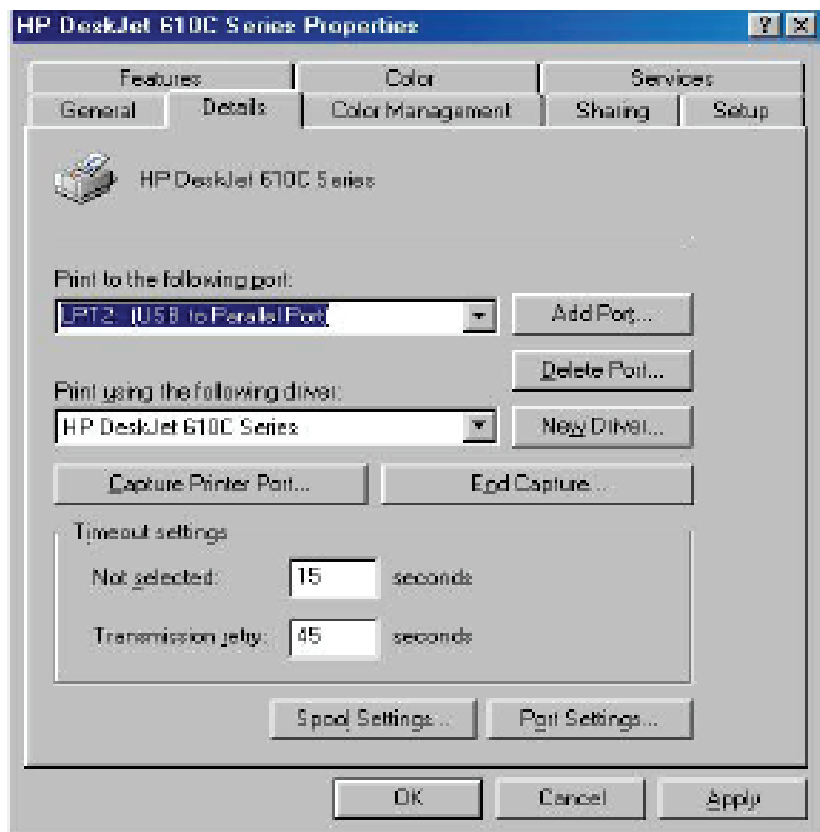
You need to install the driver under Windows98.

1. Power on your computer and make sure that the USB port is enabled and working properly.
2. Plug in the USB-Parallel cable into the USB port and Windows will detect the IEEE-1284 device and run the Add New Hardware Wizard to assist you in setting up the new device.
3. Plug in the USB-Parallel cable into the USB port and Windows7.0/8.0/8.1/XP will detect the device and installing the USB PRINTING SUPPORT automatically.

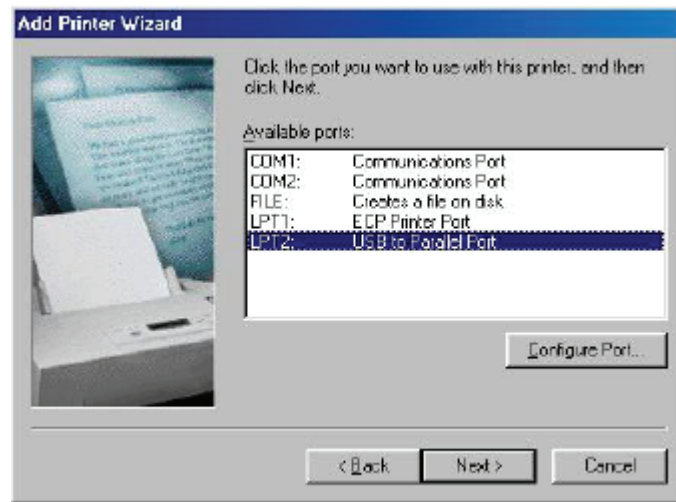


Setting Up the Printer Device (Windows 98)

1. If you have already installed a printer device before, click Start, Settings, and Printers. Right-click the default installed printer and click on Properties. The Properties dialog box of the installed printer will appear on your screen.
2. Click the Details folder tab and change the printer port to LPT2:
(USB to Parallel Port).

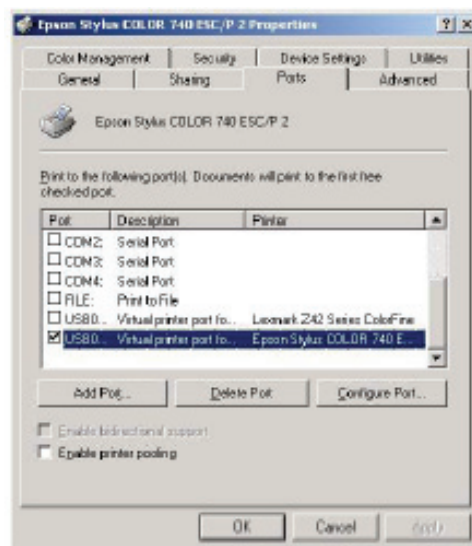


3. If you do not have a printer installed yet, click on Start, Settings, Printers, Add Printer. The Add Printer Wizard will start and assist you in installing a new printer device. Select the printer manufacturer and model name from the list provided by the wizard or use the printer driver diskette supplied with your printer.
4. When prompted which port the printer will use, click on LPT2: USB to Parallel Port.



Setting Up the Printer Device (windows7.0/8.0/8.1/XP)

1. If you have already installed a printer device before, click Start, Settings, and Printers. Click right button of your mouse on the printer and click on PORTS to select the USB0.



2. If you do not have a printer installed yet, click on Start, Settings, Printers, Add Printer. The Add Printer Wizard will start and assist you in installing a new printer device. Select the printer manufacturer and model name from the list provided by the wizard or use the printer driver diskette supplied with your printer.
3. When prompted which port the printer will use, click on USB0.

Printer List

company	Printer model
HP	<p>HP DeskJet :</p> <ol style="list-style-type: none"> 1. DeskJet 420, DeskJet 500C, DeskJet 520C, DeskJet 670C, 2. DeskJet 692C, DeskJet 695C, DeskJet 710C, DeskJet 750, 3. DeskJet 850C, DeskJet 870C, DeskJet 890C, DeskJet 895, 4. DeskJet 1100C, DeskJet 1120C <p>HP LaserJet :</p> <ol style="list-style-type: none"> 1. LaserJet III P, LaserJet 4, LaserJet 4 PLUS, LaserJet 4P, 2. LaserJet 4L, LaserJet 4V, LaserJet 5P, LaserJet 5L, 3. LaserJet 5M, LaserJet 6P, LaserJet 6L, LaserJet 1100A, 4. LaserJet 2000C, LaserJet 2100M, LaserJet 4000, LaserJet 5000
Epson	<p>Epson Stylus :</p> <ol style="list-style-type: none"> 1. Stylus Color 300, Stylus Color 400, Stylus Color 440, Stylus C4 2. Stylus Color 600, Stylus Color 740, Stylus Color 800, Stylus Color 850, 3. Stylus Photo 700, Stylus Photo Ex ,Stylus Photo 790 , Stylus Photo 810 <p>Epson PM :</p> <ol style="list-style-type: none"> 1. PM-700C, PM-750C, PM-2000C <p>Epson EPL :</p> <ol style="list-style-type: none"> 1. EPL-N1600 , LQ-300K , LQ-300K+, EPL-6200L,
Canon	<p>Canon BJC :</p> <ol style="list-style-type: none"> 1. BJC-30, BJC-50, BJC-70, BJC-80, BJC-200, BJC-200ex, 2. BJC-210, BJC-210sp, BJC-230, BJC-240, BJC-250, 3. BJC-255sp, BJC-4000, BJC-4100, BJC-4200sp, BJC-4300, 4. BJC 4650, BJC-6000, BJC 7000 5.PIXUS 560i
Lexmark	<p>Lexmark :</p> <ol style="list-style-type: none"> 1. XJ-350, 1100, Z11
Panasonic	<p>Panasonic :</p> <ol style="list-style-type: none"> 1. KX-1121
Brother	<p>Brother:</p> <ol style="list-style-type: none"> 1. HL-5250DN Laser
Samsung	<p>Samsung:</p> <ol style="list-style-type: none"> 1.ML-2250