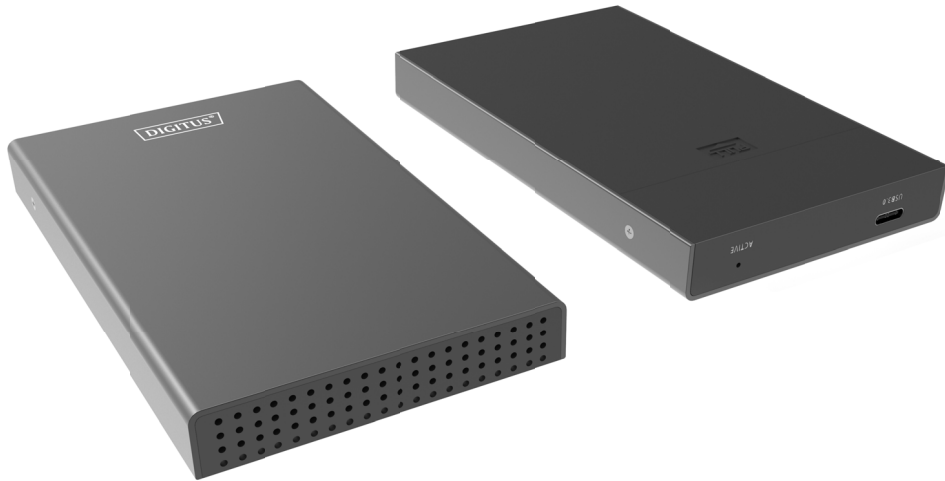




## USB 3.1 Type C to SATA6G 2.5" Enclosure



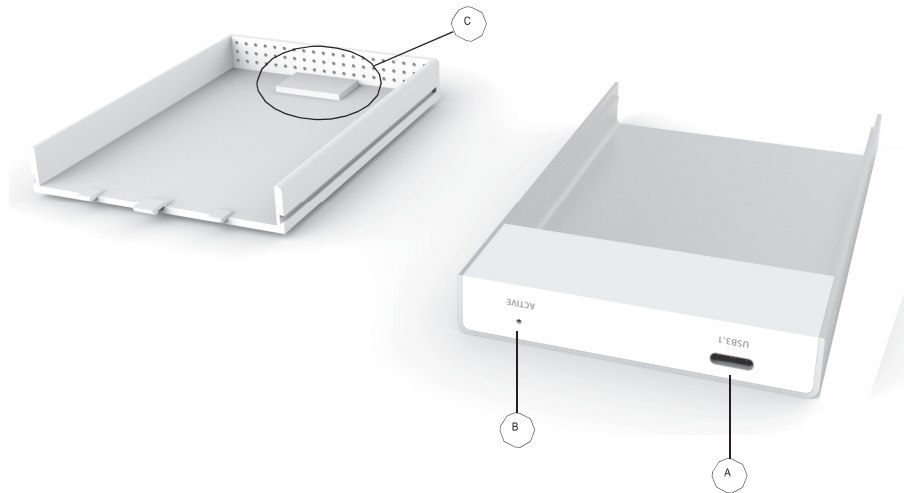
### User Manual DA-71113

#### Introduction

USB 3.1 Gen2 to 2.5" SATA6G HDD Enclosure takes advantage of UASP acceleration to quickly transfer or backup your data up to 10Gbps! Compact and lightweight makes it convenient to carry, it offers 360 protection to your hard drive in a super-slim package. An additional USB 3.1 cable is a good choice for you to assemble or operate your HDD or SSD.

#### Features

- Automatic sleep function: Features automatic sleep and spin-down, goes into sleep mode automatically after 30 minutes in idle state. LED flashes each three seconds to indicate standby, a single access to the drive restores the operational mode. Sustainable power management and environmental protection ensured.
- Features aluminum case, contemporary and reliable design; Theoretical USB 3.1 speeds of up to 10 Gbps, downward compatibility with USB 3.0/2.0/1.1.
- Suitable for 9.5mm and below thickness 2.5-Inch SATA HDD; Converts any 9.5mm & 7mm 2.5-Inch SATA HDD/SSD into an external hard drive for ultimate mobility and convenience.
- Tool free, No Reboot and Additional Driver is needed, easy to install and disassemble; Built-in foam pad, protect hard disk effectively.
- Compatible with all Windows versions and Mac OS; eye-pleasing HDD LED activity indicator; Support hot-swap, Plug & play.



- A. USB 3.1 Type C Connector
- B. Active LED Indicator
- C. Shockproof Sponge Mat

## Specifications

- 1 Downstream (SATA6G)
- 1 Upstream (USB 3.1 Type C/F)
- USB 3.1 Connectors: Input USB 3.0 Type C
- Support Windows XP/7/8/8.1/10 (32/64-bit) or Mac OS 10.x or higher

## Package Contents

- 1 x USB 3.1 Gen2 to 2.5" SATA6G HDD Enclosure
- 1 x USB 3.1 Gen2 Type C to A Male cable
- 1 x User Manual

## FAQ

- Q1. Why the real write and read speed cannot reach up to the standard USB 3.1 speed?  
A: Please kindly check that the product has been connected to the USB 3.1 host. If no, the device can only show the performance of USB 3.0/2.0/1.1 during usage. The maximum SATA connector's bandwidth is 6G which is well below the USB 3.1 speed (10Gbps). That would directly affects the performance of the docking station.
- Q2. Why over 2TB hard disk couldn't be identified by my Windows XP PC?  
A: The maximum capacity of hard disk which Windows XP can identify is 2TB and couldn't be identified by system if over 2TB. Please kindly upgrade the operating system to Vista (64 bit) or upper version and we suggest change hard disk into a GPT disk partition, otherwise the operating system will not support over 2 TB disk partitions.

Q3. Why new hard disk cannot be recognized by my computer?

A: Before using your new hard disk normally, you have to initialize the partition and format it in the disk management.

Q4. How to protect my hard disk from damage when I am planning to remove my hard disk from computer?

A: To safely remove your hard disk from your PC, please kindly operates your computer with the following steps: click the USB peripherals icon in the bottom-right corner of the screen firstly, and then selects the hard disk's icon to remove your hard disk.

Hereby ASSMANN Electronic GmbH, declares that this device is in compliance with the requirements of Directive 2014/30/EU and the Directive 2011/65/EU for RoHS compliance. The complete declaration of conformity can be requested by post under the below mentioned manufacturer address.

**Warning:**

This device is a class B product. This equipment may cause some radio interference in living environment. In this case, the user can be requested to undertake appropriate measures to prevent interference.

**[www.assmann.com](http://www.assmann.com)**

Assmann Electronic GmbH

Auf dem Schüffel 3

58513 Lüdenscheid

Germany

