



## **USB - HDMI GRAPHICS ADAPTER**



## **USER MANUAL**

## 1. Product introduction

USB2.0 TO HDMI Adapter can convert USB2.0 interface to HDMI interface, and allows you to add extra display (up to 6 displays for PC or 4 for Mac ) through your USB2.0 Port. Extend your desktop across 2 or more (limited 6) displays allowing you to increase your window frame like never before or Expand spread sheets across 2 or more (limited 6 ) display, in graphics programs increase your working area by putting al your pallets on the second display.

Mirror model can make all the assistant displays show the same window frame as main display synchronously.

### 1. Features

- Compliant with USB2.0 and down compatible with USB1.1
- HDMI output interface
- Easy to install
- Models supported:1.Main display 2.Extend 3.Mirror
- Easy to face multi-window duty, never need to switch windows.
- No extra power needed
- Plug and play
- Support WIN2000 SP and above
- Resolution

supported:640×480,720×480,768×576,800×600,1024×768,1280×720,1280×1024,1360×768,1366×768,1440×900,1600×1200,1680×1050

- Color Bit: Middle 16bit /Highest 32bit
- Rotation: Left rotation, Right rotation, and Reverse rotation.

### 2. System Requirement

The basic requirement of hardware

CPU must have 1.2GHz time frequency

At least 256CMB memory, recommend 512MB

USB2.0 Version

30MB useful disk capacity

CD-ROM or DVD Drive

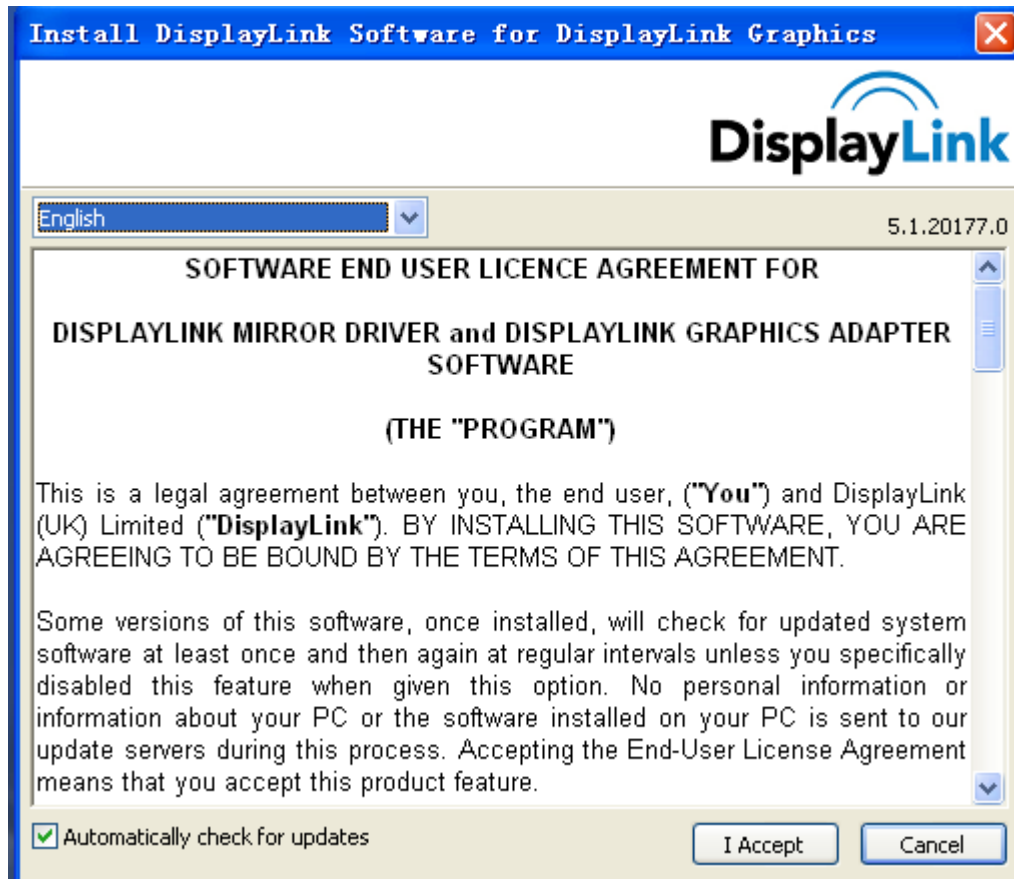
### 3. Installation(WIN2K/XP)

Please follow up the below steps to install USB2.0 TO HDMI driver.

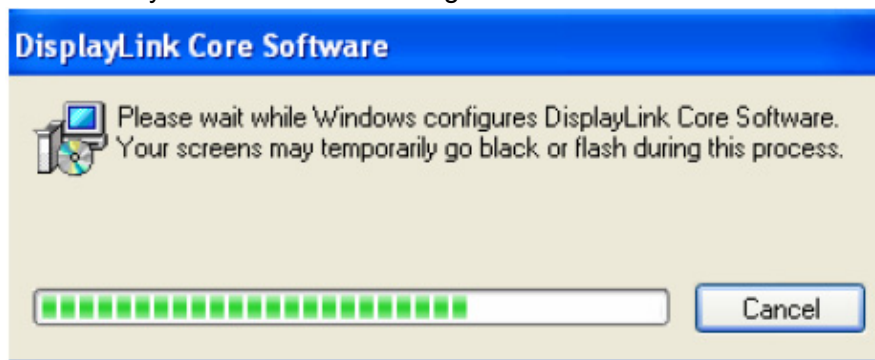
1. Tum on your computer and make sure the USB port are available
2. Please don't connect the product of USB TO HDMI to your computer before you install the driver.
3. Please double click“DisplayLink-5.exe” to start installation.



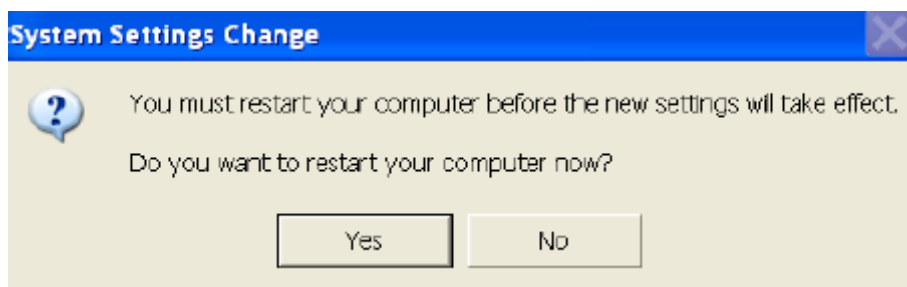
4. Select the same language as the system, and click “I Accept” to continue installation, refer to the below frame:



5. It will show you the below hint during installation.



6. It will remind you with the below frame after installation, just click "Yes" to restart your computer, and finish installation.



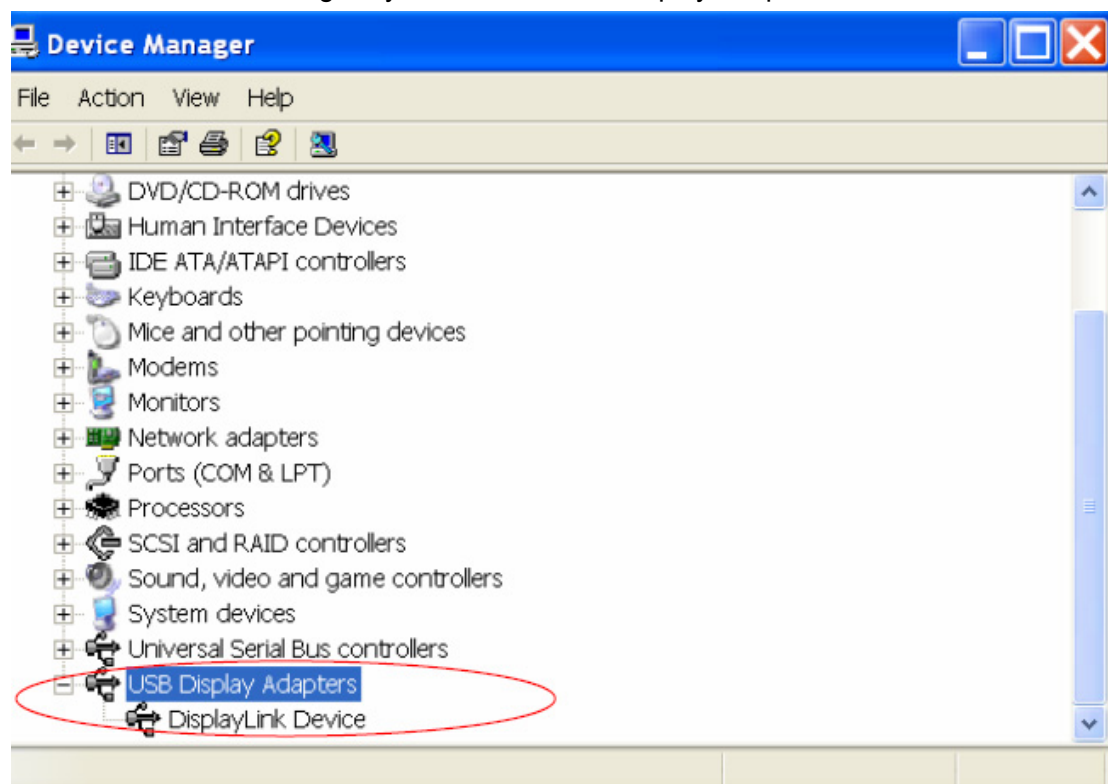
7. After installation, please connect the product of USB2.0 TO HDMI to the USB Port, system will detect it, please refer to the below frame:.



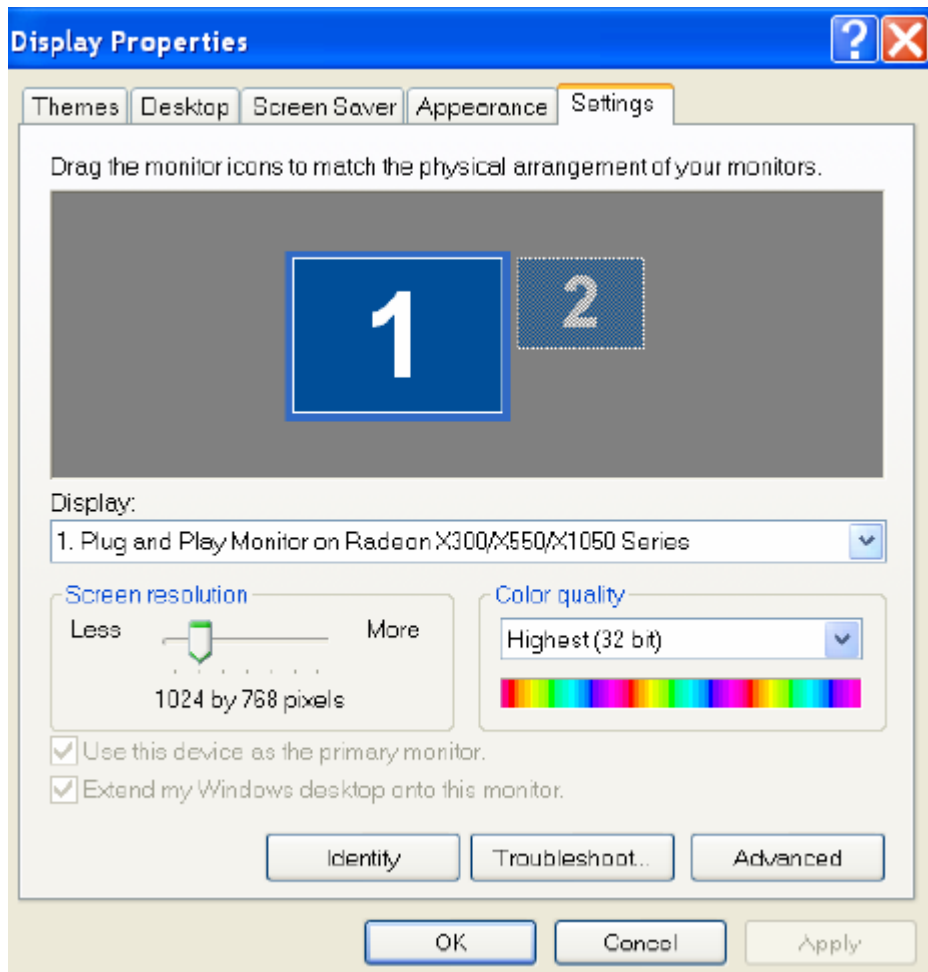
8. If it shows the below interface, it means the installation is succeeded.



9. Check "Device Manager", you can find "USB Display Adapters"

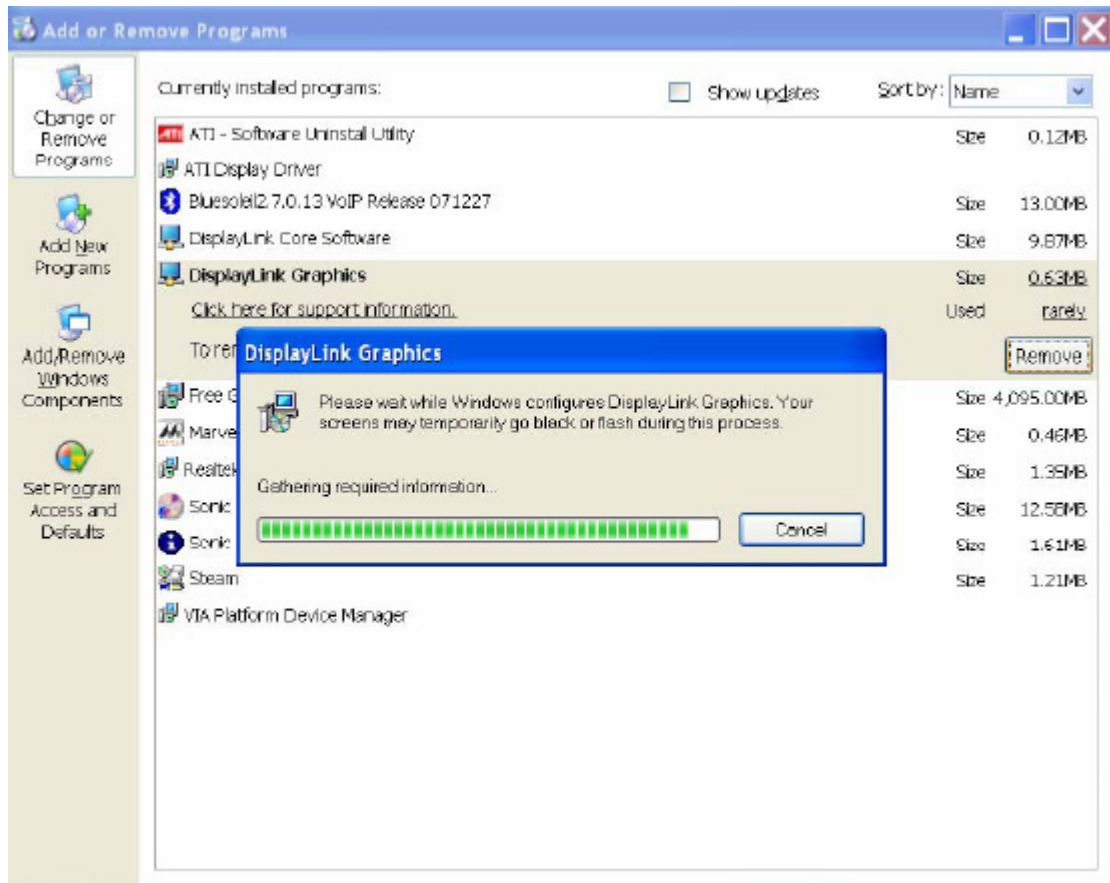


10. You can see the below frame and matching status at "System desktop "-----" Display Properties "-----" Setting.



#### 4. ove the Driver Program

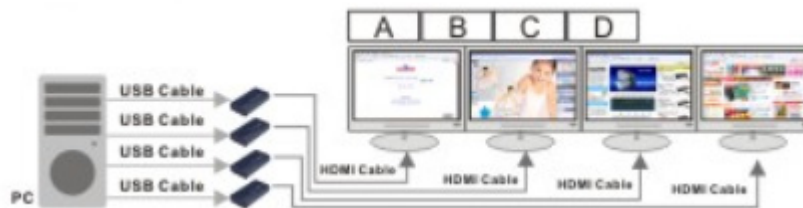
1. Go to the "Add or Remove program" from "Control pane" to find the Display-Link-Graphics program, refer to the below frame:



2. Just select and click “Remove” to remove the driver program.


## 6. User tips

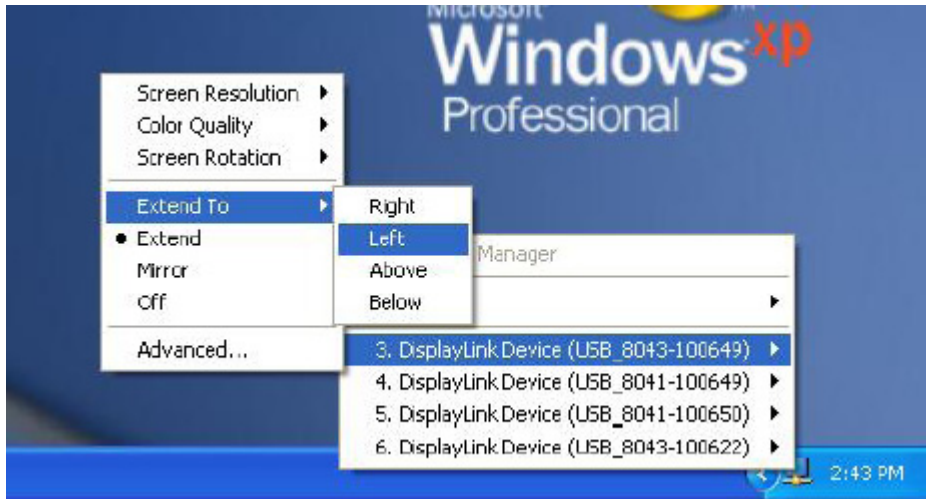
### USB2.0 TO HDMI Application image



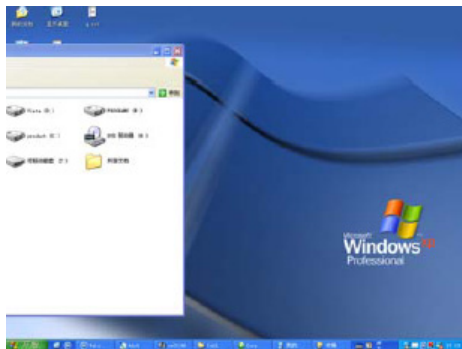
## 6.1 Extend

### 6.1.1 Extend (Left)

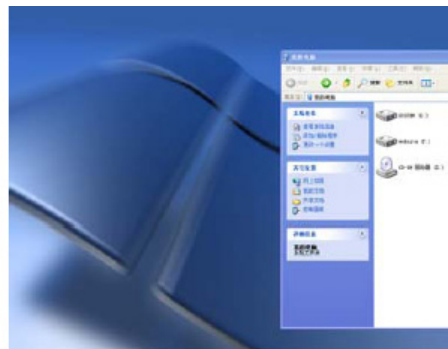
Click the icon “” on the right down corner of the main display desktop, it will pop-up the menu as below, just select: 2. Display-Link Device (USB-8041-100649) --- Extend to – Left



Frame will be extended to assistant display (3) from the left of main display



Main display

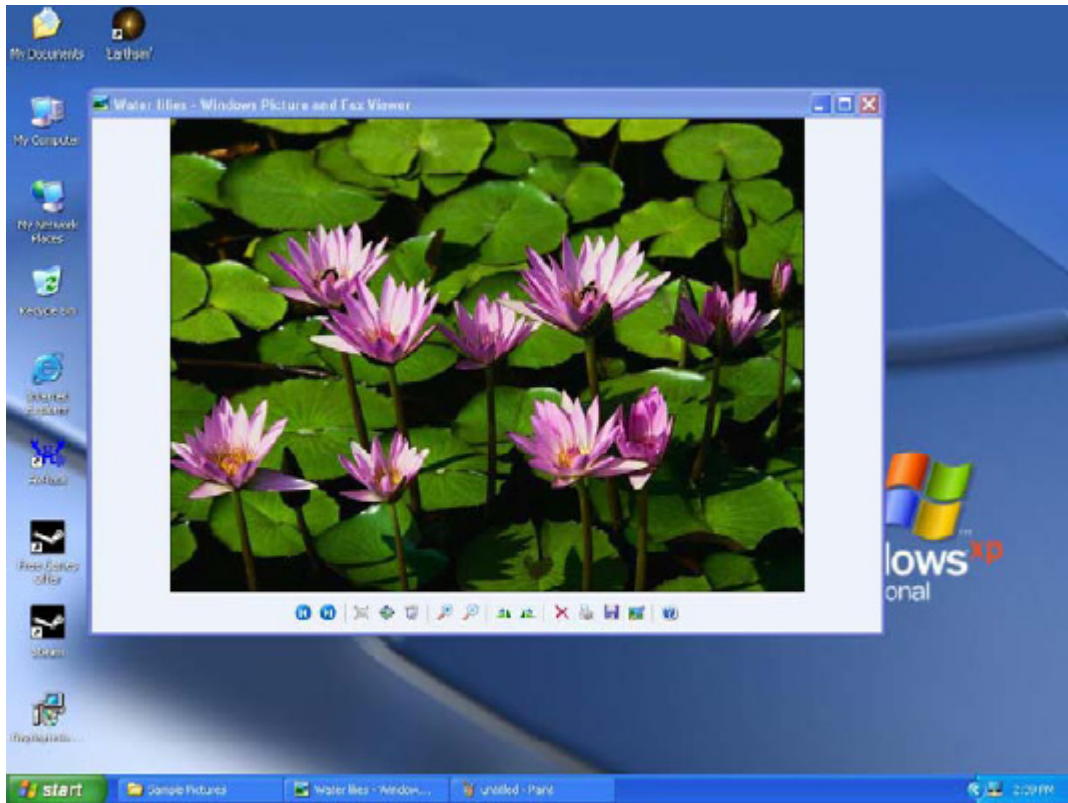


assistant display(3)

### 6.1.2 Extend 1 window across 6 displays

Click any one of the numbered display, go to "senior(A)", it will pop-up the below showing as below, adjust the resolution of every assistant display to the same left and click "Confirm"






(2) After you adjust the position of the icon of “Assistant display”, pull the current window rightward to the other assistant displays. Please refer to the below frame:



- Main display
- Assistant display 2
- Assistant display 3
- Assistant display 4
- Assistant display 5
- Assistant display 6
- Assistant display 7

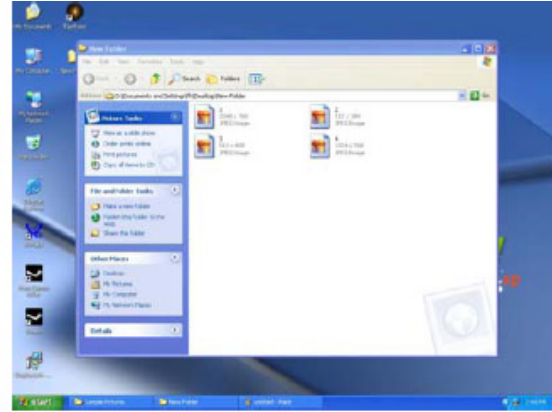


## 6.2 Mirror

Click the icon “” on the right down corner of the main display desktop, it will pop-up the window frame as below, just select 2-Mirror, then the window frame on the main display will be shown on the Assistant display synchronously.



Main Display



Assistant Display (2)